

**The Nyack College**

***Fact Book***

**Fall 2000**

**Nyack College  
One South Boulevard  
Nyack, NY 10960-3698**



# TABLE OF CONTENTS

	<i>Page</i>
<b>I. STUDENTS</b>	
A. Enrollment Summary .....	5
B. Ten-Year Enrollment History: Headcount .....	7
<i>Chart: Ten-Year Enrollment History: Headcount</i> .....	7
C. Ten-Year Enrollment History: FTE (Full-time Equivalent).....	8
<i>Chart: Ten-Year Enrollment History: FTE</i> .....	8
D. Enrollment by Race .....	9
<i>Chart: Historical Summary of Enrollment by Race</i> .....	9
E. Enrollment by Gender .....	10
<i>Chart: Historical Summary of Enrollment by Gender</i> .....	10
F. Enrollment by Country of Citizenship .....	11
G. Enrollment by State of Residence .....	12
H. Enrollment by New York County .....	13
I. Enrollment by Age .....	14
J. Enrollment by Denominational Affiliation .....	15
<i>Chart: History of C&amp;MA Enrollment, Nyack Campus</i> .....	16
K. Academic Profile of Incoming Class - NCRC	
Admissions Information .....	17
Average SAT Scores .....	17
Conditionally Admitted Students .....	17
Higher Education Opportunity Program (HEOP) Information .....	17
Nyack's Introduction to Academic (NIA) Program Information .....	17
L. Retention Study .....	19-20
M. Summary of the Vocational and Educational Preference Survey .....	21
<i>Chart: NCRC Students Intending Ministry Vocations</i> .....	22
<b>II. ACADEMICS</b>	
A. Enrollment by Major .....	23
B. Enrollment: Major by Class	
NCRC .....	25
NCMC .....	26
C. Degrees Conferred by Major .....	27
<b>III. PERSONNEL</b>	
A. Faculty Summary .....	29
<i>Charts: Faculty Summary Data</i> .....	30
B. Staff Summary .....	31
<b>IV. FACILITIES</b> .....	33
<b>V. FINANCES</b>	
A. Financial History .....	35
B. Tuition and Fees Schedule .....	36

Prepared by K. Widbin, Director of Institutional Research  
October 2000



## Enrollment Summary

### All Undergraduate Programs

Fall Term 2000-01	NCRC		NMC		Total Traditional		ADCP		Total	
	#	%	#	%	#	%	#	%	#	%
<b>Enrollment Status</b>										
First-time Freshmen (FTF)	240	26.3	160	30.7	400	27.9			400	23.0
Transfers	67	7.3	112	21.5	179	12.5	156	50.5	335	19.2
Stop-outs	22	2.4	14	2.7	36	2.5			36	2.1
Returning	565	62.0	234	44.9	799	55.8	153	49.5	952	54.6
Non-Matriculated	18	2.0	1	.2	19	1.3			19	1.1
<b>Total</b>	<b>912</b>	<b>100.0</b>	<b>521</b>	<b>100.0</b>	<b>1433</b>	<b>100.0</b>	<b>309</b>	<b>100.0</b>	<b>1742</b>	<b>100.0</b>
<b>Enrollment Type</b>										
Full-time	871	95.5	459	88.1	1330	92.8	309	100.0	1639	94.1
Part-time	41	4.5	62	11.9	103	7.2			103	5.9
<b>Total</b>	<b>912</b>	<b>100.0</b>	<b>521</b>	<b>100.0</b>	<b>1433</b>	<b>100.0</b>	<b>309</b>	<b>100.0</b>	<b>1742</b>	<b>100.0</b>
<b>Full-time Equivalent (FTE)</b>										
FTE of Full-time Students	871.00	98.1	459.00	93.1	1330.00	96.3	309.00	100.0	1639.00	97.0
FTE of Part-time Students	17.25	1.9	34.05	6.9	51.30	3.7			51.30	3.0
<b>Total FTE</b>	<b>888.25</b>	<b>100.0</b>	<b>493.05</b>	<b>100.0</b>	<b>1381.30</b>	<b>100.0</b>	<b>309.00</b>	<b>100.0</b>	<b>1690.30</b>	<b>100.0</b>
<b>Class Level</b>										
Freshman	371	40.7	371	71.2	742	51.8			742	42.6
Sophomore	239	26.2	69	13.2	308	21.5			308	17.7
Junior	181	19.8	55	10.6	236	16.5			236	13.5
Senior	103	11.3	25	4.8	128	8.9	309	100.0	437	25.1
Teacher Certification	3	.3			3	.2			3	.2
Non-Matriculated	15	1.6	1	.2	16	1.1			16	.9
<b>Total</b>	<b>912</b>	<b>100.0</b>	<b>521</b>	<b>100.0</b>	<b>1433</b>	<b>100.0</b>	<b>309</b>	<b>100.0</b>	<b>1742</b>	<b>100.0</b>
<b>Residency</b>										
On-campus Resident	708	77.6			708	49.4			708	40.6
Commuter	204	22.4	521	100.0	725	50.6	309	100.0	1034	59.4
<b>Total</b>	<b>912</b>	<b>100.0</b>	<b>521</b>	<b>100.0</b>	<b>1433</b>	<b>100.0</b>	<b>309</b>	<b>100.0</b>	<b>1742</b>	<b>100.0</b>

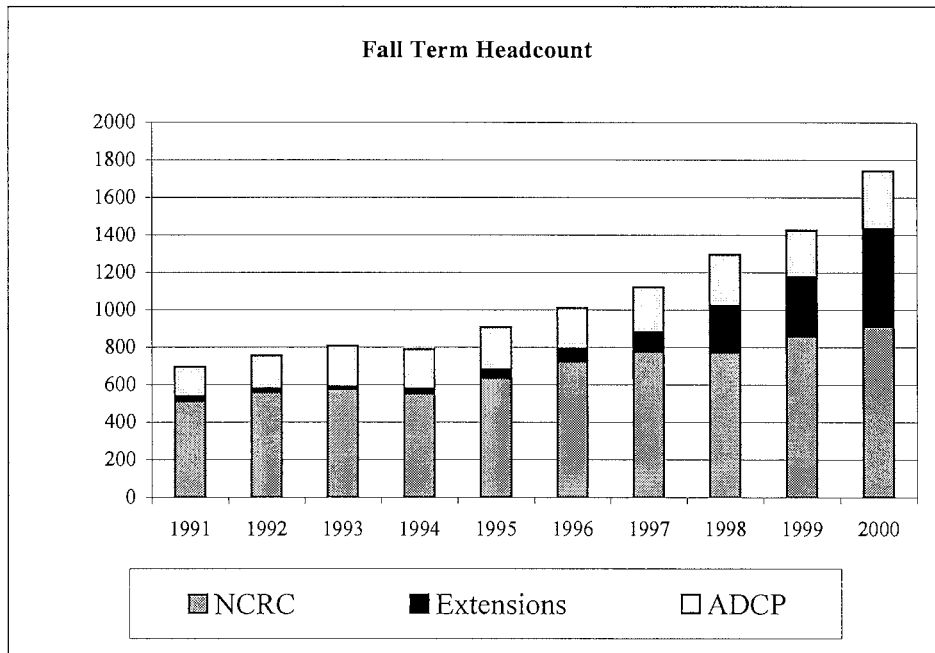
Source: Registrar



# Ten-Year Enrollment History: Headcount

## All Undergraduate Programs

Fall Term:	NCRC	Extensions	Total Traditional	ADCP	Total
1991	513	26	539	156	695
1992	560	19	579	177	756
1993	577	13	590	218	808
1994	554	24	578	212	790
1995	638	42	680	227	907
1996	727	66	793	217	1,010
1997	778	102	880	241	1,121
1998	775	247	1022	273	1,295
1999	859	317	1176	250	1,426
2000	912	521	1433	309	1,742



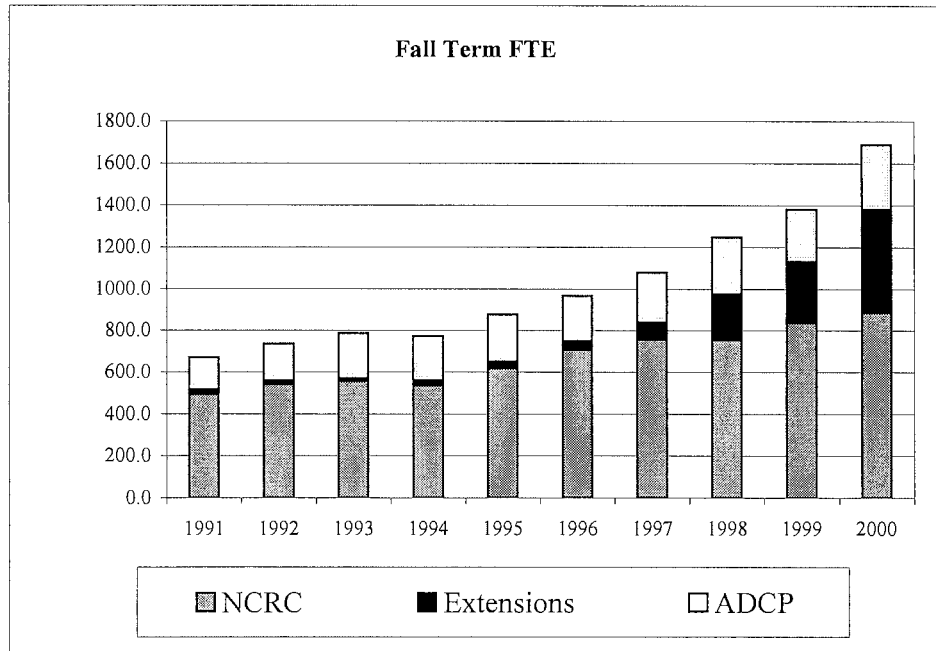
*\*Fall Term enrollment for the Adult Degree Completion Program is based on the number of students who registered for either 1st or 2nd semester between February 1 and July 31.*

Source: Registrar's Office

## Ten-Year Enrollment History: FTE

### All Undergraduate Programs

Fall Term:	NCRC	Extensions	Total Traditional	ADCP	Total
1991	494.4	20.7	515.1	156.0	671.1
1992	542.5	16.0	558.5	177.0	735.5
1993	558.1	11.2	569.3	218.0	787.3
1994	537.9	22.8	560.7	212.0	772.7
1995	619.1	31.7	650.8	227.0	877.8
1996	706.8	43.4	750.2	217.0	967.2
1997	758.2	80.4	838.6	241.0	1079.6
1998	755.6	220.0	975.6	273.0	1248.6
1999	838.4	293.1	1131.5	250.0	1381.5
2000	888.3	493.1	1381.3	309.0	1690.3



*\*Fall Term enrollment for the Adult Degree Completion Program is based on the number of students who registered for either 1st or 2nd semester between February 1 and July 31.*

Source: Registrar's Office

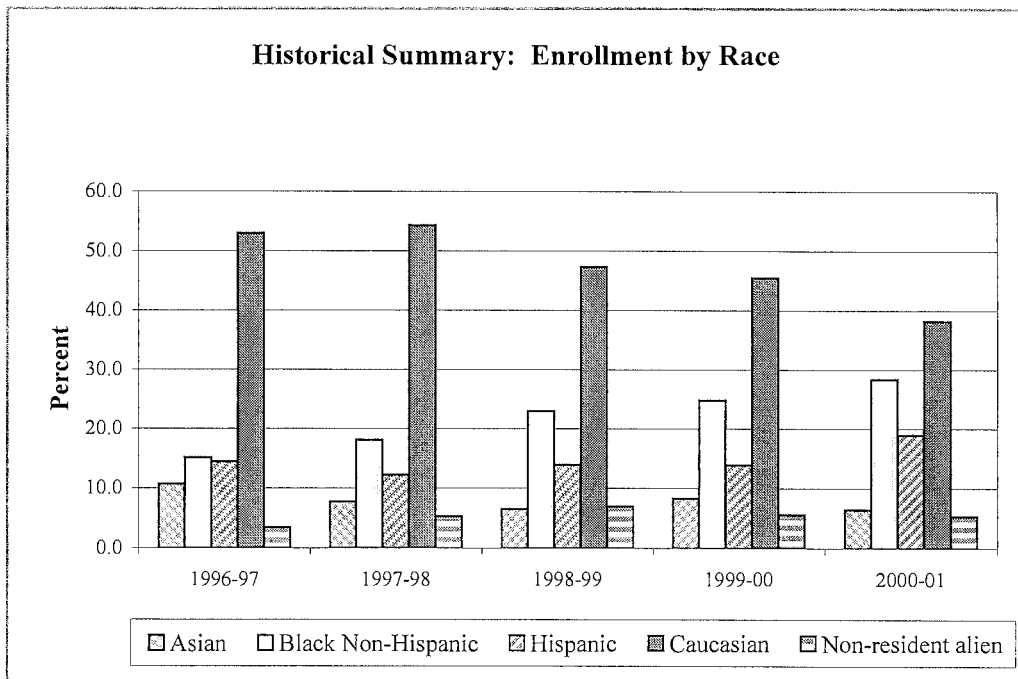


# Enrollment by Race

## All Undergraduate Programs

Fall Term 2000-01	NCRC		NMC		Total Traditional		ADCP		Total	
	#	%	#	%	#	%	#	%	#	%
Asian	68	7.5	35	6.7	103	7.2	9	2.9	112	6.4
Black Non-Hispanic	128	14.0	221	42.4	349	24.4	146	47.2	495	28.4
Hispanic	100	11.0	191	36.7	291	20.3	40	12.9	331	19.0
Native American	1	.1	2	.4	3	.2	1	.3	4	.2
Multi-racial	20	2.2	1	.2	21	1.5			21	1.2
Caucasian	554	60.7	21	4.0	575	40.1	90	29.1	665	38.2
Non-resident alien	41	4.5	50	9.6			2	.6	93	5.3
Unknown							21	6.8	21	1.2
<b>TOTAL</b>	<b>912</b>	<b>100.0</b>	<b>521</b>	<b>100.0</b>	<b>1433</b>	<b>100.0</b>	<b>309</b>	<b>100.0</b>	<b>1742</b>	<b>100.0</b>

Source: Registrar's Office

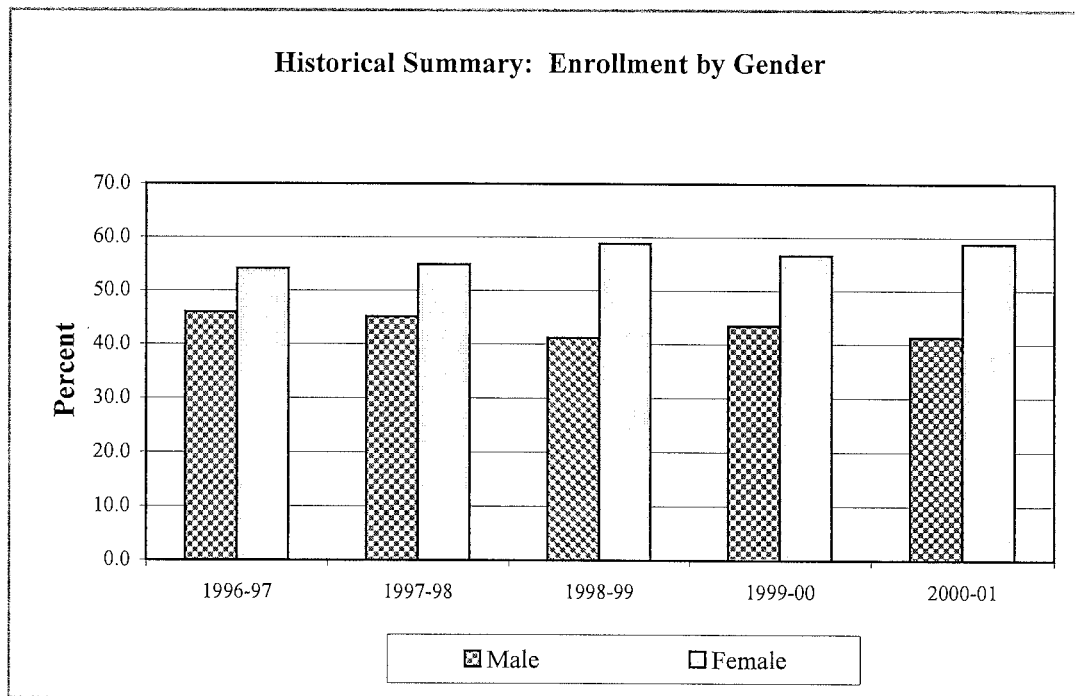


# Enrollment by Gender

## All Undergraduate Programs

Fall Term 2000-01	NCRC		NMC		Total Traditional		ADCP		Total	
	#	%	#	%	#	%	#	%	#	%
Male	374	41.0	206	39.5	580	40.5	139	45.0	719	41.3
Female	538	59.0	315	60.5	853	59.5	170	55.0	1023	58.7
<b>TOTAL</b>	<b>912</b>	<b>100.0</b>	<b>521</b>	<b>100.0</b>	<b>1433</b>	<b>100.0</b>	<b>309</b>	<b>100.0</b>	<b>1742</b>	<b>100.0</b>

Source: Registrar



## Enrollment by Country of Citizenship All Undergraduate Programs

Fall Term 2000-01	NCRC		NMC		Total Traditional		ADCP		Total	
	#	%	#	%	#	%	#	%	#	%
Bahamas			1	.2	1	.1			1	.1
Barbados	2	.2	1	.2	3	.2	2	.6	5	.3
Belize	1	.1	1	.2	2	.1			2	.1
Brazil	1	.1			1	.1			1	.1
Cambodia	1	.1	1	.2	2	.1			2	.1
Canada	4	.4	2	.4	6	.4			6	.3
Chile			1	.2	1	.1			1	.1
Colombia	2	.2	5	1.0	7	.5			7	.4
Costa Rica	1	.1			1	.1			1	.1
Dominican Republic	4	.4	26	5.0	30	2.1			30	1.7
Ecuador	7	.8	4	.8	11	.8			11	.6
El Salvador			4	.8	4	.3			4	.2
Ethiopia	1	.1	1	.2	2	.1	1	.3	3	.2
Germany	1	.1			1	.1			1	.1
Ghana			2	.4	2	.1			2	.1
Guatemala			1	.2	1	.1			1	.1
Guyana	2	.2	8	1.5	10	.7			10	.6
Haiti	8	.9	10	1.9	18	1.3	1	.3	19	1.1
Holland	1	.1			1	.1			1	.1
Honduras			2	.4	2	.1			2	.1
Hong Kong	2	.2			2	.1	1	.3	3	.2
India			2	.4	2	.1	1	.3	3	.2
Indonesia			1	.2	1	.1			1	.1
Ireland	1	.1			1	.1			1	.1
Jamaica	4	.4	13	2.5	17	1.2	5	1.6	22	1.3
Japan	2	.2			2	.1			2	.1
Kenya	1	.1			1	.1	1	.3	2	.1
Korea	29	3.2	45	8.6	74	5.2	2	.6	76	4.4
Liberia	1	.1			1	.1			1	.1
Malawi			1	.2	1	.1			1	.1
Mexico	1	.1	1	.2	2	.1			2	.1
Mozambique	1	.1			1	.1			1	.1
Nigeria	1	.1	2	.4	3	.2	1	.3	4	.2
Panama			1	.2	1	.1			1	.1
Peru			2	.4	2	.1			2	.1
Philippines	1	.1	1	.2	2	.1			2	.1
Poland			1	.2	1	.1			1	.1
Russia	2	.2	3	.6	5	.3			5	.3
Syria	1	.1			1	.1			1	.1
Taiwan	2	.2			2	.1			2	.1
Thailand	1	.1	1	.2	2	.1			2	.1
Trinidad	4	.4	8	1.5	12	.8	1	.3	13	.7
United Kingdom			1	.2	1	.1	2	.6	3	.2
United States	820	89.9	364	69.9	1,184	82.6	289	93.5	1,473	84.6
Venezuela			1	.2	1	.1	1	.3	2	.1
West Indies	1	.1	3	.6	4	.3			4	.2
Zimbabwe	1	.1			1	.1			1	.1
Unknown							1	.3	1	.1
<b>TOTAL</b>	<b>912</b>	<b>100.0</b>	<b>521</b>	<b>100.0</b>	<b>1,433</b>	<b>100.0</b>	<b>309</b>	<b>100.0</b>	<b>1,742</b>	<b>100.0</b>

On Visa (Non-Resident Aliens)	41	4.5	50	9.6	91	6.4	2	.6	93	5.3
Resident Aliens	51	5.6	107	20.5	158	11.0	18	5.8	176	10.1
U.S. Citizens	820	89.9	364	69.9	1,184	82.6	289	93.5	1,473	84.6
<b>TOTAL</b>	<b>912</b>	<b>100.0</b>	<b>521</b>	<b>100.0</b>	<b>1,433</b>	<b>100.0</b>	<b>309</b>	<b>100.0</b>	<b>1,742</b>	<b>100.0</b>

Source: Registrar's Office

## Enrollment by State of Residence

### All Undergraduate Programs

Fall Term 2000-01	NCRC		NCMC		Total Traditional		ADCP		Total Undergrad	
	#	%	#	%	#	%	#	%	#	%
<b>NEW YORK</b>	<b>426</b>	<b>46.7</b>	<b>435</b>	<b>83.5</b>	<b>861</b>	<b>60.1</b>	<b>263</b>	<b>85.1</b>	<b>1124</b>	<b>64.5</b>
<b>OTHER MID-ATLANTIC</b>	<b>203</b>	<b>22.3</b>	<b>34</b>	<b>6.5</b>	<b>237</b>	<b>16.5</b>	<b>37</b>	<b>12.0</b>	<b>274</b>	<b>15.7</b>
Delaware	3	0.3			3	0.2			3	0.2
Maryland	22	2.4			22	1.5			22	1.3
New Jersey	108	11.8	33	6.3	141	9.8	37	12.0	178	10.2
Pennsylvania	69	7.6	1	0.2	70	4.9			70	4.0
Washington, D.C.	1	0.1			1	0.1			1	0.1
<b>NEW ENGLAND</b>	<b>86</b>	<b>9.4</b>	<b>2</b>	<b>0.4</b>	<b>88</b>	<b>6.1</b>	<b>7</b>	<b>2.3</b>	<b>95</b>	<b>5.5</b>
Connecticut	25	2.7	2	0.4	27	1.9	7	2.3	34	2.0
Maine	14	1.5			14	1.0			14	0.8
Massachusetts	25	2.7			25	1.7			25	1.4
Rhode Island	3	0.3			3	0.2			3	0.2
New Hampshire	13	1.4			13	0.9			13	0.7
Vermont	6	0.7			6	0.4			6	0.3
<b>MID-WEST</b>	<b>74</b>	<b>8.1</b>			<b>74</b>	<b>5.2</b>			<b>74</b>	<b>4.2</b>
Illinois	9	1.0			9	0.6			9	0.5
Indiana	3	0.3			3	0.2			3	0.2
Iowa	1	0.1			1	0.1			1	0.1
Michigan	4	0.4			4	0.3			4	0.2
Minnesota	12	1.3			12	0.8			12	0.7
Missouri	1	0.1			1	0.1			1	0.1
Nebraska	1	0.1			1	0.1			1	0.1
North Dakota	1	0.1			1	0.1			1	0.1
Ohio	40	4.4			40	2.8			40	2.3
South Dakota	1	0.1			1	0.1			1	0.1
Wisconsin	1	0.1			1	0.1			1	0.1
<b>SOUTHEAST</b>	<b>45</b>	<b>4.9</b>			<b>45</b>	<b>3.1</b>			<b>45</b>	<b>2.6</b>
Alabama	3	0.3			3	0.2			3	0.2
Florida	16	1.8			16	1.1			16	0.9
Georgia	3	0.3			3	0.2			3	0.2
Kentucky	3	0.3			3	0.2			3	0.2
North Carolina	2	0.2			2	0.1			2	0.1
South Carolina	1	0.1			1	0.1			1	0.1
Tennessee	1	0.1			1	0.1			1	0.1
Virginia	13	1.4			13	0.9			13	0.7
West Virginia	3	0.3			3	0.2			3	0.2
<b>WEST</b>	<b>30</b>	<b>3.3</b>			<b>30</b>	<b>2.1</b>			<b>30</b>	<b>1.7</b>
Alaska	1	0.1			1	0.1			1	0.1
Arizona	3	0.3			3	0.2			3	0.2
California	7	0.8			7	0.5			7	0.4
Colorado	6	0.7			6	0.4			6	0.3
Hawaii	1	0.1			1	0.1			1	0.1
Idaho	1	0.1			1	0.1			1	0.1
Montana	1	0.1			1	0.1			1	0.1
Oklahoma	1	0.1			1	0.1			1	0.1
Oregon	1	0.1			1	0.1			1	0.1
Texas	4	0.4			4	0.3			4	0.2
Washington	3	0.3			3	0.2			3	0.2
Wyoming	1	0.1			1	0.1			1	0.1
<b>OTHER</b>	<b>7</b>	<b>0.8</b>			<b>7</b>	<b>0.5</b>			<b>7</b>	<b>0.4</b>
Virgin Islands	1	0.1			1	0.1			1	0.1
U.S. Citizens living abroad (incl. MK's)	6	0.7			6	0.4			6	0.3
<i>Foreign students included above (resident aliens)</i>	<i>51</i>	<i>5.6</i>	<i>107</i>	<i>20.5</i>	<i>158</i>	<i>11.0</i>	<i>107</i>	<i>34.6</i>	<i>265</i>	<i>15.2</i>
<i>Foreign students not included above (non-resident aliens)</i>	<i>41</i>	<i>4.5</i>	<i>50</i>	<i>9.6</i>	<i>91</i>	<i>6.4</i>	<i>2</i>	<i>0.6</i>	<i>93</i>	<i>5.3</i>
<b>TOTAL ENROLLMENT</b>	<b>912</b>	<b>100.0</b>	<b>521</b>	<b>100.0</b>	<b>1433</b>	<b>100.0</b>	<b>309</b>	<b>100.0</b>	<b>1742</b>	<b>100.0</b>

<b>Recap:</b>										
New York State Residents (U.S. citizens & resident aliens)	426	46.7	435	83.5	861	60.1	263	85.1	1124	64.5
Out-of-State Residents	445	48.8	36	6.9	481	33.6	44	14.2	525	30.1
Foreign students (non-resident aliens)	41	4.5	50	9.6	91	6.4	2	0.6	93	5.3
<b>TOTAL ENROLLMENT</b>	<b>912</b>	<b>100.0</b>	<b>521</b>	<b>100.0</b>	<b>1433</b>	<b>100.0</b>	<b>309</b>	<b>100.0</b>	<b>1742</b>	<b>100.0</b>

Source: Registrar's Office

## Enrollment by New York County

### All Undergraduate Programs

*Percentages indicate each county's proportion of total New York State residents.  
Includes resident aliens and U.S. citizens; non-resident aliens excluded.*

Fall Term 2000-01	NCRC		NMC		Total Traditional		ADCP		Total	
	#	%	#	%	#	%	#	%	#	%
Albany	2	.5			2	.2			2	.2
Allegany	2	.5			2	.2			2	.2
Broome	1	.2	1	.2	2	.2			2	.2
Cayuga	2	.5			2	.2			2	.2
Chautauqua	1	.2			1	.1			1	.1
Chemung	1	.2			1	.1			1	.1
Chenango	5	1.2			5	.6			5	.4
Dutchess	11	2.6			11	1.3			11	1.0
Erie	8	1.9			8	.9			8	.7
Essex	1	.2			1	.1			1	.1
Franklin	1	.2			1	.1			1	.1
Greene	2	.5			2	.2			2	.2
Hamilton	1	.2			1	.1			1	.1
Herkimer	2	.5			2	.2			2	.2
Lewis	1	.2			1	.1			1	.1
Livingston	2	.5			2	.2			2	.2
Monroe	4	.9			4	.5			4	.4
Nassau	20	4.7	14	3.2	34	3.9	12	4.6	46	4.1
<i>New York City:</i>	<i>180</i>	<i>42.3</i>	<i>111</i>	<i>94.5</i>	<i>591</i>	<i>68.6</i>	<i>138</i>	<i>52.5</i>	<i>729</i>	<i>64.9</i>
New York (Manhattan)	17	4.0	66	15.2	83	9.6	18	6.8	101	9.0
Bronx	38	8.9	74	17.0	112	13.0	22	8.4	134	11.9
Kings (Brooklyn)	49	11.5	149	34.3	198	23.0	41	15.6	239	21.3
Queens	60	14.1	112	25.7	172	20.0	52	19.8	224	19.9
Richmond (Staten Island)	16	3.8	10	2.3	26	3.0	5	1.9	31	2.8
Niagara	3	.7			3	.3			3	.3
Oneida	5	1.2			5	.6			5	.4
Onondaga	6	1.4			6	.7			6	.5
Ontario	1	.2			1	.1			1	.1
Orange	18	4.2			18	2.1	10	3.8	28	2.5
Oswego	4	.9			4	.5			4	.4
Putnam	5	1.2			5	.6			5	.4
Rensselaer	5	1.2			5	.6			5	.4
Rockland	48	11.3			48	5.6	43	16.3	91	8.1
Saratoga	5	1.2			5	.6	9	3.4	14	1.2
Schenectady	4	.9			4	.5			4	.4
Schoharie	2	.5			2	.2			2	.2
Steuben	2	.5			2	.2			2	.2
Suffolk	29	6.8	2	.5	31	3.6	11	4.2	42	3.7
Sullivan	5	1.2			5	.6			5	.4
Tioga	1	.2			1	.1			1	.1
Tompkins	2	.5			2	.2			2	.2
Ulster	4	.9			4	.5			4	.4
Washington	1	.2			1	.1			1	.1
Wayne	1	.2			1	.1			1	.1
Westchester	27	6.3	7	1.6	34	3.9	38	14.4	72	6.4
Yates	1	.2			1	.1			1	.1
Undesignated							2	.8	2	.2
<b>Total New York State Residents</b>	<b>426</b>	<b>100.0</b>	<b>435</b>	<b>100.0</b>	<b>861</b>	<b>100.0</b>	<b>263</b>	<b>100.0</b>	<b>1124</b>	<b>100.0</b>

Source: Registrar's Office

## Enrollment by Age

### All Undergraduate Programs

#### I. All Registered Undergraduates

Fall Term 2000-01	NCRC		NCCMC		Total Traditional		ADCP		Total	
	#	%	#	%	#	%	#	%	#	%
Less than 25	846	92.8	187	35.9	1033	72.1	14	4.5	1047	60.1
25-29	32	3.5	77	14.8	109	7.6	49	15.9	158	9.1
30-39	21	2.3	129	24.8	150	10.5	132	42.7	282	16.2
40-49	9	1.0	81	15.5	90	6.3	86	27.8	176	10.1
50-59	4	.4	29	5.6	33	2.3	24	7.8	57	3.3
60 and over	0	.0	8	1.5	8	.6	3	1.0	11	.6
Unknown	0	.0	10	1.9	10	.7	1	.3	11	.6
<b>TOTAL</b>	<b>912</b>	<b>100.0</b>	<b>521</b>	<b>100.0</b>	<b>1433</b>	<b>100.0</b>	<b>309</b>	<b>100.0</b>	<b>1742</b>	<b>100.0</b>

Avg. Age	20	31	24	<i>n/a</i>	
Range	15-56	16-73	15-73	<i>n/a</i>	

#### II. First-time Freshmen (FTF)

Fall Term 2000-01	NCRC		NCCMC		Total Traditional		ADCP		Total	
	#	%	#	%	#	%	#	%	#	%
Less than 25	240	100.0	85	53.1	325	81.3			325	81.3
25-29		.0	14	8.8	14	3.5			14	3.5
30-39		.0	33	20.6	33	8.3			33	8.3
40-49		.0	12	7.5	12	3.0			12	3.0
50-59		.0	9	5.6	9	2.3			9	2.3
60 and over		.0	2	1.3	2	.5			2	.5
Unknown		.0	5	3.1	5	1.3			5	1.3
<b>TOTAL</b>	<b>240</b>	<b>100.0</b>	<b>160</b>	<b>100.0</b>	<b>400</b>	<b>100.0</b>			<b>400</b>	<b>100.0</b>

Avg. Age	18	27	21	<i>n/a</i>	
Range	17-22	16-61	16-61	<i>n/a</i>	

Source: Registrar

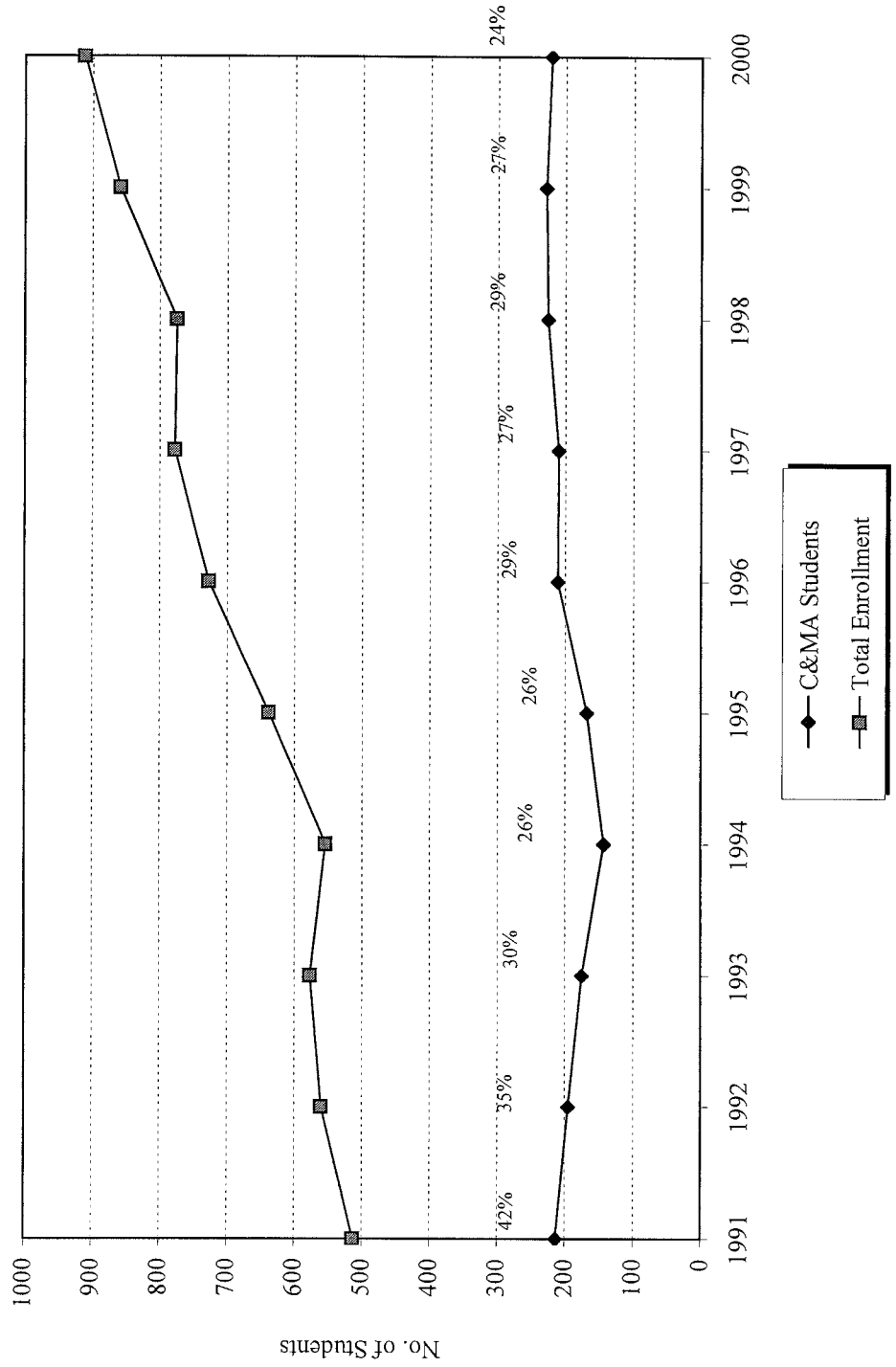
## Enrollment by Denominational Affiliation

### All Undergraduate Programs

Fall Term 2000-01	NCRC		NMC		Total Traditional		ADCP		Total	
	#	%	#	%	#	%	#	%	#	%
<b>Christian Denominations</b>										
Anglican	2	.2			2	.1			2	.1
Apostolic	1	.1	6	1.2	7	.5			7	.4
Assemblies of God	45	4.9	13	2.5	58	4.0	7	2.3	65	3.7
Baptist	136	14.9	45	8.6	181	12.6	48	15.5	229	13.1
Brethren	5	.5			5	.3			5	.3
C & M A	221	24.2	18	3.5	239	16.7	2	.6	241	13.8
Christian Reformed	1	.1			1	.1			1	.1
Church of Christ	4	.4	7	1.3	11	.8			11	.6
Church of God	7	.8	28	5.4	35	2.4			35	2.0
Congregational	4	.4			4	.3			4	.2
Disciples of Christ	1	.1	2	.4	3	.2			3	.2
Episcopal			2	.4	2	.1	5	1.6	7	.4
Evangelical	16	1.8	9	1.7	25	1.7			25	1.4
Evangelical Free	17	1.9			17	1.2	1	.3	18	1.0
Four Square	2	.2	1	.2						
Full Gospel	2	.2	1	.2	3	.2			3	.2
Holiness			2	.4	2	.1			2	.1
Independent	9	1.0	27	5.2	36	2.5			36	2.1
Inter-Denominational	7	.8	4	.8	11	.8			11	.6
Lutheran	4	.4	1	.2	5	.3	4	1.3	9	.5
Mennonite	2	.2			2	.1			2	.1
Messianic Jew	6	.7			6	.4			6	.3
Methodist	31	3.4	20	3.8	51	3.6	21	6.8	72	4.1
Moravian			1	.2						
Nazarene	1	.1	1	.2	2	.1			2	.1
Non-Denominational/Protestant	215	23.6	114	21.9	329	23.0	40	12.9	369	21.2
Orthodox	1	.1			1	.1			1	.1
Pentecostal	92	10.1	168	32.2	260	18.1	23	7.4	283	16.2
Presbyterian	38	4.2	41	7.9	79	5.5			79	4.5
Protestant	2	.2			2	.1			2	.1
Reformed Church	7	.8	1	.2	8	.6			8	.5
Roman Catholic	21	2.3	6	1.2	27	1.9	79	25.6	106	6.1
Salvation Army	2	.2			2	.1	7	2.3	9	.5
Seventh Day Adventist	4	.4	2	.4	6	.4	5	1.6	11	.6
United Missionary			1	.2	1				1	.1
Wesleyan	6	.7			6	.4			6	.3
Other							16	5.2		
<b>Other Religions</b>										
Eastern Religions							3	1.0	3	.2
Judaism							11	3.6	11	.6
Muslim							7	2.3	7	.4
<b>Undesignated</b>										
							30	9.7	30	1.7
<b>TOTAL</b>	<b>912</b>	<b>100.0</b>	<b>521</b>	<b>100.0</b>	<b>1433</b>	<b>100.0</b>	<b>309</b>	<b>100.0</b>	<b>1742</b>	<b>100.0</b>

Source: Registrar's Office

**C&MA ENROLLMENT  
NCRC**





# Academic Profile of Incoming Class

NCRC

	96-97	97-98	98-99	99-00	00-01
<b>Admissions</b>					
Applications	784	901	879	1030	998
Admissions	569	648	628	713	713
Enrollments (1st-time freshmen, transfers, and stop-outs)	313	307	282	369	318
<b>Average SAT* Scores, Combined Verbal &amp; Math - First-time Freshmen</b>					
Mean Avg., Recentered Scale	980	968	1020	962	978
Median, Recentered Scale	970	970	1030	970	975
Percent of Students Reporting Scores	91.5	90.8	86.4	92.1	93.3
<b>Conditionally Admitted Students</b>					
<b>Headcount</b>					
1st-time Freshmen	65	71	49	87	66
Transfers	<u>14</u>	<u>20</u>	<u>7</u>	<u>13</u>	<u>4</u>
Total	79	91	56	100	70
<b>Percent</b>					
1st-time Freshmen	31%	36%	25%	33%	28%
Transfers	17%	20%	10%	14%	6%
Total	27%	31%	21%	28%	23%
<b>Students in Higher Education Opportunity Program (HEOP)</b>					
New Students	13	16	13	18	16
Returning Students	<u>35</u>	<u>30</u>	<u>31</u>	<u>23</u>	<u>30</u>
Total	48	46	44	41	46
<b>Students in Nyack's Introduction to Academia (NIA) Program**</b>					
New Students				14	17
Returning Students				<u>0</u>	<u>5</u>
Total				14	22

\* Includes ACT scores converted to SAT equivalents

\*\* The NIA Program was implemented in 1999-00

Source: Offices of Admissions, Registrar



**Retention Study - First-time Freshmen (FTF)**  
**Full-time Degree-Seeking Students**

Year of First Enrollment (Fall Term)	Number in Original Cohort	Returned Second Year	Returned Third Year	Graduated within Four Years	Graduated within Five Years	Graduated within Six Years
<b>NCRC</b>						
1990	102	69.6%	51.0%	32.4%	46.1%	47.1%
1991	108	76.9%	50.0%	20.4%	34.3%	39.8%
1992	105	76.2%	56.2%	38.1%	45.7%	48.6%
1993	109	62.4%	46.8%	28.4%	40.4%	42.2%
1994	105	71.4%	60.0%	29.5%	46.7%	47.6%
1995	155	76.8%	57.4%	38.7%	47.1%	
1996	208	62.5%	50.5%	33.2%		
1997	193	62.7%	44.0%			
1998	196	67.9%	51.5%			
1999	267	71.2%				
<b>NCCMC</b>						
1990						
1991						
1992						
1993						
1994						
1995						
1996						
1997	14	78.6%	57.1%			
1998	61	52.5%	42.6%			
1999	55	47.3%				
<b>TOTAL TRADITIONAL PROGRAMS</b>						
1990						
1991						
1992						
1993						
1994						
1995						
1996						
1997	207	63.8%	44.9%			
1998	257	64.2%	49.4%			
1999	322	67.1%				

NOTE: Students earning both an Associate's and Bachelor's degree are included as graduates only in the year of their Bachelor's degree.

Source: Office of the Registrar

## Retention Study - Transfers

### Full-time Degree-Seeking Students

*NA = Data Not Available.*

Year of First Enrollment (Fall Term)	Number in Original Cohort	Returned Second Year	Graduated within One Year	Graduated within Two Years	Graduated within Three Years	Graduated within Four Years	Graduated within Five Years	Graduated within Six Years
<b>NCRC</b>								
1990	57	NA	8.8%	15.8%	26.3%	45.6%	47.4%	49.1%
1991	65	NA	0.0%	18.5%	33.8%	56.9%	61.5%	66.2%
1992	84	NA	1.2%	25.0%	40.5%	46.4%	51.2%	52.4%
1993	87	NA	0.0%	17.2%	33.3%	42.5%	43.7%	44.8%
1994	67	71.6%	0.0%	13.4%	34.3%	47.8%	49.3%	53.7%
1995	74	67.6%	2.7%	12.2%	35.1%	47.3%	56.8%	
1996	81	58.0%	2.5%	13.6%	25.9%	33.3%		
1997	97	63.9%	0.0%	9.3%	18.6%			
1998	62	69.4%	0.0%	12.9%				
1999	89	80.9%	2.2%					
<b>NCMC</b>								
1990								
1991								
1992								
1993								
1994								
1995								
1996								
1997	19	47.4%	0.0%	5.3%	15.8%			
1998	59	45.8%	1.7%	5.1%				
1999	50	60.0%	0.0%					
<b>TOTAL TRADITIONAL PROGRAMS</b>								
1990								
1991								
1992								
1993								
1994								
1995								
1996								
1997	116	61.2%	0.0%	8.6%	18.1%			
1998	121	57.9%	0.8%	9.1%				
1999	139	73.4%	1.4%					

*NOTE: Students earning both an Associate's and Bachelor's degree are included as graduates only in the year of their Bachelor's degree.*

Source: Office of the Registrar

**Summary of the  
Vocational and Educational Preference Survey  
Traditional Programs  
1999-00**

	NCRC		NCMC		Total	
	#	%	#	%	#	%
<b>CHURCH MINISTRY VOCATIONS</b>						
Missions (including teaching)	37	9.5	9	9.9	46	9.5
General Pastoral Ministry	24	6.1	20	22.0	44	9.1
Youth Ministry	38	9.7	4	4.4	42	8.7
Music/Worship Ministry	2	.5	3	3.3	5	1.0
Christian Education	4	1.0	5	5.5	9	1.9
Chaplaincy			3	3.3	3	.6
<b>Total</b>	<b>105</b>	<b>26.9</b>	<b>44</b>	<b>48.4</b>	<b>149</b>	<b>30.9</b>
<b>OTHER VOCATIONS</b>						
Psychology / Counseling	41	10.5	16	17.6	57	11.8
Business / Management	38	9.7	14	15.4	52	10.8
Computer Technology	4	1.0			4	.8
Social Work	14	3.6	2	2.2	16	3.3
Education: Elementary Level	49	12.5	6	6.6	55	11.4
Education: Secondary Level	15	3.8	2	2.2	17	3.5
Music Education	19	4.9			19	3.9
Education: ESL	10	2.6			10	2.1
Education: Post-secondary Level	10	2.6	2	2.2	12	2.5
Medicine	6	1.5			6	1.2
Writing (literary)	10	2.6			10	2.1
Performing Arts	16	4.1	1	1.1	17	3.5
Media: Radio, TV, Journalism	22	5.6			22	4.6
Law	7	1.8			7	1.5
Other / Undecided / No Response	25	6.4	4	4.4	29	6.0
<b>Total</b>	<b>286</b>	<b>73.1</b>	<b>47</b>	<b>51.6</b>	<b>333</b>	<b>69.1</b>
<b>GRAND TOTAL</b>	<b>391</b>	<b>100.0</b>	<b>91</b>	<b>100.0</b>	<b>482</b>	<b>100.0</b>
Number of Respondents	391		91		482	
Enrollment	859		317		1176	
Response Rate	45.5		28.7		41.0	

<b>Intending Graduate Study:</b>	<b>273</b>	<b>69.8</b>	<b>75</b>	<b>82.4</b>	<b>348</b>	<b>72.2</b>
<i>Ministerial Prep'n./Bible</i>	86	22.0	36	39.6	122	25.3
<i>Counseling/Psychology</i>	63	16.1	21	23.1	84	17.4
<i>Education Programs</i>	13	3.3			13	2.7

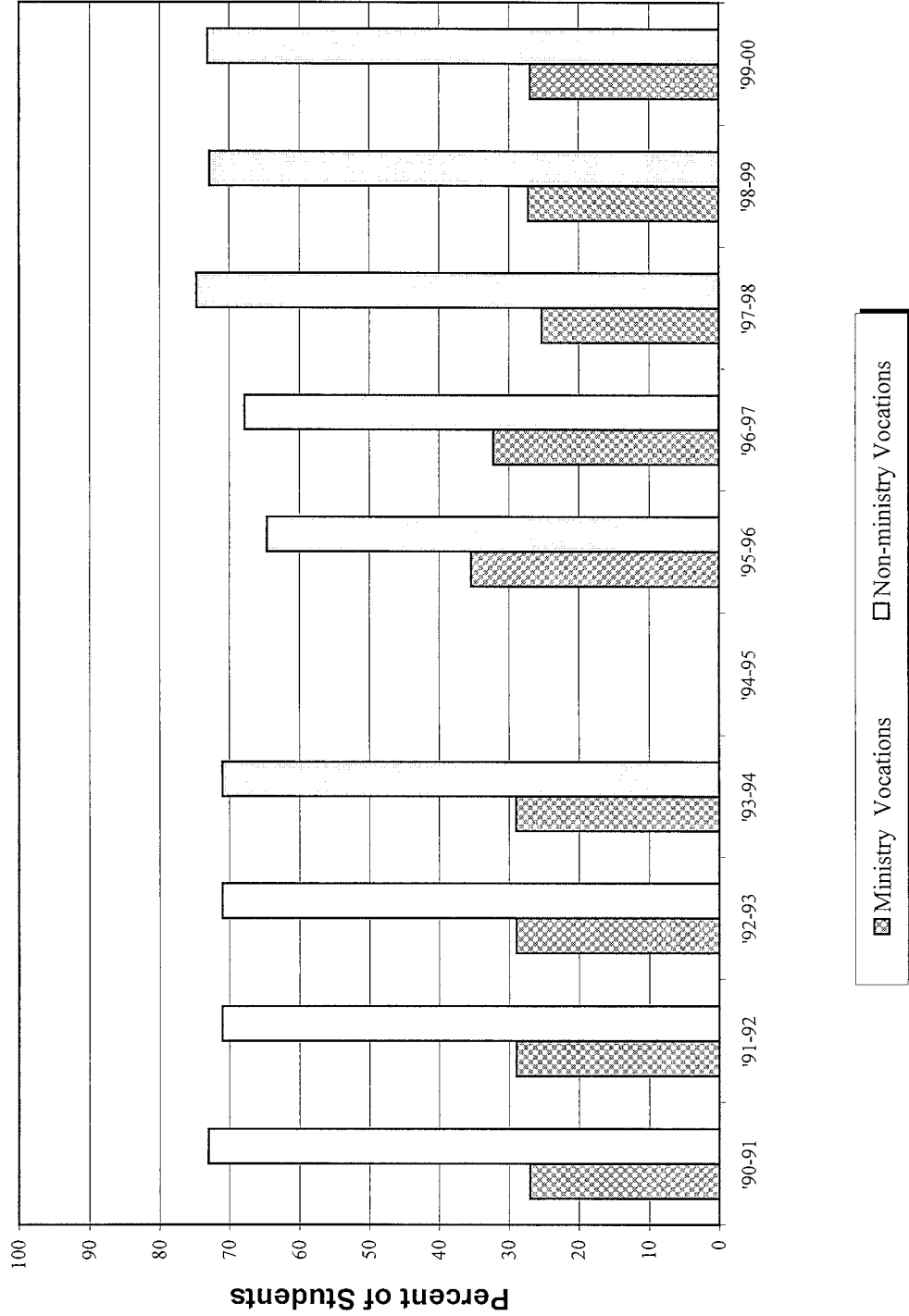
**NOTES:**

- a) In 1997-98 and thereafter, the survey was administered at the end of the fall term during spring term pre-registration. In prior years, the survey was administered during the spring.
- b) All percentages indicate the percent of respondents making this choice.

Source: Institutional Research

**NCRC Students Intending Ministry Vocations**  
based on the Vocational & Educational Preference Survey

(1994-95 comparable data not available)



## Enrollment by Major

### All Undergraduate Programs

Fall Term 2000-01	NCRC		NCMC		Total Traditional		ACDP**		Total	
	#	%	#	%	#	%	#	%	#	%
<b>NON-MAJORS</b>										
Undecided	344.0	37.7	59.0	11.3	403.0	28.1			403.0	23.1
Non-Matriculated	18.0	2.0	1.0	.2	19.0	1.3			19.0	1.1
<b>ASSOCIATE DEGREES</b>										
A.A. - General Education	6.0	.7	18.0	3.5	24.0	1.7			24.0	1.4
A.A. - Liberal Arts & Sciences: Science	2.0	.2	4.0	.8	6.0	.4			6.0	.3
A.S. - Business Administration	1.0	.1	4.0	.8	5.0	.3			5.0	.3
A.S. - Christian Work	1.0	.1	4.0	.8	5.0	.3			5.0	.3
<b>PROFESSIONAL MAJORS</b>										
Accounting	9.0	1.0			9.0	.6			9.0	.5
Business Administration	45.5	5.0	81.5	15.6	127.0	8.9			127.0	7.3
Christian Education	7.0	.8	1.5	.3	8.5	.6			8.5	.5
Communications	42.5	4.7	0.5	.1	43.0	3.0			43.0	2.5
Computer Science	21.5	2.4	18.0	3.5	39.5	2.8			39.5	2.3
Elementary Education	81.5	8.9	41.0	7.9	122.5	8.5			122.5	7.0
Interdisc: Internat'l. Political Economics										
Interdisc: Org. Mgmt & Church Studies (ADCP)							27.0	8.7	27.0	1.5
Math										
Missiology	18.0	2.0			18.0	1.3			18.0	1.0
Music Education	33.0	3.6			33.0	2.3			33.0	1.9
Organizational Mgmt (ADCP)							282.0	91.3	282.0	16.2
Pastoral Ministry	15.0	1.6	46.0	8.8	61.0	4.3			61.0	3.5
<b>Secondary Education:</b>										
Sec. Ed./English Track	3.0	.3			3.0	.2			3.0	.2
Sec. Ed./History Track	5.0	.5			5.0	.3			5.0	.3
Sec. Ed./Math Track	2.0	.2			2.0	.1			2.0	.1
Sec. Ed./Social Science Track										
Social Work	3.0	.3	12.0	2.3	15.0	1.0			15.0	.9
TESOL	7.0	.8			7.0	.5			7.0	.4
Youth Ministries	29.5	3.2	12.0	2.3	41.5	2.9			41.5	2.4
<b>LIBERAL ARTS MAJORS</b>										
Bible	21.0	2.3	82.0	15.7	103.0	7.2			103.0	5.9
Cross Cultural Studies	7.5	.8	0.5	.1	8.0	.6			8.0	.5
English	23.5	2.6	0.5	.1	24.0	1.7			24.0	1.4
History	12.5	1.4	2.0	.4	14.5	1.0			14.5	.8
Math	4.0	.4	1.0	.2	5.0	.3			5.0	.3
Philosophy	10.0	1.1			10.0	.7			10.0	.6
Psychology	63.5	7.0	90.5	17.4	154.0	10.7			154.0	8.8
Religion	19.0	2.1			19.0	1.3			19.0	1.1
Social Science	10.0	1.1	23.0	4.4	33.0	2.3			33.0	1.9
Soc. Sci./Secondary Ed. Track										
<b>MUSIC MAJORS</b>										
Music	27.5	3.0	16.0	3.1	43.5	3.0			43.5	2.5
Church Music	5.0	.5			5.0	.3			5.0	.3
Composition	3.0	.3			3.0	.2			3.0	.2
Keyboard/Orchestra	3.0	.3	1.0	.2	4.0	.3			4.0	.2
Voice	7.0	.8			7.0	.5			7.0	.4
<b>INTERDISC. - TRANSFERRED MAJORS</b>										
			1.0	.2	1.0	.1			1.0	.1
ADCP Prep***	1.0	.1	1.0	.2	2.0	.1			2.0	.1
SubTotal	912.0	100.0	521.0	100.0	1433.0	100.0	309.0	100.0	1742.0	100.0
Less: Double Majors (counted twice)										
<b>Total Enrollment</b>	<b>912.0</b>	<b>100.0</b>	<b>521.0</b>	<b>100.0</b>	<b>1433.0</b>	<b>100.0</b>	<b>309.0</b>	<b>100.0</b>	<b>1742.0</b>	<b>100.0</b>
<b>Interdisc. Majors*</b>										
	61.0	6.7	133.0	25.5	194.0	13.5			194.0	11.1

\* Unless in a pre-designed program, interdisciplinary majors are counted .5 in each of two disciplines.

\*\* ACDP includes all students who have registered for Semester 1 or 2 between February 1 and July 31.

\*\*\* "ADCP Prep" represents students enrolled in traditional program courses for purposes of fulfilling their pre-requisites for the ACDP program.

Source: Registrar's Office





## Enrollment: Major by Class

NCRC

Fall 2000	Freshmen		Sophomores		Juniors		Seniors		Total	
	#	%	#	%	#	%	#	%	#	%
<b>NON-MAJORS</b>										
Undecided	297	80.1	44	18.4	3	1.7			344	37.7
<b>ASSOCIATE DEGREES</b>										
A.A./General Education	1	.3	4	1.7	1	.6			6	.7
A.A./Lib. Arts & Sci.: Science			2	.8					2	.2
A.S./Business Admin.			1	.4					1	.1
A.S./Christian Work			1	.4					1	.1
<b>PROFESSIONAL MAJORS</b>										
Accounting	1	.3	1	.4	5	2.8	2	1.9	9	1.0
Business Administration	4	1.1	13	5.4	20	11.0	5	4.9	42	4.6
Christian Education			4	1.7	1	.6	1	1.0	6	.7
Communications	10	2.7	13	5.4	13	7.2	6	5.8	42	4.6
Computer Science	3	.8	10	4.2	7	3.9	1	1.0	21	2.3
Elementary Education	8	2.2	34	14.2	20	11.0	18	17.5	80	8.8
Math					1	.6	2	1.9	3	.3
Missiology	2	.5	4	1.7	4	2.2	4	3.9	14	1.5
Music Education	6	1.6	9	3.8	6	3.3	12	11.7	33	3.6
Pastoral Ministry			5	2.1	3	1.7			8	.9
Secondary Education:										
Sec. Ed./English Track			1	.4	1	.6	1	1.0	3	.3
Sec. Ed./History Track			3	1.3	2	1.1			5	.5
Sec. Ed./Math Track					1	.6	1	1.0	2	.2
Sec. Ed./Social Science Track										
TESOL			1	.4	6	3.3			7	.8
Youth Ministries			7	2.9	10	5.5	3	2.9	20	2.2
<b>LIBERAL ARTS MAJORS</b>										
Bible			7	2.9	4	2.2	1	1.0	12	1.3
Cross Cultural Studies			5	2.1			1	1.0	6	.7
English			2	.8	11	6.1	10	9.7	23	2.5
English/Sec. Ed. Track										
History	1	.3	3	1.3	2	1.1	4	3.9	10	1.1
History/Sec. Ed. Track										
Philosophy	1	.3	1	.4	3	1.7	3	2.9	8	.9
Psychology	8	2.2	20	8.4	17	9.4	9	8.7	54	5.9
Religion			1	.4	9	5.0	6	5.8	16	1.8
Social Science			4	1.7	4	2.2	1	1.0	9	1.0
Social Science/Sec. Ed. Track										
Social Work			2	.8	1	.6			3	.3
<b>MUSIC MAJORS</b>										
Music	14	3.8	8	3.3			2	1.9	24	2.6
Church Music	2	.5	2	.8			1	1.0	5	.5
Composition	2	.5			1	.6			3	.3
Keyboard/Orchestral Instrument	2	.5			1	.6			3	.3
Voice	4	1.1	2	.8	1	.6			7	.8
<b>INTERDISCIPLINARY MAJORS</b>										
B.A.			1	.4	2	1.1	3	2.9	6	.7
B.S.	4	1.1	24	10.0	21	11.6	6	5.8	55	6.0
ADCP Prep*	1	.3							1	.1
<b>SubTotal</b>	<b>371</b>	<b>100.0</b>	<b>239</b>	<b>100.0</b>	<b>181</b>	<b>100.0</b>	<b>103</b>	<b>100.0</b>	<b>894</b>	<b>98.0</b>
Plus: Non-Matriculated Students									18	2.0
Less: Double Majors (counted twice)										
<b>TOTAL ENROLLMENT</b>	<b>371</b>	<b>100.0</b>	<b>239</b>	<b>100.0</b>	<b>181</b>	<b>100.0</b>	<b>103</b>	<b>100.0</b>	<b>912</b>	<b>100.0</b>

\* "ADCP Prep" represents those students taking traditional program courses to fulfil pre-requisites for an ADCP degree.

Source: Registrar's Office

## Enrollment: Major by Class

NCMC

Fall 2000	Freshmen		Sophomores		Juniors		Seniors		Total	
	#	%	#	%	#	%	#	%	#	%
<b>NON-MAJORS</b>										
Undecided	60	16.2							60	11.5
<b>ASSOCIATE DEGREES</b>										
A.A./General Education	8	2.2	4	5.8	6	10.9			18	3.5
A.A./Lib. Arts & Sci.: Science	3	.8	1	1.4					4	.8
A.S./Business Admin.	2	.5	1	1.4	1	1.8			4	.8
A.S./Christian Work	3	.8	1	1.4					4	.8
<b>PROFESSIONAL MAJORS</b>										
Accounting										
Business Administration	57	15.4	8	11.6	7	12.7			72	13.8
Christian Education										
Communications										
Computer Science	17	4.6			1	1.8			18	3.5
Elementary Education	25	6.7	9	13.0	3	5.5	3	12.0	40	7.7
Math										
Missiology										
Music Education										
Pastoral Ministry	4	1.1	2	2.9	2	3.6			8	1.5
Secondary Education:										
Sec. Ed./English Track										
Sec. Ed./History Track										
Sec. Ed./Math Track										
Sec. Ed./Social Science Track										
TESOL										
Youth Ministries	1	.3							1	.2
<b>LIBERAL ARTS MAJORS</b>										
Bible	19	5.1	8	11.6	8	14.5	7	28.0	42	8.1
Cross Cultural Studies										
English										
English/Sec. Ed. Track										
History										
History/Sec. Ed. Track										
Philosophy										
Psychology	51	13.7	10	14.5	5	9.1	5	20.0	71	13.6
Religion										
Social Science	17	4.6	1	1.4	1	1.8			19	3.6
Social Science/Sec. Ed. Track										
Social Work	10	2.7	2	2.9					12	2.3
<b>MUSIC MAJORS</b>										
Music	11	3.0	1	1.4					12	2.3
Church Music										
Composition										
Keyboard/Orchestral Instrument										
Voice					1	1.8			1	.2
<b>INTERDISCIPLINARY MAJORS</b>										
B.A.	5	1.3	1	1.4	2	3.6	2	8.0	10	1.9
B.S.	78	21.0	20	29.0	18	32.7	7	28.0	123	23.6
ADCP Prep*							1	4.0	1	.2
SubTotal	371	100.0	69	100.0	55	100.0	25	100.0	520	99.8
Plus: Non-Matriculated Students									1	.2
Less: Double Majors (counted twice)										
<b>TOTAL ENROLLMENT</b>	<b>371</b>	<b>100.0</b>	<b>69</b>	<b>100.0</b>	<b>55</b>	<b>100.0</b>	<b>25</b>	<b>100.0</b>	<b>521</b>	<b>100.0</b>

\* "ADCP Prep" represents those students taking traditional program courses to fulfil pre-requisites for an ADCP degree.

Source: Registrar's Office

## Degrees Conferred by Major

### All Undergraduate Programs

*n/a = not available*

Academic Year:	1995-96		1996-97		1997-98		1998-99		1999-2000	
	#	%	#	%	#	%	#	%	#	%
<b>TRADITIONAL PROGRAMS</b>										
<b>ASSOCIATE DEGREES</b>										
Science	1	.7	2	1.9	2	1.8			4	2.5
Arts	7	5.1	4	3.9	5	4.5	7	5.1	8	5.0
Subtotal	8	5.9	6	5.8	7	6.3	7	5.1	12	7.5
<b>BACHELOR OF SCIENCE</b>										
Accounting							1	.7	5	3.1
Business Admin	18	13.2	7	6.8	6	5.4	14	10.3	14	8.7
Christian Ed	1	.7	1	1.0					3	1.9
Communications	6	4.4	6	5.8	2	1.8	7	5.1	12	7.5
Elementary Ed	14	10.3	16	15.5	16	14.4	16	11.8	14	8.7
Second. Ed/English			1	1.0			1	.7	1	.6
Second. Ed/History			1	1.0	1	.9	1	.7	2	1.2
Second. Ed/Social Science							1	.7		
Interdisciplinary	20	14.7	16	15.5	17	15.3	14	10.3	26	16.1
Missiology	2	1.5	1	1.0			5	3.7	3	1.9
Pastoral Ministry	3	2.2					1	.7	1	.6
Youth Ministry	3	2.2	5	4.9	7	6.3	4	2.9	6	3.7
Sub-total	67	49.3	54	52.4	49	44.1	65	47.8	87	54.0
<b>BACHELOR OF ARTS</b>										
Bible	5	3.7	3	2.9	9	8.1	11	8.1	7	4.3
Cross Cultural							1	.7		
English	7	5.1	3	2.9	5	4.5	5.5	4.0	5	3.1
Eng/Second.Ed Track	2	1.5	1	1.0	2	1.8	1	.7	3	1.9
History	4	2.9	1	1.0	3.5	3.2	5.5	4.0	3	1.9
Interdisciplinary	2	1.5	2	1.9	1	.9	2	1.5	6	3.7
Music							1	.7	1	.6
Philosophy	2	1.5	2	1.9	3.5	3.2	4	2.9		
Psychology	23	16.9	16	15.5	20	18.0	22	16.2	21	13.0
Religion	2	1.5					1	.7	5	3.1
Social Science	5	3.7	7	6.8	1	.9	4	2.9	3	1.9
ScoSci/Second.Ed Track	1	.7								
Sub-total	53	39.0	35	34.0	45	40.5	58	42.6	54	33.5
<b>BACHELOR OF MUSIC</b>										
Composition										
Keyboard/Instr	1	.7	3	2.9	1	.9			1	.6
Music Ed	2	1.5	4	3.9	6	5.4	4	2.9	5	3.1
Voice	2	1.5					1	.7		
Sub-total	5	3.7	7	6.8	7	6.3	5	3.7	6	3.7
<b>BACHELOR OF SACRED MUSIC</b>										
Church Music	3	2.2	1	1.0	3	2.7	1	.7	2	1.2
<b>Total Traditional</b>	<b>136</b>	<b>100.0</b>	<b>103</b>	<b>100.0</b>	<b>111</b>	<b>100.0</b>	<b>136</b>	<b>100.0</b>	<b>161</b>	<b>100.0</b>
<i>Double Majors included above</i>	<i>n/a</i>		<i>n/a</i>		<i>n/a</i>		<i>1</i>	<i>.7</i>		
<b>ADULT DEGREE COMPLETION PROGRAM</b>										
Organizational Mgmt							123	86.0	153	94.4
Org. Mgmt & Church Studies							20	14.0	9	5.6
<b>Total ADCP</b>	<b>171</b>	<b>100.0</b>	<b>157</b>	<b>100.0</b>	<b>173</b>	<b>100.0</b>	<b>143</b>	<b>100.0</b>	<b>162</b>	<b>100.0</b>
<b>TOTAL UNDERGRADUATE</b>	<b>307</b>		<b>260</b>		<b>284</b>		<b>279</b>		<b>323</b>	

NOTE: Double majors count .5 for each major.

Source: Registrar's Office



## Faculty Summary

### Resident Faculty\* - All Undergraduate Programs

	NCRC		NMC		Total Traditional		ADCP		Total Undergraduate Programs	
	#	%	#	%	#	%	#	%	#	%
<b>2000-01</b>										
<b>Total Headcount</b>	60	100.0	20	100.0	80	100.0	7	100.0	87	100.0
<b>With Tenure</b>	6	10.0	1	5.0	7	8.8			7	8.0
<b>Rank</b>										
Professor	21	35.0	2	10.0	23	28.8	1	14.3	24	27.6
Associate Professor	10	16.7	5	25.0	15	18.8	2	28.6	17	19.5
Assistant Professor	20	33.3	8	40.0	28	35.0	3	42.9	31	35.6
Instructor	9	15.0	4	20.0	13	16.3	2	28.6	15	17.2
Without rank			1	5.0	1	1.3			1	1.1
<b>Degrees</b>										
Doctorate	30	50.0	9	45.0	39	48.8	3	42.9	42	48.3
Master	27	45.0	10	50.0	37	46.3	5	71.4	42	48.3
Bachelor	3	5.0	1	5.0	4	5.0			4	4.6
Certificate										
<b>Gender</b>										
Male	39	65.0	10	50.0	49	61.3	3	42.9	52	59.8
Female	21	35.0	10	50.0	31	38.8	5	71.4	36	41.4
<b>Ethnicity</b>										
Asian	4	6.7	6	30.0	10	12.5			10	11.5
Black Non-Hispanic	4	6.7	3	15.0	7	8.8	1	14.3	8	9.2
Caucasian	50	83.3	9	45.0	59	73.8	7	100.0	66	75.9
Hispanic	2	3.3	2	10.0	4	5.0			4	4.6
Multi-racial										
<b>Type</b>										
Administrative	10	16.7	9	45.0	19	23.8	5	71.4	24	27.6
Instructional	50	83.3	11	55.0	61	76.3	3	42.9	64	73.6
<i>Half-time contracts included above</i>	3								3	

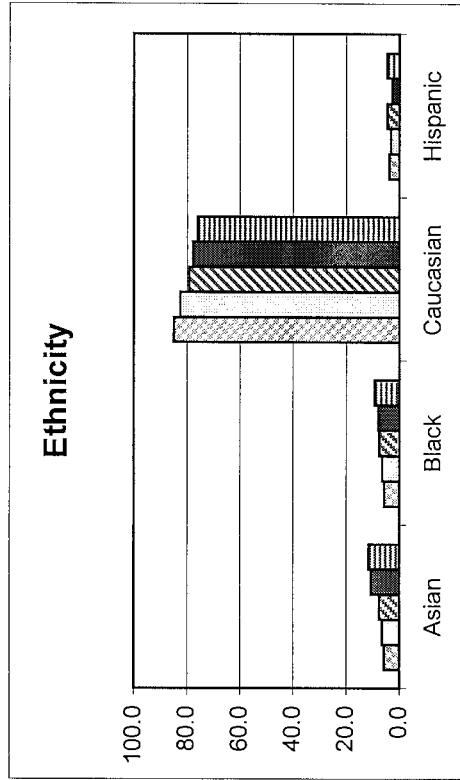
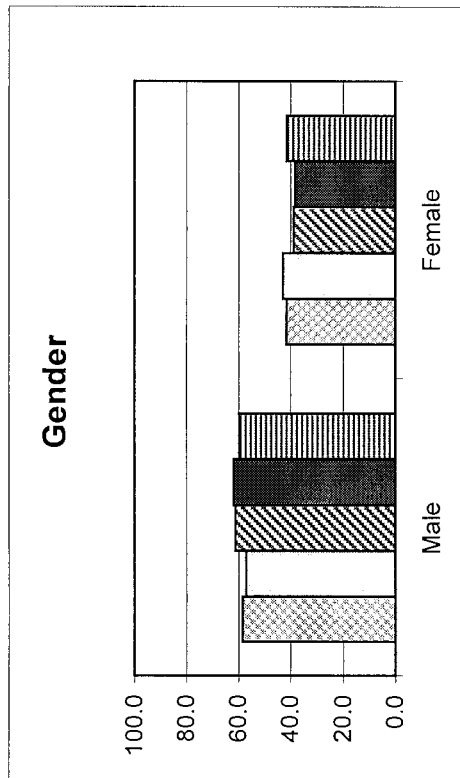
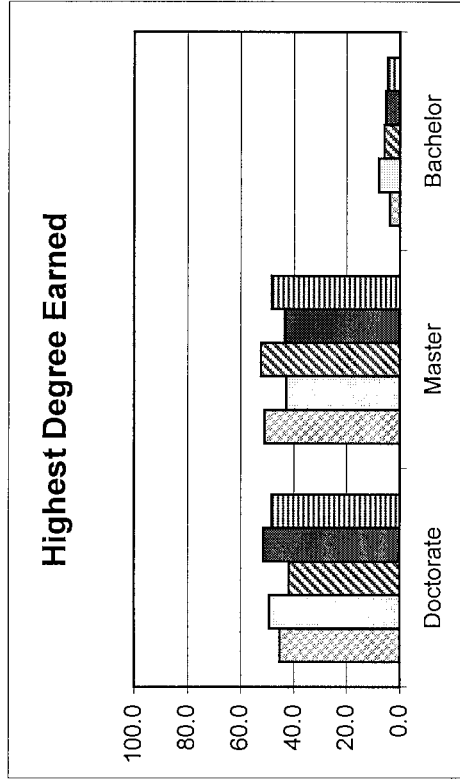
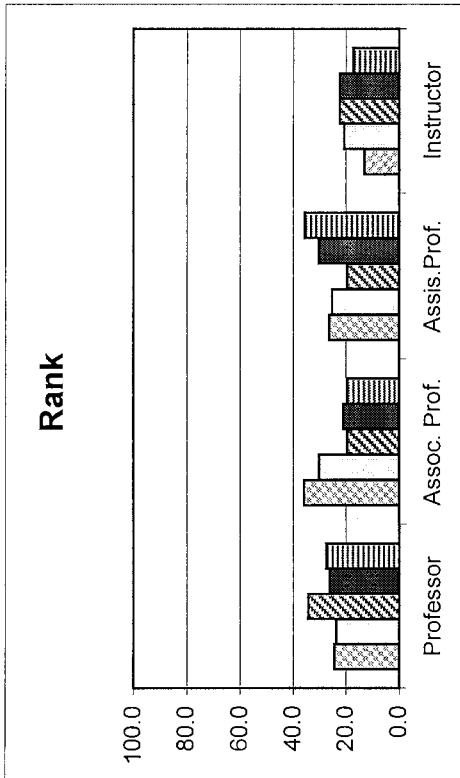
\* Instructional and administrative faculty; adjuncts excluded

### Student/Faculty Ratio

NCRC	NMC	Total Traditional
16:1	14:1	16:1

Source: Academic Offices  
Revised

**Historical Summary of Resident Teaching and Administrative Faculty**  
 All Undergraduate Programs Combined  
*(all charts indicate percentages)*



## Staff Summary

### All Undergraduate Programs

Fall Term:	Nyack Campus (NCRC & ADCP)		NCMC		Total		Prior Year	
	#	%	#	%	#	%	#	%
<b>Total Headcount</b>	115	100.0	26	100.0	<b>141</b>	<b>100.0</b>	119	100.0
<b>Years of Service</b>								
Less than 5	81	70.4	26	100.0	<b>107</b>	<b>75.9</b>	88	73.9
5 to 9	20	17.4			<b>20</b>	<b>14.2</b>	19	16.0
10 to 14	8	7.0			<b>8</b>	<b>5.7</b>	5	4.2
15 or more	6	5.2			<b>6</b>	<b>4.3</b>	7	5.9
<b>Degrees</b>								
Doctorate								
Master	18	15.7	2	7.7	<b>20</b>	<b>14.2</b>	18	15.1
Bachelor	47	40.9	10	38.5	<b>57</b>	<b>40.4</b>	51	42.9
Associate	11	9.6	4	15.4	<b>15</b>	<b>10.6</b>	6	5.0
None	39	33.9	10	38.5	<b>49</b>	<b>34.8</b>	44	37.0
<b>Gender</b>								
Male	51	44.3	9	34.6	<b>60</b>	<b>42.6</b>	53	44.5
Female	64	55.7	17	65.4	<b>81</b>	<b>57.4</b>	66	55.5
<b>Ethnicity</b>								
Asian	8	7.0	3	11.5	<b>11</b>	<b>7.8</b>	9	7.6
Black Non-Hispanic	7	6.1	14	53.8	<b>21</b>	<b>14.9</b>	12	10.1
Caucasian	82	71.3	4	15.4	<b>86</b>	<b>61.0</b>	72	60.5
Hispanic	17	14.8	5	19.2	<b>22</b>	<b>15.6</b>	23	19.3
Multi-racial	1	0.9			<b>1</b>	<b>0.7</b>	3	2.5

Source: Office of the Treasurer





# Facilities

## All Undergraduate Programs

Total Acreage Owned 65

Basic Structures	Floors	Sq Ft	Primary Functions
Bailey Library	2	20,021	Library, Offices, Labs
Bell Tower House	2	1,600	Offices
Bethany Hall	2.5	3,448	Staff Housing, Student Housing
Bethel	2	2,000	Chaplain's Residence
Bethesda	2	2,748	President's Residence
Betty Olsen House	2	1,928	Offices & Labs
Boon Campus Center	4	55,380	Student Center, Dining Hall, Classrooms, Offices, Post Office, Bookstore
Bowman Gym	2	16,014	Gymnasium & Athletic Offices
Brewer		2,000	Student Housing
Christie Hall	B-4	37,693	Dormitory, Offices
Driscoll Cottage	3	5,763	Missionary-In-Residence (MIR) Housing, Student Housing
Dunbar Hall	2	13,924	Student Housing
Duplex	1.5	4,334	Student Housing
Gables	2.5	2,852	Staff Housing
Griswold Cottage	2	2,660	Student Housing
Harmony Hall	3	4,653	Student Housing
Hilltop (Rented)	1	11,820	Classrooms, Offices, Auditorium, Labs, Fitness Center
Lawrence Avenue		2,000	Staff Housing
Lookout	2	2,512	Offices
Maintenance Building	1	4,049	Offices, Shop & Garage
Moseley Hall	4	40,663	Dormitory, Classrooms, Offices
Music Education Building	2	1,801	Classrooms, Offices
Oakwood Apartments	1	880	Staff Housing
Pomona		1,000	Student Housing
Pardington Annex	2	2,198	Practice Rooms
Pardington Hall	B-4	22,740	Auditorium, Classrooms, Offices
Rockwood Cottage	3	6,000	Student Housing
Shingles		1,500	Student Housing
Shuman Hall	B-2	23,194	Offices, Conference Rooms
Simpson Hall	B-4	53,040	Dormitory, Classrooms
Sky Island Lodge	2	4,800	Classrooms, Offices
Sub-Total		<u>355,215</u>	
Roseberry	2	<u>5,120</u>	ADCP Offices
335 Broadway, Manhattan	2	13,500	NCMC Offices, Auditorium, Classrooms
200 Church Street, Manhattan	1	9,800	NCMC Offices, Classrooms
Sub-Total		<u>23,300</u>	
Total		<u><u>383,635</u></u>	

### Dorm Capacity For Students

Bethany	13
Brewer	19
Christie Hall	197
Driscoll Cottage	8
Dunbar Hall	64
Duplex	15
Griswold Cottage	15
Harmony	25
Moseley Hall	213
Oakwood	6
Rockwood Cottage	11
Shingles (Sunnyside)	11
Simpson Hall	186
Total	<u><u>783</u></u>

Source: Budget Office



# Financial History

All Undergraduate Programs  
(S000's)

Fiscal Year:	1995-96		1996-97		1997-98		1998-99		1999-00	
	\$	%	\$	%	\$	%	\$	%	\$	%
<b>TUITION &amp; FEES:</b>										
Traditional Tuition	5,661	45.3	7,073	48.2	8,562	51.3	10,522	53.6	13,378	56.8
ADCP Tuition	2,258	18.1	2,200	15.0	2,612	15.6	2,949	15.0	2,996	12.7
Fees	571	4.6	752	5.1	820	4.9	899	4.6	1,054	4.5
<b>Total Tuition &amp; Fees</b>	<b>8,490</b>	<b>68.0</b>	<b>10,025</b>	<b>68.3</b>	<b>11,994</b>	<b>71.9</b>	<b>14,370</b>	<b>73.2</b>	<b>17,428</b>	<b>74.0</b>
<b>OTHER SOURCES OF INCOME:</b>										
Private Gifts & Grants	349	2.8	379	2.6	558	3.3	547	2.8	500	2.1
C&MA Grants	341	2.7	346	2.4	347	2.1	345	1.8	346	1.5
Auxiliaries, Sales & Services	2,808	22.5	3,472	23.6	3,529	21.1	3,793	19.3	4,322	18.3
Miscellaneous	504	4.0	464	3.2	264	1.6	588	3.0	963	4.1
<b>Total Current Fund Revenue</b>	<b>12,491</b>	<b>100.0</b>	<b>14,686</b>	<b>100.0</b>	<b>16,692</b>	<b>100.0</b>	<b>19,643</b>	<b>100.0</b>	<b>23,559</b>	<b>100.0</b>
<b>CURRENT FUND EXPENSES:</b>										
Instruction/Academic Support	3,835	30.7	4,303	29.3	5,468	32.8	6,646	33.8	6,296	26.7
Student Services & Financial Aid	3,189	25.5	4,160	28.3	5,163	30.9	6,741	34.3	9,717	41.2
Institutional Support, Int. & Deprec.	2,252	18.0	2,474	16.8	2,523	15.1	2,241	11.4	3,024	12.8
Operation of Plant	1,132	9.1	1,323	9.0	1,323	7.9	1,525	7.8	1,755	7.4
Auxiliary Services	2,071	16.6	2,397	16.3	2,143	12.8	2,132	10.9	2,305	9.8
<b>Total Current Fund Expenses</b>	<b>12,480</b>	<b>99.9</b>	<b>14,657</b>	<b>99.8</b>	<b>16,620</b>	<b>99.6</b>	<b>19,285</b>	<b>98.2</b>	<b>23,097</b>	<b>98.0</b>
<b>TOTAL INCR. (DECR.) IN FUND BAL.</b>	<b>11</b>	<b>0.1</b>	<b>29</b>	<b>0.2</b>	<b>72</b>	<b>0.4</b>	<b>358</b>	<b>1.8</b>	<b>462</b>	<b>2.0</b>

Source: Office of the Treasurer

## Tuition & Fees Schedule

### NCRC

FALL TERM	1996	1997	1998	1999	2000
<b>Tuition</b>					
<b>12-18 Credits</b>	<b>\$4,830</b>	<b>\$5,200</b>	<b>\$5,450</b>	<b>\$5,720</b>	<b>\$5,995</b>
Less than 12 credits ( <i>per credit</i> )	400	430	455	480	500
More than 18 credits ( <i>per credit</i> )	270	290	300	320	335
Auditing: Part-time students ( <i>per credit</i> )	150	100	100	100	100
<b>Comprehensive Fees</b>					
1-6 credits	50	50	60	60	60
7-11 credits	100	100	120	120	120
<b>12 or more credits</b>	<b>250</b>	<b>250</b>	<b>275</b>	<b>275</b>	<b>275</b>
<b>Technology Fee</b>					
1-11 credits		50	50	50	50
<b>12 or more credits</b>	<b>100</b>	<b>100</b>	<b>100</b>	<b>100</b>	<b>100</b>
<b>Resident Fees</b>					
<b>Double dormitory room, except Moseley South*</b>	<b>2,210</b>	<b>2,430</b>	<b>2,670</b>	<b>2,800</b>	<b>2,900</b>
Double room, Moseley South*	2,210	2,575	2,830	2,970	3,100
Single room, Christie Hall	2,345	2,575	2,830	2,970	3,100
Apartment ( <i>except Dunbar</i> )	2,210	2,575	2,830	2,970	3,300
Dunbar			3,165	3,320	3,100
Double dormitory room with private bath	2,620	2,880	3,165	3,320	3,450
Single dormitory room, <i>except Christie Hall</i>	2,620	2,880	3,165	3,320	3,450
* <i>Triple occupancy discount off double rate</i>			(250)	(250)	(250)
* <i>Quad occupancy discount off double rate</i>			(300)	(300)	(300)
<b>Course Fees (NOTE: Other fees may apply)</b>					
Old Testament (BIB102) Walk Through the Bible			15	25	25
Intro to Computers--Lab fee	25	25	25	25	25
Edu./Student Teach. Placemt. ( <i>per course</i> )	100	100	100	100	100
Edu./Sr. Seminar/Stud. Teaching Sem. ( <i>per course</i> )	50	50	50	50	50
Educ/Music in Elem. Schools	25	25	25	25	25
Fine Arts	25	25	40	50	50
Bowling	50	50	50	50	50
Science Lab ( <i>Bio, Chem, Anat/Phys, Ecology, Physics</i> )	25	25	50	50	50
<b>Private Music Lessons: Piano, organ, voice, instrumental</b>					
(per credit or 1/2 hr. of instruction)	150	160	195	210	225
<b>Miscellaneous Fees</b>					
Late Registration	50	100	50	50	50
Graduation application fee	50	50	50	35	
<b>Motor Vehicle Registration:</b>					
Campus Resident	30	50	75	75	75
Commuter	15	15	15	25	25
Refrigerator Fee	30	30	30	30	30
Orientation Fee ( <i>new students, fall sem. only</i> )	25	25	25	50	50
<b>Total Base Charges, Full-time Resident Student</b>					
	<b>\$7,390</b>	<b>\$7,980</b>	<b>\$8,495</b>	<b>\$8,895</b>	<b>\$9,270</b>
<b>Increase from Prior Year</b>					
	<b>8.8%</b>	<b>8.0%</b>	<b>6.5%</b>	<b>4.7%</b>	<b>4.2%</b>

Source: Student Accounts