

**THE NYACK COLLEGE
FACT BOOK**

1990-91

FOREWORD

The purpose of this Fact Book is to centralize and standardize data about Nyack College which can be utilized for planning, public relations, accreditation reviews, etc.

This is the fourth annual edition of the Fact Book. Additional data has been added in a few areas but the basic composition has remained the same.

Each year since the first edition of this document, which was in 1988-89, there have been improvements and refinements to the format and quality of the data that is collected. However, your suggestions for improvement or information regarding areas that have been overlooked would be greatly appreciated.

Since the scope of this book is the entire institution, it has been necessary to collect data from many departments. I again thank you for your cooperation in helping to gather the data for this book. I want to especially thank the Executive Assistant to the President, Ronald Ruegsegger, for his support in this endeavor and also for the use of his computer.

Kimberly S. Farrell
Director of Institutional Research

TABLE OF CONTENTS

I.	Institutional Profile	p.	1
A.	Board of Trustees: Members	p.	2
B.	Board of Trustees: Committees	p.	3
C.	Nyack College Organizational Charts		
1.	Central Administration	p.	4
2.	Finance	p.	5
3.	Academic Affairs	p.	6
4.	Student Development	p.	7
5.	Advancement	p.	8
II.	Students	p.	9
A.	Enrollment Summary	p.	10
B.	FTE Enrollment	p.	11
C.	Head Count Enrollment	p.	12
D.	Adult Program Enrollment	p.	13
E.	Enrollment by State of Origin		
1.	Summary Table	p.	14
2.	Mid-Atlantic Region	p.	15
3.	Other Regions	p.	16
F.	Enrollment by County	p.	17
G.	Enrollment by Denominational Affiliation		
1.	Summary Table	p.	19
2.	The Christian & Missionary Alliance	p.	20
3.	Other Denominations	p.	21
H.	Enrollment by Race and Gender	p.	22
I.	Enrollment by Marital Status and Age	p.	23
J.	Vocational and Educational Intentions		
1.	Vocational Intentions	p.	24
2.	Church Related Verses Non-Church Related Vocational Intentions	p.	25
K.	Testing Results		
1.	Freshmen SAT Scores	p.	26
2.	National Teacher Examination	p.	26
3.	Major Field Achievement Tests	p.	27
L.	Retention Rates		
1.	Fall Enrollment of Freshmen and Transfers	p.	29
2.	Fall Enrollment of Freshmen	p.	30
3.	Fall Enrollment of Transfers	p.	31
4.	Student Organizations	p.	32
III.	Curriculum	p.	34
A.	Enrollment by Class, Major, Full-Time, and Part-Time	p.	35
B.	Degrees Conferred By Major	p.	36
C.	Divisional Productivity	p.	37
D.	Deviation from Average Cost/Credit Hour	p.	38
D.	Cost Per Major	p.	39

IV.	Faculty and Staff	p. 40
A.	Faculty Summary	p. 41
B.	Faculty by Rank, Gender, Status, Service, and Race	p. 42
C.	Staff by Rank, Gender, Race, Service, and Degree	p. 44
V.	Alumni	p. 46
A.	Alumni Support Summary Table	p. 47
B.	Alumni Support Dollars	p. 48
C.	Number of Alumni Donors	p. 49
VI.	Facilities	p. 50
A.	Square Footage and Functions	p. 51
VII.	Finances	p. 52
A.	Financial History	p. 53
B.	Student Aid	p. 54

**III
I
N
S
T
I
T
U
T
I
O
N
A
L
P
R
O
F
I
L
E
III**

BOARD OF TRUSTEES MEMBERS

TERM EXPIRES SEPTEMBER 1991

Mr. Peter Dys
Executive Director, Shell Point Village
Ft. Myers, FL

Rev. Paul Hazlett
District Superintendent
Metropolitan District, The C & M A
N. Plainfield, NJ

Dr. Robert E. Nanfelt
Retired, President, US Fused Quartz
Chairman of the Board of Trustees
Morristown, NJ

Mr. Robert L. Sanford
Retired, President, International Division of Nabisco Corp.
Bernardsville, NJ

TERM EXPIRES SEPTEMBER 1992

Dr. Richard W. Bailey
Vice President for Church Ministries, The Christian and
Missionary Alliance
Colorado Springs, CO

Rev. Cornelius W. Clarke
District Superintendent
New England District, The C & M A
So. Easton, MA

Rev. Rockwell L. Dillaman
Pastor, Allegheny Center C & M A Church
Pittsburgh, PA

Mr. James Gilbert
Public School Teacher, President, Nyack College Alumni
Association
New City, NY

Dr. Walter J. Helsing
Retired, Orthopedic Surgeon
Beaver, PA

Rev. David K. Muir
Pastor C & M A Church
North East, PA

Dr. Donald L. Paine
Pastor, C & M A Pineview Community Church
Albany, NY

Dr. Donald V. Seibert*
Retired - CEO J.C. Penny Co., Inc
Chancellor, Nyack College/Alliance Theological Seminary
Murray Hill, NJ

Dr. Woodford C. Stemple
District Superintendent
Northeastern District, The C & M A
Rome, NY

TERM EXPIRES SEPTEMBER 1993

Miss Rose-Marie Armstrong
NYC Area Director of Prison Fellowship
NYC, NY

Mr. Ronald E. Eastman
Group Vice-President, International Lodging Development, Marriott
Corp.
Rockville, MD

Mr. Paul D. Glenn
US Dept of Treasury, Office of Thrift Supervision
Secretary of the Board of Trustees
Annadale, VA

Mr. Clarence Guienze
Retired Executive Assistant in Northeast Regional Office, Federal
Bureau of Prisons, Dept. of Justice
Cherry Hill, NJ

Dr. James R. Isler
Retired, Colonel, USAF, Engineer, Kaman Sciences Corp.
Colorado Springs, CO

Mrs. Susan Brown Meenehan
President - ATS Alumni Association
Pittsburgh, PA

Dr. David L. Rambo *
President, The Christian and Missionary Alliance
Colorado Springs, CO

Rev. Dahl B. Seckinger
District Superintendent, Great Lakes District,
The C & M A
Ann Arbor, MI

Mr. Ronald L. Wilson
Commercial Realtor
Orlando, FL

TERM EXPIRES SEPTEMBER 1994

Mr. Rexford A. Boda*
President, Nyack College
Nyack, NY

Dr. Paul F. Bubna*
President, Alliance Theological Seminary
Nyack, NY

Mr. Duane A. Wheeland*
Vice President for Finance/Treasurer, The
Christian and Missionary Alliance
Colorado Springs, CO

*Ex-Officio Members
(Members of the Board of Trustees are elected by the C & MA Board of Managers)

COMMITTEES OF THE BOARD OF TRUSTEES

Nyack College/Alliance Theological Seminary

EXECUTIVE COMMITTEE

Robert E. Nanfelt, Chairman
Donald V. Seibert, Vice Chairman
Paul D. Glenn, Secretary
Rexford A. Boda
Peter Dys
Ron Eastman
Paul Hazlett
Robert Sanford
Duane Wheeland

COMMITTEE ON ACADEMIC AFFAIRS, NYACK COLLEGE

Walter J. Helsing - Chairman
Paul D. Glenn
Cornelius W. Clarke
James R. Isler

COMMITTEE ON ACADEMIC AFFAIRS - ATS

David L. Rambo - Chairman
Richard W. Bailey
Rockwell L. Dillaman
Susan Brown Meeneghan

COMMITTEE ON BUDGET AND FINANCE

Ronald E. Eastman - Chairman
Peter Dys
Robert E. Nanfelt
Duane Wheeland

COMMITTEE ON BUILDINGS AND GROUNDS

Ronald Wilson - Chairman
Clarence Guienze
Woodford Stemple

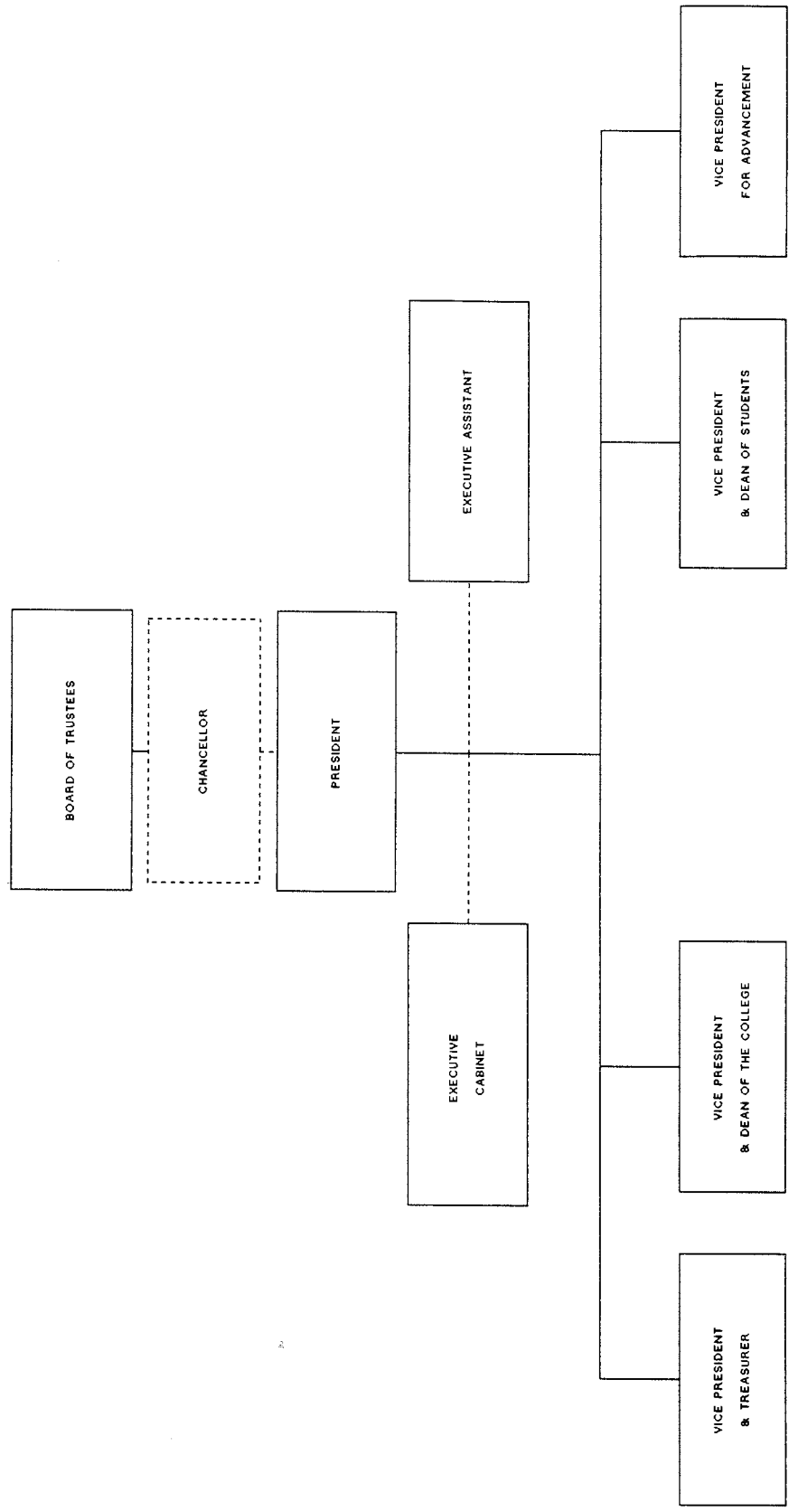
COMMITTEE ON PROMOTION & DEVELOPMENT

Donald V. Seibert, Chairman
James Gilbert
Robert Sanford
Rose-Marie Armstrong

COMMITTEE ON SPIRITUAL & STUDENT AFFAIRS

Dahl B. Seckinger - Chairman
Paul Hazlett
David K. Muir
Donald Paine

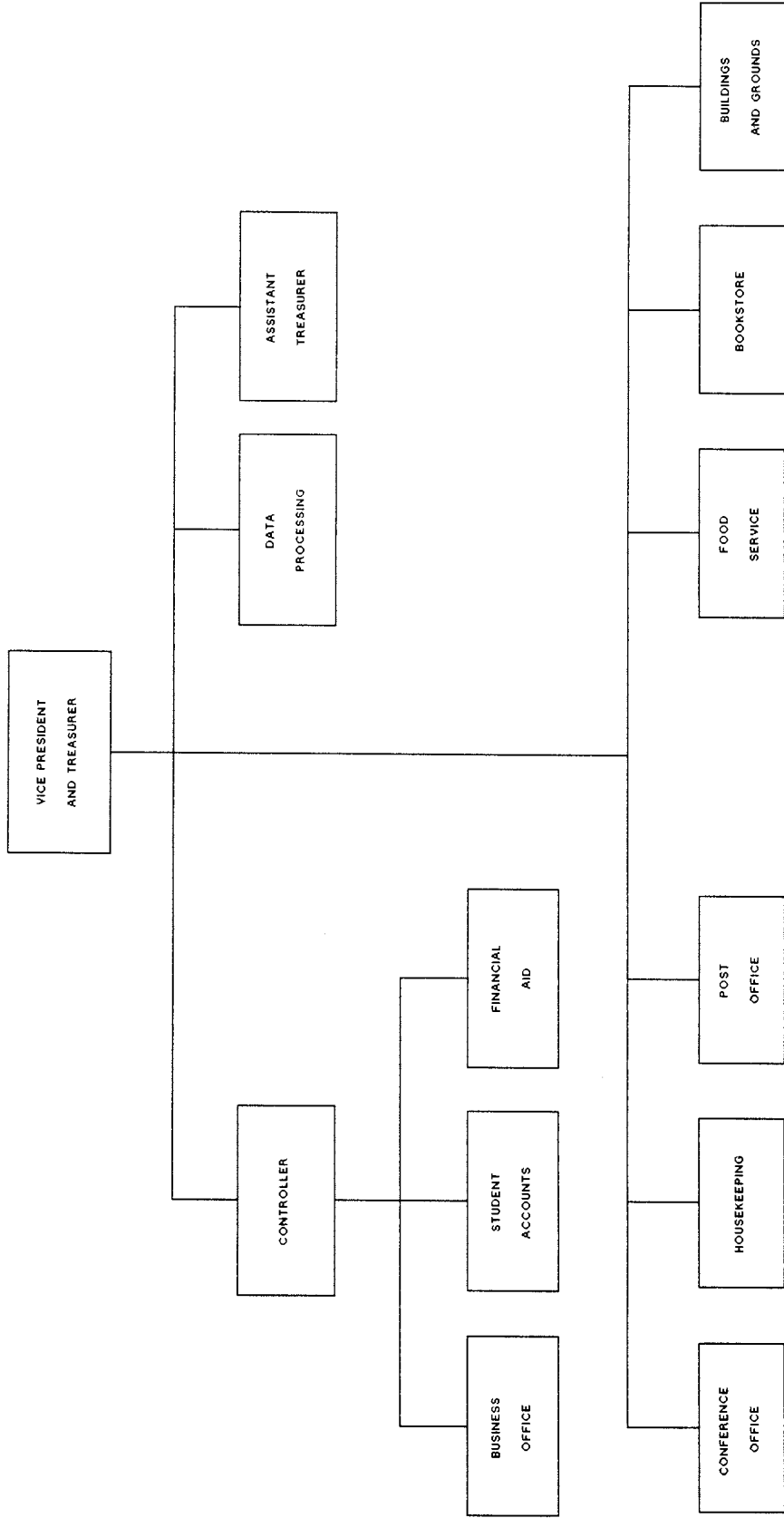
NYACK COLLEGE CENTRAL ADMINISTRATION



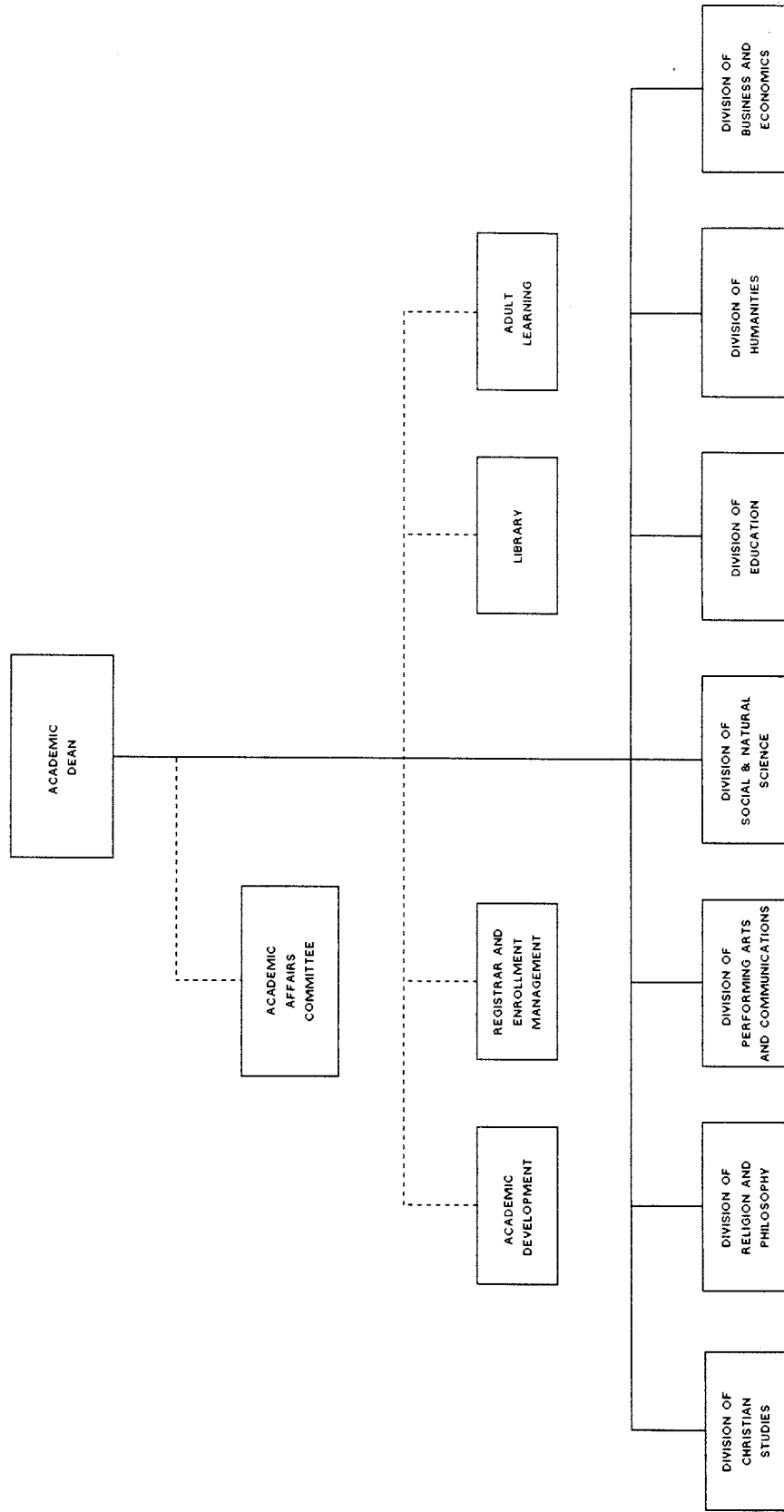
Solid line = Line position
Dotted line = Staff position

Prepared by Ron Rueggeger
7-23-91

NYACK COLLEGE FINANCE



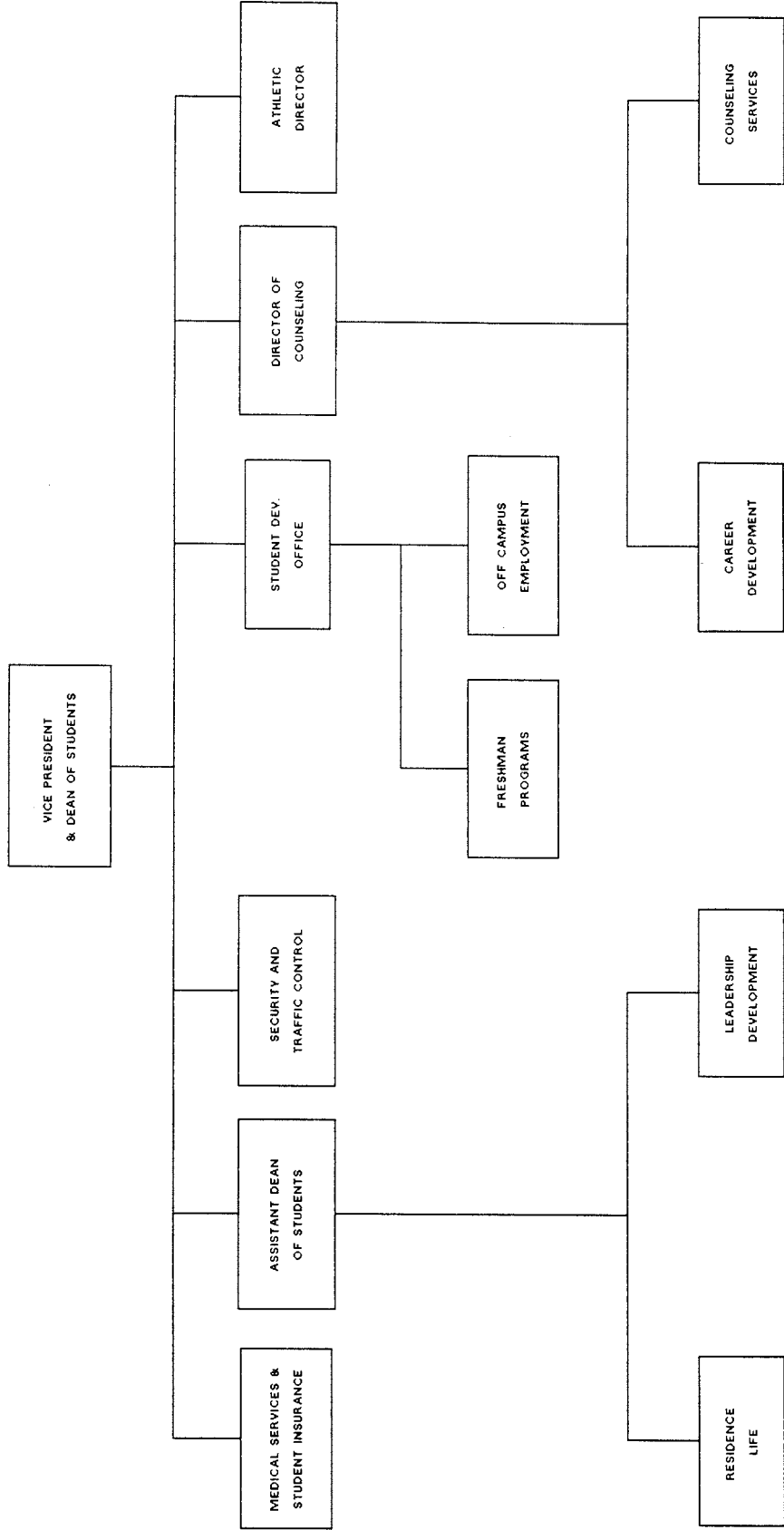
NYACK COLLEGE ACADEMIC AFFAIRS



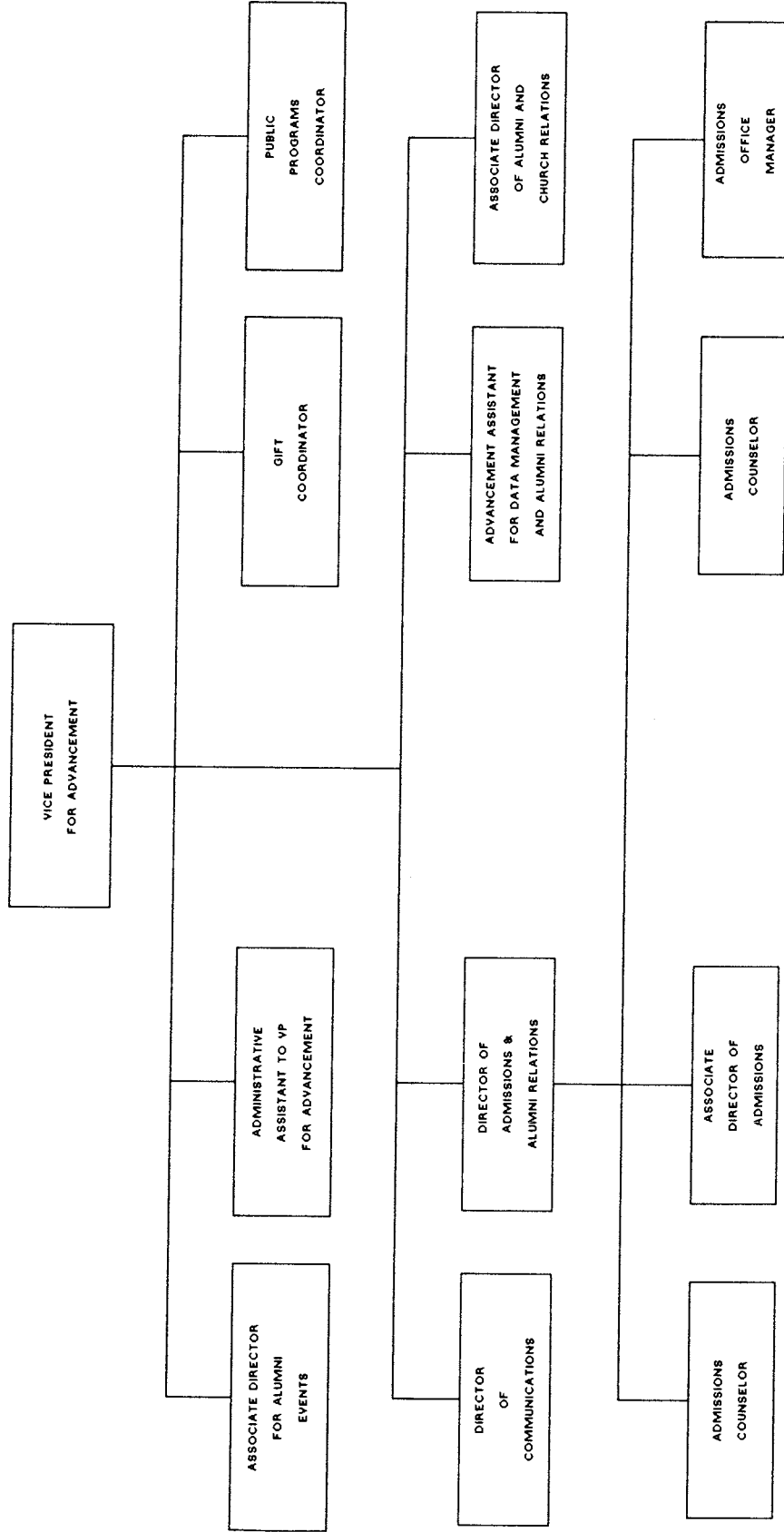
Solid line = Academic Divisions
Dotted line = staff support

Prepared by Ron Rueggeger

NYACK COLLEGE STUDENT DEVELOPMENT



NYACK COLLEGE ADVANCEMENT



A decorative graphic consisting of a central vertical bar with the word "STUDENTS" written vertically inside it. The word is in a bold, sans-serif font. On either side of the central bar, there are three shorter vertical bars of varying lengths, creating a symmetrical, stylized border.

STUDENTS

ENROLLMENT SUMMARY

The number of students enrolled at Nyack College decreased during the mid 1980's. Since 1985 in which Nyack experienced its lowest enrollment there has been a slow upward trend. The traditional students on the Nyack campus had been increasing until this current school year (1990-91). The enrollment fell from 540 in 1989 to 516 in 1990, a decrease of 24 students. The enrollment for the Adult Degree Program has increased from 33 students in 1989 to 68 students in 1990. Overall enrollment has increased by 100 students since 1985.

FTE has followed a similiar trend with that of headcount. There has been an increase of 71.1 since 1985 (Fall FTE for 1985 = 508.8, Fall FTE for 1990 = 579.9).

Headcount				
Fall	Nyack Campus	Ext. Sites	Adult Pro.	Total
1980	561	13		574
1981	569	33		602
1982	519	33		552
1983	544	28		572
1984	530	39		569
1985	477	34		511
1986	490	29		519
1987	511	35		546
1988	514	30		544
1989	540	18	*33	591
1990	516	27	*68	611

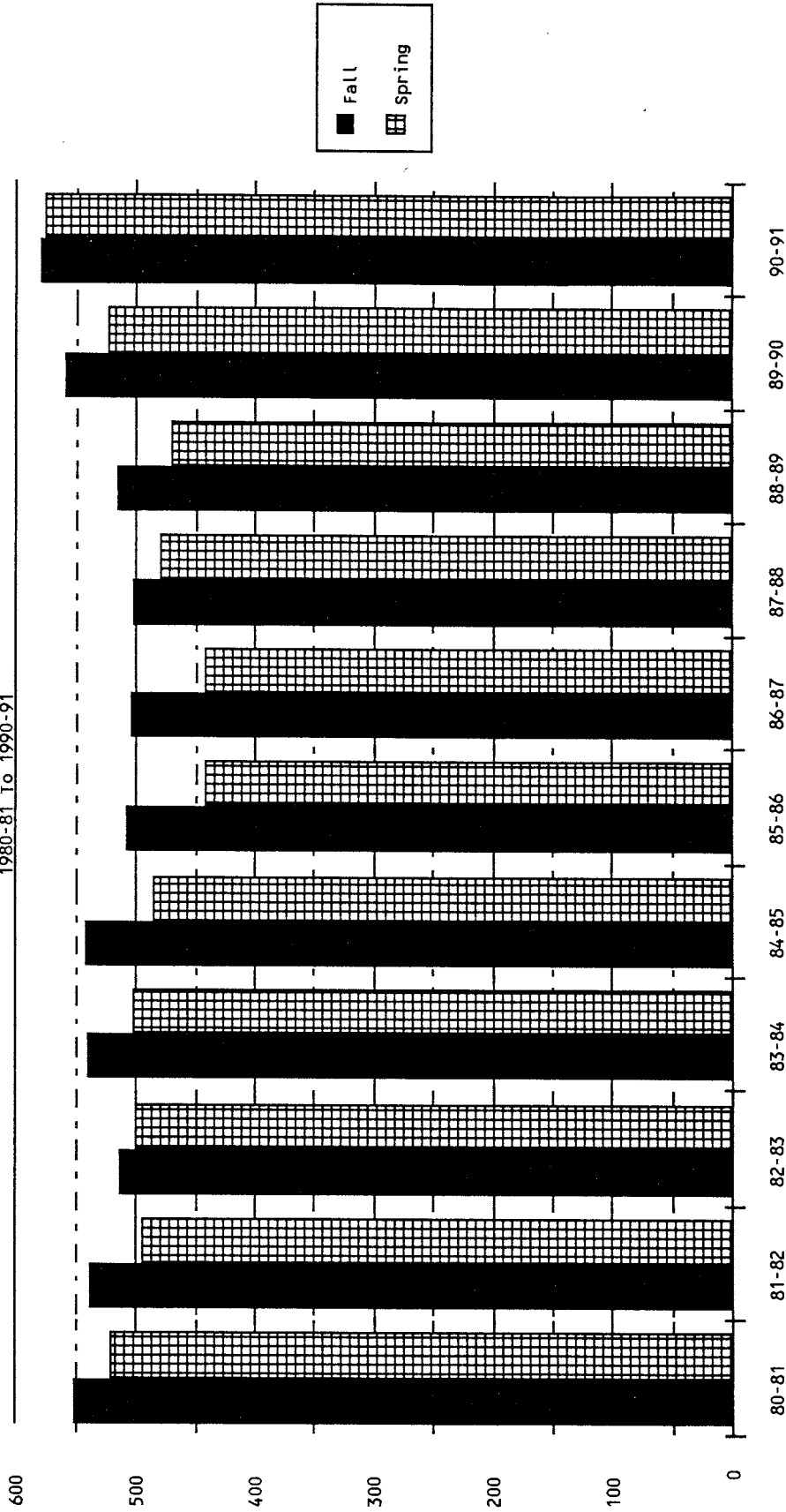
FTE				
Fall	Nyack Campus	Ext. Sites	Adult Pro.	Total
1980				551.8
1981				538.4
1982				513.3
1983				540.2
1984				542.3
1985	489.5	19.3		508.8
1986	493.6	11.3		504.9
1987	488.8	14.3		503.1
1988	497.2	18.8		516
1989	514.3	12	*33	559.3
1990	492.2	19.7	*89	600.9

*Fall enrollment for the Adult degree program is based on the number of students who register for either 1st or 2nd semester between, February 1 and July 31.
 Spring enrollment is based on the number of students who register for 1st or 2nd semester, between August 1 and January 31

FTE ENROLLMENT

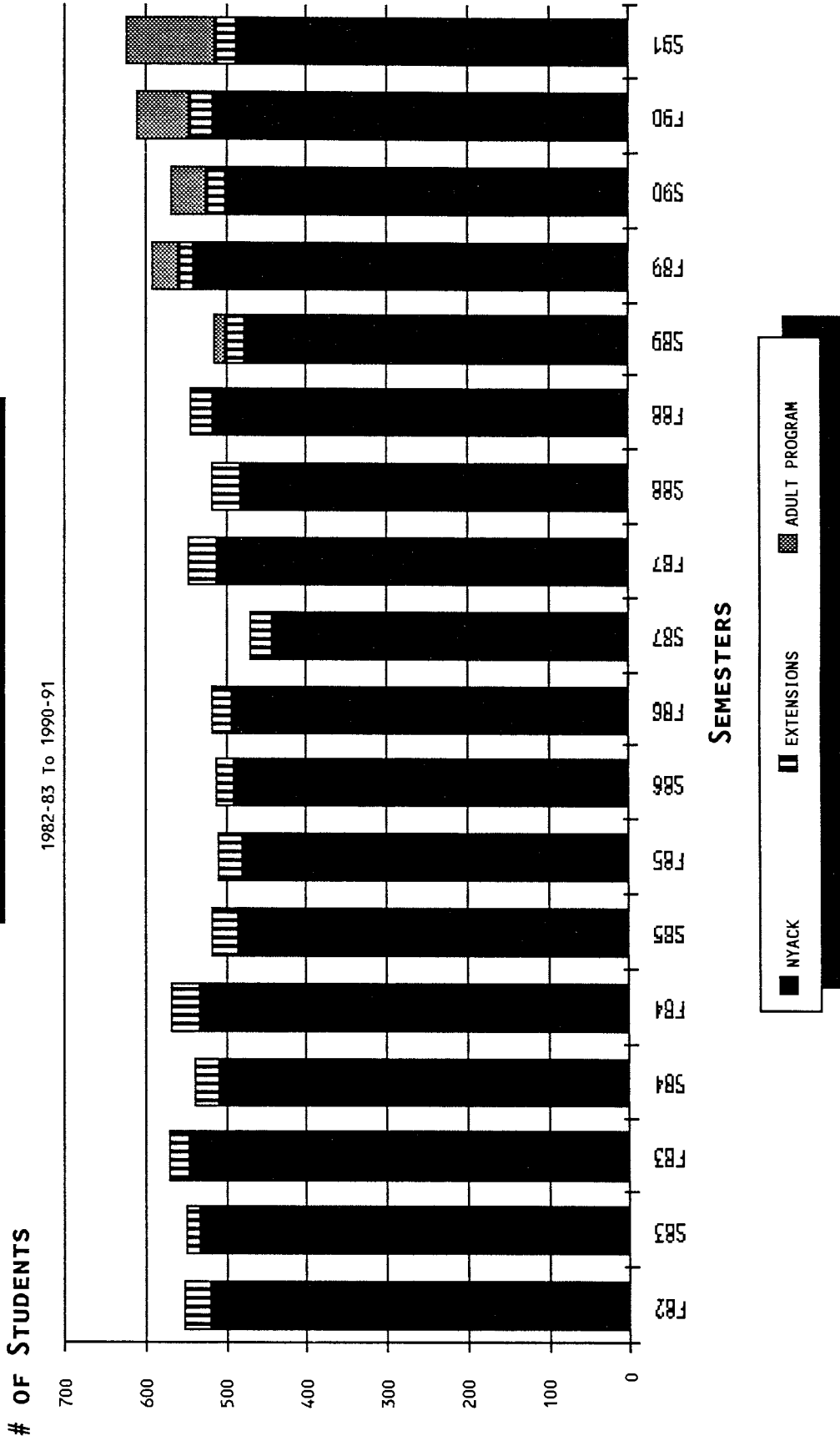
Full-Time Equivalency

1980-81 To 1990-91



Semesters
 Adult Program included as of 1989-90
 Extension Sites included

HEAD COUNT ENROLLMENT



THE 1990 FALL ENROLLMENT FOR THE ADULT DEGREE PROGRAM

All students enrolled are full-time, senior class status, and are majors in Organizational Management. All students who have registered for Semester 1 or 2 during the period of February 1 through July 31, 1990 are included. This would include students from cohorts 002 through 007.

Enrollment by Gender			
Male	35	51%	
Female	33	49%	
Total	68	100%	

Marital Status			
Single	17	25%	
Married	51	75%	
Total	68	100%	

Enrollment by Race			
Black Non-Hispan	14	21%	
Hispanic	4	6%	
Asian American	1	1%	
White Non-Hispan	49	72%	
Total	68	100%	

Denominational Preference			
Assembly of God	1	1%	
Baptist	3	4%	
C & MA	8	12%	
Evangelical Free	3	4%	
Jewish	6	9%	
Lutheran	1	1%	
Methodist(all)	3	4%	
Non-Denom/Protestant	5	7%	
Pentecostal	2	3%	
Roman Catholic	17	25%	
Salvation Army	6	9%	
Seventh Day Adventist	1	1%	
Southern Baptist	1	1%	
No Stated Preference	11	16%	
Total	68	100%	

Enrollment by Age			
Less than 25	1	1%	
25-29 yr	11	16%	
30-34 yr	14	21%	
35-39 yr	11	16%	
40-44 yr	19	28%	
45-49 yr	8	12%	
50-54 yr	1	1%	
55-59 yr	3	4%	
60+ yrs.	0	0%	
Total	68	100%	

Number of students	
Cohort 00	10
Cohort 00	14
Cohort 00	11
Cohort 00	10
Cohort 00	23
Total	68

ENROLLMENT BY STATE OF ORIGIN

Approximately 55% of our student population continues to be classified as residents of New York State. For the Fall of 1990, 54.7% of the students were from within the state, compared to 48.5% in the Fall of 1977. (an increase of 6.2%)

New Jersey and Pennsylvania contribute approximately 22% of our students. The number of students from New Jersey have been gradually increasing since 1977, and the number of students from Pennsylvania have been gradually decreasing. (NJ increased 4%, PA decreased 5.1% from 1977 to 1990) The state that is the next largest contributor is Ohio, which comprises 4 to 5% of the student body.

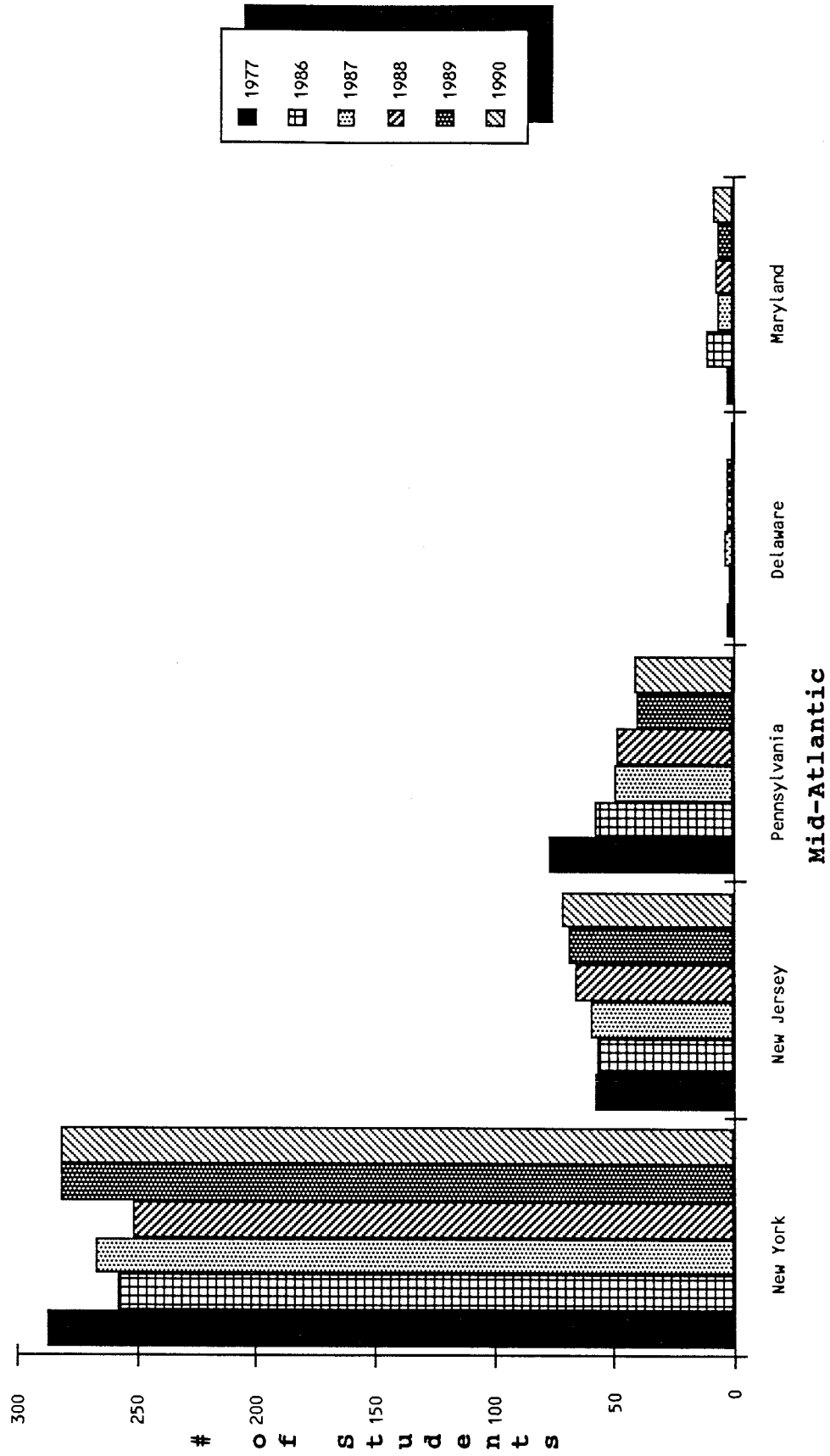
	77-78		86-87		87-88		88-89		89-90		90-91	
	#	%	#	%	#	%	#	%	#	%	#	%
	====	=====	====	=====	====	=====	====	=====	====	=====	====	=====
NEW YORK	287	48.5%	258	50.0%	267	52.3%	252	49.0%	282	52.2%	282	54.7%
OTHER MID-ATLANTIC												
New Jersey	58	9.8%	57	11.0%	59	11.5%	66	12.8%	69	12.8%	71	13.8%
Pennsylvania	77	13.0%	58	11.2%	49	9.6%	48	9.3%	40	7.4%	41	7.9%
Delaware	3	0.5%	2	0.4%	4	0.8%	3	0.6%	3	0.6%	1	0.2%
Maryland	3	0.5%	11	2.1%	6	1.2%	7	1.4%	6	1.1%	8	1.6%
NEW ENGLAND												
Maine	14	2.4%	6	1.2%	5	1.0%	5	1.0%	3	0.6%	4	0.8%
Vermont	5	0.8%	8	1.6%	12	2.3%	17	3.3%	20	3.7%	13	2.5%
New Hampshire	4	0.7%	7	1.4%	12	2.3%	12	2.3%	18	3.3%	16	3.1%
Massachusetts	25	4.2%	12	2.3%	8	1.6%	9	1.8%	9	1.7%	9	1.7%
Rhode Island	1	0.2%	3	0.6%	3	0.6%	3	0.6%	4	0.7%	4	0.8%
Connecticut	18	3.0%	10	1.9%	10	2.0%	11	2.1%	7	1.3%	8	1.6%
MID-WEST												
Ohio	39	6.6%	25	4.8%	28	5.5%	28	5.4%	29	5.4%	20	3.9%
Illinois	5	0.8%	1	0.2%	1	0.2%	1	0.2%	1	0.2%	2	0.4%
Indiana	3	0.5%	2	0.4%	1	0.2%	0	0.0%	2	0.4%	1	0.2%
Michigan	2	0.3%	4	0.8%	3	0.6%	1	0.2%	0	0.0%	0	0.0%
Minnesota	0	0.0%	0	0.0%	2	0.4%	1	0.2%	2	0.4%	3	0.6%
West Virginia	3	0.5%	4	0.8%	2	0.4%	1	0.2%	1	0.2%	0	0.0%
SOUTH												
Alabama	1	0.2%	1	0.2%	1	0.2%	1	0.2%	1	0.2%	1	0.2%
Florida	14	2.4%	10	1.9%	8	1.6%	15	2.9%	17	3.1%	10	1.9%
Georgia	0	0.0%	1	0.2%	1	0.2%	2	0.4%	5	0.9%	4	0.8%
Kentucky	1	0.2%	1	0.2%	1	0.2%	0	0.0%	0	0.0%	0	0.0%
North Carolina	8	1.4%	4	0.8%	5	1.0%	6	1.2%	4	0.7%	3	0.6%
South Carolina	0	0.0%	1	0.2%	0	0.0%	2	0.4%	1	0.2%	0	0.0%
Tennessee	0	0.0%	0	0.0%	1	0.2%	1	0.2%	0	0.0%	0	0.0%
Virginia	5	0.8%	6	1.2%	8	1.6%	6	1.2%	4	0.7%	5	1.0%
WEST												
California	2	0.3%	1	0.2%	2	0.4%	3	0.6%	3	0.6%	1	0.2%
Washington		0.0%	2	0.4%	2	0.4%	2	0.4%	1	0.2%	0	0.0%
Other	4	0.7%	1	0.2%	4	0.8%	10	1.9%	7	1.3%	5	1.0%
INTERNATIONAL	10	1.7%	20	3.9%	6	1.2%	1	0.2%	1	0.2%	4	0.8%
TOTAL	592		516		511		514		540		516	

Source: Registrar's Office

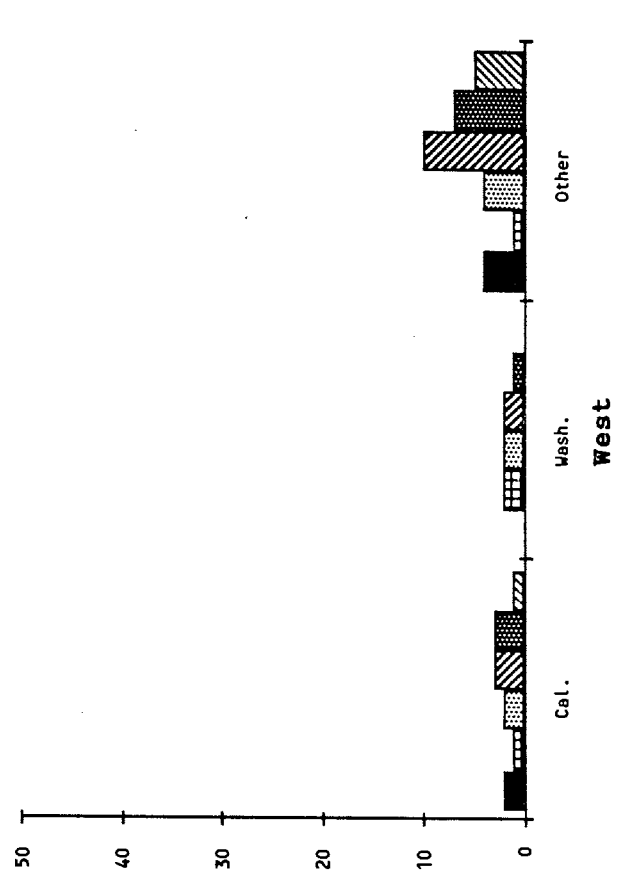
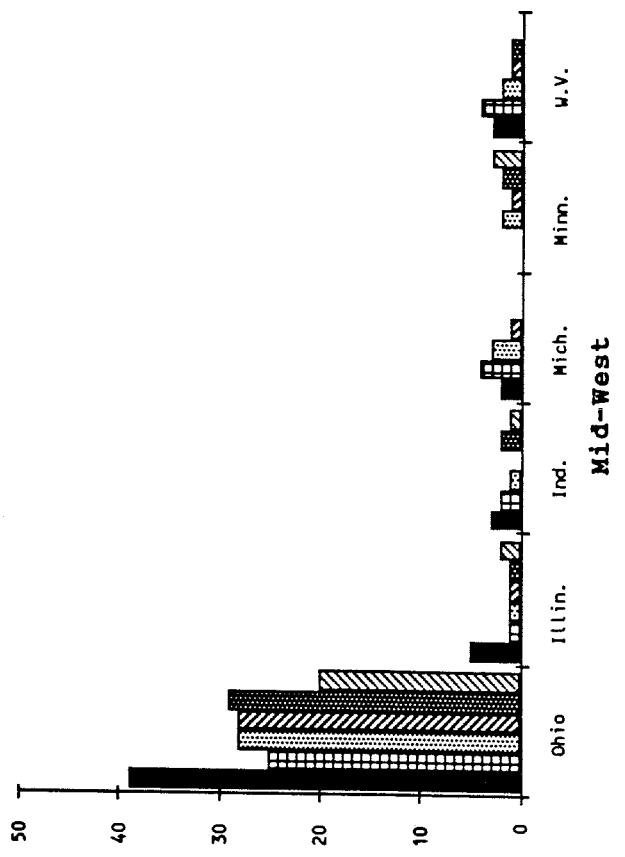
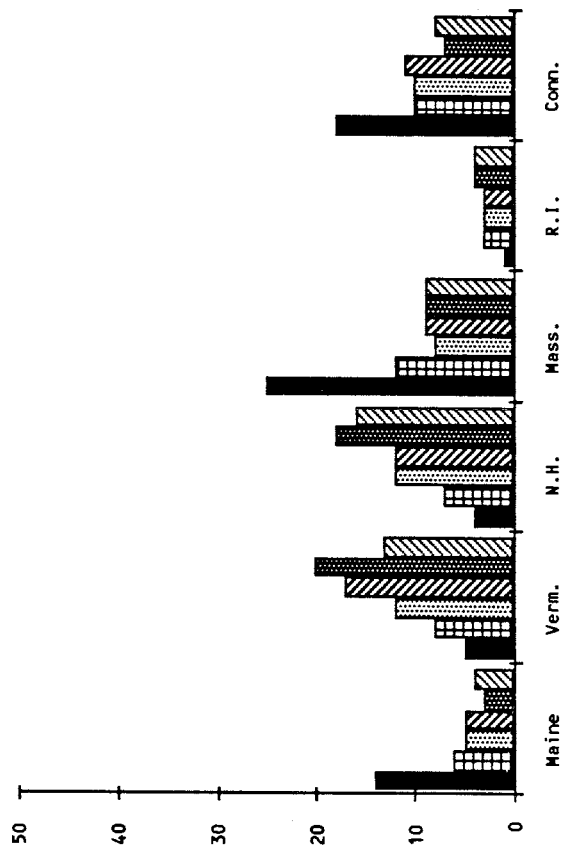
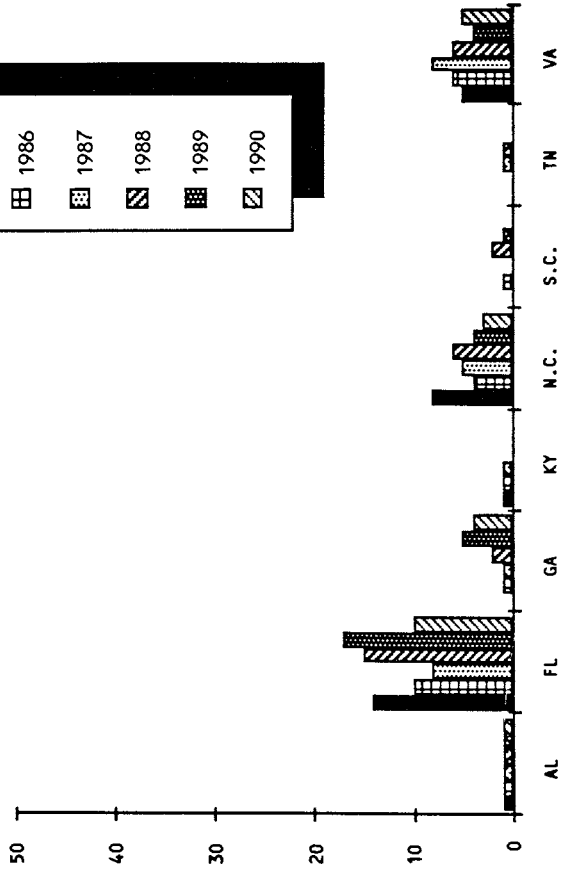
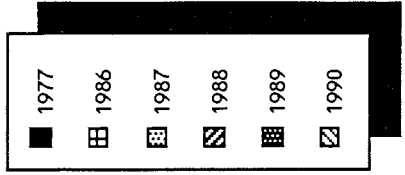
IR/ksd

7/91

ENROLLMENT BY STATE OF ORIGIN



ENROLLMENT BY STATE OF ORIGIN



of Students

ENROLLMENT BY NEW YORK COUNTY

An average of 27% of Nyack's students are from Rockland County. This percentage is based on the selected years shown below. Over the past five years the percentage of students from Rockland County has decreased 13.3%. Other counties that report the highest average percentages are Queens (10%), Brooklyn (8%), Bronx (7%), Westchester (5%), Suffolk (4%), and Manhattan (3%).

The percentages of students from the New York City Counties have shown the greatest increases during this same time period.

	85-86		86-87		87-88		88-89		89-90		90-91	
	#	%	#	%	#	%	#	%	#	%	#	%
Albany	0	0.0%			3	1.0%	4	1.7%	1	0.4%	0	
Allegany	3	1.3%			1	0.3%	2	0.8%	1	0.4%	1	0.0%
Broome	4	1.7%			5	1.7%	4	1.7%	5	2.0%	6	0.4%
Cattaraugus	0	0.0%			0	0.0%	0	0.0%	0	0.0%	0	2.3%
Cayuga	0	0.0%			2	0.7%	1	0.4%	1	0.4%	1	0.0%
Chautauqua	1	0.4%			1	0.3%	1	0.4%	1	0.4%	1	0.4%
Chemung	2	0.9%			1	0.3%	1	0.4%	1	0.4%	1	0.4%
Chenango	3	1.3%			4	1.4%	3	1.3%	4	1.6%	3	0.4%
Clinton	0	0.0%			0	0.0%	0	0.0%	0	0.0%	0	1.1%
Columbia	3	1.3%			4	1.4%	3	1.3%	2	0.8%	1	0.0%
Cortland	0	0.0%			0	0.0%	0	0.0%	2	0.8%	1	0.4%
Delaware	0	0.0%			2	0.7%	3	1.3%	3	1.2%	4	0.4%
Dutchess	4	1.7%			4	1.4%	5	2.1%	3	1.2%	9	1.5%
Erie	3	1.3%			4	1.4%	7	2.9%	10	4.1%	10	3.4%
Essex	0	0.0%			0	0.0%	1	0.4%	0	0.0%	0	3.8%
Franklin	0	0.0%			0	0.0%	0	0.0%	0	0.0%	0	0.0%
Fulton	1	0.4%			0	0.0%	1	0.4%	0	0.0%	4	0.0%
Genesee	1	0.4%			0	0.0%	0	0.0%	0	0.0%	0	1.5%
Greene	1	0.4%			1	0.3%	2	0.8%	0	0.0%	0	0.0%
Hamilton	1	0.4%			0	0.0%	0	0.0%	0	0.0%	0	0.0%
Herkimer	4	1.7%			7	2.4%	7	2.9%	6	2.4%	3	0.0%
Jefferson	2	0.9%			3	1.0%	1	0.4%	1	0.4%	1	1.1%
Lewis	0	0.0%			0	0.0%	0	0.0%	0	0.0%	0	0.4%
Livingston	0	0.0%			0	0.0%	0	0.0%	0	0.0%	0	0.0%
Madison	0	0.0%			0	0.0%	0	0.0%	0	0.0%	0	0.0%
Monroe	4	1.7%			3	1.0%	2	0.8%	1	0.4%	1	0.0%
Montgomery	1	0.4%			2	0.7%	2	0.8%	3	1.2%	4	0.4%
Nassau	3	1.3%			6	2.1%	8	3.3%	5	2.0%	3	1.5%
New York												1.1%
Manhattan	8	3.5%			8	2.8%	8	3.3%	4	1.6%	9	1.5%
Bronx	15	6.6%			21	7.3%	10	4.2%	15	6.1%	22	3.4%
Brooklyn	13	5.7%			20	7.0%	15	6.3%	17	6.9%	26	8.3%
Queens	12	5.2%			27	9.4%	15	6.3%	38	15.5%	41	9.8%
Richmond	4	1.7%			8	2.8%	6	2.5%	8	3.3%	5	15.4%
Niagara	1	0.4%			0	0.0%	0	0.0%	2	0.8%	4	1.9%
Oneida	4	1.7%			4	1.4%	5	2.1%	5	2.0%	6	1.5%
Onondaga	2	0.9%			8	2.8%	8	3.3%	8	3.3%	7	2.3%
Ontario	1	0.4%			0	0.0%	0	0.0%	0	0.0%	1	2.6%
Orange	9	3.9%			11	3.8%	5	2.1%	1	0.4%	3	0.4%
Orleans	0	0.0%			0	0.0%	0	0.0%	0	0.0%	0	1.1%
Oswego	3	1.3%			3	1.0%	5	2.1%	8	3.3%	8	0.0%
Otsego	1	0.4%			0	0.0%	0	0.0%	0	0.0%	0	3.0%
Putnam	0	0.0%			0	0.0%	1	0.4%	1	0.4%	0	0.0%

ENROLLMENT BY NEW YORK COUNTY

	85-86		86-87		87-88		88-89		89-90		90-91	
	#	%	#	%	#	%	#	%	#	%	#	%
=====	=====	=====	=====	=====	=====	=====	=====	=====	=====	=====	=====	=====
Rensselaer	1	0.4%			1	0.3%	1	0.4%	1	0.4%	2	=====
Rockland	70	30.6%			94	32.8%	70	29.3%	61	24.9%	46	0.8%
St. Lawrence	5	2.2%			0	0.0%	0	0.0%	0	0.0%	0	17.3%
Saratoga	1	0.4%			2	0.7%	2	0.8%	1	0.4%	1	0.0%
Schenectady	0	0.0%			2	0.7%	2	0.8%	2	0.8%	3	0.4%
Schoharie	1	0.4%			0	0.0%	0	0.0%	0	0.0%	0	1.1%
Schuyler	0	0.0%			1	0.3%	0	0.0%	0	0.0%	0	0.0%
Seneca	0	0.0%			0	0.0%	0	0.0%	0	0.0%	0	0.0%
Steuben	1	0.4%			1	0.3%	0	0.0%	1	0.4%	1	0.0%
Suffolk	10	4.4%			7	2.4%	9	3.8%	10	4.1%	8	0.4%
Sullivan	2	0.9%			2	0.7%	1	0.4%	1	0.4%	1	3.0%
Tioga	3	1.3%			0	0.0%	0	0.0%	0	0.0%	0	0.4%
Tompkins	2	0.9%			2	0.7%	1	0.4%	1	0.4%	2	0.0%
Ulster	2	0.9%			1	0.3%	3	1.3%	2	0.8%	3	0.8%
Warren	4	1.7%			2	0.7%	1	0.4%	0	0.0%	0	1.1%
Washington	0	0.0%			0	0.0%	0	0.0%	0	0.0%	1	0.0%
Wayne	0	0.0%			1	0.3%	1	0.4%	0	0.0%	0	0.4%
Westchester	13	5.7%			8	2.8%	12	5.0%	8	3.3%	12	0.0%
Wyoming	0	0.0%			0	0.0%	0	0.0%	0	0.0%	0	4.5%
Yates	0	0.0%			0	0.0%	0	0.0%	0	0.0%	0	0.0%
	=====				=====		=====		=====		=====	0.0%
TOTALS	229				287		239		245		266	

Note: Data from 1986-87 was not available

Source: Registrar's Office

IR/ksd

7/91

ENROLLMENT BY DENOMINATIONAL AFFILIATION

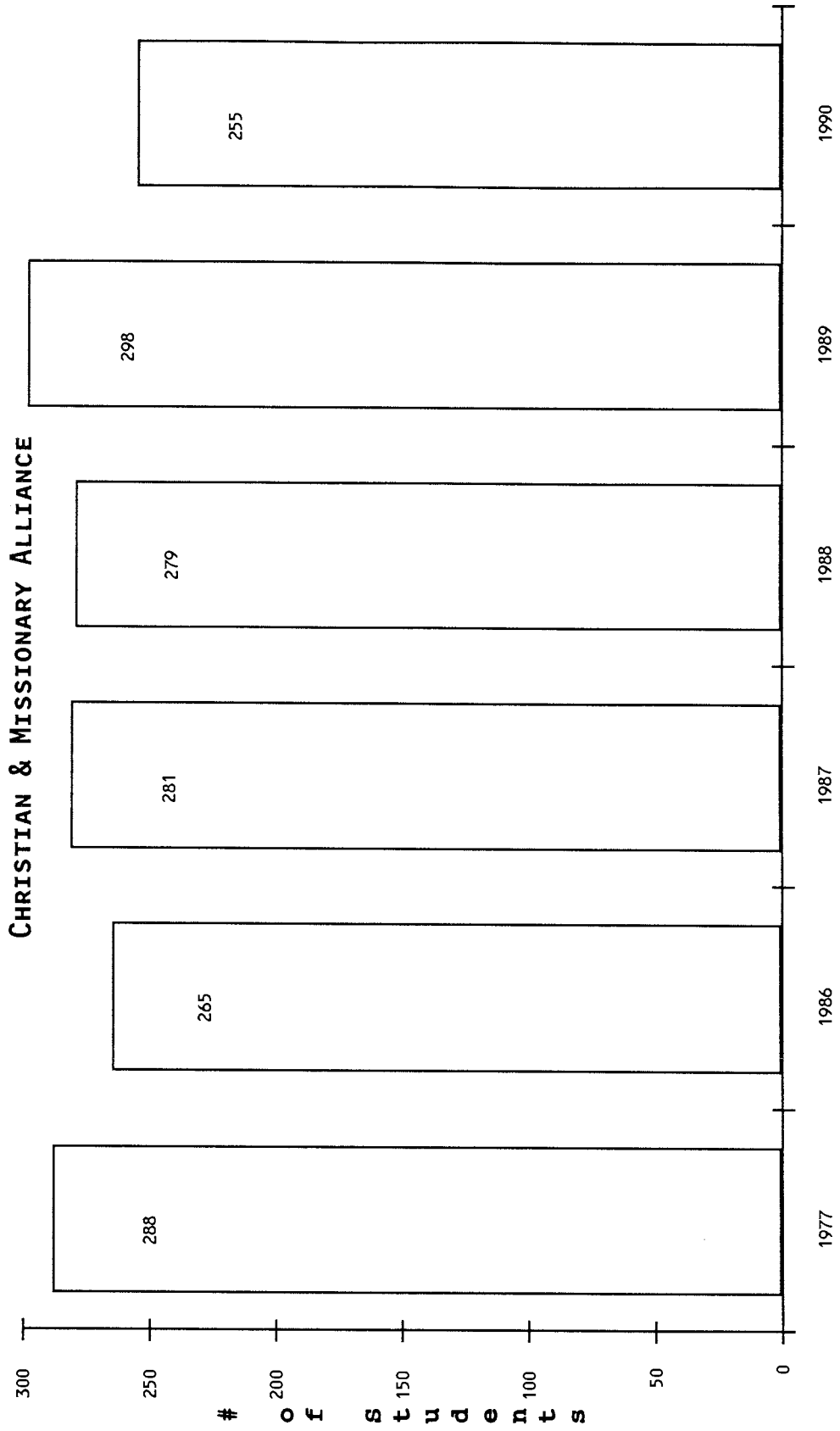
	77 - 7		86 - 8		87 - 8		88 - 8		88 - 8		90 - 91	
	#	%	#	%	#	%	#	%	#	%	#	%
=====	=====	=====	=====	=====	=====	=====	=====	=====	=====	=====	=====	=====
C & M A	288	48.0%	265	51.3%	281	55.1%	279	54.3%	298	55.2%	255	49.4%
Assemblies of God	15	2.5%	11	2.1%	14	2.7%	17	3.3%	22	4.1%	22	4.3%
Baptist	61	10.2%	59	11.4%	46	9.0%	47	9.1%	54	10.0%	55	10.7%
Bible Fellowship	0	0.0%	3	0.6%	3	0.6%	2	0.4%	0	0.0%	1	0.2%
Brethren	4	0.7%	2	0.4%	1	0.2%	0	0.0%	0	0.0%	0	0.0%
Christian Church	1	0.2%	2	0.4%	1	0.2%	1	0.2%	2	0.4%	1	0.2%
Christian Reformed	2	0.3%	4	0.8%	2	0.4%	4	0.8%	1	0.2%	2	0.4%
Church of God	1	0.2%	2	0.4%	2	0.4%	2	0.4%	1	0.2%	2	0.4%
Congregational	5	0.8%	3	0.6%	4	0.8%	2	0.4%	2	0.4%	2	0.4%
Conservative Baptist	5	0.8%	7	1.4%	4	0.8%	2	0.4%	3	0.6%	3	0.6%
Episcopal	1	0.2%	1	0.2%	2	0.4%	1	0.2%	0	0.0%	0	0.0%
Evangelical	7	1.2%	0	0.0%	0	0.0%	0	0.0%	0	0.0%	0	0.0%
Evangelical Free	15	2.5%	16	3.1%	15	2.9%	13	2.5%	20	3.7%	11	2.1%
Free Methodist	0	0.0%	2	0.4%	1	0.2%	0	0.0%	0	0.0%	0	0.0%
Friends	0	0.0%	0	0.0%	1	0.2%	1	0.2%	1	0.2%	0	0.0%
Full Gospel	2	0.3%	1	0.2%	1	0.2%	1	0.2%	0	0.0%	0	0.0%
Holiness	1	0.2%	0	0.0%	1	0.2%	1	0.2%	1	0.2%	1	0.2%
Independent	15	2.5%	7	1.4%	6	1.2%	8	1.6%	13	2.4%	8	1.6%
Independent Baptist	0	0.0%	2	0.4%	2	0.4%	0	0.0%	0	0.0%	1	0.2%
Inter-Denominational	1	0.2%	0	0.0%	0	0.0%	1	0.2%	2	0.4%	2	0.4%
Lutheran	3	0.5%	2	0.4%	2	0.4%	2	0.4%	2	0.4%	2	0.4%
Methodist	12	2.0%	12	2.3%	6	1.2%	5	1.0%	5	0.9%	7	1.4%
Nazarene	6	1.0%	2	0.4%	2	0.4%	2	0.4%	1	0.2%	1	0.2%
New Testament	0	0.0%	1	0.2%	1	0.2%	1	0.2%	1	0.2%	0	0.0%
Non-Denominational	94	15.7%	43	8.3%	51	10.0%	45	8.8%	40	7.4%	60	11.6%
Orthodox	0	0.0%	0	0.0%	1	0.2%	0	0.0%	0	0.0%	0	0.0%
Pentecostal	13	2.2%	13	2.5%	15	2.9%	19	3.7%	19	3.5%	25	4.8%
Presbyterian	24	4.0%	14	2.7%	16	3.1%	16	3.1%	27	5.0%	26	5.0%
Protestant	2	0.3%	0	0.0%	0	0.0%	3	0.6%	3	0.6%	3	0.6%
Reformed Church	4	0.7%	3	0.6%	2	0.4%	1	0.2%	0	0.0%	2	0.4%
Roman Catholic	0	0.0%	4	0.8%	1	0.2%	1	0.2%	0	0.0%	0	0.0%
Salvation Army	0	0.0%	1	0.2%	5	1.0%	3	0.6%	5	0.9%	9	1.7%
Southern Baptist	1	0.2%	1	0.2%	0	0.0%	1	0.2%	2	0.4%	1	0.2%
United Missionary	0	0.0%	0	0.0%	1	0.2%	1	0.2%	0	0.0%	1	0.2%
United Methodist	9	1.5%	0	0.0%	5	1.0%	5	1.0%	3	0.6%	3	0.6%
United Presbyterian	2	0.3%	0	0.0%	1	0.2%	1	0.2%	0	0.0%	0	0.0%
Wesleyan	0	0.0%	2	0.4%	1	0.2%	1	0.2%	3	0.6%	3	0.6%
Undesignated	0	0.0%	29	5.6%	13	2.5%	24	4.7%	8	1.5%	4	0.8%
Other	6	1.0%	3	0.6%	0	0.0%	1	0.2%	1	0.2%	3	0.6%
TOTAL	600		517		510		514		540		516	

Source: Registrar's Office

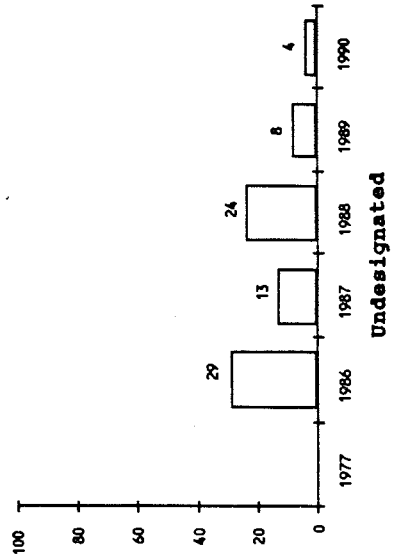
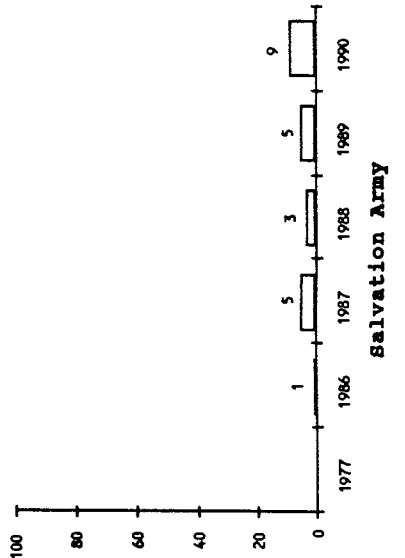
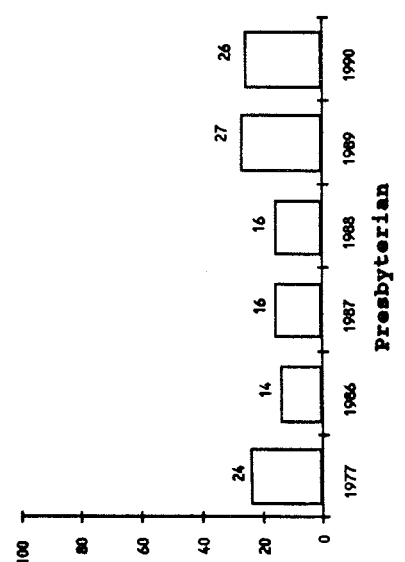
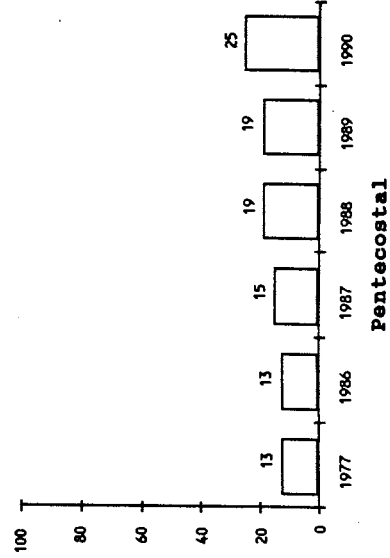
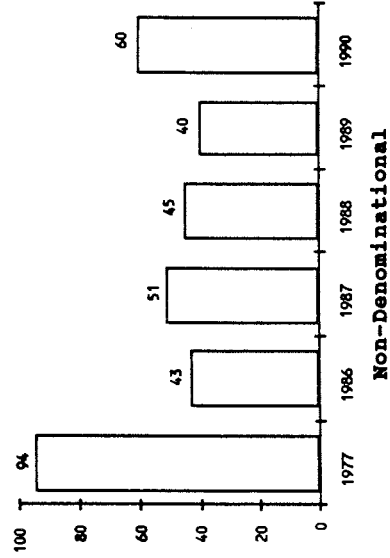
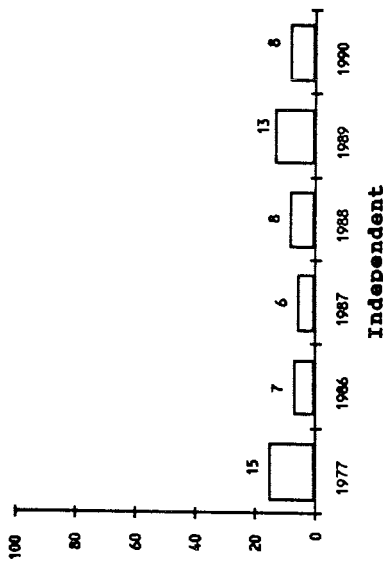
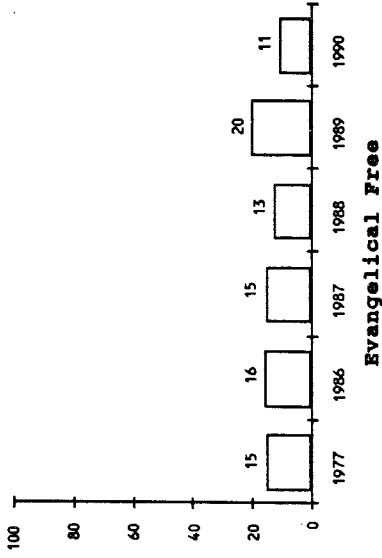
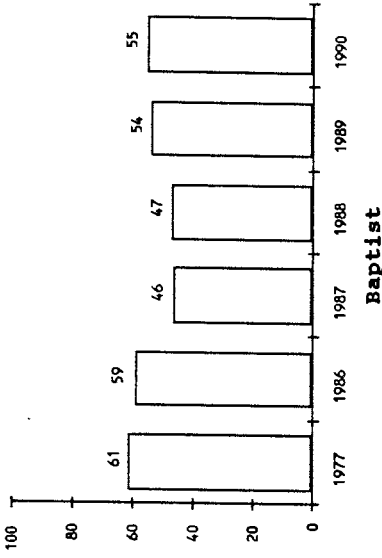
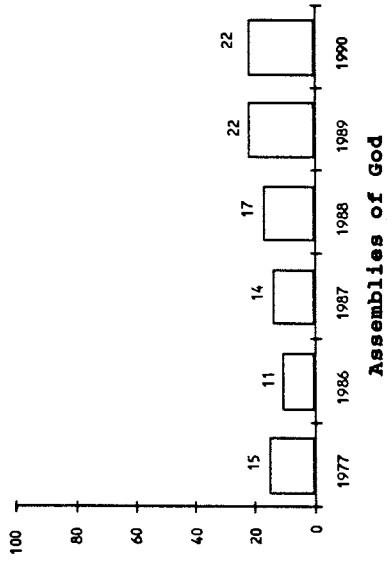
IR/ksd

7/91

ENROLLMENT BY DENOMINATIONAL AFFILIATION



ENROLLMENT BY DENOMINATIONAL AFFILIATION



#

o f s t u d e n t s

ENROLLMENT BY RACE AND GENDER

The student body of Nyack College is composed of approximately 70% white students and 30% minority students. The percentage of white students has decreased 12.2% over the past five years (81.8% in 1986 to 69.6% in 1990) while the percentage of minorities has increased 12.2% (18.2% in 1986 to 30.4% in 1990). The largest increase has been among Asian students, an increase of 8.5%. Hispanic students have increased 2.9% and Black students have increased approximately 1% since 1986.

The college population generally consists of more females than males. The averages for the past five years are 55% female and 45% male.

Enrollment by Race										
RACE	86-87		87-88		88-89		89-90		90-91	
	#	%	#	%	#	%	#	%	#	%
Black Non-Hispanic	40	8.2%	32	6.3%	31	6.1%	32	5.9%	49	9.0%
Hispanic	20	4.1%	17	3.3%	20	3.9%	35	6.5%	38	7.0%
Asian American	29	5.9%	37	7.2%	45	8.8%	69	12.8%	78	14.4%
White Non-Hispanic	401	81.8%	420	82.2%	416	81.3%	404	74.8%	378	69.6%
Non-Resident Alien	0	0.0%	5	1.0%	0	0.0%	0	0.0%	0	0.0%
TOTAL	<u>490</u>		<u>511</u>		<u>512</u>		<u>540</u>		<u>543</u>	

Source: Registrar's Office
IR/kf
17/91

Enrollment by Gender										
	86-87		87-88		88-89		89-90		90-91	
	#	%	#	%	#	%	#	%	#	%
Male	239	51%	244	47%	212	41%	240	44%	211	41%
Female	230	49%	275	53%	303	59%	300	56%	305	59%
Total	<u>469</u>		<u>519</u>		<u>515</u>		<u>540</u>		<u>516</u>	

Source: Registrar's Office
IR/ksd
17/91

ENROLLMENT BY MARITAL STATUS

MARITAL STATUS	77-78		86-87		87-88		88-89		88-89		88-89	
	M	F	M	F	M	F	M	F	M	F	M	F
Married-Campus Housing	18	3	20	2	20	2	13	9	12	15	16	12
Married-Commuter	32	13	19	23	21	17	11	13	26	9	14	9
Total	50	16	39	25	41	19	24	22	38	24	30	21
Total Married	66		64		60		46		62		51	
Single Resident	*	*	147	219	156	227	156	264	158	257	136	247
Single-Commuter	*	*	25	35	29	39	14	16	40	23	44	38
Total	*	*	172	254	185	266	170	280	198	280	180	285
Total Single	*		426		451		450		478		465	
Total Married and Single	66		490		511		496		540		516	

Source: Registrar's Office &
Dean of Student's Office
IR/kf

* Data not available

Jul-91

ENR-MAR.WK1

ENROLLMENT BY AGE

AGE DISTRIBUTION	86-87			87-88			88-89			89-90			90-91		
	M	F	%	M	F	%	M	F	%	M	F	%	M	F	%
15-19	48	113	34%	61	127	36%	29	63	18%	64	123	35%	46	116	30%
20-24	114	65	38%	118	119	46%	133	199	64%	119	146	49%	122	163	52%
25-29	34	22	12%	34	20	10%	24	22	9%	24	14	7%	24	18	8%
30-34	25	7	7%	18	5	4%	14	6	4%	13	2	3%	18	7	5%
35+	18	23	9%	13	4	3%	12	13	5%	20	15	6%	19	10	5%
	239	230		244	275		212	303		240	300		229	314	
	469			519			515			540			543		

NOTE: Percentages include the total of male and female in each age group.

Source: Registrar's Office
IR/kf
Aug 91

ENR-AGE

ANNUAL SUMMARY OF VOCATIONAL AND EDUCATIONAL PREFERENCE

Approximately 46% of Nyack's students intend to pursue a church related vocation. This figure is based on the average over the last five years. There has been a trend indicating that higher percentages of student are intending non-church related vocations. Over the past three years there have been smaller percentages of students intending church related vocations (see graph on next page).

CHURCH RELATED VOCATIONS	1979		1987		1988		1989		1990		1991	
	#	%	#	%	#	%	#	%	#	%	#	%
Missionary	132	16%	73	19%	71	16%	51	14%	33	10%	15	8%
Pastor	101	12%	53	14%	67	15%	34	9%	34	10%	8	4%
Church Youth Worker	58	7%	20	5%	22	5%	30	8%	18	5%	7	4%
Music /Minister of Music	56	7%	26	7%	25	6%	13	4%	11	3%	2	1%
Missionary Teacher	40	5%	14	4%	15	3%	18	5%	10	3%	9	5%
Teacher (Christian School	59	7%	27	7%	30	7%	27	7%	23	7%	7	4%
Director of Christian Ed	23	3%	5	1%	10	2%	2	1%	1	0%	2	1%
Other	32	4%	4	1%	14	3%	4	1%	0	0%	5	3%
	==	==	==	==	==	==	==	==	==	==	==	==
Total	501	61%	222	58%	254	57%	179	48%	130	39%	55	30%

NON-CHURCH RELATED VOCATIONS

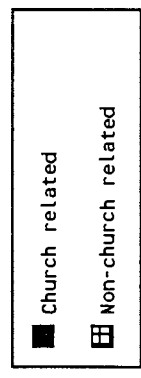
Psychological Counselor	61	7%	25	7%	36	8%	27	7%	35	10%	25	14%
Business Person	20	2%	31	8%	30	7%	37	10%	26	8%	14	8%
Social Worker	54	7%	24	6%	26	6%	27	7%	21	6%	7	4%
Public Elementary Teacher	65	8%	41	11%	47	11%	50	13%	60	18%	38	21%
Public Secondary Teacher	30	4%	10	3%	15	3%	15	4%	19	6%	17	9%
College Professor	30	4%	10	3%	10	2%	6	2%	15	4%	9	5%
Nurse	12	1%	3	1%	5	1%	2	1%	3	1%	3	2%
Lawyer	3	0%	3	1%	4	1%	4	1%	2	1%	2	1%
Other	51	6%	13	3%	15	3%	24	6%	26	8%	10	6%
	==	==	==	==	==	==	==	==	==	==	==	==
Total	326	39%	160	42%	188	43%	192	52%	207	61%	125	69%

Source: Academic Office

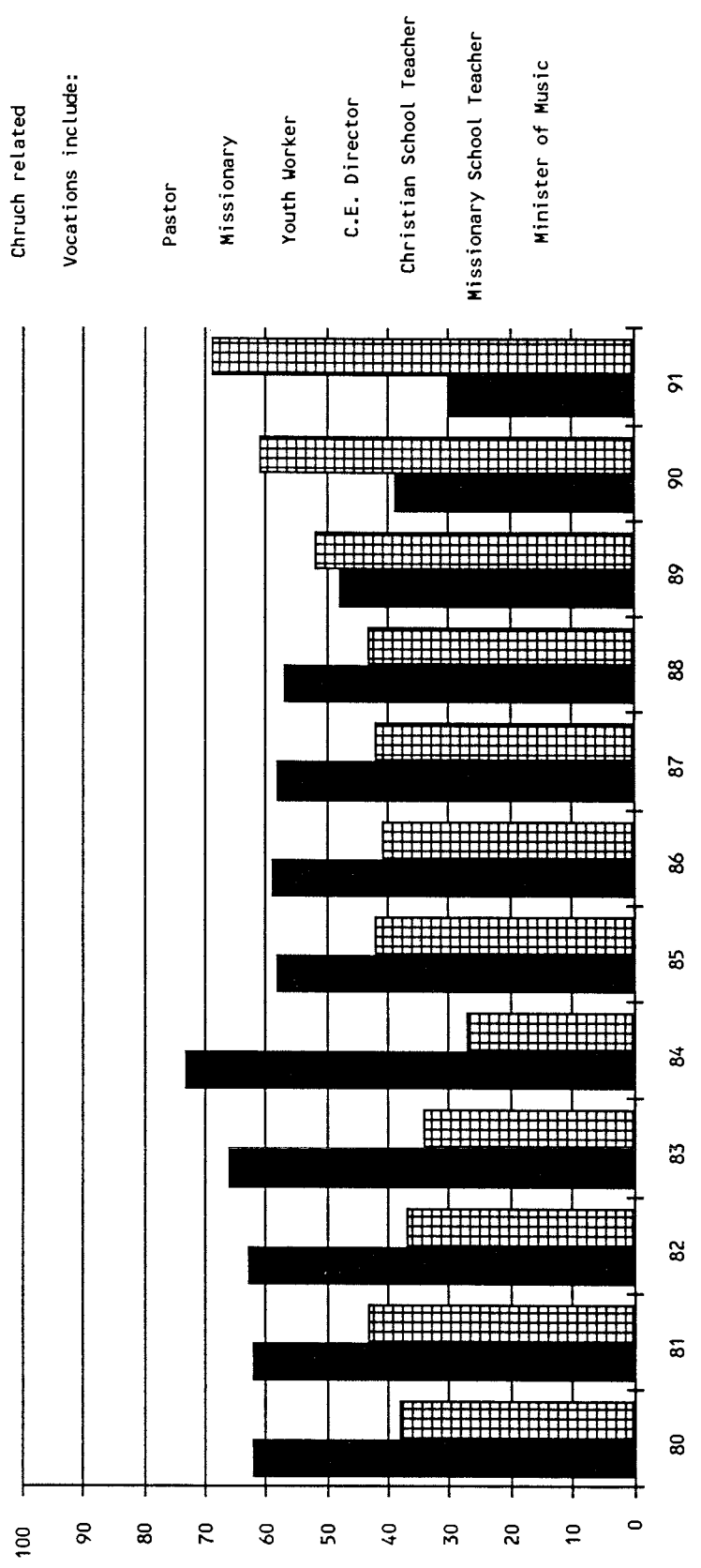
IR/ksf

Jul-91

VOCATIONAL INTENTIONS



PERCENT OF STUDENTS



Church related

Vocations include:

- Pastor
- Missionary
- Youth Worker
- C.E. Director
- Christian School Teacher
- Missionary School Teacher
- Minister of Music

YEARS

Data based on spring survey of Nyack Students

FRESHMAN PROFILE AVERAGE SAT SCORES

	77-78	86-87	87-88	88-89	89-90	90-91
SAT SCORE						
Verbal	*	427	421	431	451	443
Math	*	435	450	464	449	465
Total	911	862	871	895	900	908

*Data unavailable

Source: Admissions Office

IR/kf

Jul-91

SAT.WK1

NATIONAL TEACHERS EXAMINATION

The National Teacher's Exam has been administered to graduating senior Elementary Education majors and Music Education majors seeking certification in New York State since 1983.

The results of Nyack Students who have taken the exam have been averaged together and are reported for each year. The scores for the past six years have remained relatively stable.

	*PASSING SCORES	83-84	84-85	85-86	86-87	87-88	88-89	89-90	90-91
COMMUNICATION SKILLS	650	662 (+12)	665 (+15)	671 (+21)	663 (+13)	665 (+15)	664 (+14)	**	662 (+12)
GENERAL KNOWLEDGE	648	654 (+6)	658 (+10)	667 (+19)	659 (+11)	660 (+12)	659 (+11)	**	656 (+8)
PROFESSIONAL KNOWLEDGE	646	661 (+15)	657 (+11)	664 (+18)	659 (+13)	655 (+9)	658 (+12)	**	657 (+11)

*Established by New York Stat

(The number in the parentheses indicates the differ from the passing score)

**Data unavailable

Source: Education Department

IR/kf

Jul-91

NTE-EXAM

MAJOR FIELD ACHIEVEMENT TEST RESULTS

		OVERALL MEASURES	NORMATIVE MEAN	NYACK COLLEGE MEAN	DIFFERENCE BETWEEN MEANS
=====	=====	=====	=====	=====	=====
	OVERALL MEASURES	Total Score	156.4	154.9	-1.5
	-----	-----	-----	-----	-----
BUSINESS	ASSESSMENT INDICATORS	1. Accounting	45.5	41.3	-4.2
		2. Economics	43.2	40.1	-3.1
		3. Management	56.8	57.9	1.1
		4. Quantitative Business Analysis	50.9	49.7	-1.2
		5. Finance	47.4	47.3	-0.1
		6. Marketing	63.3	70.4	7.1
=====	=====	=====	=====	=====	=====
	OVERALL MEASURES	Total Score	159.1	156	-3.1
	-----	-----	-----	-----	-----
EDUCATION	ASSESSMENT INDICATORS	1. Educational Goals	47.6	45.4	-2.2
		2. Admin & Supervision o Schools	54	47.9	-6.1
		3. Curriculum Developmen and Organization	54.2	50.2	-4
		4. Teaching-Learning	51.9	51.6	-0.3
		5. Evaluation and Research Appraisal	53.2	46.2	-7
=====	=====	=====	=====	=====	=====
	OVERALL MEASURES	Total Score	151.1	*157.5	+6.4
HISTORY		Subscore 1: European History	51	*58.0	+7
		Subscore 2: United States History	51.1	*56.0	+4.9
=====	=====	=====	=====	=====	=====
	OVERALL MEASURES	Total Score	157.5	157	-0.5
	-----	-----	-----	-----	-----
LITERATURE IN ENGLISH	ASSESSMENT INDICATORS	1. English Literature to 1660	54.7	58.2	3.5
		2. English Literature 1660-1914	46.8	50	3.2
		3. English Literature since 1914	43.3	38	-5.3
		4. American Literature	56.2	50.5	-5.7
=====	=====	=====	=====	=====	=====
	OVERALL MEASURES	Total Score	150.1	147	-3.1
MUSIC		Subscore 1: Theory	50.1	45	-5.1
		Subscore 2: History and Literature	50	48	-2
	-----	-----	-----	-----	-----
	ASSESSMENT INDICATORS	1. Fundamentals	49.9	42.2	-7.7
		2. Specialties	38.7	35	-3.7
=====	=====	=====	=====	=====	=====

MAJOR FIELD ACHIEVEMENT TEST RESULTS

page 2

	OVERALL MEASURES	NORMATIVE MEAN	NYACK COLLEGE MEAN	DIFFERENCE BETWEEN MEANS	
=====	=====	=====	=====	=====	
	OVERALL MEASURES	Total Score	157.4	154.7	-2.7
		Subscore 1: Experimental	57.5	52.6	-4.9
		Subscore 2: Social	57.5	57.2	-0.3
	-----	-----	-----	-----	
	ASSESSMENT INDICATORS	1. Learning Cognition and Perception	50.1	44.2	-5.9
PSYCHOLOGY		2. Ethology and Comp- arative Psychology	40.3	40.2	-0.1
		3. Sensory and physio- logical	49.8	43.5	-6.3
		4. Developmental	51	51.9	0.9
		5. Clinical, Abnormal and Personality	57.9	54.6	-3.3
		6. Social	53.5	55.6	2.1
		7. Measurement and Methodology	48.6	43.4	-5.2
=====	=====	=====	=====	=====	
	OVERALL MEASURES	Total Score	151.6	144.5	-7.1
	-----	-----	-----	-----	
	ASSESSMENT INDICATORS	1. Methodology and Statistics	41.8	32.5	-9.3
		2. General Theory	39.1	33.5	-5.6
		3. Demography & Urban/ Rural Sociology	41.3	34.7	-6.6
SOCIOLOGY**		4. Social Psychology	41.9	36.3	-5.6
		5. Social Stratifica- tion	49	45.8	-3.2
		6. Race and Ethnic Relations	35.7	37.5	1.8
		7. Deviance and Social Control	62.9	56.8	-6.1
		8. Social Inst/Complex Orgs/Soc Change	52.1	38.5	-13.6
=====	=====	=====	=====	=====	

*Data for History is based a sample of < 5

**It should be noted that Nyack College offers a Social Science Major rather than a Sociology Major.

RETENTION RATES FOR FALL ENROLLMENT OF FRESHMEN & TRANSFERS

Generally retention rates are considerably higher for first time freshmen students than for transfer students for their second year at Nyack. The overall retention rate for the 1989 cohort was 61.6%, which was a decrease of 10.3 percent from the previous year. The Freshmen retention rate was 65.3% and the transfer student retention rate was 54.2% for the 1989 cohort.

Year	Orig #	2nd Yr #	%	3rd Yr #	%	4th Yr #	%	5th Yr #	%
1979	220	140	63.6%	104	47.3%	99	45.0%	99	45.0%
1980	185	119	64.3%	100	54.1%	91	49.2%	83	44.9%
1981	172	116	67.4%	90	52.3%	79	45.9%	77	44.8%
1982	157	118	75.2%	91	58.0%	83	52.9%	82	52.2%
1983	200	131	65.5%	96	48.0%	82	41.0%	76	38.0%
1984	192	116	60.4%	91	47.4%	87	45.3%	84	43.8%
1985	162	102	63.0%	83	51.2%	69	42.6%	71	43.8%
1986	176	111	63.1%	86	48.9%	80	45.5%	80	45.5%
1987	190	123	64.7%	102	53.7%	93	48.9%		
1988	196	141	71.9%	109	55.6%				
1989	177	109	61.6%						
1990	158								

The first column represents matriculated students enrolled for the first time at Nyack College. The succeeding columns represent the number and percent of students from the original group who have graduated or are returning for the fall term of the next year. Extension students and Adult Degree Program Students are not included.

Source: Registrar's Office
IR/kf
Nov-90

RETENTION RATES

FALL ENROLLMENT OF FRESHMEN

Year	Orig #	2nd Yr #	%	3rd Yr #	%	4th Yr #	%	5th Yr #	%
1979	160	106	66.3%	79	49.4%	75	46.9%	74	46.3%
1980	127	89	70.1%	75	59.1%	68	53.5%	58	45.7%
1981	126	85	67.5%	65	51.6%	55	43.7%	53	42.1%
1982	103	78	75.7%	59	57.3%	56	54.4%	55	53.4%
1983	145	97	66.9%	68	46.9%	57	39.3%	55	37.9%
1984	141	87	61.7%	67	47.5%	63	44.7%	61	43.3%
1985	113	73	64.6%	57	50.4%	44	38.9%	48	42.5%
1986	123	88	71.5%	69	56.1%	63	51.2%	63	51.2%
1987	131	97	74.0%	77	58.8%	69	52.7%		
1988	136	104	76.5%	74	54.4%				
1989	118	77	65.3%						
1990	101								

The first column represents matriculated students enrolled for the first time at Nyack College. The succeeding columns represent the number and percent of students from the original group who have graduated or are returning for the fall term of the next year. Extension students and Adult Degree Program students are not included.

Source: Registrar's Office
 IR/kf
 Nov-90

RETENTION RATES

FALL ENROLLMENT OF TRANSFERS

Year	Orig		2nd Yr		3rd Yr		4th Yr		5th Yr	
	#	%	#	%	#	%	#	%	#	%
1979	60		34	56.7%	25	41.7%	24	40.0%	25	41.7%
1980	58		30	51.7%	25	43.1%	23	39.7%	25	43.1%
1981	46		31	67.4%	25	54.3%	24	52.2%	24	52.2%
1982	54		40	74.1%	32	59.3%	27	50.0%	27	50.0%
1983	55		34	61.8%	28	50.9%	25	45.5%	21	38.2%
1984	51		29	56.9%	24	47.1%	24	47.1%	23	45.1%
1985	49		29	59.2%	26	53.1%	25	51.0%	23	46.9%
1986	53		23	43.4%	17	32.1%	17	32.1%	17	32.1%
1987	59		26	44.1%	25	42.4%	24	40.7%		
1988	63		37	58.7%	35	55.6%				
1989	59		32	54.2%						
1990	101									

The first column represents matriculated students enrolled for the first time at Nyack College. The succeeding columns represent the number and percent of students from the original group who have graduated or are returning for the fall term of the next year. Extension students and Adult Degree Program students are not included.

Source: Registrar's Office
 IR/kf
 Nov-90

STUDENT ORGANIZATIONS 1990-91

CLASS OFFICERS

FRESHMEN CLASS

President: Wanda Vega
 VP: Heidi Stentz
 Secretary: Teodora Nieves
 Treasurer: Beth Schlitzer
 Food Service: Eric Bradford
 Kim Tamsett
 Student Union: Pam Schmidt
 Student Services: Becky Wood
 Academic Affairs: Alvin Carter
 Christian Serv: Bryan Pringle
 Advisor: Christine Buel

SOPHOMORE CLASS

President: Dwayne Bertram
 VP: Melissa Dettmer
 Secretary: Andrea Griffiths
 Treasurer: Todd Hall
 Food Service:
 Student Union:
 Student Services:
 Academic Affairs: Jason Boyers
 Christian Serv: David Perez
 Judiciary Board: Kurt Glancy
 Advisor: Mark Conklin

JUNIOR CLASS

President: Mark Lynch
 VP: Beth Long
 Secretary: Joy Harshman
 Treasurer: Marlene Deasy
 Food Service: Beth Foland
 Student Union: Kelly Molway
 Student Services: Josephine Velez
 Academic Affairs: Jen Autin
 Christian Serv: Mike Tyler
 Judiciary Board: Dan Cornell
 Marcia Temple
 Advisor: John McArthur

SENIOR CLASS

President: Tom Hickman
 VP: Amy Qualters
 Secretary: Kristine Kroll
 Treasurer: Stephen Marth
 Food Service: Melanie Nadeau
 Student Union: Jen Russell
 Academic Affairs: Melissa Day
 Christian Serv: Mayble Adukkalil
 Judiciary Board: Sarah Snow
 Ray Kochis
 Advisor: Willie Matos

GOSPEL TEAMS

BRONX GOSPEL TEAM

President: David Perez
 VP: Heather Beers
 Secretary: Cindy Gonzalez
 Treasurer: Paul Alvarez
 Bible Clubs/Street Ministries:
 Jessie Rivera

BROOKLYN GOSPEL TEAM

President: Mike Dowd
 VP: Jeff Drake
 Secretary: Katrina Jacobson
 Treasurer: TBA

MAHATTAN GOSPEL TEAM

President: Johnette Benjamin
 VP: John Lauber
 Secretary: Keren Knapp
 Treasurer: Alex Biddles
 Tour Director: Pam Simpson
 Bible Clubs: Steve Pullin
 Members at Large: Erica Goldberg
 Richard Polinski
 Advisor: Kevin Phillips

NYACK GOSPEL TEAM

President: Russell Albert
 VP: David Reese
 Secretary: Karen Poynor
 Treasurer: TBA

QUEEN'S GOSPEL TEAM

President: Idilio Rivera
 VP: Sherry Lyman
 Members at Large:
 Brent Wilson, Ruthie Westmeir
 David Westmeir, Barb Schimidt
 Mike Tyler

SAINT AGATHA'S GOSPEL TEAM

President: Jennifer Austin
 VP: Milissa Benn
 Secretary: Heidi Kesler
 VP: Milissa benn
 Treasurer: Deb Reilly

STUDENTS INVOLVED IN SUMMER OVERSEAS MINISTRIES

Peter Brokopp	Gabon	Soeuth Loa	Thailand	Jen Rowse	Dominican Republic
Eric Champignon	Thailand	Mark Lynch	Burkina Faso	Eric Schmidt	Gabon
Melissa Dettmer	Spain	Deb Miller	Gabon	Kathy Scott	Brazil
Julie Joo	Indonesia	Lisa Miller	Columbia	Lisa Sheets	Mexico
Keren Knapp	Ecuador	Joe Noga	Philippines	Ruth Strubbe	Burkina Faso
John Lauber	Colombia	Cami Petterson	Gabon	Kevin Zwart	Gabon
Christie Lithgow	Malaysia	Gina Richert	Hong Kong		

CULTURAL ORGANIZATIONS

AFRO-AMERICAN CULTURAL EXCHANGE CLUB

President: Gladys Byrd
 VP: William McField
 Secretary: Sherry Lyman
 Treasurer: Carmella Gohagan
 Advisor: Jim Norfleet
 His Voice Choir: Eric Bradford

INTERNATIONAL STUDENTS FELLOWSHIP

No information given

ORGANIZATIONS IN THE AREA OF PERFORMING ARTS

CHORALE

President: Margaret Sills
VP: Steve Pullin
Secretary: Andrea Griffiths
Treasurer: Heather Beers
Librarian: Jason Boyers
Social Chairperson: Jonathon Ford

LADIES GLEE CLUB

President: Keren Knapp
VP: Wendy Cowen
Sec/Treasurer: Brenda Spaulding
Advisor: Marion Howe

DRAMA ENSEMBLE

Assistan Producers: Liz Sears
Kevin Pickhan
Assistant Director: Michele Finnick
Vocal Director: Pam Simpson
Business Manager: Paul Alvarez
Asst. Business Manager:
Josephine Velez
Accompanist: Marcia Temple
Set Construction Director: R. Jeff Nason
Sales Manager: Melissa Benn
Advisor: David Turk

**MUSIC EDUCATOR'S NATIONAL
CONFERENCE**

President: Bernice James
VP: Jason Boyers
Secretary: Keren Knapp
Treasurer: Gene Armistead
Member at Large:
Heather Beers
Advisor: Norman Fox
Eric Mang

THE NYACK COLLEGE JOURNAL

Editor: Jody Rambo
Assoc Editor: Ray Voegeli
Editorial Assistants: Monica Mendez
Adriana Ianculovici
Beverley Crawford
Raymond Voegeli
Advisor: Edith Everson

SCHOOL GOVERNMENT

STUDENT GOVERNMENT ASSOCIATION

President: Charlie Baile
VP: Mari Gettman
Treasurer: Jeff Wallace
Secretary: Jill Devere
Acad Affairs: Lynette Oster
Christian Serv: Frank Dixon
Intramural Activities: William Houshour
Student Services: Rob Byram
Student Union: Janine Flax
Advisors: Joy Conklin
Bill Newsom
Freshman Pres: Wanda Vega
Sophomore Pres: Dwayne Bertram
Junior Pres: Mark Lynch
Senior Pres: Tom Hickman

STUDENT JUDICIARY BOARD

SGA VP and Chairperson:
Mari Gettman
Soph Class Rep: Kurt Glancy
Jun Class Rep: Dan Cornell
Marcia Temple
Sen Class Rep: Ray Kochis
Sarah Snow
Faculty Rep: Richard Eldred
Dean of Students:
Dean Pletincks
Asst Deans: Cathy Rowan
Beverly Davis

Mayble Adukkalil
Jennifer Austin
Jonette Benjamin
Cynthia Blackburn
Jenni Camp
Laureen Carter
Troy Clark
Tracy Cline

RESIDENT ASSITANTS

Dan Cornell
John Eells
Christy Kaufmann
Bridgett Lawhon
Mark Lynch
Steve Marth
Terri Miles
Melanie Nadeau

Lynette Oster
Debi Reilly
Daniel Rothra
Sam Stemple
Jennifer Stutzman
Sharman Taube
Jeff Wallace

ALPHA CHI

No information given

OTHER ORGANIZATIONS

FOOD SERVICE REVIEW COMMITTEE

Freshmen: Eric Bradford
Kim Tamsett
Sophomore: Joe Noga
Charlene Leach
Junior: Beth Foland
Senior: Melanie Nadeau
Advisor: David Pletincks

MARRIED STUDENT ASSOCIATION

President: Michael Labrador
VP/Treasurer: Tim McDonald
Secretary: Judy McDonald
Advisor: Kimberly Farrell

MISSIONARIAN

Editor: Amy Henry
Business Manager: TBA
Photo Editor: Dan Rothra
Advisors: Richard Eldred
Ralph Ellenberger

MISSIONARY COMMITTEE

President: Jon-David Hawks
VP: Robyn Hovey
Secretary: Cami Peterson
Treasurer: Miriam Luzunaris
Outreach: Aeyoung Yoo
Student Fellowship: Margaret Sills
Prayer Chairman: Ruthie Strubbe
Summer Ministry Chairman: Debra Holinitch
Members at Large: Donna Mattner, Doug Walker
Support Personnel: Kevin Zwart, Rick Harner
Advisor: Larry Poston

SCIENCE FICTION CLUB

No Information Given

A vertical decorative graphic consisting of two thick black vertical bars on the left and right sides. Between these bars, the word "CURRICULUM" is written in a bold, black, sans-serif font, oriented vertically from top to bottom. At the top and bottom of the central text area, there are three short, thick vertical bars on each side, creating a symmetrical, stylized frame.

CURRICULUM

ENROLLMENT BY CLASS, MAJOR, FULL-TIME AND PART-TIME

In 1990-91 the two majors with the largest percentage of juniors and seniors were Elementary Education (23.5%) and Psychology (20.3%). Other majors that currently have relatively large percentages of students are Bible (12.4%), English (8.8%), Music Education (6.5%), and Business (5.5%).

1990-91

	Junior		Senior		Full-Time		Part-Time		Total	
	#	%	#	%	#	%	#	%	#	%
=====										
ASSOCIATE DEGREES										
Associate in Arts	1	0.9%	0	0.0%	1	0.5%	0	0.0%	1	0.5%
Associate in Science	0	0.0%	0	0.0%	0	0.0%	0	0.0%	0	0.0%
PROFESSIONAL MAJORS										
Christian Education	4	3.4%	1	1.0%	4	1.8%	1	0.5%	5	2.3%
Missiology	3	2.6%	1	1.0%	4	1.8%	0	0.0%	4	1.8%
Pastoral Ministry	1	0.9%	0	0.0%	1	0.5%	0	0.0%	1	0.5%
Elementary Education	30	25.9%	21	20.8%	51	23.5%	0	0.0%	51	23.5%
Music Education	5	4.3%	9	8.9%	14	6.5%	0	0.0%	14	6.5%
Secondary Education	2	1.7%	0	0.0%	2	0.9%	0	0.0%	2	0.9%
Interdisciplinary BS	2	1.7%	4	4.0%	6	2.8%	0	0.0%	6	2.8%
Business Administration	10	8.6%	2	2.0%	11	5.1%	1	0.5%	12	5.5%
Youth Ministries	4	3.4%	2	2.0%	6	2.8%	0	0.0%	6	2.8%
LIBERAL ARTS MAJORS										
Bible	13	11.2%	14	13.9%	24	11.1%	3	1.4%	27	12.4%
Cross Cultural Studies	0	0.0%	1	1.0%	1	0.5%	0	0.0%	1	0.5%
English	9	7.8%	10	9.9%	18	8.3%	1	0.5%	19	8.8%
History	2	1.7%	4	4.0%	5	2.3%	1	0.5%	6	2.8%
Philosophy	1	0.9%	1	1.0%	2	0.9%	0	0.0%	2	0.9%
Psychology	26	22.4%	18	17.8%	37	17.1%	7	3.2%	44	20.3%
Religion	0	0.0%	1	1.0%	1	0.5%	0	0.0%	1	0.5%
Social Science	2	1.7%	6	5.9%	8	3.7%	0	0.0%	8	3.7%
Interdisciplinary BA	1	0.9%	2	2.0%	3	1.4%	0	0.0%	3	1.4%
MUSIC MAJORS										
Church Music	0	0.0%	2	2.0%	2	0.9%	0	0.0%	2	0.9%
Composition	0	0.0%	0	0.0%	0	0.0%	0	0.0%	0	0.0%
Keybd/Orches	0	0.0%	1	1.0%	1	0.5%	0	0.0%	1	0.5%
Voice	0	0.0%	1	1.0%	1	0.5%	0	0.0%	1	0.5%
	====		====		====		====		==	
TOTALS	116		101		203		14		217	

Source: Registrar's Office
IR/ksd
Jul-91

DEGREES CONFERRED BY MAJOR

	1978		1987		1988		1989		1990		1991	
	#	%	#	%	#	%	#	%	#	%	#	%
=====												
ASSOCIATE DEGREES												
Assoc. in Science				0.0%	1	1.2%		0.0%	1	1.1%	0	0.0%
Assoc. in Arts			5	5.7%	2	2.4%	6	6.1%	6	6.7%	6	5.7%
Subtotal	0	0.0%	5	5.7%	3	3.6%	6	6.1%	7	7.8%	6	5.7%

BACHELOR OF SCIENCE												
Christian Ed.	8	8.7%	4	4.5%	3	3.6%	3	3.0%	3	3.3%	1	1.0%
Elementary Ed.	13	14.1%	15	17.0%	12	14.5%	13	13.1%	18	20.0%	20	19.0%
Interdisciplinary		0.0%		0.0%		0.0%		0.0%	2	2.2%	4	3.8%
Missiology	15	16.3%	5	5.7%	4	4.8%	2	2.0%	2	2.2%	2	1.9%
Pastoral Min.	4	4.3%	3	3.4%	2	2.4%	2	2.0%	1	1.1%	0	0.0%
Business Admin.		0.0%		0.0%		0.0%	3	3.0%	4	4.4%	2	1.9%
Youth Ministry											3	
Sub-total	40	43.5%	27	30.7%	21	25.3%	23	23.2%	30	33.3%	32	30.5%

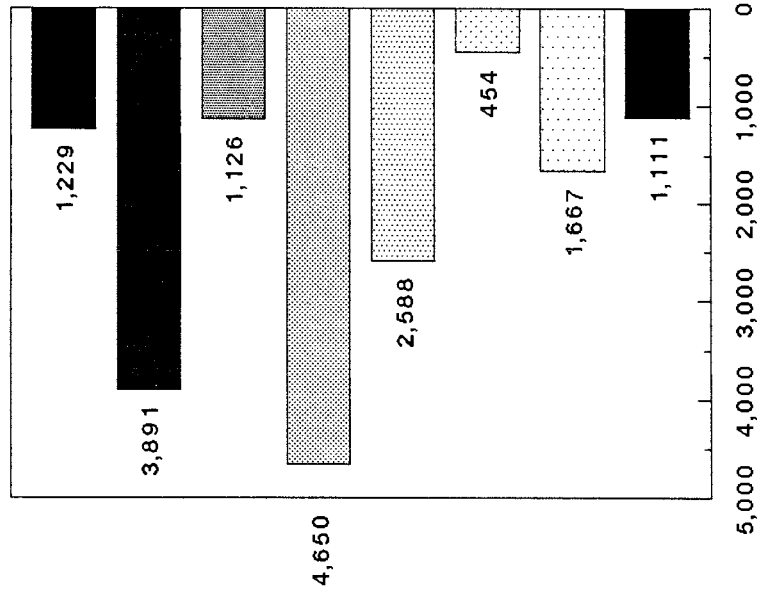
BACHELOR OF ARTS												
Bible		0.0%	9	10.2%	14	16.9%	13	13.1%	6	6.7%	13	12.4%
Cross Cult. St.		0.0%		0.0%	2	2.4%	2	2.0%	2	2.2%	0	0.0%
English	5	5.4%	8	9.1%	8	9.6%	7	7.1%	10	11.1%	11	10.5%
History	2	2.2%	3	3.4%	1	1.2%	4	4.0%	5	5.6%	5	4.8%
Interdisciplinary		0.0%		0.0%		0.0%		0.0%	2	2.2%	2	1.9%
Philosophy	2	2.2%	2	2.3%	3	3.6%	3	3.0%	1	1.1%	1	1.0%
Psychology	11	12.0%	13	14.8%	15	18.1%	22	22.2%	8	8.9%	20	19.0%
Religion	5	5.4%	5	5.7%	4	4.8%		0.0%	1	1.1%	1	1.0%
Social Science	8	8.7%	9	10.2%	11	13.3%	8	8.1%	12	13.3%	7	6.7%
Sub-total	33	35.9%	49	55.7%	58	69.9%	59	59.6%	47	52.2%	60	57.1%

BACHELOR OF MUSIC												
Music Ed.	7	7.6%	4	4.5%		0.0%	4	4.0%	4	4.4%	4	3.8%
Keyboard/Instr.	7	7.6%	2	2.3%		0.0%	3	3.0%	0	0.0%	1	1.0%
Vocal	4	4.3%		0.0%	1	1.2%	1	1.0%	1	1.1%	1	1.0%
Composition	1	1.1%		0.0%		0.0%	1	1.0%	0	0.0%	0	0.0%
Sub-total	19	20.7%	6	6.8%	1	1.2%	9	9.1%	5	5.6%	6	5.7%

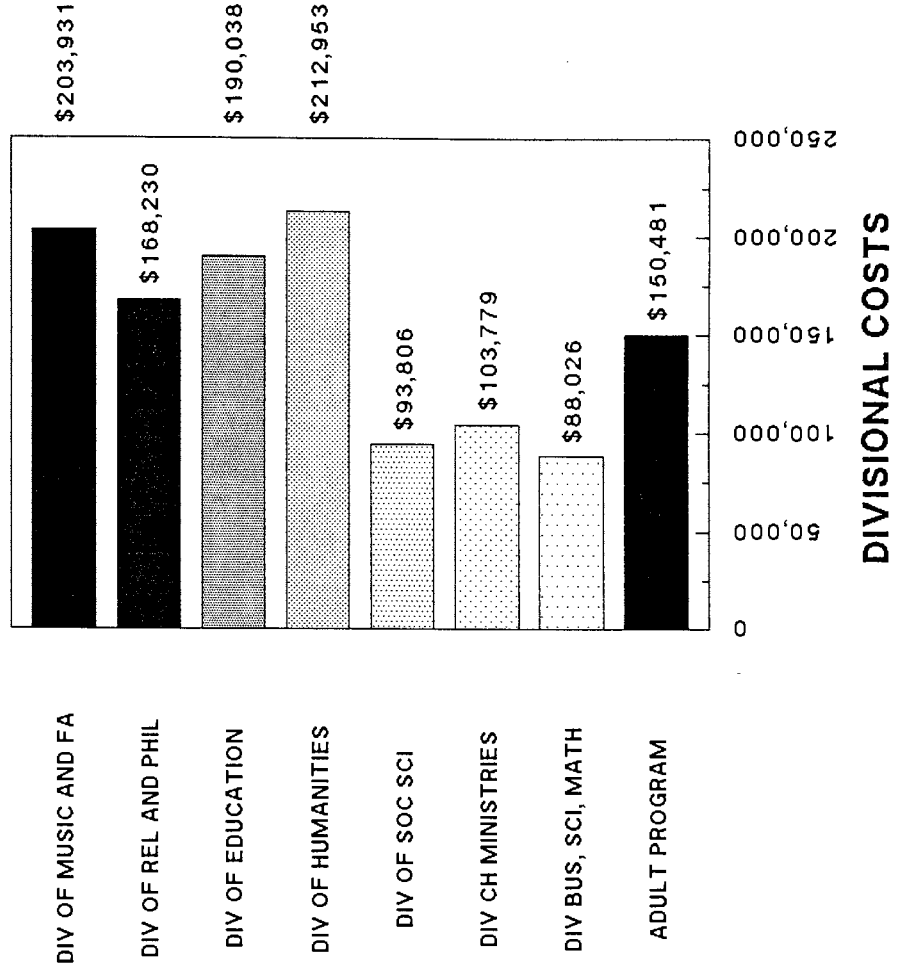
BACHELOR OF SACRED MUSIC												
Church Music		0.0%	1	1.1%		0.0%	2	2.0%	1	1.1%	1	1.0%
TOTAL	92		88		83		99		90		105	

Source: Registrar's Office
 IR/ksd
 Jul-91

DIVISIONAL PRODUCTIVITY 1989-90

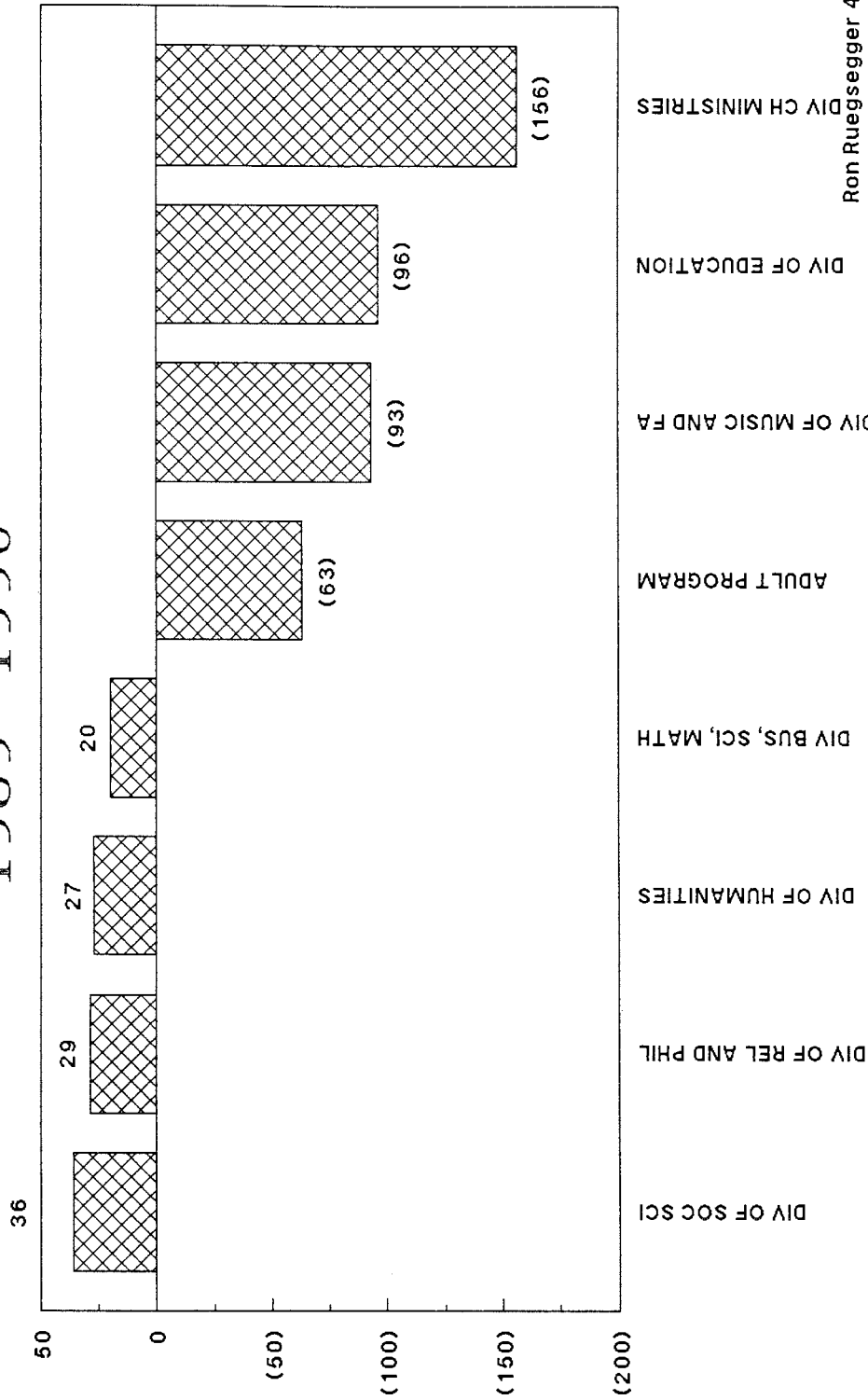


CREDIT HRS TAUGHT



DIVISIONAL COSTS

DEV FROM AVERAGE COST/CR HR By Rank Order 1989--1990



Ron Ruegsegger 4/26/91
(Adult program does not include NCE payback)
G:\GW\CHARTS\BUDGET\PRODUCT\DEV89-90

AVER COST/CR HR IS \$72.5

COST PER MAJOR

	UPPER LEVEL	LOWER LEVEL	TOTAL	% OF MAJORS	89-90 BUDGET PER STUD	90-91 BUDGET PER STUD	89-90 BUDGET	90-91 BUDGET
1 DIVISION OF BUSINESS SCIENCE AND MATH								
1.1 BUSINESS	8	42	50	11.39%				
TOTAL	8	42	50	11.39%	\$1,940	\$2,514	\$97,000.00	\$125,722.00
2 DIVISION OF CHRISTIAN MINISTRIES								
2.1 CHRISTIAN EDUCATION	5	13	18	4.10%				
2.2 MISSIOLOGY	5	8	13	2.96%				
2.3 PASTORAL MINISTRY	2	9	11	2.51%				
2.4 YOUTH MINISTRIES	2	9	11	2.51%				
TOTAL	14	39	53	12.07%	\$2,103	\$2,012	\$111,450.00	\$106,652.00
3 DIVISION OF EDUCATION								
3.1 ELEMENTARY ED	37	76	113	25.74%				
3.2 SECONDARY ED	3			0.00%				
3.3 MUSIC EDUCATION (20%)	3.2	2.4	5.6	1.28%				
TOTAL	43.2	78.4	118.6	27.02%	\$1,612	\$1,232	\$191,200.00	\$146,066.00
4 DIVISION OF HUMANITIES								
4.1 ENGLISH	18	14	32	7.29%				
4.2 HISTORY	10	8	18	4.10%				
TOTAL	28	22	50	11.39%	\$4,524	\$4,373	\$226,200.00	\$218,651.00
5 DIVISION OF MUSIC AND FINE ARTS								
5.1 CHURCH MUSIC	2	1	3	0.68%				
5.2 VOCAL	1	2	3	0.68%				
5.3 MUSIC EDUCATION (80%)	12.8	9.6	22.4	5.10%				
TOTAL	15.8	12.6	28.4	6.47%	\$6,800	\$5,617	\$193,112.00	\$159,528.00
6 DIVISION OF RELIGION AND PHILOSOPHY								
6.1 BIBLE	21	20	41	9.34%				
6.2 PHILOSOPHY	2	3	5	1.14%				
6.3 RELIGION	2	1	3	0.68%				
TOTAL	25	24	49	11.16%	\$3,848	\$3,623	\$188,560.00	\$177,510.00
7 DIVISION OF SOCIAL SCIENCE								
7.1 PSYCHOLOGY	26	33	59	13.44%				
7.2 SOCIAL SCIENCE	19	12	31	7.06%				
TOTAL	45	45	90	20.50%	\$1,314	\$1,738	\$118,300.00	\$156,445.00
GRAND TOTAL	179	263	439	100.00%	\$2,565	\$2,484	\$1,125,822.00	\$1,090,574.00

NOTE: The budget for Music and Fine arts has been reduced by the amount of fees collected.

**FACULTY
AND
STAFF**

FACULTY SUMMARY

In the Fall of 1990 there were 53 Full-Time faculty members at Nyack College. The ranking that contains the largest number of faculty is the rank of Assistant Professor (23%). There are equal percentages of Full Professors (13%) and Associate Professors (13%). Of the 53 faculty members 34% have obtained Doctorates and 49% Masters degrees.

Males make-up 72% of the Faculty members while females make-up the remaining 28%.

		Full-Time	
		#	%
Total		53	100%
Rank			
	Professor	7	13%
	Associate Professor	7	13%
	Assistant Professor	12	23%
	Instructor	10	19%
	Non-Teaching	17	32%
Degrees			
	Doctorate	18	34%
	Masters	26	49%
	Bachelors	9	17%
Gender			
	Male	38	72%
	Female	15	28%

Source: Academic Office

IR/kf

7/91

FACULTY BY RANK, GENDER, STATUS, SERVICE, & RACE

	79--8		86--8		87--8		88--8		89-90		90-91	
	#	%	#	%	#	%	#	%	#	%	#	%
=====	=====	=====	=====	=====	=====	=====	=====	=====	=====	=====	=====	=====
PROFESSOR TOTALS	11	32.4%	9	29.0%	7	21.9%	9	25.7%	9	24.3%	7	19.4%
Gender: Male	9	26.5%	7	22.6%	5	15.6%	6	17.1%	6	16.2%	6	16.7%
Female	2	5.9%	2	6.5%	2	6.3%	3	8.6%	3	8.1%	1	2.8%
Status: Full	10	29.4%	8	25.8%	6	18.8%	8	22.9%	8	21.6%	6	16.7%
Part	1	2.9%	1	3.2%	1	3.1%	1	2.9%	1	2.7%	1	2.8%
Service: Ave. Years	18		19		20		20		18		18	
Tenured	11	32.4%	7	22.6%	7	21.9%	7	20.0%	6	16.2%	5	13.9%
Race: Black/Non-Hi	0	0.0%	0	0.0%	0	0.0%	0	0.0%	0	0.0%	0	0.0%
Hispanic	0	0.0%	0	0.0%	0	0.0%	0	0.0%	0	0.0%	0	0.0%
Asian/Amer	1	2.9%	0	0.0%	0	0.0%	0	0.0%	0	0.0%	0	0.0%
White/Non-Hi	10	29.4%	9	29.0%	7	21.9%	9	25.7%	9	24.3%	7	19.4%
Non-res Alie	0	0.0%	0	0.0%	0	0.0%	0	0.0%	0	0.0%	0	0.0%
ASSOCIATE PROF. TOTAL	8	23.5%	5	16.1%	5	15.6%	9	25.7%	7	18.9%	7	19.4%
Gender: Male	6	17.6%	4	12.9%	4	12.5%	8	22.9%	7	18.9%	7	19.4%
Female	2	5.9%	1	3.2%	1	3.1%	1	2.9%	0	0.0%	0	0.0%
Status: Full	7	20.6%	4	12.9%	4	12.5%	8	22.9%	7	18.9%	7	19.4%
Part	1	2.9%	1	3.2%	1	3.1%	1	2.9%	0	0.0%	0	0.0%
Service: Ave. Years	11		12.8		13		11		15		16	
Tenured	6	17.6%	3	9.7%	3	9.4%	5	14.3%	5	13.5%	5	13.9%
Race: Black/Non-Hi	0	0.0%	0	0.0%	0	0.0%	0	0.0%	0	0.0%	0	0.0%
Hispanic	1	2.9%	0	0.0%	0	0.0%	0	0.0%	0	0.0%	0	0.0%
Asian/Amer	0	0.0%	0	0.0%	0	0.0%	0	0.0%	0	0.0%	0	0.0%
White/Non-Hi	7	20.6%	5	16.1%	5	15.6%	9	25.7%	7	18.9%	7	19.4%
Non-res Alie	0	0.0%	0	0.0%	0	0.0%	0	0.0%	0	0.0%	0	0.0%
ASSISTANT PROF. TOTAL	6	17.6%	9	29.0%	11	34.4%	6	17.1%	9	24.3%	12	33.3%
Gender: Male	5	14.7%	7	22.6%	9	28.1%	5	14.3%	5	13.5%	6	16.7%
Female	1	2.9%	2	6.5%	2	6.3%	1	2.9%	4	10.8%	6	16.7%
Status: Full	4	11.8%	6	19.4%	8	25.0%	3	8.6%	7	18.9%	11	30.6%
Part	2	5.9%	3	9.7%	3	9.4%	3	8.6%	2	5.4%	1	2.8%
Service: Ave. Years	7.3		8		7.4		1.7		2.6		2.3	
Tenured	1	2.9%	3	9.7%	1	3.1%	0	0.0%	0	0.0%	0	0.0%
Race: Black/Non-Hi	0	0.0%	0	0.0%	0	0.0%	0	0.0%	0	0.0%	0	0.0%
Hispanic	0	0.0%	0	0.0%	0	0.0%	0	0.0%	0	0.0%	0	0.0%
Asian/Amer	0	0.0%	0	0.0%	0	0.0%	0	0.0%	0	0.0%	0	0.0%
White/Non-Hi	6	17.6%	9	29.0%	11	34.4%	6	17.1%	9	24.3%	11	30.6%
Non-res Alie	0	0.0%	0	0.0%	0	0.0%	0	0.0%	0	0.0%	0	0.0%
INSTRUCTORS TOTAL	9	26.5%	8	25.8%	9	28.1%	11	31.4%	12	32.4%	10	27.8%
Gender: Male	6	17.6%	6	19.4%	4	12.5%	4	11.4%	6	16.2%	7	19.4%
Female	3	8.8%	2	6.5%	5	15.6%	7	20.0%	6	16.2%	3	8.3%
Status: Full	1	2.9%	1	3.2%	2	6.3%	0	0.0%	3	8.1%	8	22.2%
Part	8	23.5%	7	22.6%	7	21.9%	11	31.4%	9	24.3%	2	5.6%
Service: Ave. Years	4.9		5.9		2.6		1.4		2.4		2.9	
Tenured	0	0.0%	0	0.0%	0	0.0%	0	0.0%	0	0.0%	0	0.0%
Race: Black/Non-Hi	0	0.0%	0	0.0%	0	0.0%	1	2.9%	1	2.7%	1	2.8%
Hispanic	0	0.0%	0	0.0%	0	0.0%	0	0.0%	1	2.7%	0	0.0%
Asian/Amer	0	0.0%	0	0.0%	0	0.0%	1	2.9%	1	2.7%	1	2.8%
White/Non-Hi	9	26.5%	8	25.8%	9	28.1%	9	25.7%	9	24.3%	8	22.2%
Non-res Alie	0	0.0%	0	0.0%	0	0.0%	0	0.0%	0	0.0%	0	0.0%
TOTAL	34		31		32		35		37		36	

FACULTY BY RANK, GENDER, STATUS, SERVICE, & RACE

	79--8	86--8	87--8	88--8	89-90	89-90
	#	#	#	#	#	#
=====						
ADJUNCT*						
Gender: Male	15	14	14	11	17	14
Female	7	7	5	11	9	10
Status: Full						
Part	22	21	19	22	26	24
Race: Black/Non-His			1	1	1	1
Hispanic	1	2	1	1		
Asian/Amer			1			
White/Non-Hi	21	19	16	20	25	23
Non-res Alien						
	-----	-----	-----	-----	-----	-----
	22	21	19	22	26	24
NONTEACHING						
Gender: Male	6	9	8	11	11	12
Female	2	2		3	2	5
Status: Full	8	11	8	14	12	17
Part					1	0
Tenured	2	1				
Service: Ave. Years				3	4.5	3.1
Race: Black/Non-His		1	1	1	1	1
Hispanic						1
Asian/Amer	1					
White/Non-Hi	7	10	7	13	12	15
Non-res Alien						
	-----	-----	-----	-----	-----	-----
	8	11	8	14	13	17

*Data does not include Commission Faculty

Source: Academic Office
 IR/ksf
 Jul-91

STAFF BY RANK, GENDER, RACE, SERVICE AND DEGREE

The staff at Nyack College have been categorized into five groups: Service/Maintenance, Management/Confidential, Executive Secretary, Secretary, and Clerical. Employees of Pioneer Food Service, and Service Master are not included.

There are a total of 52 staff members employed at the College. Of these 52, 37% are males and 63% are females. Nyack's employees are composed of 94% white staff and 6% minorities. 72% of the staff members hold some form of a degree (Doctorate 2%, Masters 8%, Bachelors 56%, and Associates 6%).

Among the 52 staff members 71% have been employed at Nyack for less than 5 years.

STAFF CLASSIFICATIONS		#	%
Staff Summary	Total	52	100%
	Sex		
	Male	19	37%
	Female	33	63%
	Race		
	White	49	94%
	Asian	2	4%
	Hispanic	1	2%
	Yrs of Service		
	15 plus	4	8%
	10 to 14	3	6%
	5 to 9	8	15%
	Less than 5	37	71%
	Degree		
	Associate	3	6%
	Bachelors	29	56%
	Masters	4	8%
	Doctorate	1	2%

STAFF CLASSIFICATIONS		#	%
Service Maintenance	Total	16	100%
	Sex		
	Male	13	81%
	Female	3	19%
	Race		
	White	13	81%
	Asian	2	13%
	Hispanic	1	6%
	Yrs of Service		
	15 plus	2	13%
	10 to 14	0	0%
	5 to 9	1	6%
	Less than 5	13	81%
	Degree		
	Associate	1	14%
	Bachelors	9	129%
	Masters	2	29%
	Doctorate	1	14%

Staff Continue

STAFF CLASSIFICATIONS			
		#	%
Management / Total		11	100%
Confidential Staff			
	Sex		
	Male	6	55%
	Female	5	45%
	Race		
	White	11	100%
			0%
	Yrs of Service		
	15 plus	2	18%
	10 to 14	0	0%
	5 to 9	2	18%
	Less than 5	7	64%
			0%
	Degree		
	Associate	1	9%
	Bachelors	6	55%
	Masters	2	18%
	Doctorate	0	0%

STAFF CLASSIFICATIONS			
		#	%
Secretary Total		8	100%
	Sex		
	Male	0	0%
	Female	8	100%
	Race		
	White	8	100%
	Yrs of Service		
	15 plus	0	0%
	10 to 14	1	13%
	5 to 9	2	25%
	Less than 5	5	63%
	Degree		
	Associate	0	0%
	Bachelors	6	75%
	Masters	0	0%
	Doctorate	0	0%

STAFF CLASSIFICATIONS			
		#	%
Executive Secretary Total		8	100%
	Sex		
	Male	0	0%
	Female	8	100%
	Race		
	White	8	100%
	Yrs of Service		
	15 plus	0	0%
	10 to 14	2	25%
	5 to 9	1	13%
	Less than 5	5	63%
	Degree		
	Associate	1	13%
	Bachelors	4	50%
	Masters	0	0%
	Doctorate	0	0%

STAFF CLASSIFICATIONS			
		#	%
Clerical Total		9	100%
	Sex		
	Male	0	0%
	Female	9	100%
	Race		
	White	9	100%
	Yrs of Service		
	15 plus	0	0%
	10 to 14	0	0%
	5 to 9	2	22%
	Less than 5	7	78%
	Degree		
	Associate	0	0%
	Bachelors	4	44%
	Masters	0	0%
	Doctorate	0	0%

Source: Assistant Treasurer's Office
 IR/kf
 Jun-91

ALUMNI

ALUMNI SUPPORT

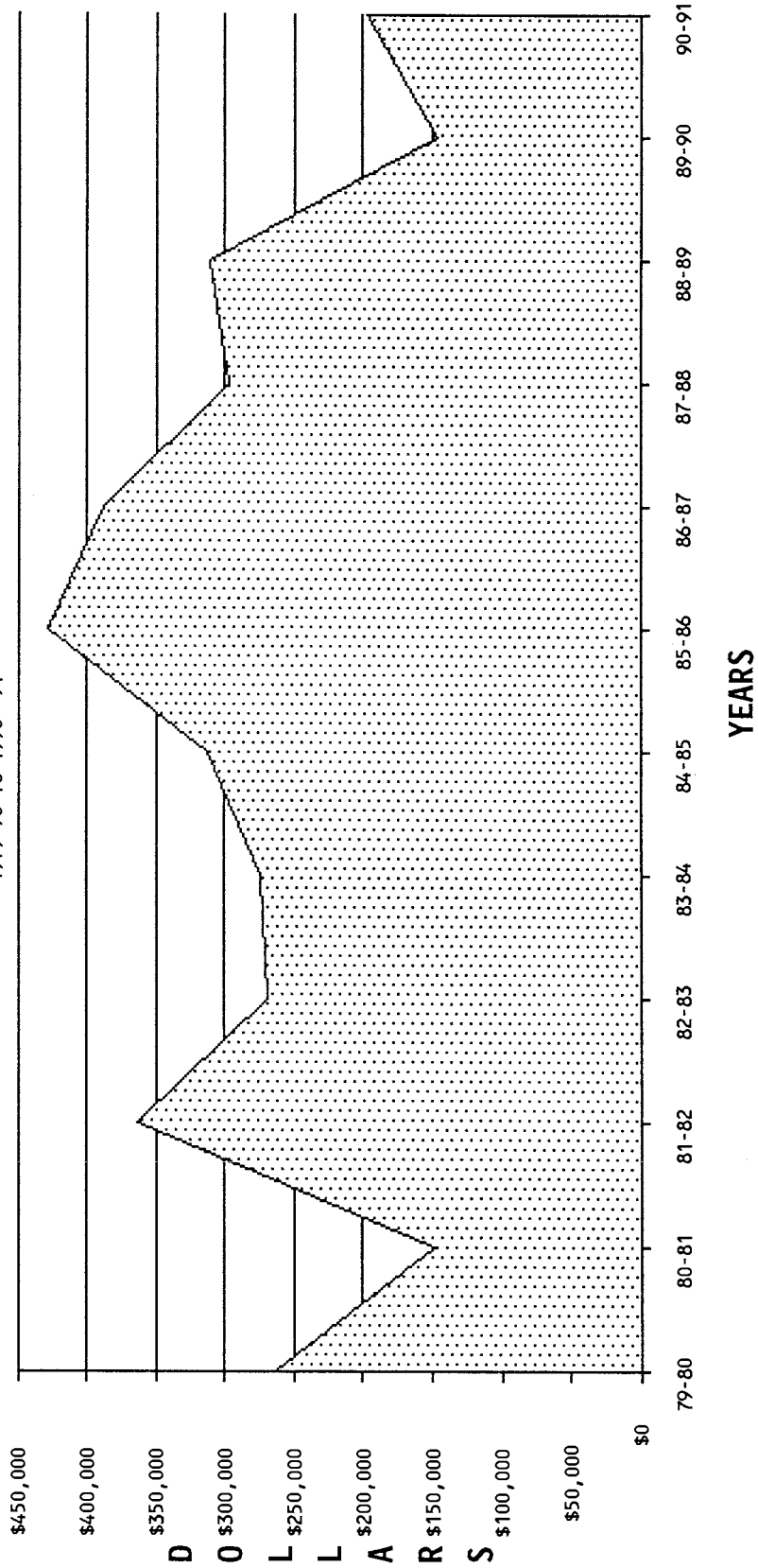
Fiscal Year	Active Mailing List	# of Donors	Average Gift	Total Support	% Change From Last Year
=====	=====	=====	=====	=====	=====
1976-77	*	766	\$93	\$70,974	
1977-78	*	945	\$109	\$102,968	31.1%
1978-79	*	1083	\$99	\$106,739	3.5%
1979-80	*	915	\$289	\$264,091	59.6%
1980-81	*	936	\$158	\$147,502	-79.0%
1981-82	*	1158	\$314	\$363,644	59.4%
1982-83	*	972	\$278	\$270,003	-34.7%
1983-84	*	1356	\$202	\$274,538	1.7%
1984-85	*	1221	\$257	\$313,428	12.4%
1985-86	*	925	\$464	\$429,216	27.0%
1986-87	*	1201	\$323	\$388,312	-10.5%
1987-88	6,653	749	\$397	\$297,104	-30.7%
1988-89	6,600	744	\$418	\$311,050	4.5%
1989-90	6,512	1731	\$85	\$147,222	-111.3%
1990-91	7,068	702	\$281	\$197,201	25.3%

* Data not available

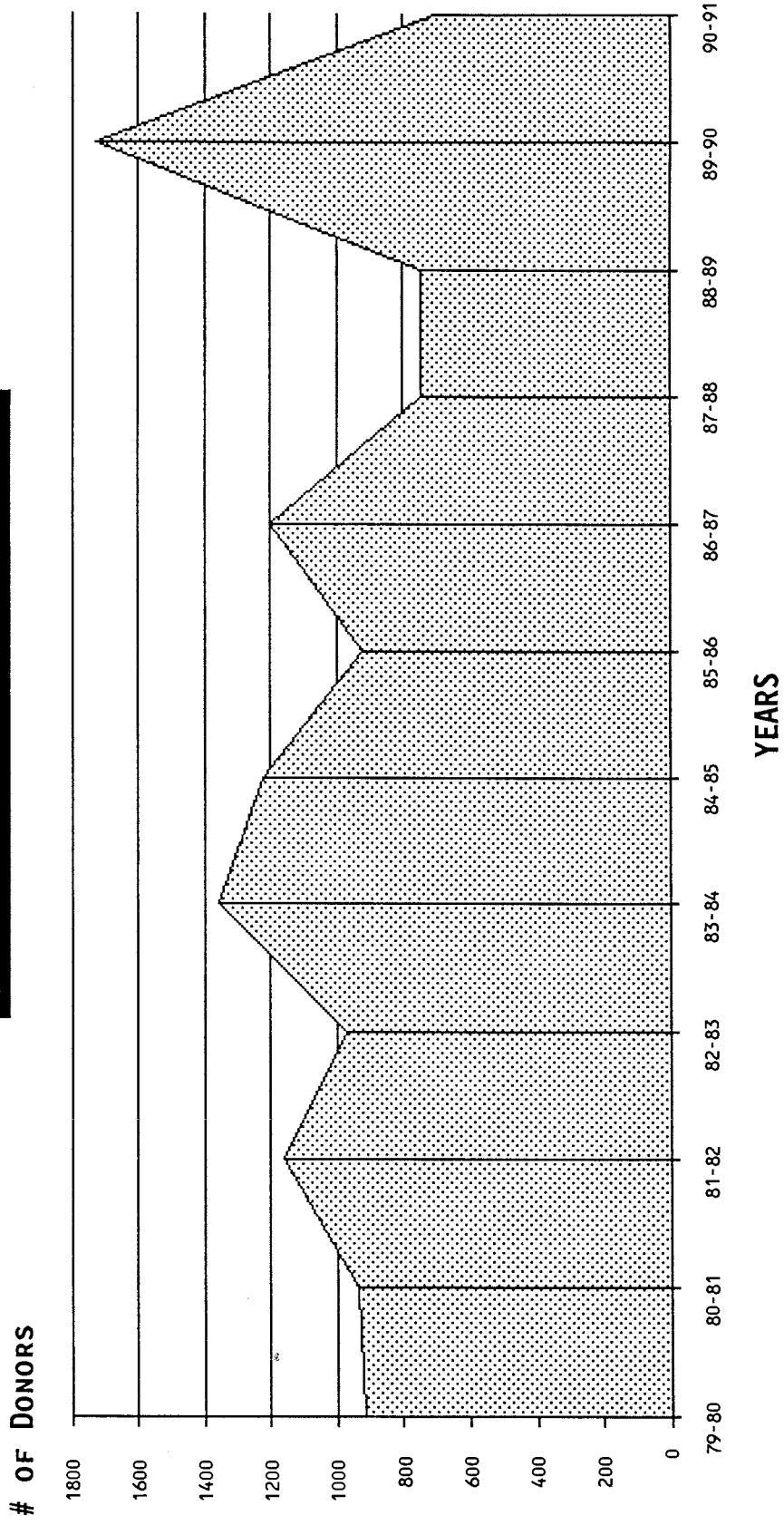
Source: Advancement Office
 IR/kf
 Jul-91

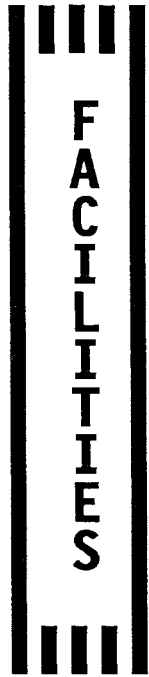
ALUMNI SUPPORT

1979-90 To 1990--91



NUMBER OF ALUMNI DONORS



A vertical decorative graphic consisting of two thick black vertical bars on the left and right sides. Between these bars, the word "FACILITIES" is written in a bold, black, sans-serif font, oriented vertically. At the top and bottom of the central text area, there are three short, thick vertical bars on each side, creating a symmetrical, stylized frame.

FACILITIES

FACILITIES

1. BASIC STRUCTURES	SQ. FT.	Floors	FUNCTIONS
Campus Center	55,380	5	Classrooms/Student Services/Offices
Christie Hall	37,693	B-4	Dormitory
Ed. Building	1,801	2	Classrooms & Offices
Faculty Offices	2,198	2	Offices
Moseley Hall	6,256	2	Dormitory
Pardington Hall	22,740	B-4	Classrooms. Offices, Chapel
Shuman Hall	23,194	B-2	Library & Offices
Simpson Hall	53,040	B-4	Dormitory & Classrooms
Bowman Gym			

2. ROOM USE CATEGORIES	SQ. FT.
Classrooms	9,663
Laboratories	5,729
Offices - Faculty	2,198
Offices - Administration	9,259
Assembly Facilities	2,840
Food Service	6,772
Lounges	9,522
Merchandising Facilities	1,332
Storage	10,904
Health Care Facilities	253
Athletic Facilities	16,014
Library	7,903
Dorm Rooms	43,296

3. TOTAL ACREAGE 65

NOTES:

Sections 1 & 2 are undergraduate totals.

The total acreage was estimated by the Treasurer's Office and includes both Nyack & ATS.

This data does not include the rearrangement of offices that is taking place over the summers of 1991 and 1992.

Source: Committee Reports of
 Long Range Planning Committee
 and B & G Collected in 1988.

IR/ah
 8/88



**F
I
N
A
N
C
E
S**

NYACK COLLEGE FINANCIAL HISTORY
1986-87 TO 1990-91

	ACTUAL 1986-87	ACTUAL 1987-88	ACTUAL 1988-89	ACTUAL 1989-90	BUDGET 1990-91	AVERAGE YEARLY INCREASE
TUITION & FEES						
TRADITIONAL TUITION	2,391,907	2,741,146	3,005,264	3,142,594	3,332,595	10.46%
ADULT ED TUITION	0	0	0	240,625	714,000	
LAB FEES	4,560	4,225	3,905	5,805	5,785	9.10%
MUSIC & FINE ARTS FEES	31,905	28,077	51,389	28,989	28,656	-3.05%
EDUCATION LAB FEES	2,375	2,298	2,425	2,843	2,825	6.56%
PHYSICAL EDUCATION FEES	1,894	1,726	1,484	1,331	1,325	-9.91%
OTHER ACADEMIC FEES	4,284	27,712	8,697	4,395	4,390	0.86%
COMPOSITE FEES	117,312	134,303	144,935	151,003	147,456	9.57%
STUDENT ACTIVITY FEES ALLOCATED	(38,483)	(39,825)	(32,121)	(32,942)	(33,000)	-4.80%
OTHER FEES	11,746			22,045	62,300	29.23%
TOTAL TUITION & FEES	2,527,500	2,899,662	3,185,978	3,566,687	4,266,332	13.71%
OTHER SOURCES OF INCOME						
GOVERNMENT INCOME	47,289			(562)	44,000	-33.73%
PRIVATE GIFTS & GRANTS	217,022	333,727	567,877	745,771	787,715	81.21%
STUDENT AID	113,250			9,340	8,000	-30.58%
SALES & SERVICES OF ED. ACTIVITIES	49,801	51,205	26,548	2,726	1,600	-31.51%
RECOVERY OF INDIRECT COSTS	9,933	10,147	4,939	8,964	0	-3.25%
OTHER SOURCES	154,996	75,521	80,250	141,760	96,400	-2.85%
TOTAL OTHER SOURCES	592,291	470,600	679,614	908,000	937,715	17.77%
TOTAL EDUCATIONAL & GEN. REVENUE	3,119,791	3,370,262	3,865,592	4,474,687	5,204,047	14.48%
AUXILIARY SERVICES	1,681,989	1,733,102	1,846,049	1,951,180	1,877,275	5.33%
TOTAL CURRENT FUND REVENUE	4,801,780	5,103,364	5,711,641	6,425,868	7,081,322	11.27%
INSTRUCTION						
ADULT EDUCATION	913,913	1,098,902	1,273,083	1,228,651	1,329,985	11.48%
ACADEMIC SUPPORT	182,385	199,542	230,092	360,524	517,238	
PUBLIC SERVICE	6,568	6,719	7,282	201,740	280,783	3.54%
STUDENT SERVICES	667,256	817,122	850,816	4,435	1,000	-10.83%
INSTITUTIONAL SUPPORT	818,431	949,196	1,209,206	859,952	850,596	9.63%
OPERATION OF PLANT	537,963	565,859	709,645	1,072,546	1,198,756	10.35%
STUDENT AID	314,441	441,114	552,985	611,596	590,852	4.56%
TOTAL E & G EXPENSE	3,440,957	4,078,454	4,833,109	4,844,157	5,350,535	13.59%
E & G MANDATORY TRANSFERS	214,498	19,082	39,419	110,572	142,000	-16.15%
TOTAL E & G & MANDATORY TRANSFERS	3,655,455	4,097,536	4,872,528	4,954,728	5,492,535	11.85%
AUXILLIARY SERVICES	954,078	979,254	1,207,093	1,351,110	1,390,787	13.87%
AUX. SERV. MANDATORY TRANSFERS	58,234			126,440	167,000	39.04%
TOTAL AUXILIARY & MAND. TRANS.	1,012,312	979,254	1,207,093	1,477,550	1,557,787	15.32%
TOTAL NON-MANDATORY TRANSFERS	129,000				31,000	-33.33%
TOTAL EXPENSES & TRANSFERS	4,796,767	5,076,790	6,079,621	6,432,278	7,081,322	11.37%
TOTAL INCR. (DECR.) IN FUND BAL.	5,013	(27,093)	(365,869)	(6,411)	0	-75.96%

NOTE: The addition of ADCP income and expense in 89-90 and 90-91 has artificially increased the percent increase of income and expense for the whole college.

Ron Ruegsegger
Executive Assistant to the President

STUDENT AID

	89-90		90-91		90-91	
	# Awards	Dollars	# Awards	Dollars	# Awards	Dollars
=====	=====	=====	=====	=====	=====	=====
LOANS						
GSL	353	\$987,364	385	\$1,063,662	312	\$897,661
Perkins	133	\$82,386	111	\$71,587	118	\$74,400
PLUS	15	\$24,000	25	\$90,767	7	\$25,625
SLS			47	\$149,604	10	\$38,546
VSAC	10	\$11,650	5	\$3,985	3	\$4,750
EMPLOYMENT						
CWS	146	\$143,412	118	\$60,273	192	\$158,953
Non-CWS	*	*	159	\$114,298	*	*
GRANTS						
Tuition Remission	4	\$22,388	38	\$119,026	10	\$59,848
Top Ten Sch.	11	\$1,800	8	\$1,200	8	\$1,700
Pell	225	\$391,275	280	\$436,319	264	\$491,950
SEOG	82	\$23,450	135	\$38,125	121	\$46,000
TAP	194	\$461,222	256	\$569,448	183	\$491,440
HEOP-state	44	\$80,668	45	\$77,370	43	\$85,000
Scholarships	67	\$36,532	51	\$59,045	32	\$45,100
Institutional	416	\$338,358	571	\$478,258	487	\$482,218
	=====	=====	=====	=====	=====	=====
TOTAL	1700	\$2,604,504	2234	\$3,332,967	1790	\$2,903,191

* Data not available

Source: Financial Aid Office

IR/sb

Jul-91