

**THE NYACK COLLEGE
FACT BOOK**

1989-90

FOREWORD

The purpose of this Fact Book is to centralize and standardize data about Nyack College which can be utilized for planning, public relations, accreditation reviews, etc.

This is the third annual edition of the Fact Book. Additional data has been added in a few areas but for the most part much of it has remained the same.

Even though this is the third edition, there are still areas that could be improved and refined; additional data could be added as well as some data being presented more effectively. If there are any suggestions for improvement or areas that have been overlooked, please let me know.

Since the scope of this book is the entire institution, it has been necessary to collect data from many departments. I again thank you for your cooperation in helping to gather the data for this book.

Kimberly S. Farrell
Director of Institutional Research

TABLE OF CONTENTS

I.	Institutional Profile	p. 1
	A. Fingertip Facts	p. 2
	B. Board of Trustees: Members	p. 3
	C. Board of Trustees: Committees	p. 4
	D. Nyack College Organizational Charts	
	1. Central Administration	p. 5
	2. Academic Affairs	p. 6
	3. Finance	p. 7
	4. Student Development	p. 8
	5. Advancement	p. 9
II.	Students	p. 10
	A. Enrollment Summary	p. 11
	B. FTE Enrollment	p. 12
	C. Head Count Enrollment	p. 13
	D. Adult Program Enrollment	p. 14
	E. Enrollment by State of Origin	
	1. Summary Table	p. 15
	2. Mid-Atlantic Region	p. 16
	3. Other Regions	p. 17
	F. Enrollment by County	pp. 18 & 19
	G. Enrollment by Denominational Affiliation	
	1. Summary Table	p. 20
	2. The Christian & Missionary Alliance	p. 21
	3. Other Denominations	p. 22
	H. Enrollment by Race and Gender	p. 23
	I. Enrollment by Age and Marital Status	p. 24
	J. Vocational and Educational Intentions	
	1. Vocational Intentions	p. 25
	2. Church Related Verses Non-Church Related Vocational Intentions	p. 26
	K. Testing Results	
	1. Freshmen SAT Scores	p. 27
	2. National Teacher Examination	p. 27
	3. Major Field Achievement Tests	p. 28
	L. Retention Rates	
	1. Fall Enrollment of Freshmen and Transfers	p. 29
	2. Fall Enrollment of Freshmen	p. 30
	3. Fall Enrollment of Transfers	p. 31
III.	Curriculum	p. 32
	A. Enrollment by Class, Major, Full-Time, and Part-Time	p. 33
	B. Degrees Conferred By Major	p. 34
	C. Cost Per Major	pp. 35 & 36
	D. Divisional Productivity Chart	p. 37
	E. Deviation From Average Cost	p. 38

IV.	Faculty and Staff	p. 39
	A. Faculty Summary	p. 40
	B. Faculty by Rank, Gender, Status, Service, and Race	pp. 41 & 42
	C. Staff by Rank, Gender, Race, Service, and Degree	pp. 43, & 44
V.	Alumni	p. 45
	A. Alumni Support Summary Table	p. 46
	B. Alumni Support Dollars	p. 47
	C. Number of Alumni Donors	p. 48
VI.	Facilities	p. 49
	A. Square Footage and Functions	p. 50
VII.	Finances	p. 51
	A. Financial History	p. 52 & 53
	B. Student Aid	p. 54

**I
N
S
T
I
T
U
T
I
O
N
A
L

P
R
O
F
I
L
E**

BOARD OF TRUSTEE MEMBERS

TERM EXPIRES SEPTEMBER 1991

Mr. Rexford A. Boda *
President Nyack College and
Alliance Theological Seminary

Mr. Peter Dys
Executive Director
Shell Point Village

Rev. Paul Hazlett
District Superintendent
C & M A Metropolitan District

Mrs. Susan Brown Meenaghan *
President, Alumni Association
Alliance Theological Seminary

Dr. Robert E. Nanfelt
**Chairman of the Board of
Trustees**
Retired, President, US Fused
Quartz

Mr. Robert L. Sanford
Retired, President, International
Division of Nabisco Corp.

Mr. Duane A. Wheeland *
V.P. Finance/Treasurer - The
Christian and Missionary Alliance

TERM EXPIRES SEPTEMBER 1992

Rev. Richard W. Bailey
V.P. for Church Ministries - The
Christian and Missionary Alliance

Mr. Joseph E. Bersche
President, Controlled Dev., Inc.

Rev. Cornelius W. Clarke
District Superintendent
C & M A, New England District

Rev. Rockwell L. Dillaman
Pastor, Allegheny Center,
C & M A Church

Mr. James Gilbert *
President, Alumni Association
Nyack College

Dr. Walter J. Helsing
Retired, Orthopedic Surgeon

Rev. David K. Muir
District Superintendent
C & M A - Western PA District

Dr. Donald L. Paine
Pastor, Pineview Community Church

Rev. Woodford C. Stemple
District Superintendent
C & M A Northeastern Dist.

TERM EXPIRES SEPTEMBER 1993

Mr. Ronald E. Eastman
Group Vice President
Lodging Development, Marriott Corp.

Mr. Paul D. Glenn
Federal Home Loan Bank Board

Rev. Dahl B. Seckinger
District Superintendent
C & M A, Great Lakes District

Dr. Donald V. Seibert
Retired Chairman and CEO
J.C. Penny Co., Inc.

Mr. Ronald L. Wilson
Commercial Realtor

Dr. David Rambo
President, The Christian and Missionary
Alliance *

*Ex-Officio Members
(Members of the Board of Trustees are elected by the Board
of Managers of the C & MA)

COMMITTEES OF THE BOARD OF TRUSTEES

EXECUTIVE COMMITTEE

Robert E. Nanfelt, Chairman
Donald V. Seibert, Vice Chairman
Paul D. Glenn, Secretary
Rexford A. Boda
Paul Hazlett
David L. Rambo
Robert Sanford
Peter Dys

COMMITTEE ON ACADEMIC AFFAIRS, NYACK COLLEGE

Walter J. Helsing - Chairman
Paul D. Glenn
Cornelius W. Clarke

COMMITTEE ON ACADEMIC AFFAIRS - ATS

David L. Rambo - Chairman
Richard W. Bailey
Rockwell L. Dillaman

COMMITTEE ON BUDGET AND FINANCE

Ronald E. Eastman - Chairman
Peter Dys
Robert E. Nanfelt
Duane Wheeland

COMMITTEE ON BUILDINGS AND GROUNDS

Joseph E. Bersche - Chairman
Woodford Stemple
Ronald Wilson

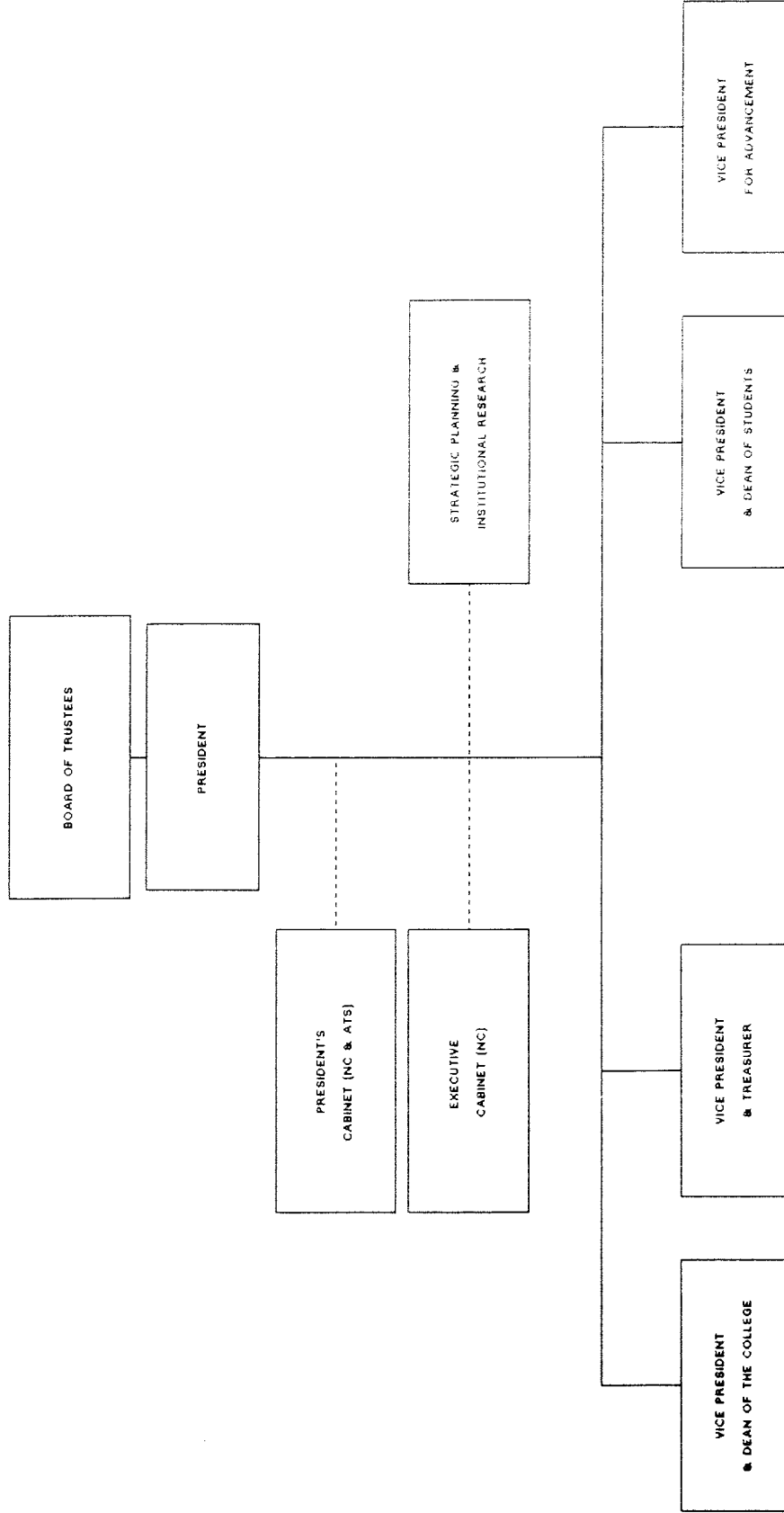
COMMITTEE ON PROMOTION & DEVELOPMENT

James Gilbert, Chairman
Robert Sanford
Donald V. Seibert

COMMITTEE ON SPIRITUAL & STUDENT AFFAIRS

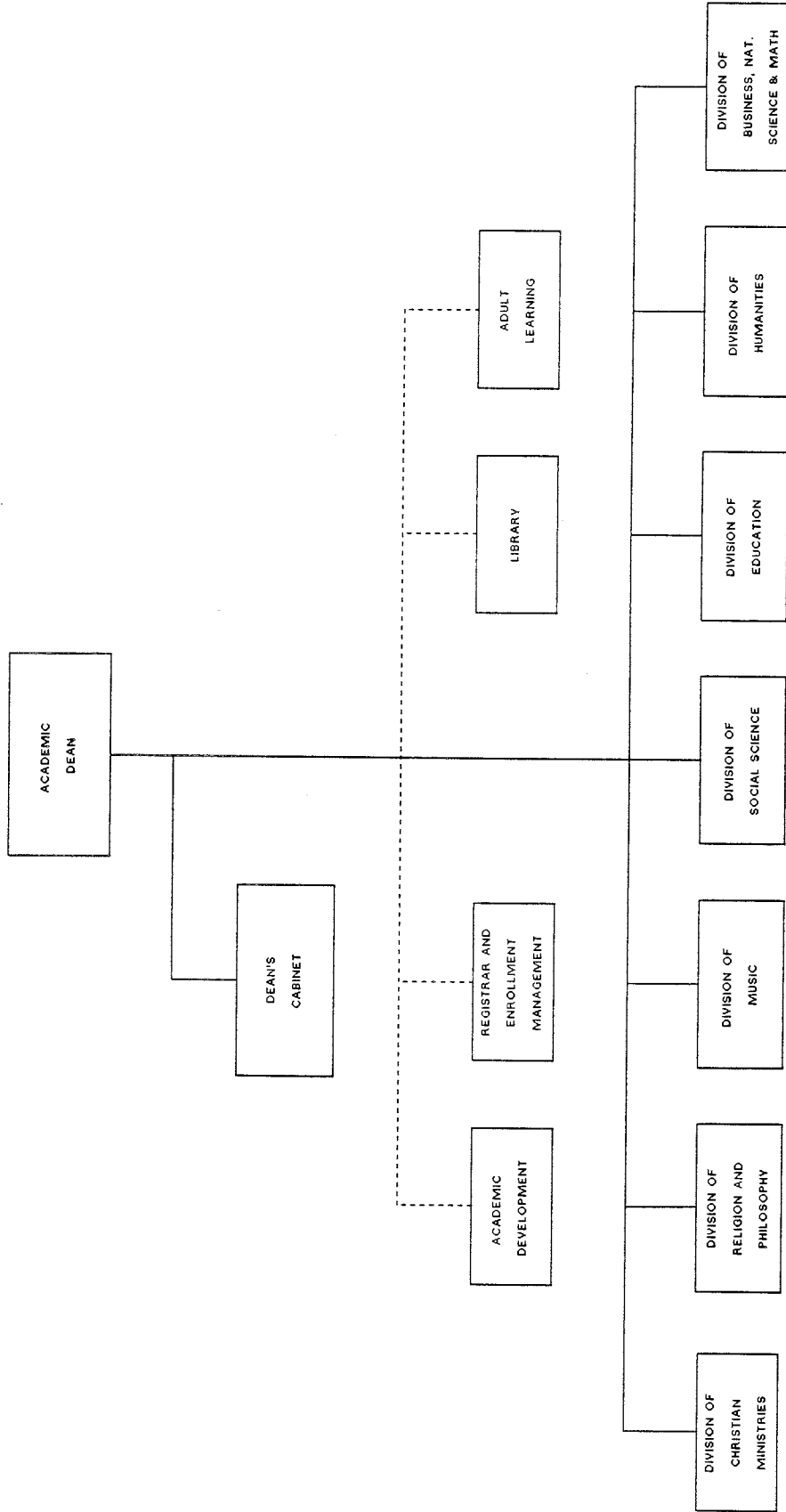
Dahl B. Seckinger - Chairman
Paul Hazlett
David K. Muir
Donald Paine

NYACK COLLEGE CENTRAL ADMINISTRATION



Solid line = Line position
Dotted line = Staff position

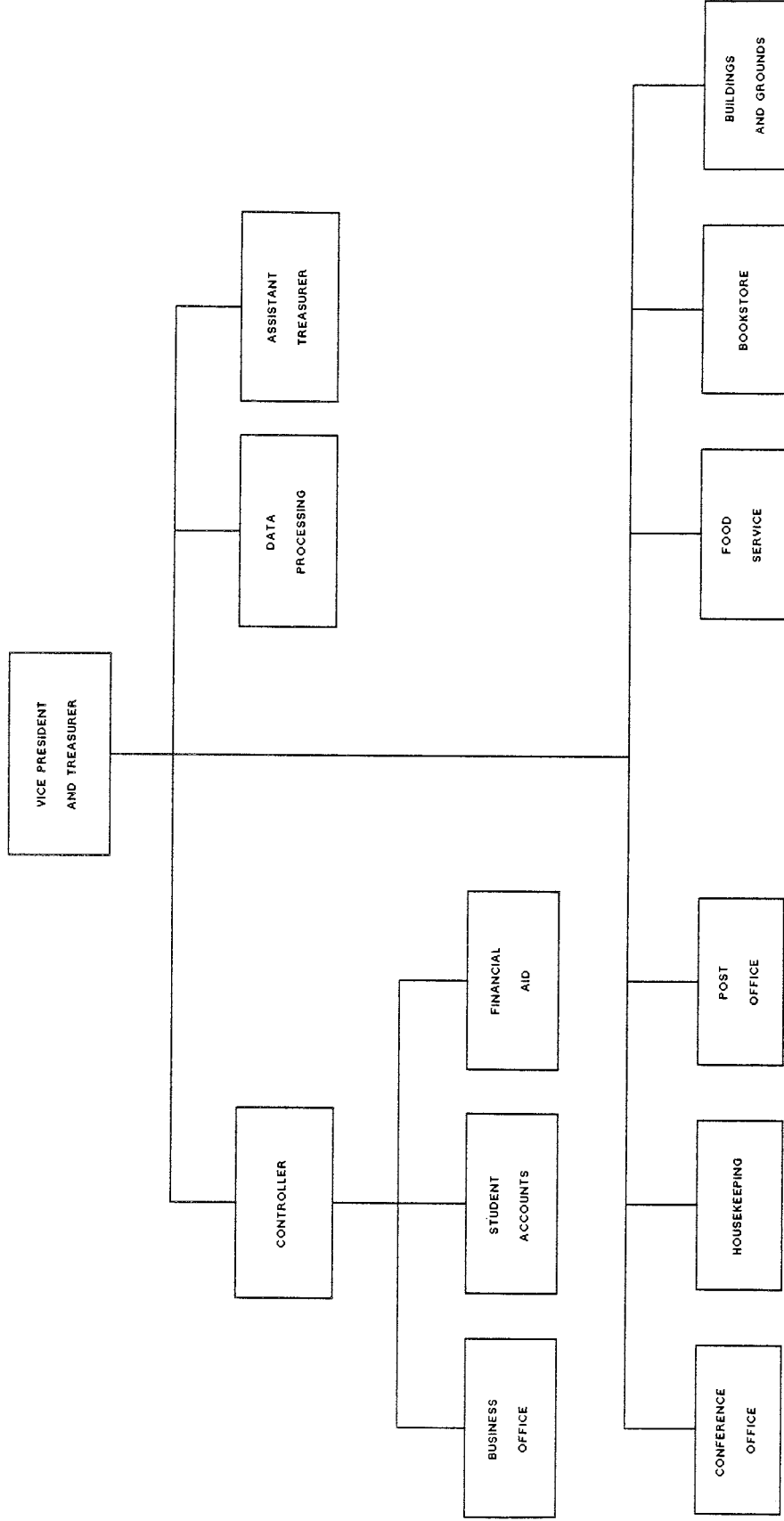
NYACK COLLEGE ACADEMIC AFFAIRS



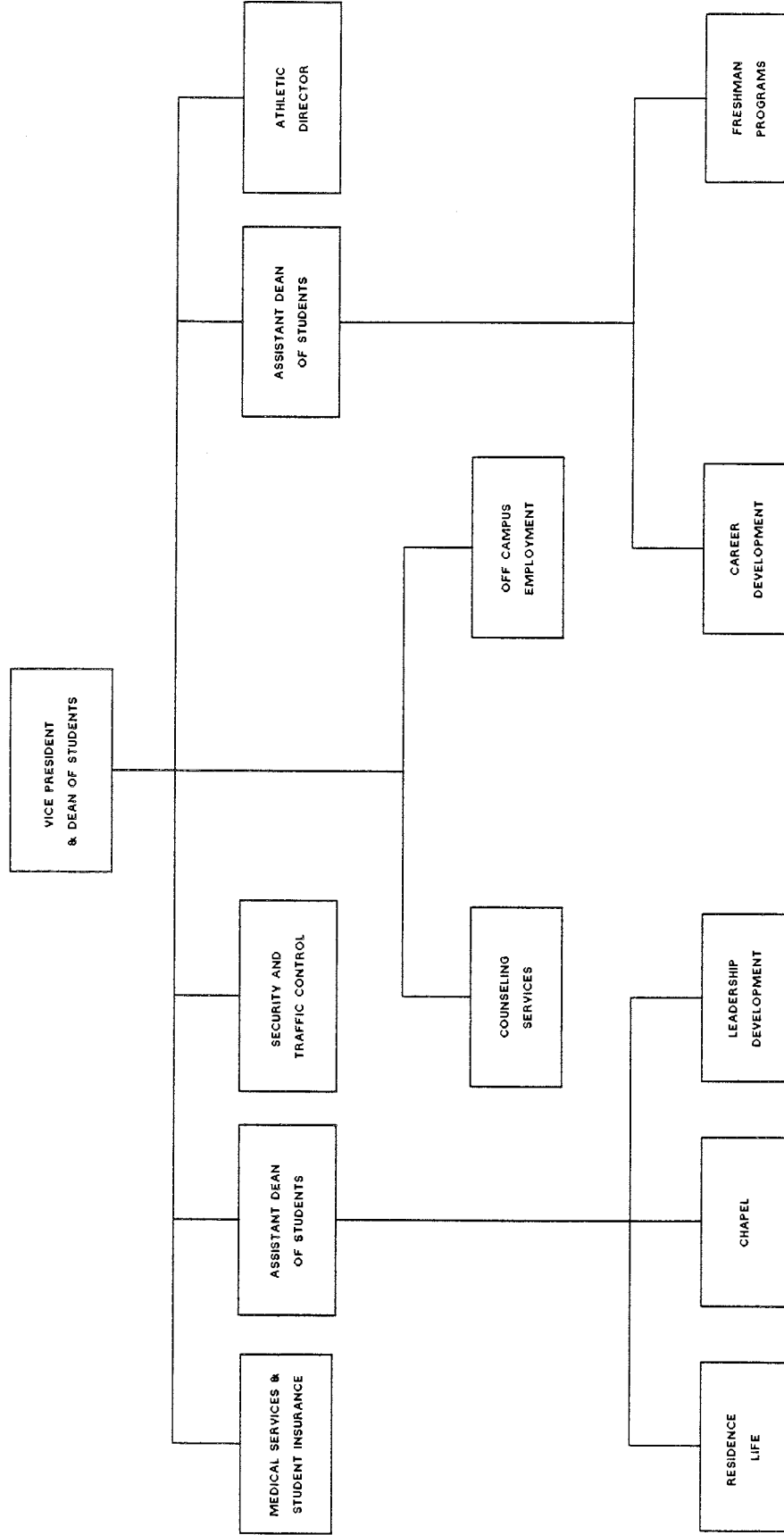
Solid line = Academic Divisions
Dotted line = staff support

Prepared by Ron Rueggeger

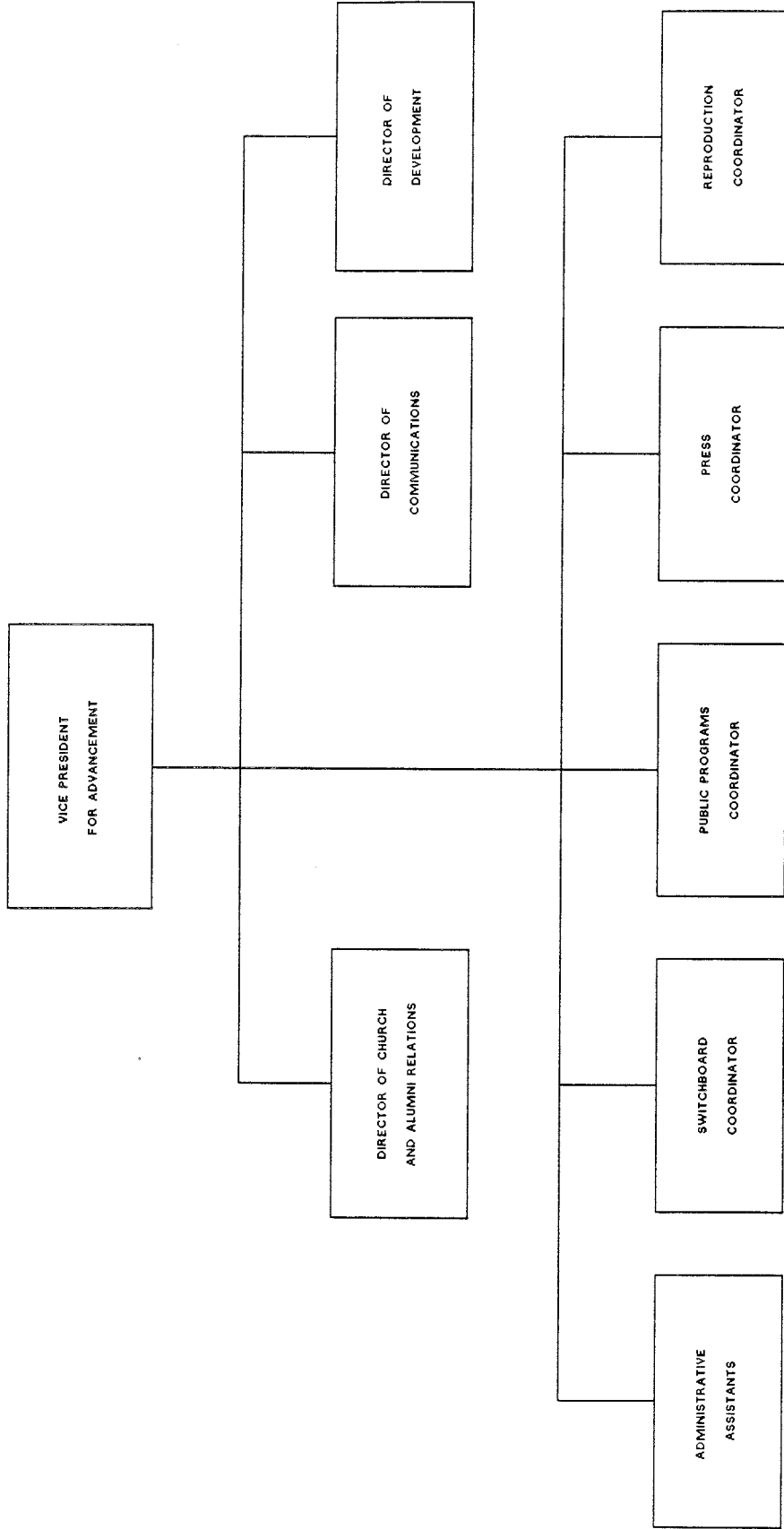
NYACK COLLEGE FINANCE



NYACK COLLEGE STUDENT DEVELOPMENT



NYACK COLLEGE ADVANCEMENT



**S
T
U
D
E
N
T
S**

ENROLLMENT SUMMARY

The number of students enrolled at Nyack College decreased during the mid-1980's. Since 1985 in which Nyack experienced its lowest enrollment there has been a slow upward trend. Most notably during this last year, 1989 there has been increasing numbers of students. Enrollment increased 14% between the Fall of 1985 and the Fall of 1989 and totalled 591 students for the Fall of 1989. The New Adult Degree Program is accountable for 6% of the increase.

FTE has followed a similiar trend with that of headcount. There has been a 9% increase since 1985, with the largest increase occurring this past year. (Fall FTE for 1985 = 508.8, Fall FTE for 1989 = 559.3)

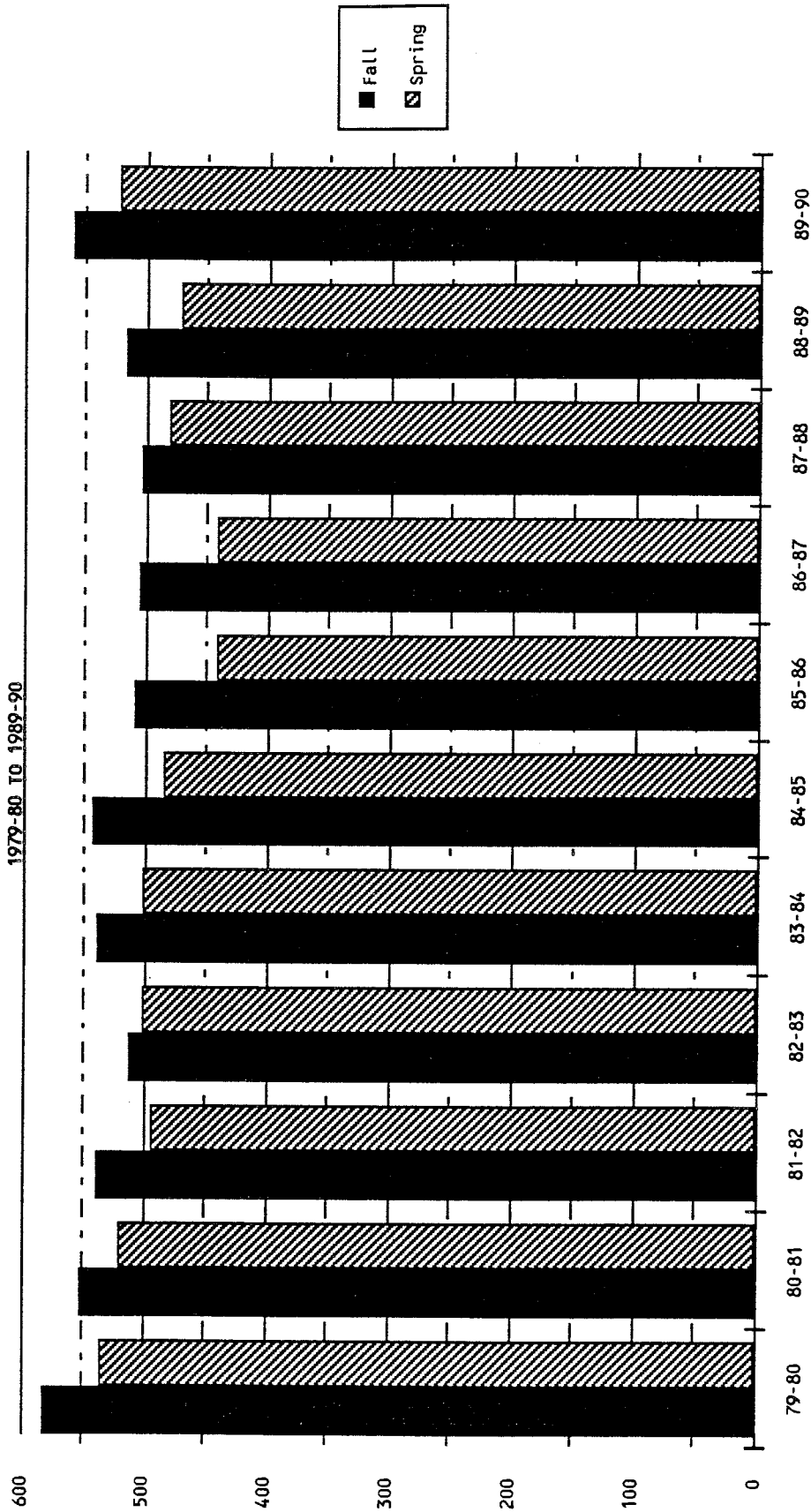
Headcount					FTE*
Fall	Nyack	Campus Ext.	Sites Adult Pro.	Total	
1980	561		13	574	551.8
1981	569		33	602	538.4
1982	519		33	552	513.3
1983	544		28	572	540.2
1984	530		39	569	542.3
1985	477		34	511	508.8
1986	490		29	519	504.9
1987	511		35	546	503.1
1988	514		30	544	516
1989	540		18	591	559.3**

*(Includes extensions)

** (Includes extensions & Adult Program)

FTE ENROLLMENT

Full-Time Equivalency

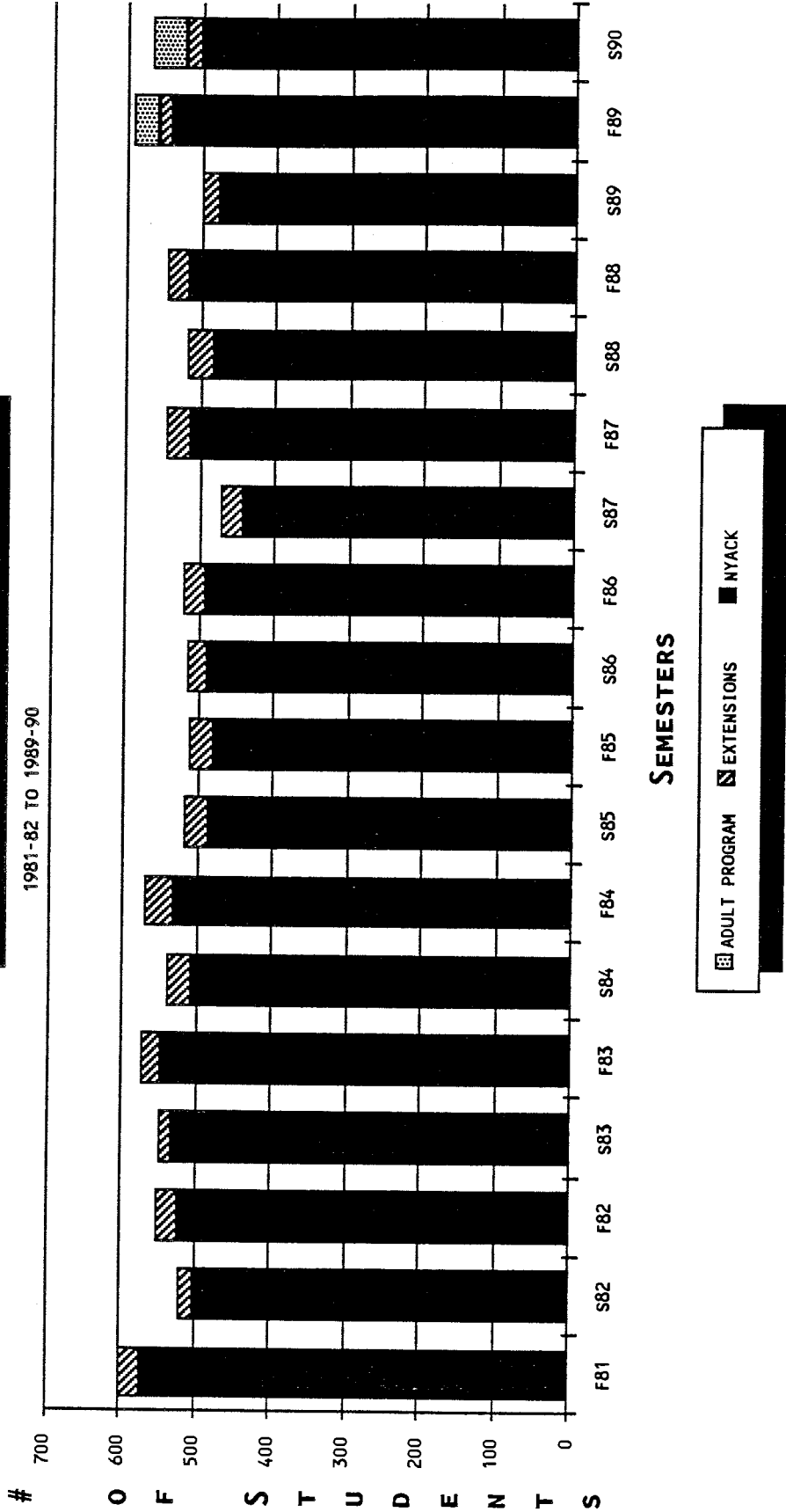


Semesters

Adult Program included as of 1989-90
Extension Sites included

HEAD COUNT ENROLLMENT

1981-82 TO 1989-90



1989 FALL ENROLLMENT FOR THE ADULT PROGRAMS

All students enrolled are full-time, senior class status, and are majors in Organizational Management. Cohorts 1 and 2 are included in the data below.

Additionally, there is a list of the number of students in each cohort that has been established during 1989-90.

Enrollment by Gender		
Male	14	42%
Female	19	58%
Total	33	100%

Marital Status		
Single	7	21%
Married	26	79%
Total	33	100%

Enrollment by Race		
Black Non-Hispanic	5	15%
Hispanic	2	6%
Asian American	1	3%
White Non-Hispanic	25	76%
Total	33	100%

Denominational Preference		
Assembly of God	1	3%
C & MA	6	18%
Catholic	6	18%
Episcopal	1	3%
Jewish	2	6%
Methodist	1	3%
Non-Denominational	2	6%
Salvation Army	4	12%
None	10	30%
Total	33	100%

Enrollment by Age		
25-29 yrs.	5	15%
30-34 yrs.	6	18%
35-39 yrs.	7	21%
40-44 yrs.	6	18%
45-49 yrs.	5	15%
50-54 yrs.	2	6%
55-59 yrs.	2	6%
Total	33	100%

Number of students	
Cohort 1	15
Cohort 2	10
Cohort 3	14
Cohort 4	11
Cohort 5	8
Cohort 6	10
Cohort 7	10
Cohort 8	15
Total	93

Source: Adult Program
IR/kf
Aug-90

ENROLLMENT BY STATE OF ORIGIN

Approximately 50% of our student population continues to be classified as residents of New York State. For the Fall of 1989 55% of the students were from within the state, compared to 48.5% in the Fall of 1977.

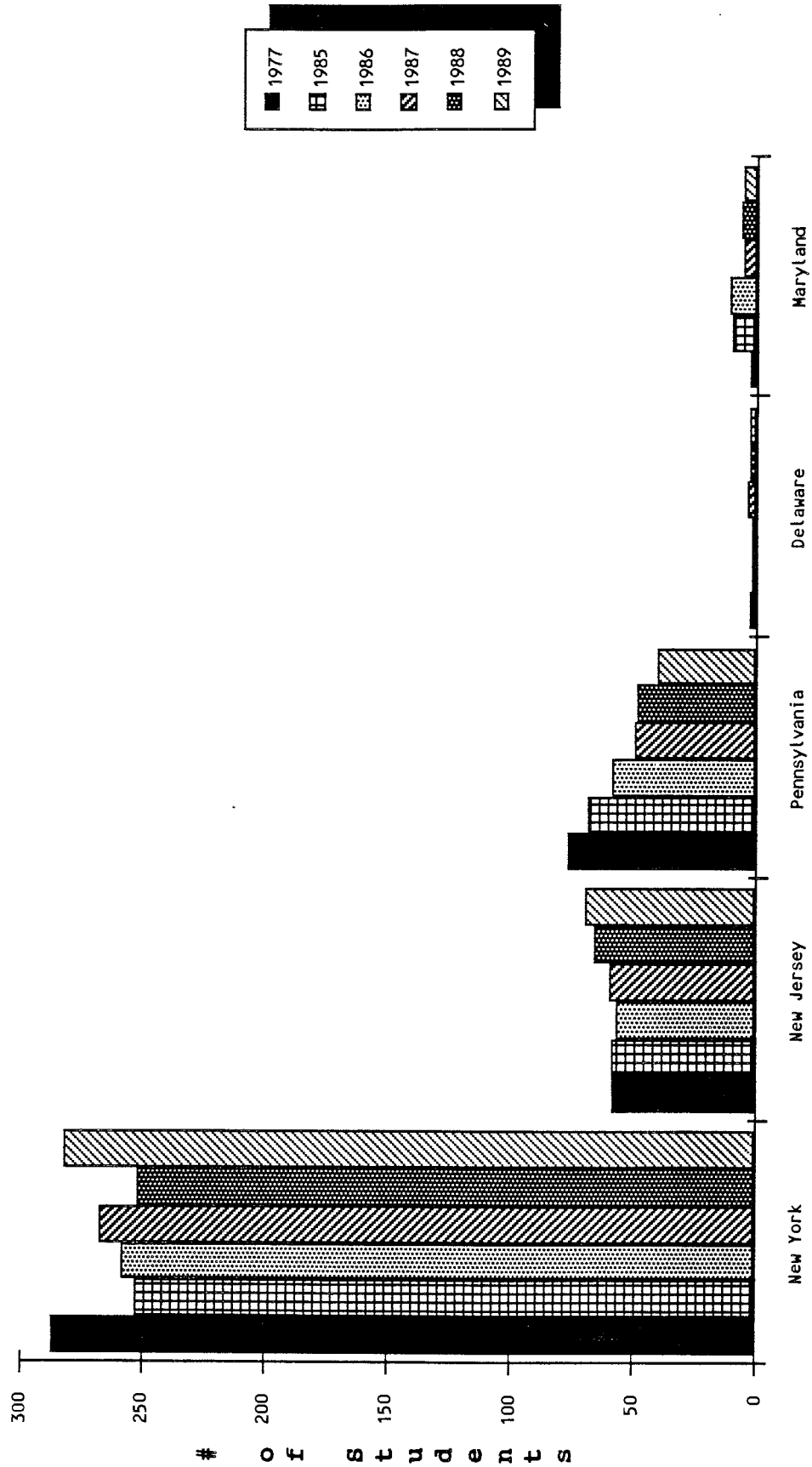
New Jersey and Pennsylvania contribute approximately 20 to 25% of our students. The numbers of students from New Jersey have been gradually increasing since 1977 and the numbers of students from Pennsylvania have been gradually increasing. (NJ increased 3.7, PA decreased 5.2 from 1977 to 1989)

The state that is the next largest contributor of students is Ohio. Approximately 5 to 6% of Nyack students are classified as Ohio residents.

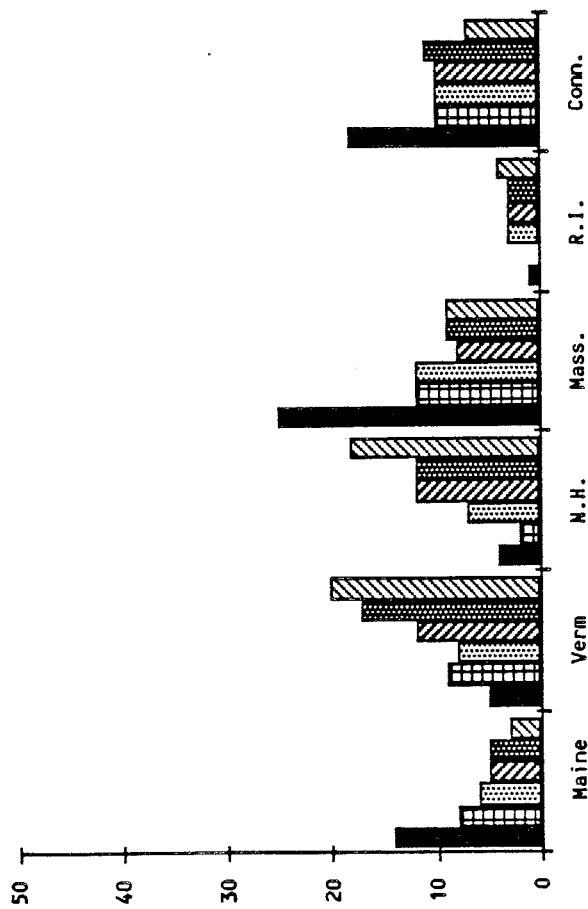
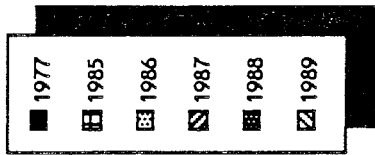
	77-78		85-86		86-87		87-88		88-89		89-90	
	#	%	#	%	#	%	#	%	#	%	#	%
=====	=====	=====	=====	=====	=====	=====	=====	=====	=====	=====	=====	=====
NEW YORK	287	48.5%	253	50.0%	258	50.0%	267	52.3%	252	49.3%	282	55.2%
OTHER MID-ATLANTIC												
New Jersey	58	9.8%	58	11.5%	57	11.0%	59	11.5%	66	12.9%	69	13.5%
Pennsylvania	77	13.0%	68	13.4%	58	11.2%	49	9.6%	48	9.4%	40	7.8%
Delaware	3	0.5%	2	0.4%	2	0.4%	4	0.8%	3	0.6%	3	0.6%
Maryland	3	0.5%	10	2.0%	11	2.1%	6	1.2%	7	1.4%	6	1.2%
NEW ENGLAND												
Maine	14	2.4%	8	1.6%	6	1.2%	5	1.0%	5	1.0%	3	0.6%
Vermont	5	0.8%	9	1.8%	8	1.6%	12	2.3%	17	3.3%	20	3.9%
New Hampshire	4	0.7%	2	0.4%	7	1.4%	12	2.3%	12	2.3%	18	3.5%
Massachusetts	25	4.2%	12	2.4%	12	2.3%	8	1.6%	9	1.8%	9	1.8%
Rhode Island	1	0.2%	0	0.0%	3	0.6%	3	0.6%	3	0.6%	4	0.8%
Connecticut	18	3.0%	10	2.0%	10	1.9%	10	2.0%	11	2.2%	7	1.4%
MID-WEST												
Ohio	39	6.6%	25	4.9%	25	4.8%	28	5.5%	28	5.5%	29	5.7%
Illinois	5	0.8%	2	0.4%	1	0.2%	1	0.2%	1	0.2%	1	0.2%
Indiana	3	0.5%	1	0.2%	2	0.4%	1	0.2%	0	0.0%	2	0.4%
Michigan	2	0.3%	8	1.6%	4	0.8%	3	0.6%	1	0.2%	0	0.0%
Minnesota	0	0.0%	0	0.0%	0	0.0%	2	0.4%	1	0.2%	2	0.4%
West Virginia	3	0.5%	4	0.8%	4	0.8%	2	0.4%	1	0.2%	1	0.2%
SOUTH												
Alabama	1	0.2%		0.0%	1	0.2%	1	0.2%	1	0.2%	1	0.2%
Florida	14	2.4%	9	1.8%	10	1.9%	8	1.6%	15	2.9%	17	3.3%
Georgia	0	0.0%	2	0.4%	1	0.2%	1	0.2%	2	0.4%	5	1.0%
Kentucky	1	0.2%	1	0.2%	1	0.2%	1	0.2%	0	0.0%	0	0.0%
North Carolina	8	1.4%	4	0.8%	4	0.8%	5	1.0%	6	1.2%	4	0.8%
South Carolina	0	0.0%	0	0.0%	1	0.2%	0	0.0%	2	0.4%	1	0.2%
Tennessee	0	0.0%	0	0.0%	0	0.0%	1	0.2%	1	0.2%	0	0.0%
Virginia	5	0.8%	8	1.6%	6	1.2%	8	1.6%	6	1.2%	4	0.8%
WEST												
California	2	0.3%	0	0.0%	1	0.2%	2	0.4%	3	0.6%	3	0.6%
Washington		0.0%	0	0.0%	2	0.4%	2	0.4%	2	0.4%	1	0.2%
Other	4	0.7%	4	0.8%	1	0.2%	4	0.8%	10	2.0%	7	1.4%
INTERNATIONAL	10	1.7%	6	1.2%	20	3.9%	6	1.2%	1	0.2%	1	0.2%
=====	=====	=====	=====	=====	=====	=====	=====	=====	=====	=====	=====	=====
TOTAL	592		506		516		511		514		540	

Source: Registrar's Office
 IR/kf
 Jun-90

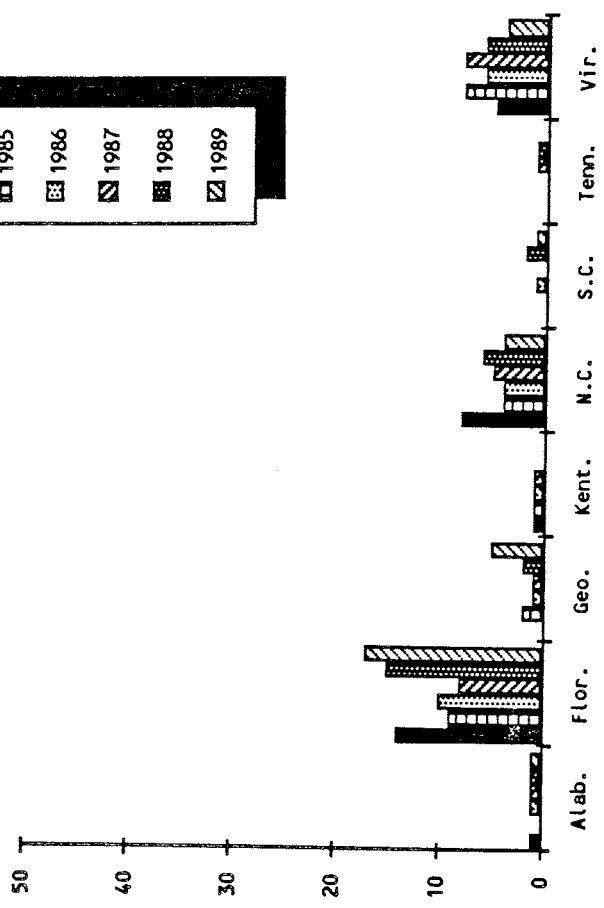
ENROLLMENT BY STATE OF ORIGIN



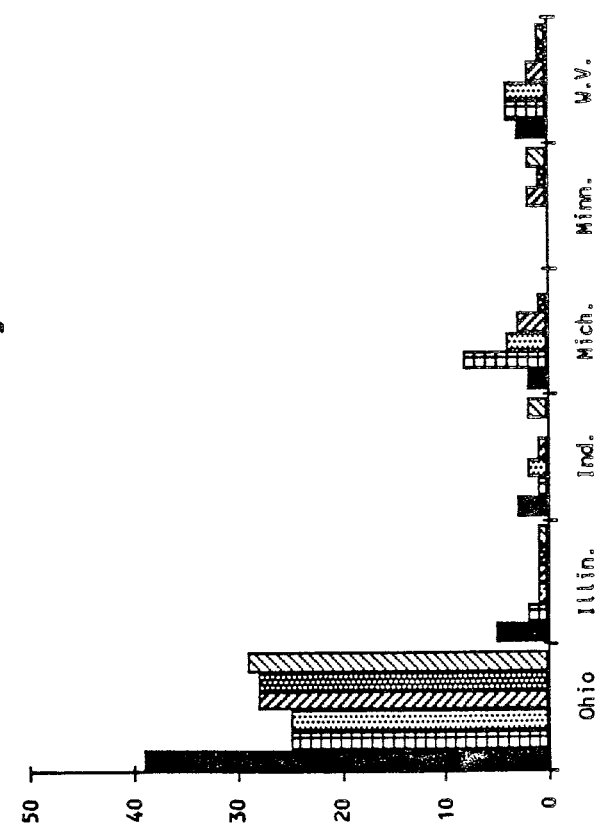
ENROLLMENT BY STATE OF ORIGIN



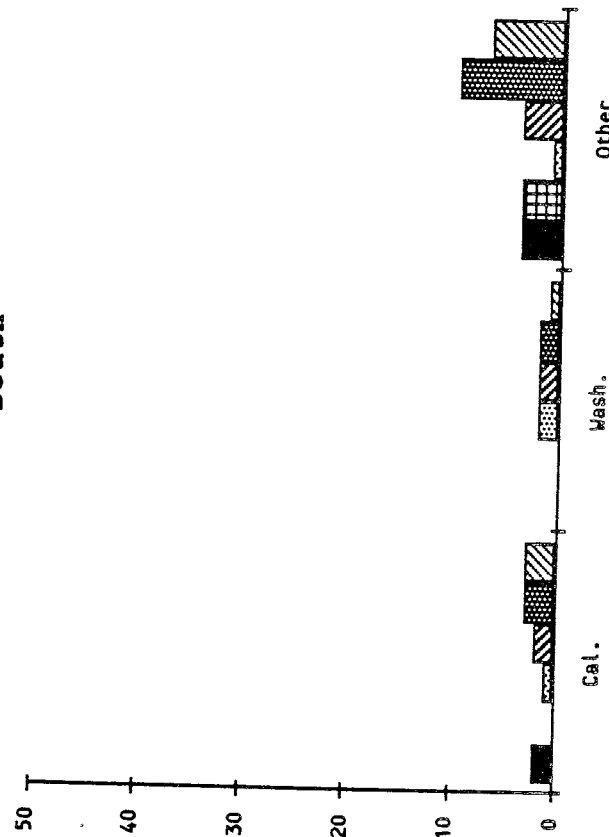
New England



South



Mid-west



of students

ENROLLMENT BY NEW YORK COUNTY

An average of 30% of Nyack's students are from Rockland County. (The % is based on the selected years shown below) Other counties that report the highest average percentages are Queens (8%), Brooklyn (6%), Bronx (6%), Westchester (5%), Suffolk (4%), and Manhattan (3%).

	83-84	%	85-86	%	86-87	%	87-88	%	88-89	%	89-90	%
Albany	1	0.4%	0	0.0%			3	1.0%	4	1.7%	1	0.4%
Allegany	4	1.7%	3	1.3%			1	0.3%	2	0.8%	1	0.4%
Broome	3	1.2%	4	1.7%			5	1.7%	4	1.7%	5	2.1%
Cattaraugus	0	0.0%	0	0.0%			0	0.0%	0	0.0%	0	0.0%
Cayuga	1	0.4%	0	0.0%			2	0.7%	1	0.4%	1	0.4%
Chautauqua	5	2.1%	1	0.4%			1	0.3%	1	0.4%	1	0.4%
Chemung	6	2.5%	2	0.9%			1	0.3%	1	0.4%	1	0.4%
Chenango	2	0.8%	3	1.3%			4	1.4%	3	1.3%	4	1.7%
Clinton	1	0.4%	0	0.0%			0	0.0%	0	0.0%	0	0.0%
Columbia	3	1.2%	3	1.3%			4	1.4%	3	1.3%	2	0.8%
Cortland	0	0.0%	0	0.0%			0	0.0%	0	0.0%	2	0.8%
Delaware	5	2.1%	0	0.0%			2	0.7%	3	1.3%	3	1.3%
Dutchess	3	1.2%	4	1.7%			4	1.4%	5	2.1%	3	1.3%
Erie	4	1.7%	3	1.3%			4	1.4%	7	2.9%	10	4.2%
Essex	0	0.0%	0	0.0%			0	0.0%	1	0.4%	0	0.0%
Franklin	0	0.0%	0	0.0%			0	0.0%	0	0.0%	0	0.0%
Fulton	4	1.7%	1	0.4%			0	0.0%	1	0.4%	0	0.0%
Genesee	0	0.0%	1	0.4%			0	0.0%	0	0.0%	0	0.0%
Greene	1	0.4%	1	0.4%			1	0.3%	2	0.8%	0	0.0%
Hamilton	0	0.0%	1	0.4%			0	0.0%	0	0.0%	0	0.0%
Herkimer	1	0.4%	4	1.7%			7	2.4%	7	2.9%	6	2.5%
Jefferson	1	0.4%	2	0.9%			3	1.0%	1	0.4%	1	0.4%
Lewis	0	0.0%	0	0.0%			0	0.0%	0	0.0%	0	0.0%
Livingston	0	0.0%	0	0.0%			0	0.0%	0	0.0%	0	0.0%
Madison	0	0.0%	0	0.0%			0	0.0%	0	0.0%	0	0.0%
Monroe	1	0.4%	4	1.7%			3	1.0%	2	0.8%	1	0.4%
Montgomery	1	0.4%	1	0.4%			2	0.7%	2	0.8%	3	1.3%
Nassau	5	2.1%	3	1.3%			6	2.1%	8	3.3%	5	2.1%
New York												
Manhattan	13	5.4%	8	3.5%			8	2.8%	8	3.3%	4	1.7%
Bronx	8	3.3%	15	6.6%			21	7.3%	10	4.2%	15	6.3%
Brooklyn	10	4.1%	13	5.7%			20	7.0%	15	6.3%	17	7.1%
Queens	12	5.0%	12	5.2%			27	9.4%	15	6.3%	38	15.9%
Richmond	1	0.4%	4	1.7%			8	2.8%	6	2.5%	8	3.3%
Niagara	1	0.4%	1	0.4%			0	0.0%	0	0.0%	2	0.8%
Oneida	5	2.1%	4	1.7%			4	1.4%	5	2.1%	5	2.1%
Onondaga	2	0.8%	2	0.9%			8	2.8%	8	3.3%	8	3.3%
Ontario	1	0.4%	1	0.4%			0	0.0%	0	0.0%	0	0.0%
Orange	6	2.5%	9	3.9%			11	3.8%	5	2.1%	1	0.4%
Orleans	0	0.0%	0	0.0%			0	0.0%	0	0.0%	0	0.0%
Oswego	6	2.5%	3	1.3%			3	1.0%	5	2.1%	8	3.3%
Otsego	2	0.8%	1	0.4%			0	0.0%	0	0.0%	0	0.0%
Putnam	2	0.8%	0	0.0%			0	0.0%	1	0.4%	1	0.4%
Rensselaer	2	0.8%	1	0.4%			1	0.3%	1	0.4%	1	0.4%
Rockland	81	33.6%	70	30.6%			94	32.8%	70	29.3%	61	25.5%
St. Lawrence	0	0.0%	5	2.2%			0	0.0%	0	0.0%	0	0.0%
Saratoga	3	1.2%	1	0.4%			2	0.7%	2	0.8%	1	0.4%
Schenectady	1	0.4%	0	0.0%			2	0.7%	2	0.8%	2	0.8%
Schoharie	1	0.4%	1	0.4%			0	0.0%	0	0.0%	0	0.0%

	83-84	%	85-86	%	86-87	%	87-88	%	88-89	%	89-90	%
Schuyler	0	0.0%	0	0.0%			1	0.3%	0	0.0%	0	0.0%
Seneca	0	0.0%	0	0.0%			0	0.0%	0	0.0%	0	0.0%
Steuben	3	1.2%	1	0.4%			1	0.3%	0	0.0%	1	0.4%
Suffolk	6	2.5%	10	4.4%			7	2.4%	9	3.8%	10	4.2%
Sullivan	3	1.2%	2	0.9%			2	0.7%	1	0.4%	1	0.4%
Tioga	0	0.0%	3	1.3%			0	0.0%	0	0.0%	0	0.0%
Tompkins	0	0.0%	2	0.9%			2	0.7%	1	0.4%	1	0.4%
Ulster	2	0.8%	2	0.9%			1	0.3%	3	1.3%	2	0.8%
Warren	1	0.4%	4	1.7%			2	0.7%	1	0.4%	0	0.0%
Washington	2	0.8%	0	0.0%			0	0.0%	0	0.0%	0	0.0%
Wayne	1	0.4%	0	0.0%			1	0.3%	1	0.4%	0	0.0%
Westchester	14	5.8%	13	5.7%			8	2.8%	12	5.0%	8	3.3%
Wyoming	0	0.0%	0	0.0%			0	0.0%	0	0.0%	0	0.0%
Yates	0	0.0%	0	0.0%			0	0.0%	0	0.0%	0	0.0%
TOTALS	241		229				287		239		245	

Note: Data from 1986-87 was not available

Source: Registrar's Office
IR/kf

May-90

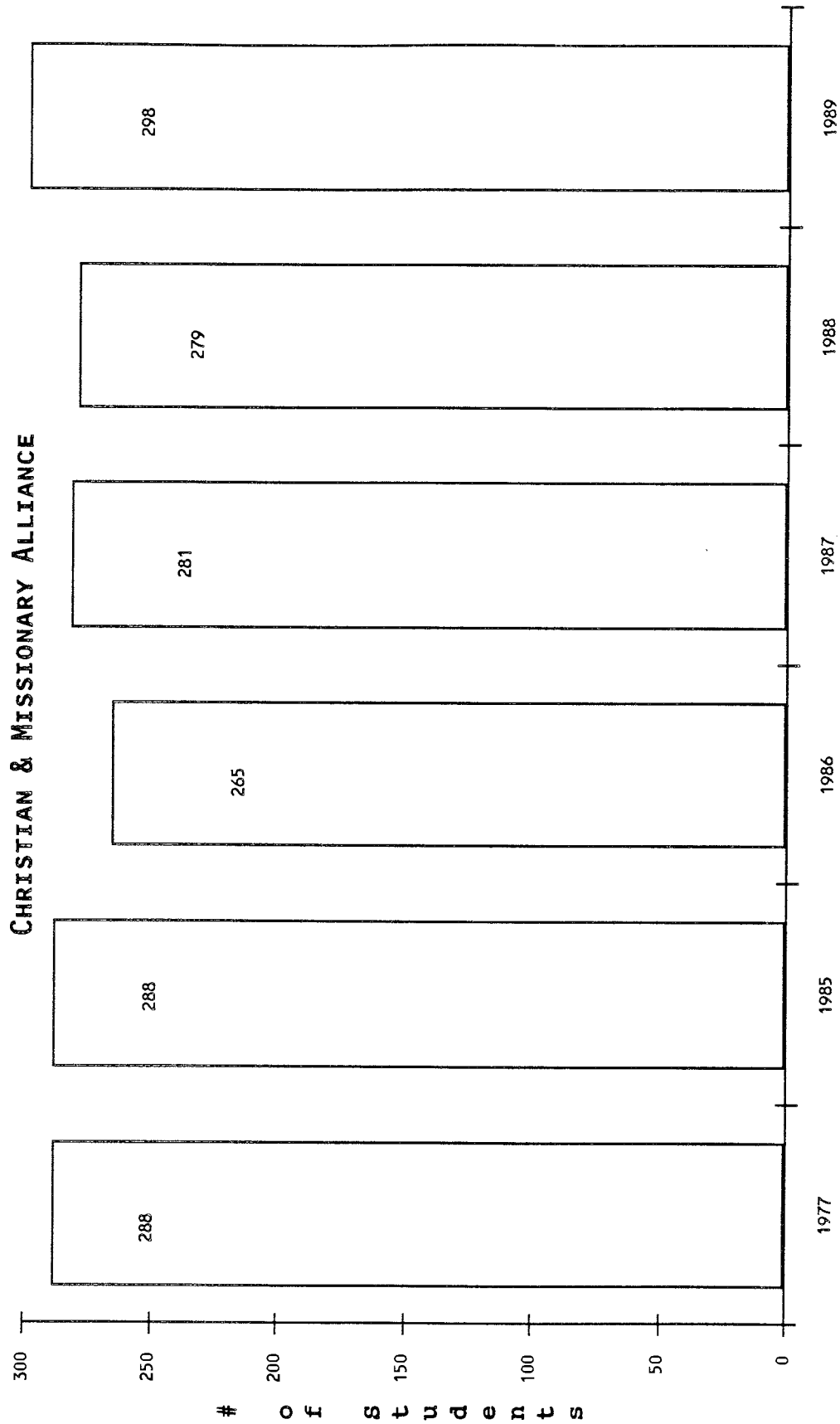
ENROLLMENT BY DENOMINATIONAL AFFILIATION

	77 - 78		85 - 86		86 - 87		87 - 88		88 - 89		88 - 89	
	#	%	#	%	#	%	#	%	#	%	#	%
C & M A	288	48.0%	288	56.4%	265	51.3%	281	55.1%	279	54.7%	298	58.4%
Assemblies of God	15	2.5%	10	2.0%	11	2.1%	14	2.7%	17	3.3%	22	4.3%
Baptist	61	10.2%	56	11.0%	59	11.4%	46	9.0%	47	9.2%	54	10.6%
Bible Fellowship	0	0.0%	0	0.0%	3	0.6%	3	0.6%	2	0.4%	0	0.0%
Brethren	4	0.7%	2	0.4%	2	0.4%	1	0.2%	0	0.0%	0	0.0%
Christian Church	1	0.2%	2	0.4%	2	0.4%	1	0.2%	1	0.2%	2	0.4%
Christian Reformed	2	0.3%	2	0.4%	4	0.8%	2	0.4%	4	0.8%	1	0.2%
Church of God	1	0.2%	1	0.2%	2	0.4%	2	0.4%	2	0.4%	1	0.2%
Congregational	5	0.8%	2	0.4%	3	0.6%	4	0.8%	2	0.4%	2	0.4%
Conservative Baptist	5	0.8%	5	1.0%	7	1.4%	4	0.8%	2	0.4%	3	0.6%
Episcopal	1	0.2%	1	0.2%	1	0.2%	2	0.4%	1	0.2%	0	0.0%
Evangelical	7	1.2%	0	0.0%	0	0.0%	0	0.0%	0	0.0%	0	0.0%
Evangelical Free	15	2.5%	13	2.5%	16	3.1%	15	2.9%	13	2.5%	20	3.9%
Free Methodist	0	0.0%	0	0.0%	2	0.4%	1	0.2%	0	0.0%	0	0.0%
Friends	0	0.0%	0	0.0%	0	0.0%	1	0.2%	1	0.2%	1	0.2%
Full Gospel	2	0.3%	1	0.2%	1	0.2%	1	0.2%	1	0.2%	0	0.0%
Holiness	1	0.2%	0	0.0%	0	0.0%	1	0.2%	1	0.2%	1	0.2%
Independent	15	2.5%	10	2.0%	7	1.4%	6	1.2%	8	1.6%	13	2.5%
Independent Baptist	0	0.0%	2	0.4%	2	0.4%	2	0.4%	0	0.0%	0	0.0%
Inter-Denominational	1	0.2%	0	0.0%	0	0.0%	0	0.0%	1	0.2%	2	0.4%
Lutheran	3	0.5%	2	0.4%	2	0.4%	2	0.4%	2	0.4%	2	0.4%
Methodist	12	2.0%	10	2.0%	12	2.3%	6	1.2%	5	1.0%	5	1.0%
Nazarene	6	1.0%	1	0.2%	2	0.4%	2	0.4%	2	0.4%	1	0.2%
New Testament	0	0.0%	0	0.0%	1	0.2%	1	0.2%	1	0.2%	1	0.2%
Non-Denominational	94	15.7%	45	8.8%	43	8.3%	51	10.0%	45	8.8%	40	7.8%
Orthodox	0	0.0%	0	0.0%	0	0.0%	1	0.2%	0	0.0%	0	0.0%
Pentecostal	13	2.2%	16	3.1%	13	2.5%	15	2.9%	19	3.7%	19	3.7%
Presbyterian	24	4.0%	16	3.1%	14	2.7%	16	3.1%	16	3.1%	27	5.3%
Protestant	2	0.3%	0	0.0%	0	0.0%	0	0.0%	3	0.6%	3	0.6%
Reformed Church	4	0.7%	1	0.2%	3	0.6%	2	0.4%	1	0.2%	0	0.0%
Roman Catholic	0	0.0%	0	0.0%	4	0.8%	1	0.2%	1	0.2%	0	0.0%
Salvation Army	0	0.0%	2	0.4%	1	0.2%	5	1.0%	3	0.6%	5	1.0%
Southern Baptist	1	0.2%	1	0.2%	1	0.2%	0	0.0%	1	0.2%	2	0.4%
United Missionary	0	0.0%	0	0.0%	0	0.0%	1	0.2%	1	0.2%	0	0.0%
United Methodist	9	1.5%	0	0.0%	0	0.0%	5	1.0%	5	1.0%	3	0.6%
United Presbyterian	2	0.3%	0	0.0%	0	0.0%	1	0.2%	1	0.2%	0	0.0%
Wesleyan	0	0.0%	1	0.2%	2	0.4%	1	0.2%	1	0.2%	3	0.6%
Undesignated	0	0.0%	16	3.1%	29	5.6%	13	2.5%	24	4.7%	8	1.6%
Other	6	1.0%	5	1.0%	3	0.6%	0	0.0%	1	0.2%	1	0.2%
TOTAL	=====		=====		=====		=====		=====		=====	
	600		511		517		510		514		540	

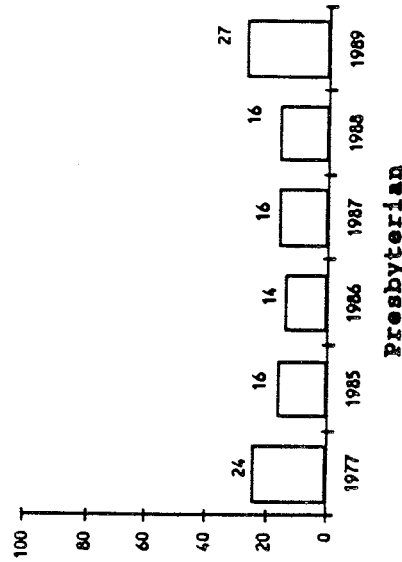
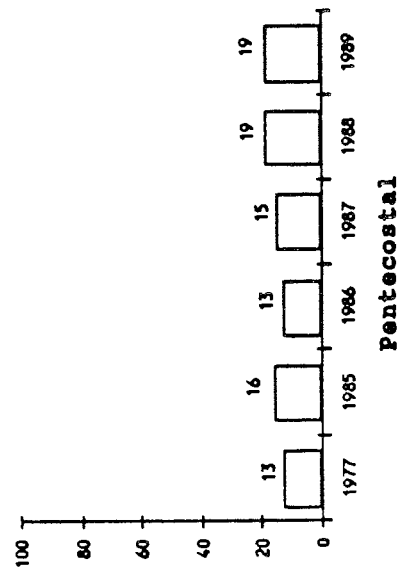
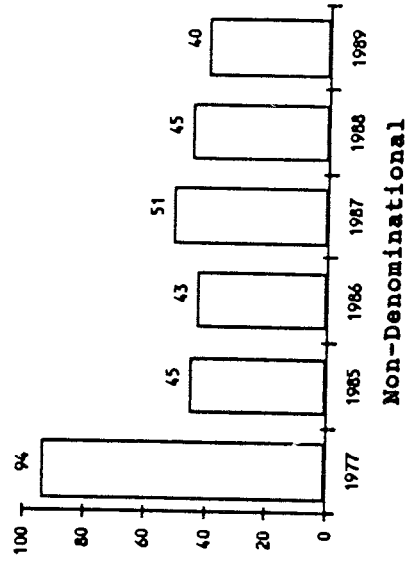
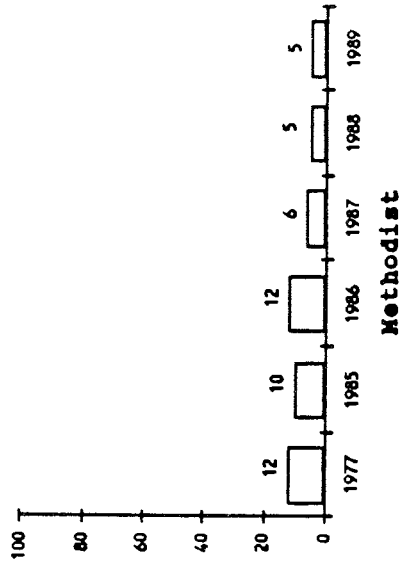
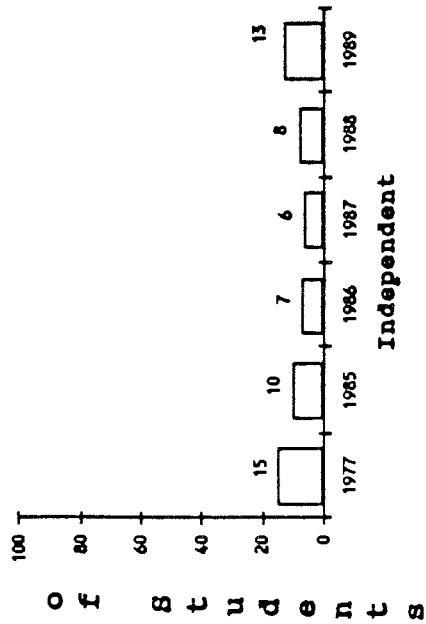
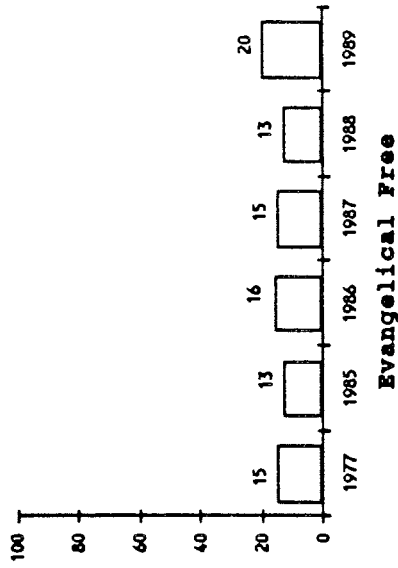
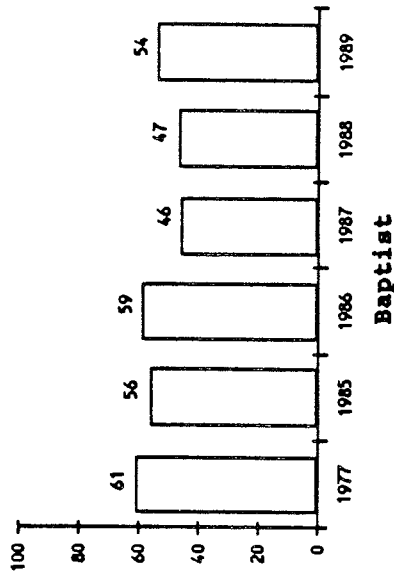
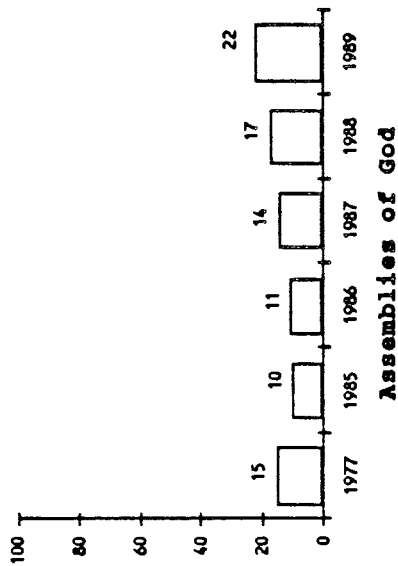
Source: Registrar's Office
IR/kf

May-90

ENROLLMENT BY DENOMINATIONAL AFFILIATION



ENROLLMENT BY DENOMINATIONAL AFFILIATION



of students

ENROLLMENT BY RACE AND GENDER

The student body of Nyack College is composed of 81% white students and 19% of minority students. The percentage of white students has decreased slightly over the past five years (84.1% in 1984 to 81.3% in 1988) while the percentage of minorities has slightly increased (14.7% in 1984 to 18.8% in 1988). The largest increase has been among Asian students, an increase of 2.4%. Black students have increased less than 1% since 1984.

There are generally more female students than male students. (53% female, 47% male) There are also considerably more single students (88%) compared to married students (12%). (Data based on 1984 to 1988 averages)

Enrollment by Race										
RACE	85-86		86-87		87-88		88-89		89-90	
	#	%	#	%	#	%	#	%	#	%
Black Non-Hispanic	25	5.2%	40	8.2%	32	6.3%	31	6.1%	32	6.3%
Hispanic	15	3.1%	20	4.1%	17	3.3%	20	3.9%	35	6.8%
Asian American	30	6.3%	29	5.9%	37	7.2%	45	8.8%	69	13.5%
White Non-Hispanic	405	84.9%	401	81.8%	420	82.2%	416	81.3%	404	78.9%
Non-Resident Alien	2	0.4%	0	0.0%	5	1.0%	0	0.0%	0	0.0%
TOTAL	<u>477</u>		<u>490</u>		<u>511</u>		<u>512</u>		<u>540</u>	

Source: Registrar's Office
IR/kf
Jun-90

Enrollment by Gender										
	85-86		86-87		87-88		88-89		89-90	
	#	%	#	%	#	%	#	%	#	%
Male	242	47%	239	51%	244	47%	212	41%	240	44%
Female	271	53%	230	49%	275	53%	303	59%	300	56%
Total	<u>513</u>		<u>469</u>		<u>519</u>		<u>515</u>		<u>540</u>	

Source: Registrar's Office
IR/kf
Jun-90

ENROLLMENT BY AGE AND MARITAL STATUS

ENROLLMENT BY AGE		85-86			86-87			87-88			88-89			89-90		
AGE DISTRIBUTION	M	F	%	M	F	%	M	F	%	M	F	%	M	F	%	
15-19	67	106	34%	48	113	34%	61	127	36%	29	63	18%	64	123	35%	
20-24	115	127	47%	114	65	38%	118	119	46%	133	199	64%	119	146	49%	
25-29	33	16	10%	34	22	12%	34	20	10%	24	22	9%	24	14	7%	
30-34	15	7	4%	25	7	7%	18	5	4%	14	6	4%	13	2	3%	
35+	12	15	5%	18	23	9%	13	4	3%	12	13	5%	20	15	6%	
	---	---	---	---	---	---	---	---	---	---	---	---	---	---	---	
	242	271		239	230		244	275		212	303		240	300		
	---	---		---	---		---	---		---	---		---	---		
	513			469			519			515			540			

NOTE: Percentages include the total of male and female in each age group.

Source: Registrar's Office
IR/kf
Jun-90

ENR-AGE

ENROLLMENT BY MARITAL STATUS		77-78		85-86		86-87		87-88		88-89		88-89	
MARITAL STATUS	M	F	M	F	M	F	M	F	M	F	M	F	
Married-Campus Housing	18	3	19	2	20	2	20	2	13	9	12	15	
Married-Commuter	32	13	20	19	19	23	21	17	11	13	26	9	
Total	50	16	39	21	39	25	41	19	24	22	38	24	
Total Married	66		60		64		60		46		62		
Single Resident	*	*	161	215	147	219	156	227	156	264	158	257	
Single-Commuter	*	*	18	23	25	35	29	39	14	16	40	23	
Total	*	*	179	238	172	254	185	266	170	280	198	280	
Total Single	*		417		426		451		450		478		
Total Married and Single	66		477		490		511		496		540		

Source: Registrar's Office & Dean of Student's Office
IR/kf
Aug-90

* Data not available

ANNUAL SUMMARY OF VOCATIONAL AND EDUCATION PREFERENCE

Approximately 60% of Nyack's students intend to pursue a church related vocation and 40% intend to pursue a non-church related vocation. (These figures are based on averaging data from the spring of 1978 to the spring of 1990) This trend has slowly been shifting to a higher percentage of students intending non-church related vocations. (1979 - Church related vocations = 61%, compared to 37% in 1990; 1979 - Non-church related vocations = 39%, compared to 59% in 1990)

For the past two years there has been a higher percentage of students intending non-church related vocations then students intending church related vocations (see graph on next page).

The largest changes have been an increase in Public Elementary Teachers (from 8% to 17%) and a decrease in the number of students planning on being Missionaries (from 16% to 9%).

CHURCH RELATED VOCATIONS

	1979	%	1986	%	1987	%	1988	%	1989	%	1990	%
Missionary	132	16%	85	20%	73	18%	71	16%	51	13%	33	9%
Pastor	101	12%	53	12%	53	13%	67	15%	34	9%	34	10%
Church Youth Worker	58	7%	27	6%	20	5%	22	5%	30	8%	18	5%
Music /Minister of Music	56	7%	22	5%	26	6%	25	6%	13	3%	11	3%
Missionary Teacher	40	5%	17	4%	14	3%	15	3%	18	5%	10	3%
Teacher (Christian School)	59	7%	15	4%	27	7%	30	7%	27	7%	23	7%
Director of Christian Ed	23	3%	5	1%	5	1%	10	2%	2	1%	1	0%
Other	32	4%	12	3%	4	1%	14	3%	4	1%	0	0%
	====	====	====	====	====	====	====	====	====	====	====	====
Total	501	61%	236	56%	222	55%	254	56%	179	47%	130	37%

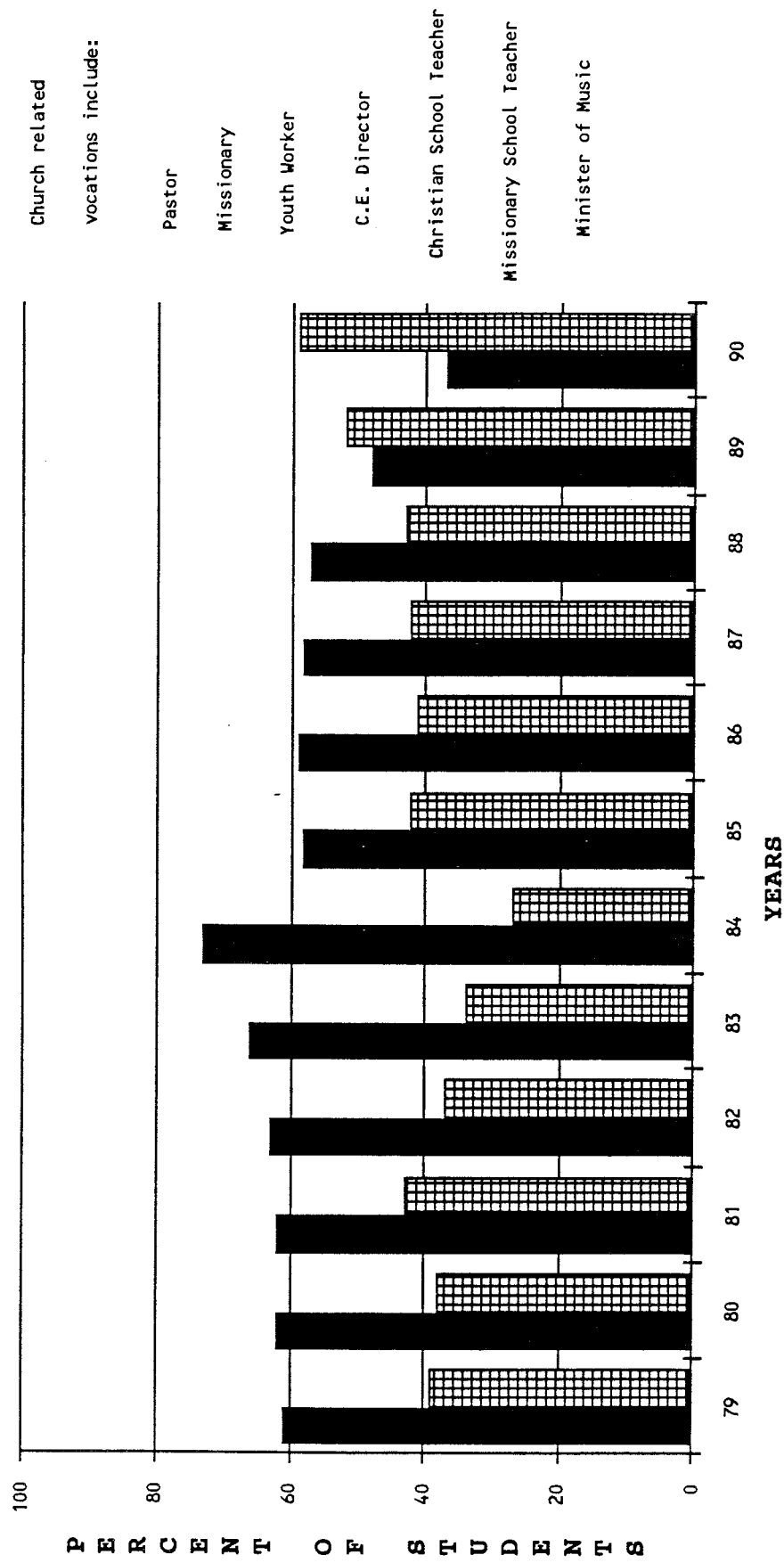
NON-CHURCH RELATED VOCATIONS

Psychological Counselor	61	7%	29	7%	25	6%	36	8%	27	7%	35	10%
Business Person	20	2%	22	5%	31	8%	30	7%	37	10%	26	7%
Social Worker	54	7%	13	3%	24	6%	26	6%	27	7%	21	6%
Public Elementary Teacher	65	8%	78	18%	41	10%	47	10%	50	13%	60	17%
Public Secondary Teacher	30	4%	2	0%	10	2%	15	3%	15	4%	19	5%
College Professor	30	4%	4	1%	10	2%	10	2%	6	2%	15	4%
Nurse	12	1%	0	0%	3	1%	5	1%	2	1%	3	1%
Lawyer	3	0%	6	1%	3	1%	4	1%	4	1%	2	1%
Other	51	6%	12	3%	13	3%	15	3%	24	6%	26	7%
	====	====	====	====	====	====	====	====	====	====	====	====
Total	326	39%	166	39%	160	40%	188	42%	192	50%	207	59%

Source: Academic Office
IR/kf
Aug-89

VOCATIONAL INTENTIONS

Church related
 Non-church related



Data based on spring survey of all Nyack students

FRESHMAN PROFILE
BY AVERAGE
SAT SCORE

	77-78	85-86	86-87	87-88	88-89	89-90
SAT SCORE						
Verbal	*	455	427	421	431	451
Math	*	450	435	450	464	449
Total	911	905	862	871	895	900

*Data unavailable

Source: Admissions Office
IR/kf
Aug-89

SAT.WK1

The National Teacher's Exam has been administered to graduating senior Elementary Education majors and Music Education majors seeking certification in New York State since 1983. Listed below are the obtained averages.

The scores over the past six years have remained relatively stable.

NATIONAL TEACHERS EXAMINATION
AVERAGES

	*PASSING SCORES	83-84	84-85	85-86	86-87	87-88	88-89
COMMUNICATION SKILLS	650	662 (+12)	665 (+15)	671 (+21)	663 (+13)	665 (+15)	664 (+14)
GENERAL KNOWLEDGE	648	654 (+6)	658 (+10)	667 (+19)	659 (+11)	660 (+12)	659 (+11)
PROFESSIONAL KNOWLEDGE	646	661 (+15)	657 (+11)	664 (+18)	659 (+13)	655 (+9)	658 (+12)

*Established by New York State

(The number in the parentheses indicates the difference from the passing score)

Scores for the 1989-90 school year are not available at this time

Source: Education Department
IR/kf
Jun-89

NTE-EXAM

RESULTS FROM MAJOR FIELD ACHIEVEMENT TESTS

		OVERALL MEASURES	NORMATIVE MEAN	NYACK COLLEGE MEAN	DIFFERENCE BETWEEN MEANS
=====		=====	=====	=====	=====
	OVERALL MEASURES	Total Score	161	158.7	-2.3
EDUCATION	ASSESSMENT INDICATORS	1. Educational Goals	47.1	38.8	-8.3
		2. Admin & Supervision of Schools	54.4	49.2	-5.2
		3. Curriculum Development/ Organization	52	52.3	0.3
		4. Teaching-Learning	52	56.5	4.5
		5. Evaluation and Research Appraisal	52.7	53	0.3
=====		=====	=====	=====	=====
	OVERALL MEASURES	Total Score	151	*158	7
HISTORY		Subscore 1: European History	51	*56.5	5.5
		Subscore 2: United States History	51	*59.5	8.5
=====		=====	=====	=====	=====
	OVERALL MEASURES	Total Score	157	162	8.5
LITERATURE	ASSESSMENT INDICATORS	1. English Literature to 1660	55	58.7	3.7
		2. English Literature 1660- 1914	47	54	7
		3. English Literature since 1914	43.7	42.7	-1
		4. American Literature	56.5	59	2.5
=====		=====	=====	=====	=====
	OVERALL MEASURES	Total Score	150	140.5	-9.5
MUSIC		Subscore 1: Theory	50	34.5	-15.5
		Subscore 2: History and Literature	50	46.5	-3.5
=====		=====	=====	=====	=====
	OVERALL MEASURES	Total Score	157	155	-2
PSYCHOLOGY		Subscore 1: Experimental	57	46.7	-10.3
		Subscore 2: Social	57	60	3
=====		=====	=====	=====	=====
	OVERALL MEASURES	Total Score	153	141.2	-11.8
SOCIOLOGY	ASSESSMENT INDICATORS	1. Methodology and Statistics	42	34.2	-7.8
		2. General Theory	40	19	-21
		3. Demography & Urban/ Rural Sociology	42.4	35.7	-6.7
		4. Social Psychology	42.1	34.7	-7.4
		5. Social Stratifica- tion	50.5	44.3	-6.2
		6. Race and Ethnic Relations	37	30.5	-6.5
		7. Deviance and Social Control	64.4	44.3	-20.1
		8. Social Inst/Complex Orgs/Soc Change	53.2	42.2	-11
=====		=====	=====	=====	=====

Source: Institutional Research Office
IR/kf
Jul-90

*Data for History, Music, and Psychology are based on samples of < 5 students

RETENTION RATES FALL ENROLLMENT OF FRESHMEN & TRANSFERS

Generally retention rates are considerably higher for first time freshmen students than for transfer students for their second year at Nyack. For the 1988 cohort this gap was greatly reduced with the transfer retention rate increasing 17.6 percent. (44.1% for the 1987 cohort and 61.7% for the 1988 cohort)

Year	Orig		2nd Yr		3rd Yr		4th Yr		5th Yr	
	#	%	#	%	#	%	#	%	#	%
1979	220		140	63.6%	104	47.3%	99	45.0%	99	45.0%
1980	185		119	64.3%	100	54.1%	91	49.2%	83	44.9%
1981	172		116	67.4%	90	52.3%	79	45.9%	77	44.8%
1982	157		118	75.2%	91	58.0%	83	52.9%	82	52.2%
1983	200		131	65.5%	96	48.0%	82	41.0%	76	38.0%
1984	192		116	60.4%	91	47.4%	87	45.3%	84	43.8%
1985	162		102	63.0%	83	51.2%	69	42.6%	71	43.8%
1986	176		111	63.1%	86	48.9%	80	45.5%		
1987	190		123	64.7%	102	53.7%				
1988	196		141	71.9%						
1989	177									

The first column represents matriculated students enrolled for the first time at Nyack College. The succeeding columns represent the number and percent of students from the original group who have graduated or are returning for the fall term of the next year. Extension students and students from the Adult Degree Program are not included.

Source: Registrar's Office
IR/kf
Nov-89

RETENTION RATES FALL ENROLLMENT OF FRESHMEN

Year	Orig #	2nd Yr #	%	3rd Yr #	%	4th Yr #	%	5th Yr #	%
1979	160	106	66.3%	79	49.4%	75	46.9%	74	46.3%
1980	127	89	70.1%	75	59.1%	68	53.5%	58	45.7%
1981	126	85	67.5%	65	51.6%	55	43.7%	53	42.1%
1982	103	78	75.7%	59	57.3%	56	54.4%	55	53.4%
1983	145	97	66.9%	68	46.9%	57	39.3%	55	37.9%
1984	141	87	61.7%	67	47.5%	63	44.7%	61	43.3%
1985	113	73	64.6%	57	50.4%	44	38.9%	48	42.5%
1986	123	88	71.5%	69	56.1%	63	51.2%		
1987	131	97	74.0%	77	58.8%				
1988	136	104	76.5%						
1989	118								

The first column represents matriculated students enrolled for the first time at Nyack College. The succeeding columns represent the number and percent of students from the original group who have graduated or are returning for the fall term of the next year. Extension students and students from the Adult Program are not included.

Source: Registrar's Office
IR/kf
Nov-89

RETENTION RATES FALL ENROLLMENT OF TRANSFERS

Year	Orig		2nd Yr		3rd Yr		4th Yr		5th Yr	
	#	%	#	%	#	%	#	%	#	%
1979	60		34	56.7%	25	41.7%	24	40.0%	25	41.7%
1980	58		30	51.7%	25	43.1%	23	39.7%	25	43.1%
1981	46		31	67.4%	25	54.3%	24	52.2%	24	52.2%
1982	54		40	74.1%	32	59.3%	27	50.0%	27	50.0%
1983	55		34	61.8%	28	50.9%	25	45.5%	21	38.2%
1984	51		29	56.9%	24	47.1%	24	47.1%	23	45.1%
1985	49		29	59.2%	26	53.1%	25	51.0%	23	46.9%
1986	53		23	43.4%	17	32.1%	17	32.1%		
1987	59		26	44.1%	25	42.4%				
1988	63		37	58.7%						
1989	59									

The first column represents matriculated students enrolled for the first time at Nyack College. The succeeding columns represent the number and percent of students from the original group who have graduated or are returning for the fall term of the next year. Extension students and students from the Adult Program are not included.

Source: Registrar's Office
IR/kf
Nov-89

CURRICULUM

ENROLLMENT BY CLASS, MAJOR, FULL-TIME AND PART-TIME

In 1989-90 the two majors with the largest percentage of juniors and seniors were Elementary Education (20.3%) and Psychology (14.3%). Other majors that currently have relatively large percentages of students are Bible (11.5%), Social Science (10.4%), English (9.9%), and Music Education (8.8%).

89-90

	Junior		Senior		Full-Time		Part-Time		Total	
	#	%	#	%	#	%	#	%	#	%
=====										
ASSOCIATE DEGREES										
Associate in Arts	1	1.0%	0	0.0%	1	0.6%	0	0.0%	1	0.5%
Associate in Science	0	0.0%	0	0.0%	0	0.0%	0	0.0%	0	0.0%
PROFESSIONAL MAJORS										
Christian Education	2	2.1%	3	4.2%	4	2.3%	1	0.0%	5	2.7%
Missiology	4	4.1%	1	1.4%	5	2.9%	0	0.6%	5	2.7%
Pastoral Ministry	0	0.0%	2	2.8%	1	0.6%	1	0.0%	2	1.1%
Elementary Education	19	19.6%	18	25.0%	35	20.3%	2	0.6%	37	20.3%
Music Education	8	8.2%	8	11.1%	16	9.3%	0	1.2%	16	8.8%
Interdisciplinary BS	0	0.0%	2	2.8%	2	1.2%	0	0.0%	2	1.1%
Business Administration	7	7.2%	1	1.4%	8	4.7%	0	0.0%	8	4.4%
Youth Ministries	2	2.1%	0	0.0%	2	1.2%	0	0.0%	2	1.1%
LIBERAL ARTS MAJORS										
Bible	15	15.5%	6	8.3%	20	11.6%	1	0.0%	21	11.5%
Cross Cultural Studies	0	0.0%	2	2.8%	2	1.2%	0	0.6%	2	1.1%
English	10	10.3%	8	11.1%	18	10.5%	0	0.0%	18	9.9%
History	8	8.2%	2	2.8%	10	5.8%	0	0.0%	10	5.5%
Philosophy	2	2.1%	0	0.0%	2	1.2%	0	0.0%	2	1.1%
Psychology	17	17.5%	9	12.5%	24	14.0%	2	0.0%	26	14.3%
Religion	1	1.0%	1	1.4%	2	1.2%	0	1.2%	2	1.1%
Social Science	12	12.4%	7	9.7%	17	9.9%	2	0.0%	19	10.4%
Interdisciplinary BA	0	0.0%	1	1.4%	1	0.6%	0	1.2%	1	0.5%
MUSIC MAJORS										
Church Music	1	1.0%	1	1.4%	1	0.6%	1	0.0%	2	1.1%
Composition	0	0.0%	0	0.0%	0	0.0%	0	0.6%	0	0.0%
Keybd/Orches	0	0.0%	0	0.0%	0	0.0%	0	0.0%	0	0.0%
Voice	1	1.0%	0	0.0%	0	0.0%	1	0.0%	1	0.5%
=====										
TOTALS	110		72		171		11		182	

Source: Registrar's Office

IR/kf

Jun-90

DEGREES CONFERRED BY MAJOR

	1978		1986		1987		1988		1989		1990	
	#	%	#	%	#	%	#	%	#	%	#	%
ASSOCIATE DEGREES												
Associates in Science			3	3.6%		0.0%	1	1.1%		0.0%	1	1.1%
Associates in Arts			2	2.4%	5	5.7%	2	2.3%	6	6.8%	6	6.8%
Subtotal			5	6.0%	5	5.7%	3	3.4%	6	6.8%	7	8.0%
BACHELOR OF SCIENCE												
Christian Ed.	8	8.7%	1	1.2%	4	4.5%	3	3.4%	3	3.4%	3	3.4%
Elementary Ed.	13	14.1%	18	21.4%	15	17.0%	12	13.6%	13	14.8%	18	20.5%
Interdisciplinary		0.0%		0.0%		0.0%		0.0%		0.0%	2	2.3%
Missiology	15	16.3%	2	2.4%	5	5.7%	4	4.5%	2	2.3%	2	2.3%
Pastoral Ministries	4	4.3%	2	2.4%	3	3.4%	2	2.3%	2	2.3%	1	1.1%
Business Administration		0.0%		0.0%		0.0%		0.0%	3	3.4%	4	4.5%
Sub-total	40	43.5%	23	27.4%	27	30.7%	21	23.9%	23	26.1%	30	34.1%
BACHELOR OF ARTS												
Bible		0.0%	4	4.8%	9	10.2%	14	15.9%	13	14.8%	6	6.8%
Cross Cultural Studies		0.0%		0.0%		0.0%	2	2.3%	2	2.3%	2	2.3%
English	5	5.4%	8	9.5%	8	9.1%	8	9.1%	7	8.0%	10	11.4%
History	2	2.2%	6	7.1%	3	3.4%	1	1.1%	4	4.5%	5	5.7%
Interdisciplinary		0.0%		0.0%		0.0%		0.0%		0.0%	2	2.3%
Philosophy	2	2.2%		0.0%	2	2.3%	3	3.4%	3	3.4%	1	1.1%
Psychology	11	12.0%	22	26.2%	13	14.8%	15	17.0%	22	25.0%	8	9.1%
Religion	5	5.4%	2	2.4%	5	5.7%	4	4.5%		0.0%	1	1.1%
Social Science	8	8.7%	5	6.0%	9	10.2%	11	12.5%	8	9.1%	12	13.6%
Sub-total	33	35.9%	47	56.0%	49	55.7%	58	65.9%	59	67.0%	47	53.4%
BACHELOR OF MUSIC												
Music Ed.	7	7.6%	3	3.6%	4	4.5%		0.0%	4	4.5%	4	4.5%
Keyboard/Instrumental	7	7.6%	2	2.4%	2	2.3%		0.0%	3	3.4%	0	0.0%
Vocal	4	4.3%	1	1.2%		0.0%	1	1.1%	1	1.1%	1	1.1%
Composition	1	1.1%		0.0%		0.0%		0.0%	1	1.1%	0	0.0%
Sub-total	19	20.7%	6	7.1%	6	6.8%	1	1.1%	9	10.2%	5	5.7%
BACHELOR OF SACRED MUSIC												
Church Music		0.0%	3	3.6%	1	1.1%		0.0%	2	2.3%	1	1.1%
TOTAL	92		84		88		83		99		90	

Source: Registrar's Office
IR/kf
Jun-90

COST PER MAJOR

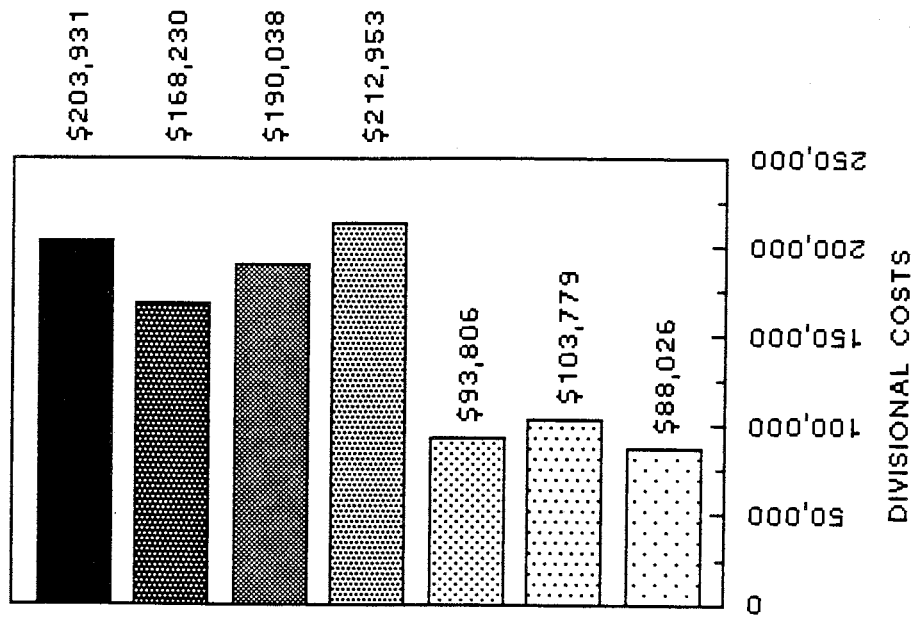
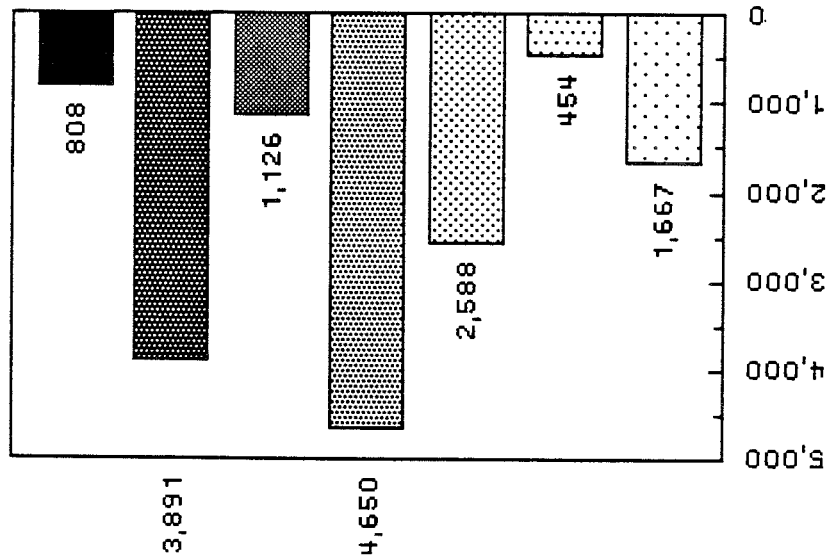
	UPPER LEVEL	LOWER LEVEL	TOTAL	% OF MAJORS	89-90 BUDGET PER STUD	90-91 BUDGET PER STUD	89-90 BUDGET	90-91 BUDGET
1 DIVISION OF BUSINESS SCIENCE AND MATH								
1.1 BUSINESS	8	42	50	11.39%				
	---	---	---	---				
TOTAL	8	42	50	11.39%	\$1,940	\$2,514	\$97,000.00	\$125,722.00
2 DIVISION OF CHRISTIAN MINISTRIES								
2.1 CHRISTIAN EDUCATION	5	13	18	4.10%				
2.2 MISSIOLOGY	5	8	13	2.96%				
2.3 PASTORAL MINISTRY	2	9	11	2.51%				
2.4 YOUTH MINISTRIES	2	9	11	2.51%				
	---	---	---	---				
TOTAL	14	39	53	12.07%	\$2,103	\$2,012	\$111,450.00	\$106,652.00
3 DIVISION OF EDUCATION								
3.1 ELEMENTARY ED	37	76	113	25.74%				
3.2 SECONDARY ED	3							
	---	---	---	---				
TOTAL	40	76	113	25.74%	\$1,692	\$1,293	\$191,200.00	\$146,066.00
4 DIVISION OF HUMANITIES								
4.1 ENGLISH	18	14	32	7.29%				
4.2 HISTORY	10	8	18	4.10%				
	---	---	---	---				
TOTAL	28	22	50	11.39%	\$4,524	\$4,373	\$226,200.00	\$218,651.00
5 DIVISION OF MUSIC AND FINE ARTS								
5.1 CHURCH MUSIC	2	1	3	0.68%				
5.2 VOCAL	1	2	3	0.68%				
5.3 MUSIC EDUCATION	16	12	28	6.38%				
	---	---	---	---				
TOTAL	19	15	34	1.37%	\$6,532	\$5,535	\$222,100.00	\$188,181.00

COST PER MAJOR

	UPPER LEVEL	LOWER LEVEL	TOTAL	% OF MAJORS	89-90 BUDGET PER STUD	90-91 BUDGET PER STUD	89-90 BUDGET	90-91 BUDGET
6 DIVISION OF RELIGION AND PHILOSOPHY								
6.1 BIBLE	21	20	41	9.34%				
6.2 PHILOSOPHY	2	3	5	1.14%				
6.3 RELIGION	2	1	3	0.68%				
	---	---	---	---				
TOTAL	25	24	49	11.16%	\$3,848	\$3,623	\$188,560.00	\$177,510.00
7 DIVISION OF SOCIAL SCIENCE								
7.1 PSYCHOLOGY	26	33	59	13.44%				
7.2 SOCIAL SCIENCE	19	12	31	7.06%				
	---	---	---	---				
TOTAL	45	45	90	20.50%	\$1,314	\$1,738	\$118,300.00	\$156,445.00
	===	===	===	===				
GRAND TOTAL	179	263	439	100.00%	\$2,631	\$2,549	\$1,154,810.00	\$1,119,227.00

DIVISIONAL PRODUCTIVITY

1989-90

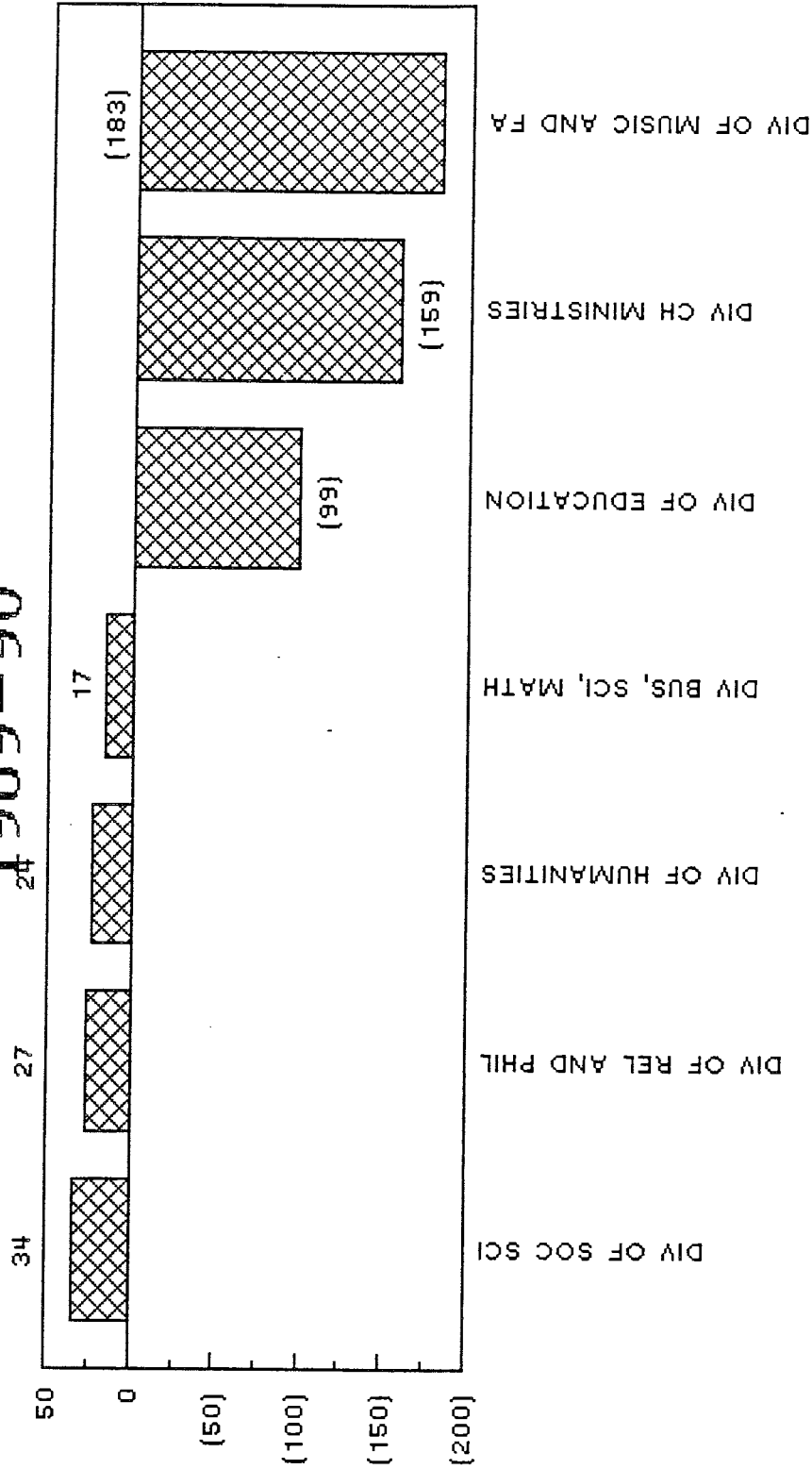


CREDIT HRS TAUGHT

DIVISIONAL COSTS

DEV FROM AVERAGE COST /CR HR By Rank Order

1989-90



AVER COST/CR HR IS \$72.5

C:\GW\CHARTS\BUDGET\DIS-COST\DEV89-90.CHT

Prepared by Ron Ruegsegger

FACULTY AND STAFF

FACULTY SUMMARY

In the Fall of 1989 there were 50 Full-Time faculty members at Nyack College. The largest number of faculty are administrative (26%) although there is a 3% decrease from the previous year. The next largest group are the Instructors (24%) and then both the Professors and Assistant Professors (18%), and finally Associate Professors (14%).

There are more male faculty members (70%) than female faculty members (30%). And 92% of the faculty are white and 8% are minorities.

		Full-Time	
		#	%
Total		50	100%
Rank			
	Professor	9	18%
	Associate Professor	7	14%
	Assistant Professor	9	18%
	Instructor	12	24%
	Administrative	13	26%
	<u>Total</u>	<u>50</u>	<u>100%</u>
Gender			
	Male	35	70%
	Female	15	30%
	<u>Total</u>	<u>50</u>	<u>100%</u>
Race			
	Black	2	4%
	Hispanic	1	2%
	Asian	1	2%
	White	46	92%
	<u>Total</u>	<u>50</u>	<u>100%</u>

Source: Academic Office

IR/kf

Aug-89

FACULTY BY RANK, GENDER, STATUS, SERVICE, & RACE

(% = % of Ranked Teaching Faculty)

	79--80		85--86		86--87		87--88		88--89		89-90	
	#	%	#	%	#	%	#	%	#	%	#	%
PROFESSOR TOTALS	11	32.4%	10	30.3%	9	29.0%	7	21.9%	9	25.7%	9	24.3%
Gender: Male	9	26.5%	8	24.2%	7	22.6%	5	15.6%	6	17.1%	6	16.2%
Female	2	5.9%	2	6.1%	2	6.5%	2	6.3%	3	8.6%	3	8.1%
Status: Full	10	29.4%	8	24.2%	8	25.8%	6	18.8%	8	22.9%	8	21.6%
Part	1	2.9%	2	6.1%	1	3.2%	1	3.1%	1	2.9%	1	2.7%
Service: Ave. Years	17.8		18.9		19.1		20.3		20.3		17.7	
Tenured	11	32.4%	8	24.2%	7	22.6%	7	21.9%	7	20.0%	6	16.2%
Race: Black/Non-His	0	0.0%	0	0.0%	0	0.0%	0	0.0%	0	0.0%	0	0.0%
Hispanic	0	0.0%	0	0.0%	0	0.0%	0	0.0%	0	0.0%	0	0.0%
Asian/Amer	1	2.9%	0	0.0%	0	0.0%	0	0.0%	0	0.0%	0	0.0%
White/Non-His	10	29.4%	10	30.3%	9	29.0%	7	21.9%	9	25.7%	9	24.3%
Non-res Alien	0	0.0%	0	0.0%	0	0.0%	0	0.0%	0	0.0%	0	0.0%
ASSOCIATE PROF. TOTAL	8	23.5%	6	18.2%	5	16.1%	5	15.6%	9	25.7%	7	18.9%
Gender: Male	6	17.6%	5	15.2%	4	12.9%	4	12.5%	8	22.9%	7	18.9%
Female	2	5.9%	1	3.0%	1	3.2%	1	3.1%	1	2.9%	0	0.0%
Status: Full	7	20.6%	4	12.1%	4	12.9%	4	12.5%	8	22.9%	7	18.9%
Part	1	2.9%	2	6.1%	1	3.2%	1	3.1%	1	2.9%	0	0.0%
Service: Ave. Years	11		10.5		12.8		13.4		11.4		14.9	
Tenured	6	17.6%	3	9.1%	3	9.7%	3	9.4%	5	14.3%	5	13.5%
Race: Black/Non-His	0	0.0%	0	0.0%	0	0.0%	0	0.0%	0	0.0%	0	0.0%
Hispanic	1	2.9%	0	0.0%	0	0.0%	0	0.0%	0	0.0%	0	0.0%
Asian/Amer	0	0.0%	0	0.0%	0	0.0%	0	0.0%	0	0.0%	0	0.0%
White/Non-His	7	20.6%	6	18.2%	5	16.1%	5	15.6%	9	25.7%	7	18.9%
Non-res Alien	0	0.0%	0	0.0%	0	0.0%	0	0.0%	0	0.0%	0	0.0%
ASSISTANT PROF. TOTAL	6	17.6%	9	27.3%	9	29.0%	11	34.4%	6	17.1%	9	24.3%
Gender: Male	5	14.7%	7	21.2%	7	22.6%	9	28.1%	5	14.3%	5	13.5%
Female	1	2.9%	2	6.1%	2	6.5%	2	6.3%	1	2.9%	4	10.8%
Status: Full	4	11.8%	7	21.2%	6	19.4%	8	25.0%	3	8.6%	7	18.9%
Part	2	5.9%	2	6.1%	3	9.7%	3	9.4%	3	8.6%	2	5.4%
Service: Ave. Years	7.3		8.3		8		7.4		1.7		2.6	
Tenured	1	2.9%	1	3.0%	3	9.7%	1	3.1%	0	0.0%	0	0.0%
Race: Black/Non-His	0	0.0%	0	0.0%	0	0.0%	0	0.0%	0	0.0%	0	0.0%
Hispanic	0	0.0%	0	0.0%	0	0.0%	0	0.0%	0	0.0%	0	0.0%
Asian/Amer	0	0.0%	0	0.0%	0	0.0%	0	0.0%	0	0.0%	0	0.0%
White/Non-His	6	17.6%	9	27.3%	9	29.0%	11	34.4%	6	17.1%	9	24.3%
Non-res Alien	0	0.0%	0	0.0%	0	0.0%	0	0.0%	0	0.0%	0	0.0%
INSTRUCTORS TOTAL	9	26.5%	8	24.2%	8	25.8%	9	28.1%	11	31.4%	12	32.4%
Gender: Male	6	17.6%	5	15.2%	6	19.4%	4	12.5%	4	11.4%	6	16.2%
Female	3	8.8%	3	9.1%	2	6.5%	5	15.6%	7	20.0%	6	16.2%
Status: Full	1	2.9%	3	9.1%	1	3.2%	2	6.3%	0	0.0%	3	8.1%
Part	8	23.5%	5	15.2%	7	22.6%	7	21.9%	11	31.4%	9	24.3%
Service: Ave. Years	4.9		5.4		5.9		2.6		1.4		2.4	
Tenured	0	0.0%	0	0.0%	0	0.0%	0	0.0%	0	0.0%	0	0.0%
Race: Black/Non-His	0	0.0%	0	0.0%	0	0.0%	0	0.0%	1	2.9%	1	2.7%
Hispanic	0	0.0%	0	0.0%	0	0.0%	0	0.0%	0	0.0%	1	2.7%
Asian/Amer	0	0.0%	0	0.0%	0	0.0%	0	0.0%	1	2.9%	1	2.7%
White/Non-His	9	26.5%	8	24.2%	8	25.8%	9	28.1%	9	25.7%	9	24.3%
Non-res Alien	0	0.0%	0	0.0%	0	0.0%	0	0.0%	0	0.0%	0	0.0%
TOTAL	34		33		31		32		35		37	

	79--80	85--86	86--87	87--88	88--89	89-90
	#	#	#	#	#	#
=====						
ADJUNCT*						
Gender: Male	15	17	14	14	11	17
Female	7	9	7	5	11	9
Status: Full						
Part	22	26	21	19	22	26
Race: Black/Non-His				1	1	1
Hispanic	1	2	2	1	1	
Asian/Amer				1		
White/Non-His	21	24	19	16	20	25
Non-res Alien						
	-----	-----	-----	-----	-----	-----
	22	26	21	19	22	26
NONTEACHING						
Gender: Male	6	9	9	8	11	11
Female	2	2	2		3	2
Status: Full	8	11	11	8	14	12
Part						1
Tenured	2	1	1			
Service: Ave. Years					3	4.5
Race: Black/Non-His		1	1	1	1	1
Hispanic						
Asian/Amer	1	1				
White/Non-His	7	9	10	7	13	12
Non-res Alien						
	-----	-----	-----	-----	-----	-----
	8	11	11	8	14	13

*Data does not include Commission Faculty

Source: Academic Office
IR/dh
Aug-90

STAFF BY RANK, GENDER, RACE, SERVICE AND DEGREE

The staff at Nyack College have been categorized into five groups: Service/Maintenance, Management/Confidential, Executive Secretary, Secretary, and Clerical. Employees of Pioneer Food Service, Service Master, and Dagley are not included.

There are a total of 41 staff members employed at the College. Of these 41, 37% are males and 63% are females. Nyack's employees are composed of 95% white staff and 5% minorities. 54% of the staff members hold some form of a degree (Doctorate 3%, Masters 10%, Bachelors 34%, and Associates 7%).

Among the 41 staff members 68% have been employed at Nyack for less than 5 years.

STAFF CHARACTERISTICS

STAFF CLASSIFICATIONS		#	%
Staff Summary	Total	41	100%
	Sex		
	Male	15	37%
	Female	26	63%
	Race		
	White	39	95%
	Asian	2	5%
	Yrs of Service		
	15 plus	6	15%
	10 to 14	2	5%
	5 to 9	5	12%
	Less than 5	28	68%
	Degree		
Associate	3	7%	
Bachelors	14	34%	
Masters	4	10%	
Doctorate	1	2%	

STAFF CLASSIFICATIONS		#	%
Service Maintenance	Total	7	100%
	Sex		
	Male	7	100%
	Female	0	0%
	Race		
	White	5	71%
	Asian	2	29%
	Yrs of Service		
	15 plus	2	29%
	10 to 14	0	0%
	5 to 9	0	0%
	Less than 5	5	71%
	Degree		
Associate	1	14%	
Bachelors	2	29%	
Masters	0	0%	
Doctorate	1	14%	

STAFF CHARACTERISTICS

STAFF CLASSIFICATIONS		#	%
Management / Confidential Staff	Total	9	100%
	Sex		
	Male	5	56%
	Female	4	44%
	Race		
	White	9	100%
	Yrs of Service		
	15 plus	2	22%
	10 to 14	1	11%
	5 to 9	1	11%
	Less than 5	5	56%
	Degree		
	Associate	1	11%
	Bachelors	2	22%
	Masters	2	22%
	Doctorate	0	0%

STAFF CLASSIFICATIONS		#	%
Secretary	Total	8	100%
	Sex		
	Male	0	0%
	Female	8	100%
	Race		
	White	8	100%
	Yrs of Service		
	15 plus	1	13%
	10 to 14	1	13%
	5 to 9	1	13%
	Less than 5	5	63%
	Degree		
	Associate	0	0%
	Bachelors	6	75%
	Masters	0	0%
	Doctorate	0	0%

STAFF CLASSIFICATIONS		#	%
Executive Secretary	Total	8	100%
	Sex		
	Male	2	25%
	Female	6	75%
	Race		
	White	8	100%
	Yrs of Service		
	15 plus	1	13%
	10 to 14	0	0%
	5 to 9	1	13%
	Less than 5	6	75%
	Degree		
	Associate	2	25%
	Bachelors	4	50%
	Masters	2	25%
	Doctorate	0	0%

STAFF CLASSIFICATIONS		#	%
Clerical	Total	9	100%
	Sex		
	Male	1	11%
	Female	8	89%
	Race		
	White	9	100%
	Yrs of Service		
	15 plus	0	0%
	10 to 14	0	0%
	5 to 9	2	22%
	Less than 5	7	78%
	Degree		
	Associate	0	0%
	Bachelors	2	22%
	Masters	0	0%
	Doctorate	0	0%

Source: Assistant Treasurer's Office
 IR/kf
 Aug-90

**A
L
U
M
N
I**

ALUMNI SUPPORT

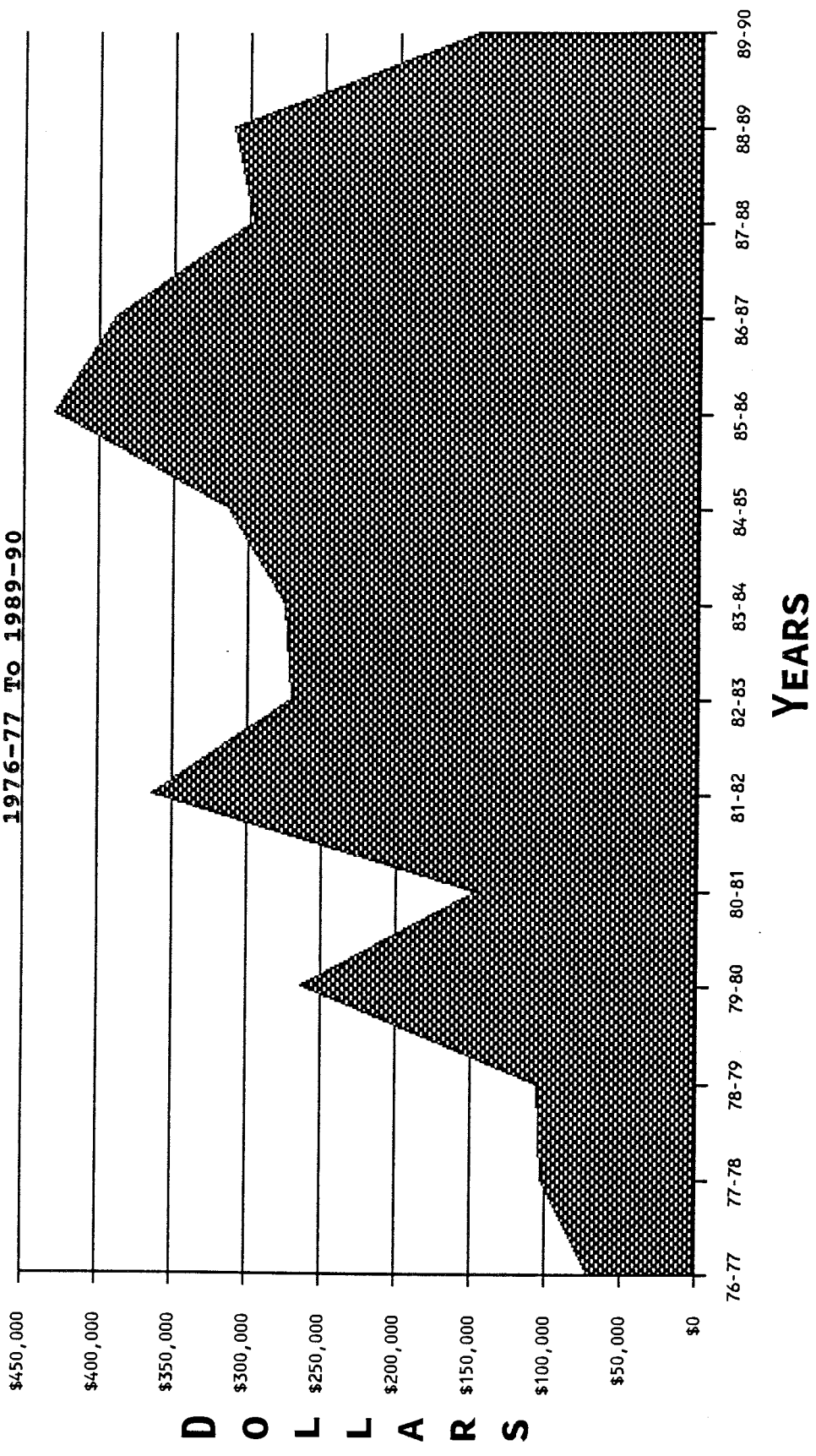
Fiscal Year	Active Mailing List	# of Donors	Average Gift	Total Support	% Change From ast Yea
1976-77	*	766	\$93	\$70,974	
1977-78	*	945	\$109	\$102,968	31.1%
1978-79	*	1083	\$99	\$106,739	3.5%
1979-80	*	915	\$289	\$264,091	59.6%
1980-81	*	936	\$158	\$147,502	-79.0%
1981-82	*	1158	\$314	\$363,644	59.4%
1982-83	*	972	\$278	\$270,003	-34.7%
1983-84	*	1356	\$202	\$274,538	1.7%
1984-85	*	1221	\$257	\$313,428	12.4%
1985-86	*	925	\$464	\$429,216	27.0%
1986-87	*	1201	\$323	\$388,312	-10.5%
1987-88	6653	749	\$397	\$297,104	-30.7%
1988-89	6600	744	\$418	\$311,050	4.5%
1989-90	6512	1731	\$85	\$147,222	-111.3%

* Data not available

Source: Advancement Office
IR/kf
Aug-89

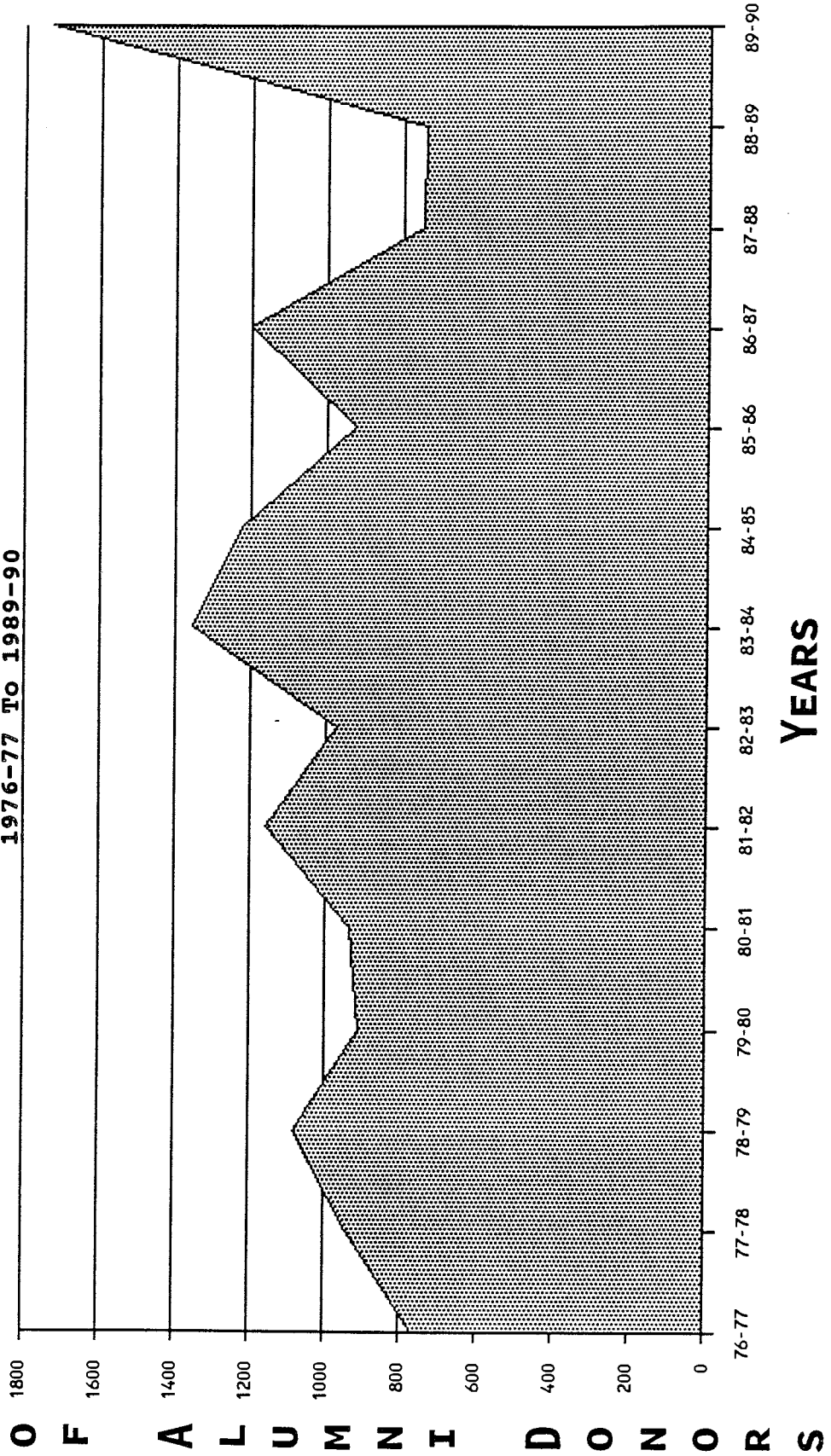
ALUMNI SUPPORT

1976-77 To 1989-90



NUMBER OF ALUMNI DONORS

1976-77 To 1989-90



FACILITIES

FACILITIES

1. BASIC STRUCTURES	SQ. FT.	FLOORS	FUNCTIONS
Campus Center	55,380	5	Classrooms, Student Services & Offices
Christie Hall	37,693	B-4	Dormitory
Ed. Building	1,801	2	Classrooms & Offices
Faculty Offices	2,198	2	Offices
Moseley Hall	6,256	2	Dormitory
Pardington Hall	22,740	B-4	Classrooms. Offices, Chapel
Shuman Hall	23,194	B-2	Library & Offices
Simpson Hall	53,040	B-4	Dormitory & Classrooms
Bowman Gym			

2. ROOM USE CATEGORIES	SQ. FT.
Classrooms	9,663
Laboratories	5,729
Offices - Faculty	2,198
Offices - Administration	9,259
Assembly Facilities	2,840
Food Service	6,772
Lounges	9,522
Merchandising Facilities	1,332
Storage	10,904
Health Care Facilities	253
Athletic Facilities	16,014
Library	7,903
Dorm Rooms	43,296

3. TOTAL ACREAGE	65
------------------	----

NOTES:

Sections 1 & 2 are undergraduate totals.

The total acreage was estimated by the Treasurer's Office and includes both Nyack & ATS.

Source: Committee Reports of
Long Range Planning Committee
and B & G Collected in 1988.

IR/ah
8/88

FINANCES

NYACK COLLEGE FINANCIAL HISTORY

1986-87 to 1989-90

	ACTUAL 1986-87	ACTUAL 1987-88	ACTUAL 1988-89	ACTUAL* 1989-90	AVERAGE YEARLY INCREASE
	-----	-----	-----	-----	-----
TUITION & FEES					

TRADITIONAL TUITION	2,391,907	2,741,146	3,005,264	3,142,010	10.45%
ADULT ED TUITION				250,750	
LAB FEES	4,560	4,225	3,905	5,805	9.10%
MUSIC & FINE ARTS FEES	31,905	28,077	51,389	28,989	-3.05%
EDUCATION LAB FEES	2,375	2,298	2,425	2,843	6.56%
PHYSICAL EDUCATION FEES	1,894	1,726	1,484	1,331	-9.91%
OTHER ACADEMIC FEES	4,284	27,712	8,697	4,395	0.86%
REGISTRATION FEES	117,312	134,303	144,935	151,003	9.57%
STUDENT ACTIVITY FEES ALLOCATED	(38,483)	(39,825)	(32,121)	(32,942)	-4.80%
OTHER FEES	11,746			22,045	29.23%
	-----	-----	-----	-----	
TOTAL TUITION & FEES	2,527,500	2,899,662	3,185,978	3,576,228	13.83%
	-----	-----	-----	-----	
OTHER SOURCES OF INCOME					

GOVERNMENT INCOME	47,289			57,285	7.05%
PRIVATE GIFTS & GRANTS	217,022	333,727	567,877	745,771	81.21%
STUDENT AID	113,250			10,090	-30.36%
SALES & SERVICES OF ED. ACTIVITIES	49,801	51,205	26,548	2,726	-31.51%
RECOVERY OF INDIRECT COSTS	9,933	10,147	4,939		-33.33%
OTHER SOURCES	154,996	75,521	80,250	71,065	-18.05%
	-----	-----	-----	-----	
TOTAL OTHER SOURCES	592,291	470,600	679,614	886,938	16.58%
	-----	-----	-----	-----	
TOTAL EDUCATIONAL & GEN. REVENUE	3,119,791	3,370,262	3,865,592	4,463,166	14.35%
	-----	-----	-----	-----	
AUXILIARY SERVICES	1,681,989	1,733,102	1,846,049	1,962,962	5.57%
	-----	-----	-----	-----	
TOTAL CURRENT FUND REVENUE	4,801,780	5,103,364	5,711,641	6,426,129	11.28%
	-----	-----	-----	-----	

NYACK COLLEGE FINANCIAL HISTORY

1986-87 to 1989-90

	ACTUAL 1986-87	ACTUAL 1987-88	ACTUAL 1988-89	ACTUAL* 1989-90	AVERAGE YEARLY INCREASE
	-----	-----	-----	-----	-----
INSTRUCTION	913,913	1,098,902	1,273,083	1,230,897	11.56%
ADULT EDUCATION				361,150	
ACADEMIC SUPPORT	182,385	199,542	230,092	210,347	5.11%
PUBLIC SERVICE	6,568	6,719	7,282	4,435	-10.83%
STUDENT SERVICES	667,256	817,122	850,816	868,239	10.04%
INSTITUTIONAL SUPPORT	818,431	949,196	1,209,206	1,142,361	13.19%
OPERATION OF PLANT	537,963	565,859	709,645	605,287	4.17%
STUDENT AID	314,441	441,114	552,985	531,293	22.99%
	-----	-----	-----	-----	
TOTAL E & G EXPENSE	3,440,957	4,078,454	4,833,109	4,954,008	14.66%
	-----	-----	-----	-----	
E & G MANDATORY TRANSFERS	214,498	19,082	39,419	110,643	-16.14%
	-----	-----	-----	-----	
TOTAL E & G & MANDATORY TRANSFERS	3,655,455	4,097,536	4,872,528	5,064,651	12.85%
	-----	-----	-----	-----	
AUXILIARY SERVICES	954,078	979,254	1,207,093	1,334,877	13.30%
AUX. SERV. MANDATORY TRANSFERS	58,234			126,929	39.32%
	-----	-----	-----	-----	
TOTAL AUXILIARY & MAND. TRANS.	1,012,312	979,254	1,207,093	1,461,806	14.80%
	-----	-----	-----	-----	
TOTAL NON-MANDATORY TRANSFERS	129,000				-33.33%
	-----	-----	-----	-----	
TOTAL EXPENSES & TRANSFERS	4,796,767	5,076,790	6,079,621	6,526,457	12.02%
	-----	-----	-----	-----	
TOTAL INCR. (DECR.) IN FUND BAL.	5,013	(27,093)	(365,869)	(100,328)	-700.45%
	=====	=====	=====	=====	

*Pre-Audit

Ron Ruesegger

Assistant to President/Strategic Planning

STUDENT AID

	88-89		89-90		90-91	
	# Awards	Dollars	# Awards	Dollars	# Awards	Dollars
LOANS						
GSL	294	\$747,596.50	353	\$987,363.50	358	\$1,042,324.00
Perkins	108	\$81,573.00	133	\$82,386.00	117	\$71,200.00
PLUS	38	\$123,500.00	15	\$24,000.00	7	\$26,000.00
Auxilliary	1	\$3,000.00	0	\$0.00	18	\$58,471.00
VSAC	10	\$10,750.00	10	\$11,650.00	3	\$4,050.00
EMPLOYMENT						
CWS	116	\$88,595.48	146	\$143,412.00	168	\$127,096.00
Non-CWS	13	\$8,914.00	*	*	*	*
GRANTS						
Tuition Remission	35	\$79,537.35	4	\$22,388.00	14	\$80,624.00
Top Ten Sch.	8	\$1,200.00	11	\$1,800.00	0	\$0.00
Pell	214	\$341,565.50	225	\$391,275.00	256	\$427,511.00
SEOG	64	\$26,072.00	82	\$23,450.00	111	\$31,500.00
TAP	178	\$361,085.50	194	\$461,222.00	73	\$569,037.00
HEOP-state	43	\$116,339.29	44	\$80,668.00	42	\$65,234.00
Scholarships	35	\$34,241.70	67	\$36,531.50	38	\$44,960.00
Institutional	551	\$413,368.01	416	\$338,357.50	484	\$383,498.00
TOTAL	1708	\$2,437,338.33	1700	\$2,604,503.50	1689	\$2,931,505.00

* Data not available

Source: Financial Aid Office
IR/kf
Aug-90