

**THE NYACK COLLEGE
FACT BOOK**

1988-89
(Printed August 1989)

FOREWORD

The purpose of this Fact Book is to centralize and standardize data about Nyack College which can be utilized for planning, public relations, accreditation reviews, etc.

This is the second annual edition of the Fact Book. While there have been some improvements in terms of additional data, readability and design, the organization has remained the same.

Since this is only the second edition, there are areas that will require improvement and refinement; additional data could be added as well as some data being presented more effectively. If there are any suggestions for improvement or areas that have been overlooked, please let me know.

Since the scope of this book is the entire institution, it has been necessary to gather data from many departments. I have appreciated the cooperation that so many of you have given me.

Kimberly S. Farrell
Director of Institutional Research

TABLE OF CONTENTS

I.	Institutional Profile	p.	1
	A. Fingertip Facts	p.	2
	B. Board of Trustees: Members	p.	3
	C. Board of Trustees: Committees	p.	4
	D. Nyack College Organizational Charts		
	1. Central Administration	p.	5
	2. Academic Affairs	p.	6
	3. Finance	p.	7
	4. Student Development	p.	8
	5. Advancement	p.	9
II.	Students	p.	10
	A. Enrollment Summary	p.	11
	B. FTE Enrollment	p.	12
	C. Head Count Enrollment	p.	13
	D. Enrollment by State of Origin		
	1. Summary Table	p.	14
	2. Mid-Atlantic Region	p.	15
	3. Other Regions	p.	16
	E. Enrollment by County	pp.	17,18
	F. Enrollment by Denominational Affiliation		
	1. Summary Table	p.	19
	2. The Christian & Missionary Alliance	p.	20
	3. Other Denominations	p.	21
	G. Enrollment by Race and Gender	p.	22
	H. Enrollment by Age and Marital Status	p.	23
	I. Vocational and Educational Intentions		
	1. Specific Vocational Intentions	p.	24
	2. Church Related Verses Non-Church Related Vocational Intentions	p.	25
	J. Testing Results		
	1. Freshmen SAT Scores	p.	26
	2. National Teacher Examination	p.	26
	3. Major Field Achievement Tests	p.	27,28
	K. Retention Rates		
	1. Fall Enrollment of Freshmen and Transfers	p.	29
	2. Fall Enrollment of Freshmen	p.	30
	3. Fall Enrollment of Transfers	p.	31
III.	Curriculum	p.	32
	A. Enrollment by Class, Major, Full-Time, and Part-Time	p.	33
	B. Degrees Conferred By Major	p.	34
	C. Departmental Productivity	p.	35
	D. Departmental Productivity Charts		
	1.	pp.	36a-
	2.		36?

IV.	Faculty and Staff	p. 37
	A. Faculty Summary	p. 38
	B. Faculty by Rank, Gender, Status, Service, and Race	pp. 39,40
	C. Staff by Rank, Gender, Race, Service, and Degree	pp. 41,42
V.	Alumni	p. 43
	A. Alumni Support Summary Table	p. 44
	B. Alumni Support Dollars	p. 45
	C. Number of Alumni Donors	p. 46
	D. Geographic Distribution of Alumni	p. 47
VI.	Facilities	p. 48
	A. Square Footage and Functions	p. 49
VII.	Finances	p. 50
	A. Financial Patterns (Table)	pp. 51,52
	B. Financial Patterns Charts	
	1.	pp. 53a-
	2.	53?
	C. Student Aid	p. 54

INSTITUTIONAL PROFILE

BOARD OF TRUSTEE MEMBERS

TERM EXPIRES SEPTEMBER 1990

Dr. Richard L. Brown
Chiropractor

Mr. Ronald E. Eastman
Group Vice President,
Lodging-Dev. Marriott Corp.

Mr. Jim Gilbert
President, Alumni Association
of Nyack College,
Public School Teacher

Mr. Paul D. Glenn
Federal Home Loan Bank Board

Rev. Charles R. Holmes
District Superintendent
C & M A Central District

Rev. Dahl B. Seckinger
District Superintendent
C & M A Great Lakes District

Dr. Donald V. Seibert
Retired Chairman and Chief
Executive Officer, J. C. Penny
Co., Inc.

Mr. Ronald L. Wilson
Commercial Realtor

TERM EXPIRES SEPTEMBER 1991

Mr. Rexford A. Boda*
President, Nyack College and
Alliance Theological Seminary

Mr. Alan J. Carter
Owner, President, Blue Ridge
Broadcasting, Inc. & Johnson
Electric Corp., Dir. of Horizon
Assoc., Dir. of New Life
Ministries and Founder of Voice
Enterprises

Mr. Peter Dys
Executive Director of Shell
Point Village

Rev. Paul Hazlett
District Superintendent
C & M A Metropolitan District

Dr. Robert E. Nanfelt
Chairman of the Board
Retired, President, US Fused
Quartz

Dr. David L. Rambo*
President, The Christian and
Missionary Alliance

Mr. Robert L. Sanford
Retired, President, International
Div., Nabisco Corp.

Mr. Duane A. Wheeland*
Vice Pres. for Finance/Treasurer,
The C & M A

TERM EXPIRES SEPTEMBER 1992

Rev. Richard W. Bailey
Vice President for Church
Ministries, The C & M A

Mr. Joseph E. Bersche
Pres., Controlled Dev. Inc.

Rev. Cornelius W. Clarke
District Superintendent
C & M A New England District

Rev. Rockwell L. Dillaman
Pastor, Allegheny Center,
C & M A Church

Dr. Walter J. Helsing
Retired, Orthopedic Surgeon

Rev. David K. Muir
District Superintendent
C & M A Western PA. District

Rev. Donald L. Paine
Pastor, Pineview Community
Church

Rev. Woodford C. Stemple
District Superintendent
C & M A Northeastern Dist.

*Ex Officio members
(Trustees are elected by the Board of
Trustees)

BOARD OF TRUSTEES
Spring 1988-89

EXECUTIVE COMMITTEE

Robert E. Nanfelt, Chairman
Donald V. Seibert, Vice Chairman
Paul D. Glenn, Secretary
Richard W. Bailey
David L. Rambo
Duane Wheeland

COMMITTEE ON ACADEMIC AFFAIRS, NYACK COLLEGE

Walter J. Helsing, Chairman
Paul D. Glenn
Charles R. Holmes

COMMITTEE OF ACADEMIC AFFAIRS, ATS

David L. Rambo, Chairman
Richard W. Bailey
Rockwell L. Dillaman
Timothy J. Pettit

COMMITTEE ON BUDGET AND FINANCE

Ronald E. Eastman, Chairman
Peter Dys
Robert E. Nanfelt
Duane Wheeland

COMMITTEE ON BUILDINGS & GROUNDS

Joseph E. Bersche, Chairman
Dwight G. Anderson
Richard L. Brown
Ronald Wilson

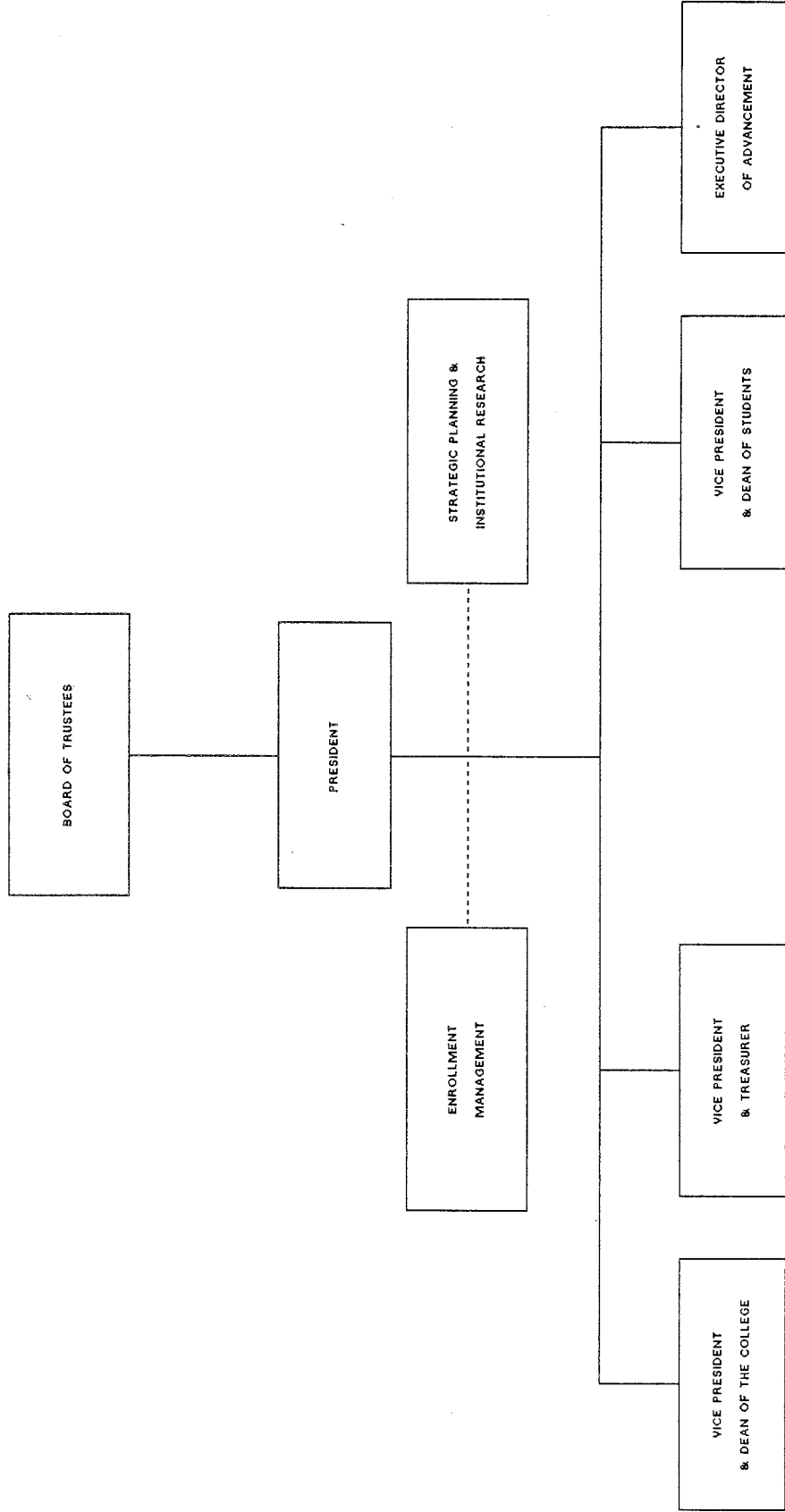
COMMITTEE ON PROMOTION & DEVELOPMENT

Donald V. Seibert, Chairman
Alan J. Carter
Robert Sanford

COMMITTEE ON SPIRITUAL & STUDENT AFFAIRS

Dahl B. Seckinger, Chairman
Paul Hazlett
James Gilbert
David K. Muir

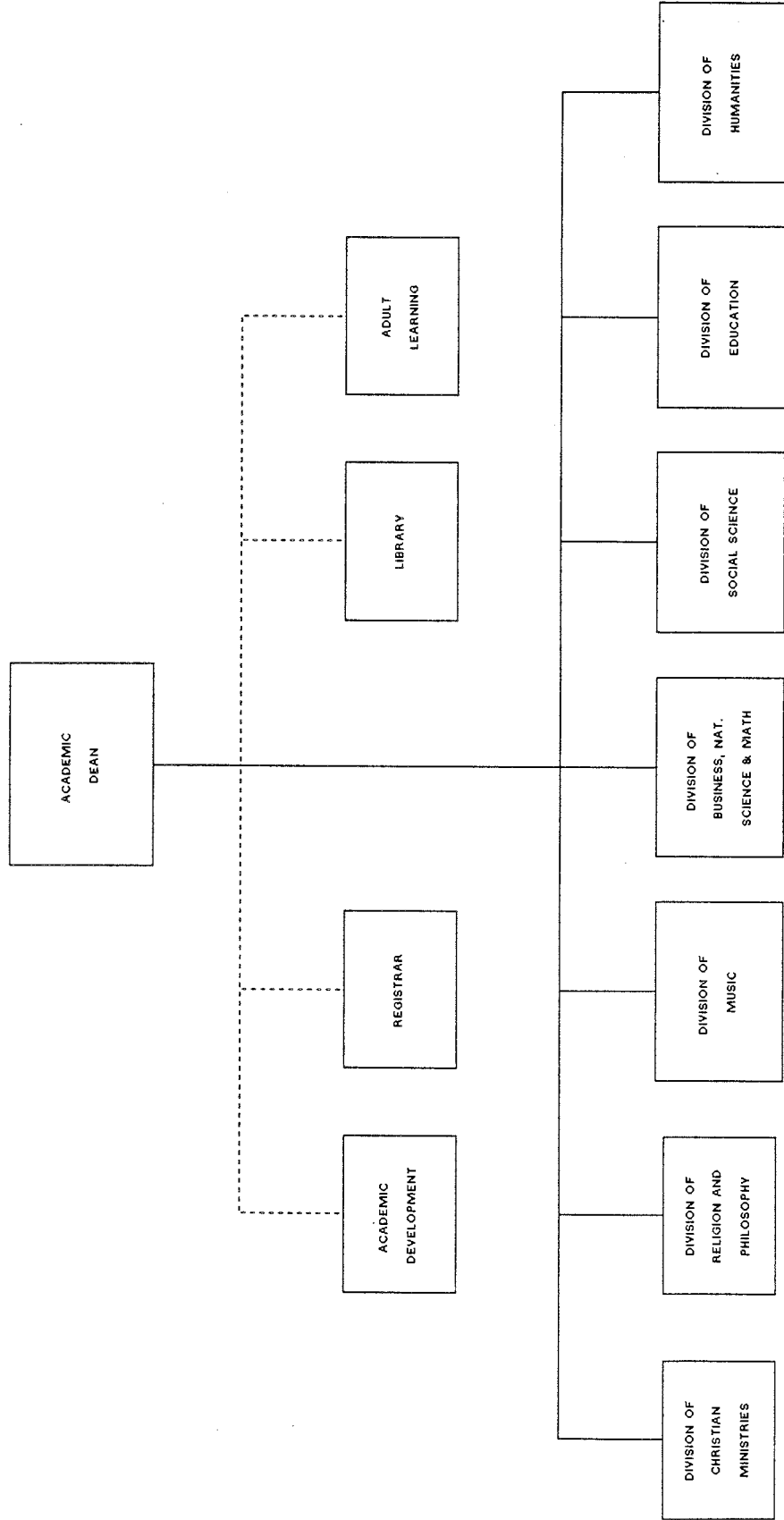
NYACK COLLEGE CENTRAL ADMINISTRATION



Solid line = Line position
Dotted line = Staff position

Prepared by Ron Rueggger

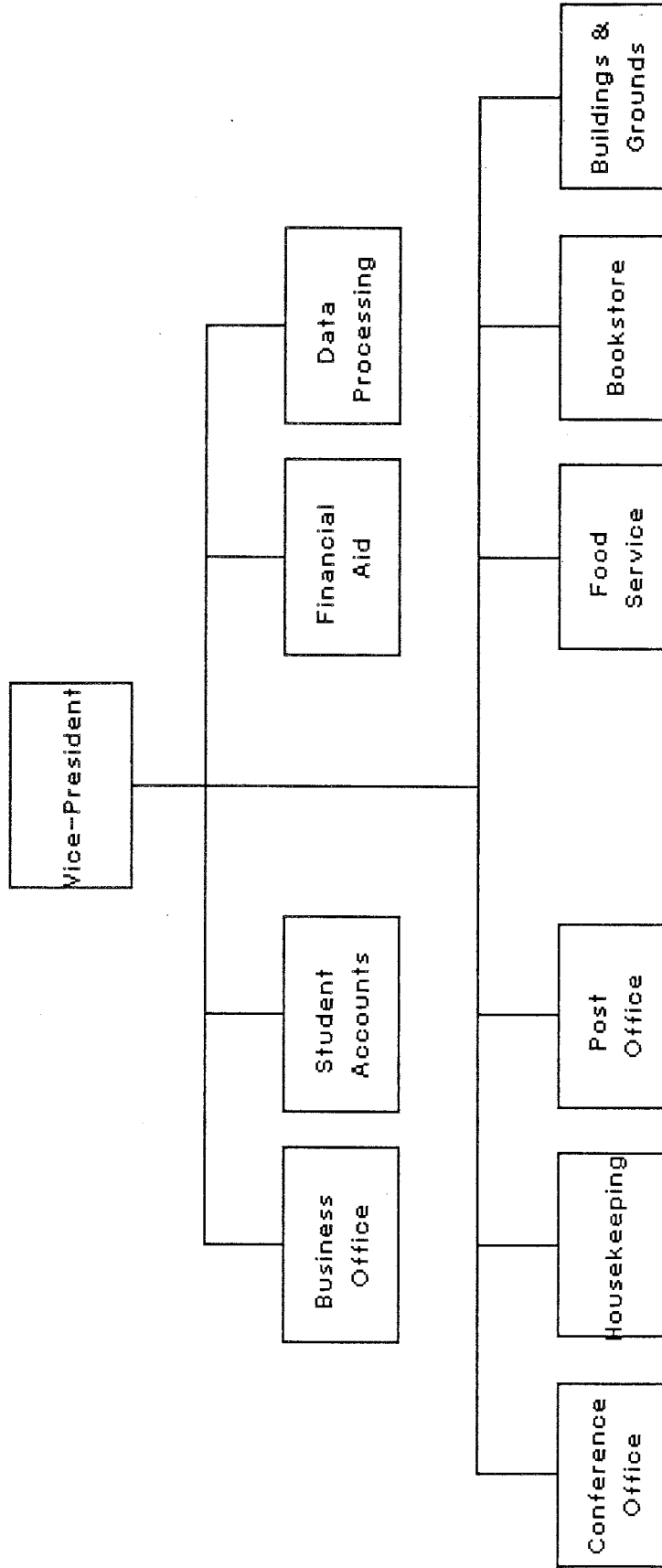
NYACK COLLEGE ACADEMIC AFFAIRS



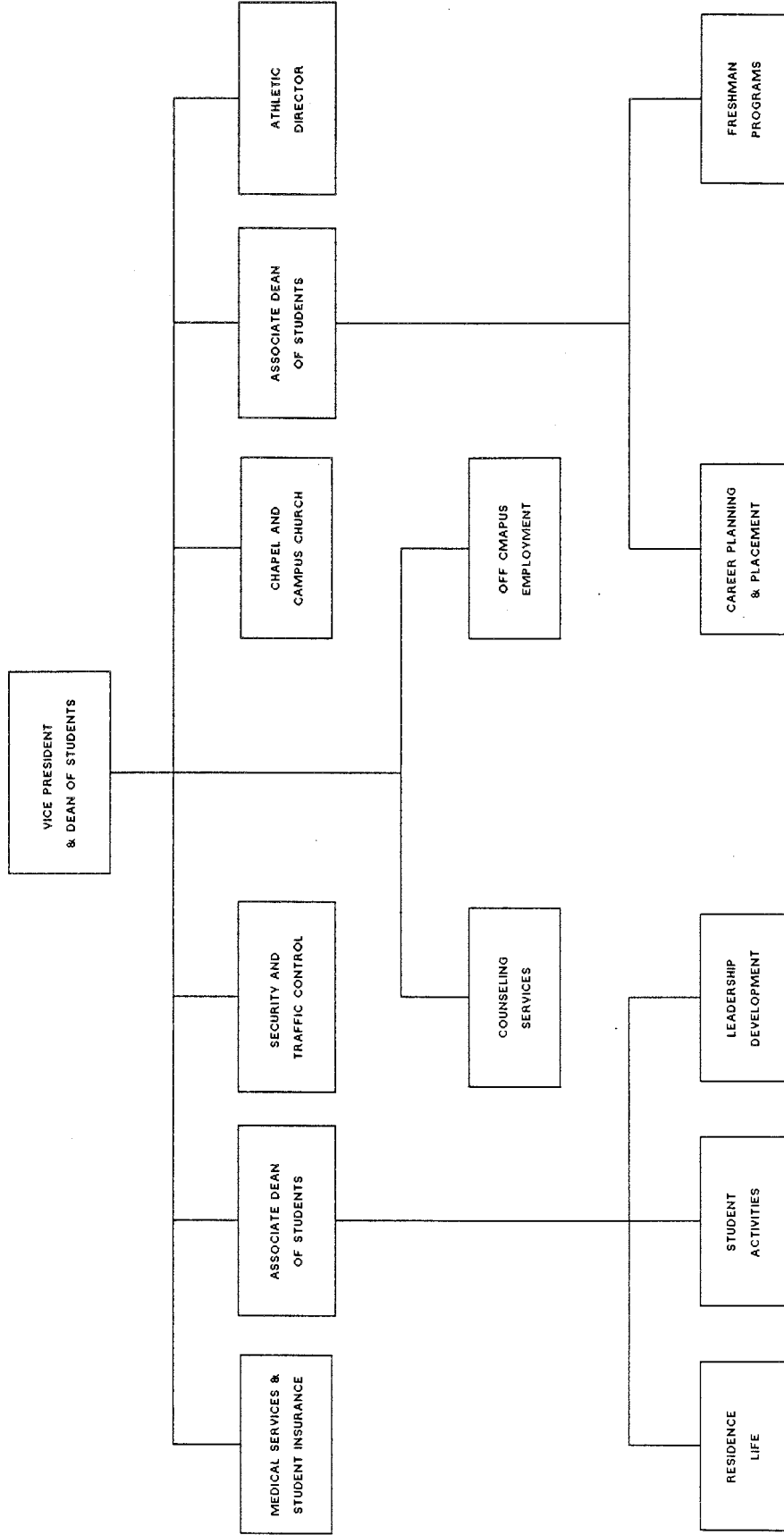
Solid line = Academic Divisions
Dotted line = staff support

Prepared by Ron Ruegsegger

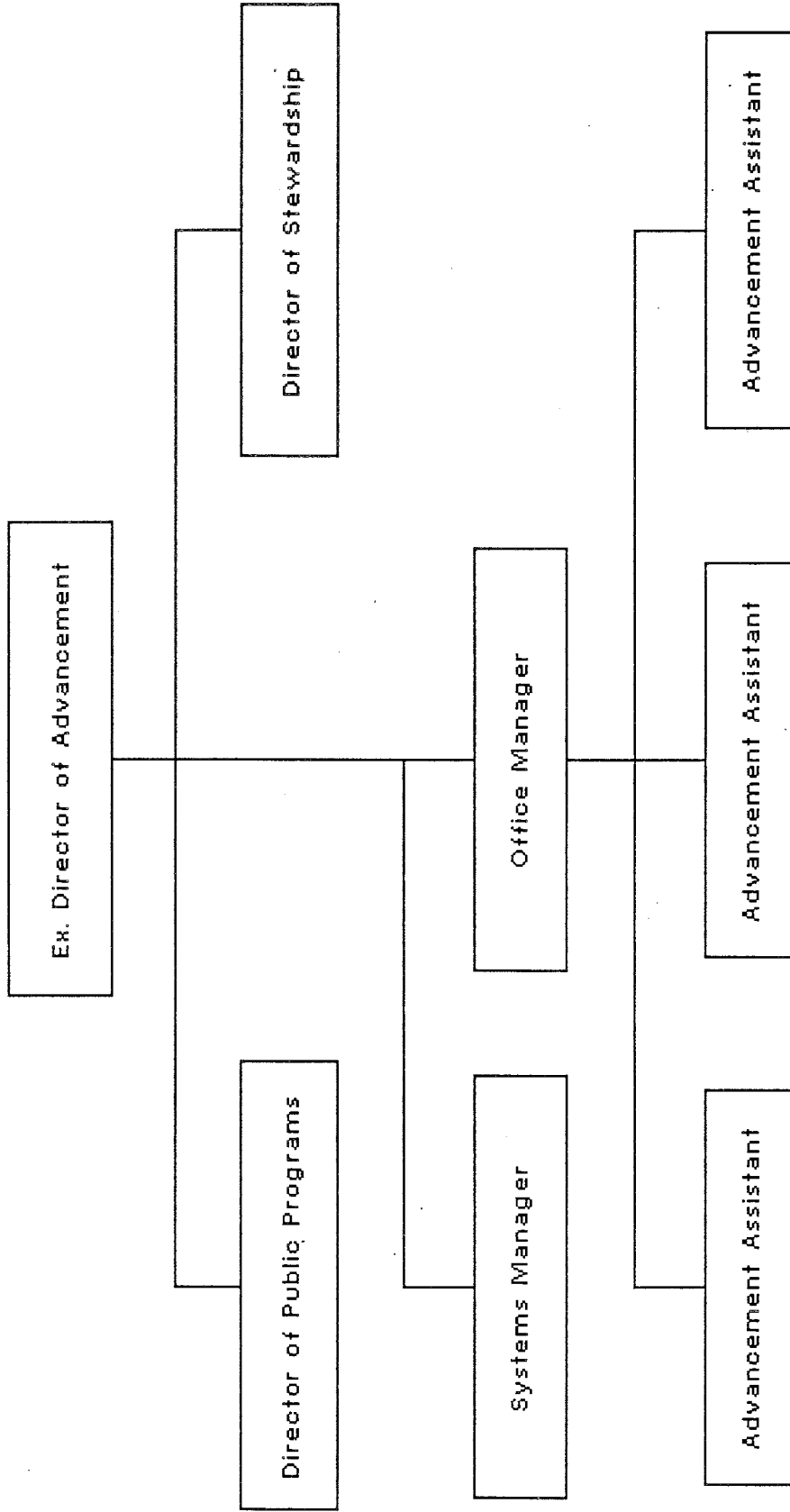
NYACK COLLEGE FINANCE



NYACK COLLEGE STUDENT DEVELOPMENT



NYACK COLLEGE ADVANCEMENT



STUDENTS

ENROLLMENT SUMMARY

The number of students enrolled at Nyack College has decreased since the early 1980s but is on a slow upward trend since 1985-1986. Enrollment increased 6% between the Fall of 1985 and the Fall of 1988 and totalled 544 students for the Fall of 1988.

FTE has also decreased from the early 1980s and has been more stable than the headcount figures. FTE has increased slightly more than 1% since 1985. (Fall FTE for 1985 = 508.8, Fall FTE for 1988 = 516)

Headcount				FTE*
Fall	Nyack Campus	Ext. Sites	Total	
1978	---	---	---	633.8
1979	---	---	---	582.9
1980	561	13	574	551.8
1981	569	33	602	538.4
1982	519	33	552	513.3
1983	544	28	572	540.2
1984	530	39	569	542.3
1985	477	34	511	508.8
1986	490	29	519	504.9
1987	511	35	546	503.1
1988	514	30	544	516

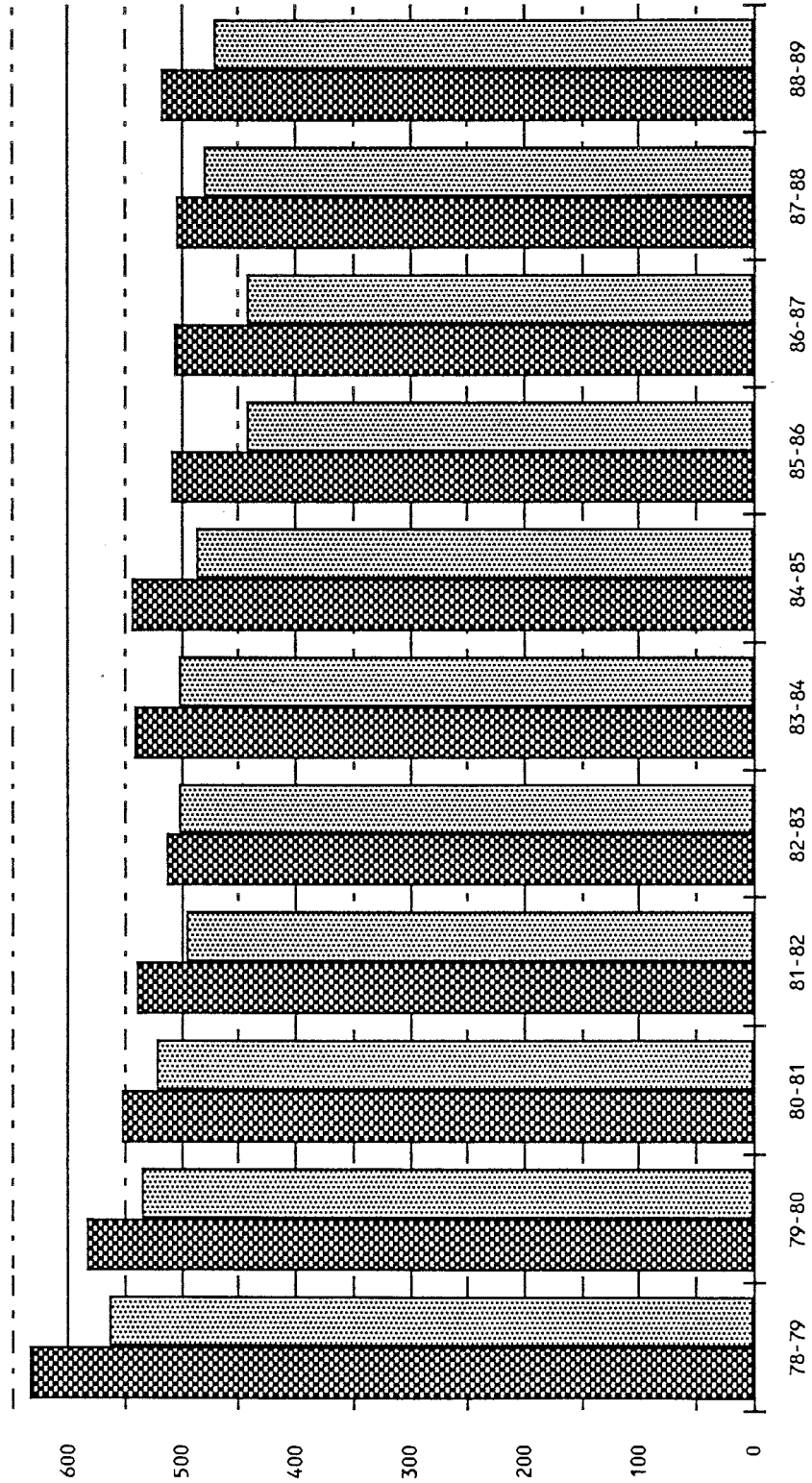
*(Includes extensions)

FTE ENROLLMENT

Full-Time Equivalency

1978-79 TO 1988-89

700

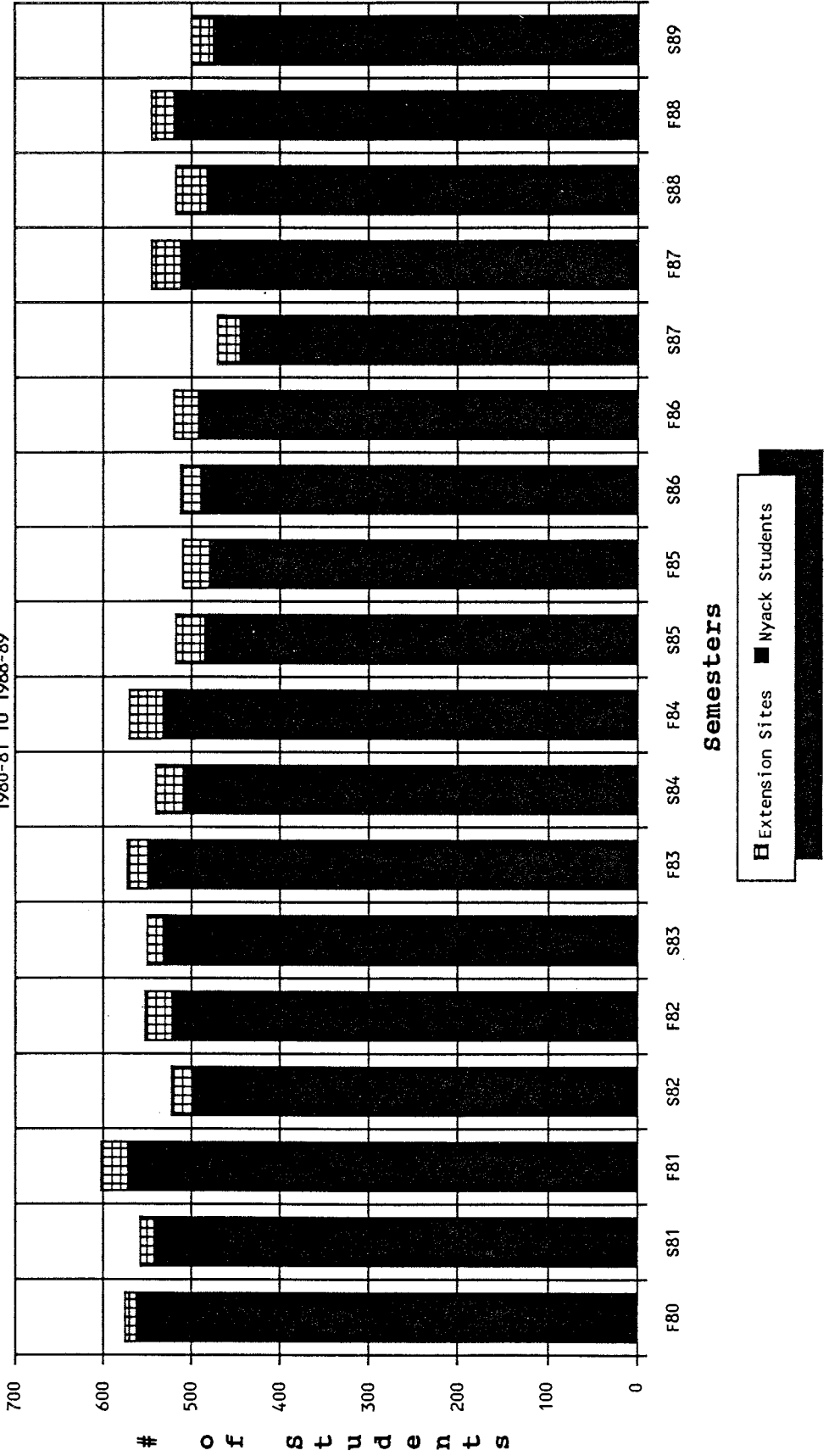


Semesters

Extension Sites included

HEAD COUNT ENROLLMENT

1980-81 TO 1988-89



ENROLLMENT BY STATE OF ORIGIN

Approximately 50% of our student population continues to be classified as residents of New York State. For the Fall of 1988 49% of the students were from within the state, compared to 48.5% in the Fall of 1977.

New Jersey and Pennsylvania contribute approximately 20 to 25% of our students. When comparing the 1977 figures to the 1988 figures, the percentage of students from New Jersey has increased from 9.8% to 12.8%, and students from Pennsylvania decreased from 13% to 9.3%.

The state that is the next largest contributor of students is Ohio. Approximately 5 to 6% of Nyack students are classified as Ohio residents.

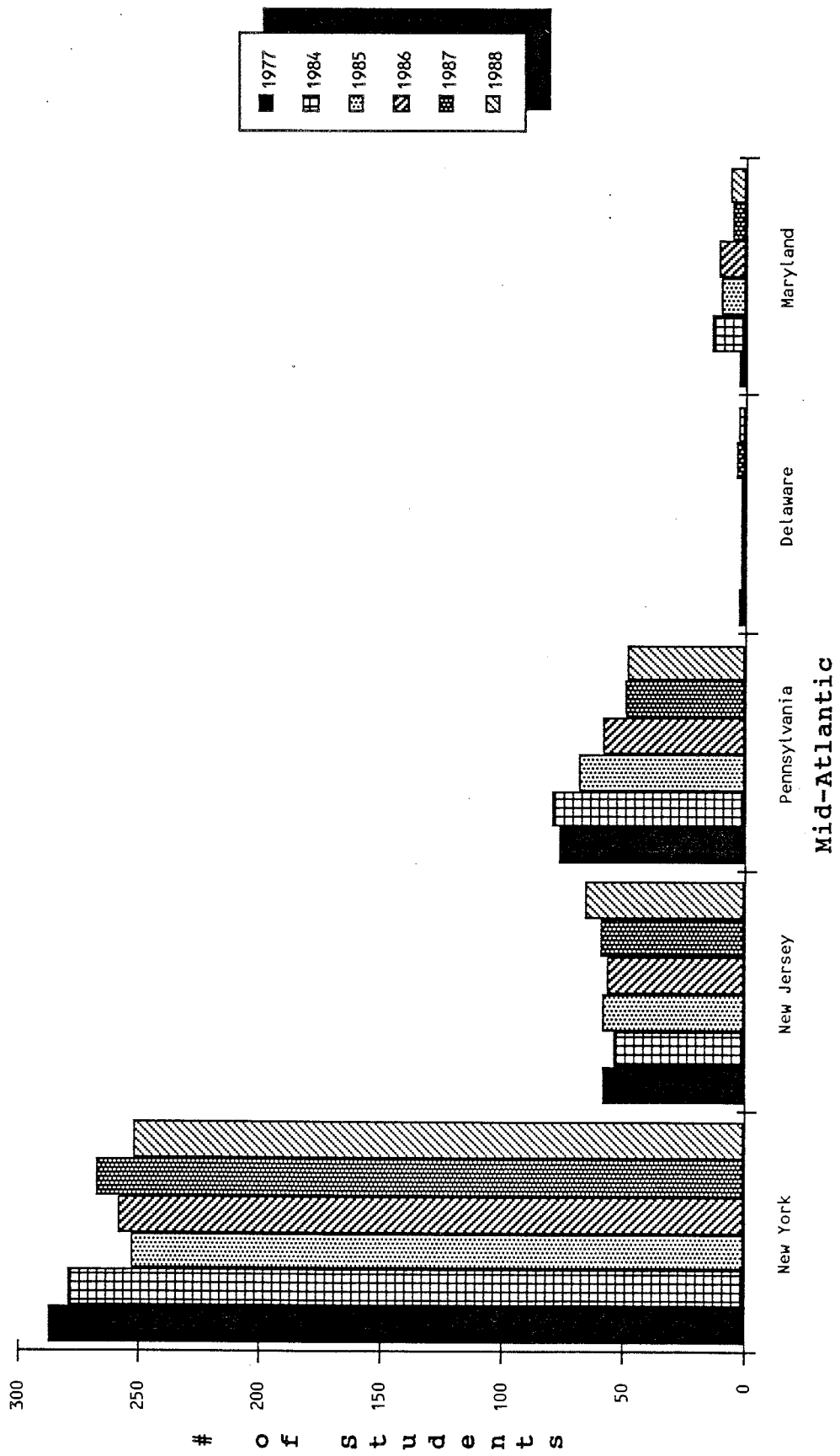
	77-78		84-85		85-86		86-87		87-88		88-89	
	#	%	#	%	#	%	#	%	#	%	#	%
NEW YORK	287	48.5%	279	49.3%	253	50.0%	258	50.0%	267	52.3%	252	49.3%
OTHER MID-ATLANTIC												
New Jersey	58	9.8%	54	9.5%	58	11.5%	57	11.0%	59	11.5%	66	12.9%
Pennsylvania	77	13.0%	79	14.0%	68	13.4%	58	11.2%	49	9.6%	48	9.4%
Delaware	3	0.5%	2	0.4%	2	0.4%	2	0.4%	4	0.8%	3	0.6%
Maryland	3	0.5%	14	2.5%	10	2.0%	11	2.1%	6	1.2%	7	1.4%
NEW ENGLAND												
Maine	14	2.4%	6	1.1%	8	1.6%	6	1.2%	5	1.0%	5	1.0%
Vermont	5	0.8%	10	1.8%	9	1.8%	8	1.6%	12	2.3%	17	3.3%
New Hampshire	4	0.7%	3	0.5%	2	0.4%	7	1.4%	12	2.3%	12	2.3%
Massachusetts	25	4.2%	16	2.8%	12	2.4%	12	2.3%	8	1.6%	9	1.8%
Rhode Island	1	0.2%	0	0.0%	0	0.0%	3	0.6%	3	0.6%	3	0.6%
Connecticut	18	3.0%	15	2.7%	10	2.0%	10	1.9%	10	2.0%	11	2.2%
MID-WEST												
Ohio	39	6.6%	34	6.0%	25	4.9%	25	4.8%	28	5.5%	28	5.5%
Illinois	5	0.8%	4	0.7%	2	0.4%	1	0.2%	1	0.2%	1	0.2%
Indiana	3	0.5%	1	0.2%	1	0.2%	2	0.4%	1	0.2%	0	0.0%
Michigan	2	0.3%	5	0.9%	8	1.6%	4	0.8%	3	0.6%	1	0.2%
Minnesota	0	0.0%	0	0.0%	0	0.0%	0	0.0%	2	0.4%	1	0.2%
West Virginia	3	0.5%	4	0.7%	4	0.8%	4	0.8%	2	0.4%	1	0.2%
SOUTH												
Alabama	1	0.2%	0	0.0%	0	0.0%	1	0.2%	1	0.2%	1	0.2%
Florida	14	2.4%	14	2.5%	9	1.8%	10	1.9%	8	1.6%	15	2.9%
Georgia	0	0.0%	0	0.0%	2	0.4%	1	0.2%	1	0.2%	2	0.4%
Kentucky	1	0.2%	0	0.0%	1	0.2%	1	0.2%	1	0.2%	0	0.0%
North Carolina	8	1.4%	4	0.7%	4	0.8%	4	0.8%	5	1.0%	6	1.2%
South Carolina	0	0.0%	1	0.2%	0	0.0%	1	0.2%	0	0.0%	2	0.4%
Tennessee	0	0.0%	0	0.0%	0	0.0%	0	0.0%	1	0.2%	1	0.2%
Virginia	5	0.8%	5	0.9%	8	1.6%	6	1.2%	8	1.6%	6	1.2%
WEST												
California	2	0.3%	2	0.4%	0	0.0%	1	0.2%	2	0.4%	3	0.6%
Washington		0.0%	1	0.2%	0	0.0%	2	0.4%	2	0.4%	2	0.4%
Other	4	0.7%	6	1.1%	4	0.8%	1	0.2%	4	0.8%	10	2.0%
INTERNATIONAL	10	1.7%	7	1.2%	6	1.2%	20	3.9%	6	1.2%	1	0.2%
TOTAL	592		566		506		516		511		514	

Source: Registrar's Office

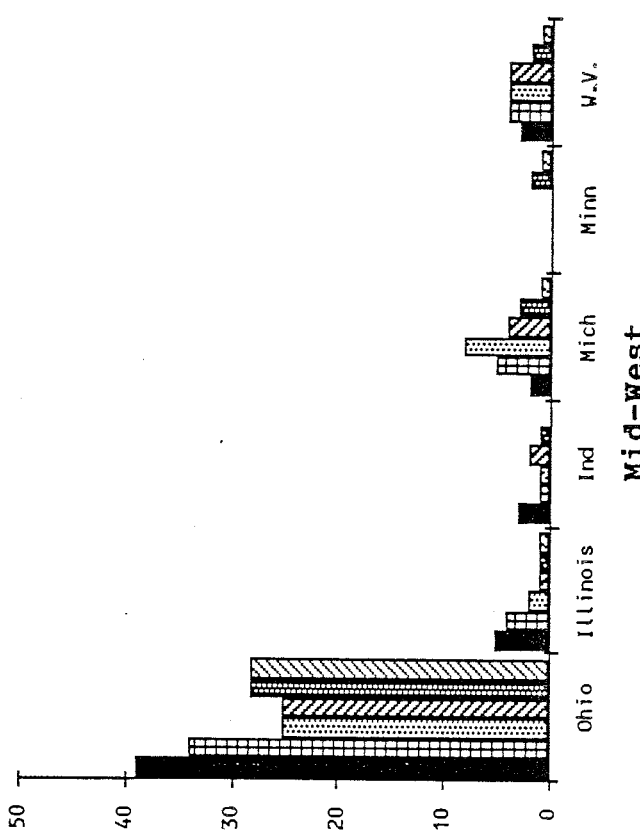
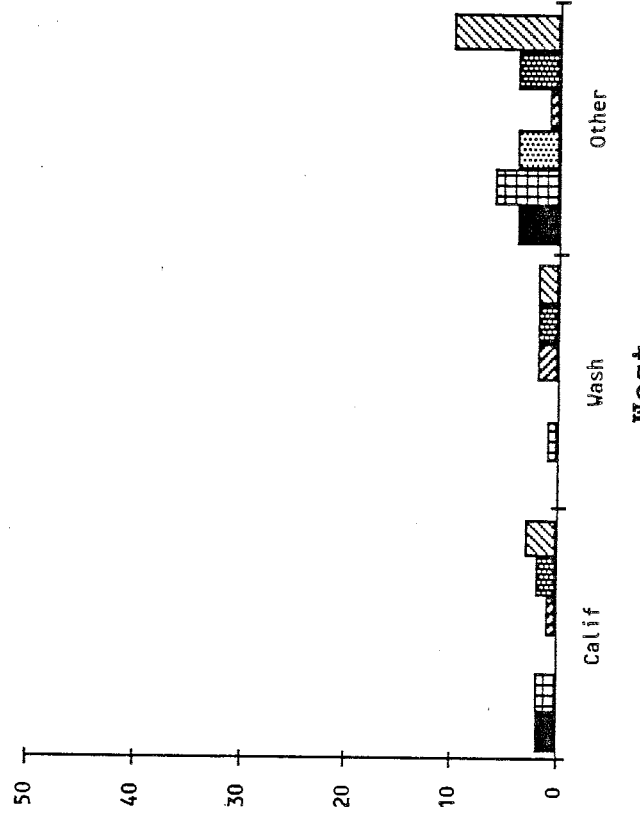
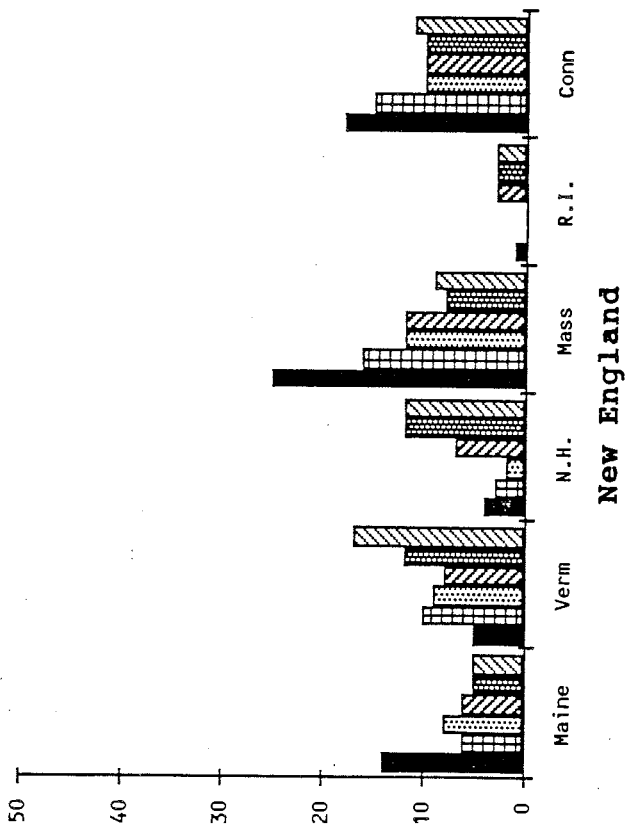
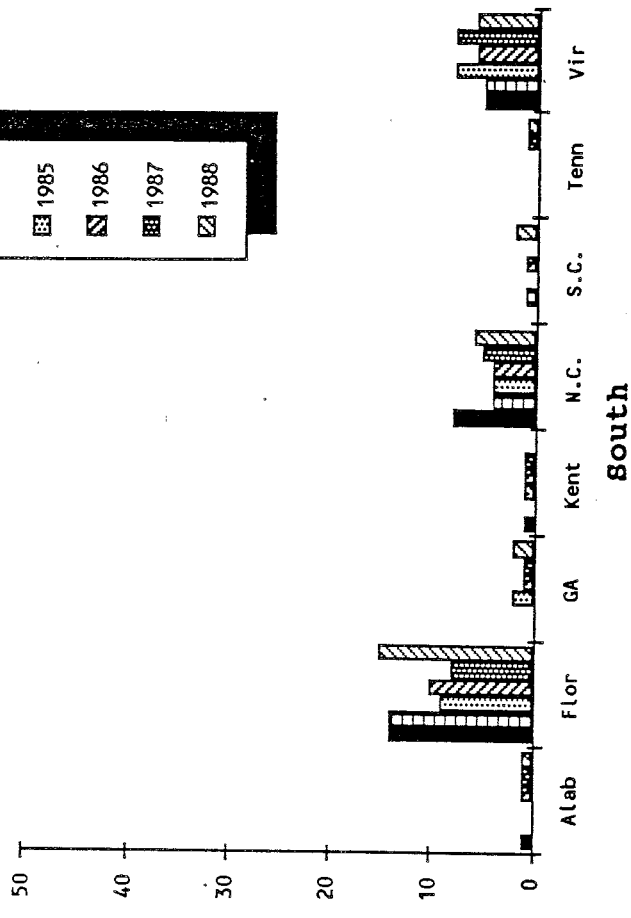
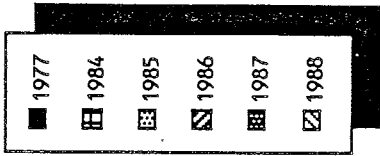
IR/kf

6/89

ENROLLMENT BY STATE OF ORIGIN



ENROLLMENT BY STATE OF ORIGIN



ENROLLMENT BY NEW YORK COUNTY

An average of 32% of Nyack's students are from Rockland County. (the % is based on the selected years shown below) Other counties that report the highest average percentages are Brooklyn (6%), Queens (6%), Westchester (5%), Bronx (5%), Manhattan (4%), Orange (3%), and Suffolk (3%).

	83-84	%	84-85	%	85-86	%	86-87	%	87-88	%	88-89	%
Albany	1	0.4%			0	0.0%			3	1.0%	4	1.7%
Allegany	4	1.7%			3	1.3%			1	0.3%	2	0.8%
Broome	3	1.2%			4	1.7%			5	1.7%	4	1.7%
Cattaraugus	0	0.0%			0	0.0%			0	0.0%	0	0.0%
Cayuga	1	0.4%			0	0.0%			2	0.7%	1	0.4%
Chautauqua	5	2.1%			1	0.4%			1	0.3%	1	0.4%
Chemung	6	2.5%			2	0.9%			1	0.3%	1	0.4%
Chenango	2	0.8%			3	1.3%			4	1.4%	3	1.3%
Clinton	1	0.4%			0	0.0%			0	0.0%	0	0.0%
Columbia	3	1.2%			3	1.3%			4	1.4%	3	1.3%
Cortland	0	0.0%			0	0.0%			0	0.0%	0	0.0%
Delaware	5	2.1%			0	0.0%			2	0.7%	3	1.3%
Dutchess	3	1.2%			4	1.7%			4	1.4%	5	2.1%
Erie	4	1.7%			3	1.3%			4	1.4%	7	2.9%
Essex	0	0.0%			0	0.0%			0	0.0%	1	0.4%
Franklin	0	0.0%			0	0.0%			0	0.0%	0	0.0%
Fulton	4	1.7%			1	0.4%			0	0.0%	1	0.4%
Genesee	0	0.0%			1	0.4%			0	0.0%	0	0.0%
Greene	1	0.4%			1	0.4%			1	0.3%	2	0.8%
Hamilton	0	0.0%			1	0.4%			0	0.0%	0	0.0%
Herkimer	1	0.4%			4	1.7%			7	2.4%	7	2.9%
Jefferson	1	0.4%			2	0.9%			3	1.0%	1	0.4%
Lewis	0	0.0%			0	0.0%			0	0.0%	0	0.0%
Livingston	0	0.0%			0	0.0%			0	0.0%	0	0.0%
Madison	0	0.0%			0	0.0%			0	0.0%	0	0.0%
Monroe	1	0.4%			4	1.7%			3	1.0%	2	0.8%
Montgomery	1	0.4%			1	0.4%			2	0.7%	2	0.8%
Nassau	5	2.1%			3	1.3%			6	2.1%	8	3.3%
New York												
Manhattan	13	5.4%			8	3.5%			8	2.8%	8	3.3%
Bronx	8	3.3%			15	6.6%			21	7.3%	10	4.2%
Brooklyn	10	4.1%			13	5.7%			20	7.0%	15	6.3%
Queens	12	5.0%			12	5.2%			27	9.4%	15	6.3%
Richmond	1	0.4%			4	1.7%			8	2.8%	6	2.5%
Niagara	1	0.4%			1	0.4%			0	0.0%	0	0.0%
Oneida	5	2.1%			4	1.7%			4	1.4%	5	2.1%
Onondaga	2	0.8%			2	0.9%			8	2.8%	8	3.3%
Ontario	1	0.4%			1	0.4%			0	0.0%	0	0.0%
Orange	6	2.5%			9	3.9%			11	3.8%	5	2.1%
Orleans	0	0.0%			0	0.0%			0	0.0%	0	0.0%
Oswego	6	2.5%			3	1.3%			3	1.0%	5	2.1%
Otsego	2	0.8%			1	0.4%			0	0.0%	0	0.0%
Putnam	2	0.8%			0	0.0%			0	0.0%	1	0.4%
Rensselaer	2	0.8%			1	0.4%			1	0.3%	1	0.4%
Rockland	81	33.6%			70	30.6%			94	32.8%	70	29.3%
St. Lawrence	0	0.0%			5	2.2%			0	0.0%	0	0.0%
Saratoga	3	1.2%			1	0.4%			2	0.7%	2	0.8%
Schenectady	1	0.4%			0	0.0%			2	0.7%	2	0.8%
Schoharie	1	0.4%			1	0.4%			0	0.0%	0	0.0%

	83-84	%	84-85	%	85-86	%	86-87	%	87-88	%	88-89	%
Schuyler	0	0.0%			0	0.0%			1	0.3%	0	0.0%
Seneca	0	0.0%			0	0.0%			0	0.0%	0	0.0%
Steuben	3	1.2%			1	0.4%			1	0.3%	0	0.0%
Suffolk	6	2.5%			10	4.4%			7	2.4%	9	3.8%
Sullivan	3	1.2%			2	0.9%			2	0.7%	1	0.4%
Tioga	0	0.0%			3	1.3%			0	0.0%	0	0.0%
Tompkins	0	0.0%			2	0.9%			2	0.7%	1	0.4%
Ulster	2	0.8%			2	0.9%			1	0.3%	3	1.3%
Warren	1	0.4%			4	1.7%			2	0.7%	1	0.4%
Washington	2	0.8%			0	0.0%			0	0.0%	0	0.0%
Wayne	1	0.4%			0	0.0%			1	0.3%	1	0.4%
Westchester	14	5.8%			13	5.7%			8	2.8%	12	5.0%
Wyoming	0	0.0%			0	0.0%			0	0.0%	0	0.0%
Yates	0	0.0%			0	0.0%			0	0.0%	0	0.0%
TOTALS	241				229				287		239	

NOTE: Data for 84-85, and 86-87 not available

Source: Registrar's Office
 IR/kf
 6/89

ENROLLMENT BY DENOMINATIONAL AFFILIATION

	77 - 78		84 - 85		85 - 86		86 - 87		87 - 88		88 - 89	
	#	%	#	%	#	%	#	%	#	%	#	%
C & M A	288	48.0%	331	58.2%	288	56.4%	265	51.3%	281	55.1%	279	54.7%
Assemblies of God	15	2.5%	7	1.2%	10	2.0%	11	2.1%	14	2.7%	17	3.3%
Baptist	61	10.2%	57	10.0%	56	11.0%	59	11.4%	46	9.0%	47	9.2%
Bible Fellowship		0.0%		0.0%		0.0%	3	0.6%	3	0.6%	2	0.4%
Brethren	4	0.7%	3	0.5%	2	0.4%	2	0.4%	1	0.2%	0	0.0%
Christian Church	1	0.2%	1	0.2%	2	0.4%	2	0.4%	1	0.2%	1	0.2%
Christian Reformed	2	0.3%	1	0.2%	2	0.4%	4	0.8%	2	0.4%	4	0.8%
Church of God	1	0.2%	4	0.7%	1	0.2%	2	0.4%	2	0.4%	2	0.4%
Congregational	5	0.8%	4	0.7%	2	0.4%	3	0.6%	4	0.8%	2	0.4%
Conservative Baptist	5	0.8%	7	1.2%	5	1.0%	7	1.4%	4	0.8%	2	0.4%
Episcopal	1	0.2%		0.0%	1	0.2%	1	0.2%	2	0.4%	1	0.2%
Evangelical	7	1.2%	2	0.4%		0.0%		0.0%		0.0%		0.0%
Evangelical Free	15	2.5%	6	1.1%	13	2.5%	16	3.1%	15	2.9%	13	2.5%
Free Methodist		0.0%		0.0%		0.0%	2	0.4%	1	0.2%		0.0%
Friends		0.0%		0.0%		0.0%		0.0%	1	0.2%	1	0.2%
Full Gospel	2	0.3%	1	0.2%	1	0.2%	1	0.2%	1	0.2%	1	0.2%
Holiness	1	0.2%		0.0%		0.0%		0.0%	1	0.2%	1	0.2%
Independent	15	2.5%	15	2.6%	10	2.0%	7	1.4%	6	1.2%	8	1.6%
Independent Baptist		0.0%	6	1.1%	2	0.4%	2	0.4%	2	0.4%		0.0%
Inter-Denominational	1	0.2%	1	0.2%		0.0%		0.0%		0.0%	1	0.2%
Lutheran	3	0.5%	2	0.4%	2	0.4%	2	0.4%	2	0.4%	2	0.4%
Methodist	12	2.0%	16	2.8%	10	2.0%	12	2.3%	6	1.2%	5	1.0%
Nazarene	6	1.0%	1	0.2%	1	0.2%	2	0.4%	2	0.4%	2	0.4%
New Testament		0.0%		0.0%		0.0%	1	0.2%	1	0.2%	1	0.2%
Non-Denominational	94	15.7%	36	6.3%	45	8.8%	43	8.3%	51	10.0%	45	8.8%
Orthodox		0.0%		0.0%		0.0%		0.0%	1	0.2%		0.0%
Pentecostal	13	2.2%	14	2.5%	16	3.1%	13	2.5%	15	2.9%	19	3.7%
Presbyterian	24	4.0%	23	4.0%	16	3.1%	14	2.7%	16	3.1%	16	3.1%
Protestant	2	0.3%		0.0%		0.0%		0.0%	0	0.0%	3	0.6%
Reformed Church	4	0.7%	1	0.2%	1	0.2%	3	0.6%	2	0.4%	1	0.2%
Roman Catholic		0.0%		0.0%		0.0%	4	0.8%	1	0.2%	1	0.2%
Salvation Army		0.0%	1	0.2%	2	0.4%	1	0.2%	5	1.0%	3	0.6%
Southern Baptist	1	0.2%		0.0%	1	0.2%	1	0.2%		0.0%	1	0.2%
United Missionary		0.0%		0.0%		0.0%		0.0%	1	0.2%	1	0.2%
United Methodist	9	1.5%	1	0.2%		0.0%		0.0%	5	1.0%	5	1.0%
United Presbyterian	2	0.3%		0.0%		0.0%		0.0%	1	0.2%	1	0.2%
Wesleyan		0.0%	1	0.2%	1	0.2%	2	0.4%	1	0.2%	1	0.2%
Undesignated		0.0%	15	2.6%	16	3.1%	29	5.6%	13	2.5%	24	4.7%
Other	6	1.0%	12	2.1%	5	1.0%	3	0.6%		0.0%	1	0.2%
TOTAL	=====		=====		=====		=====		=====		=====	
	600		569		511		517		510		514	

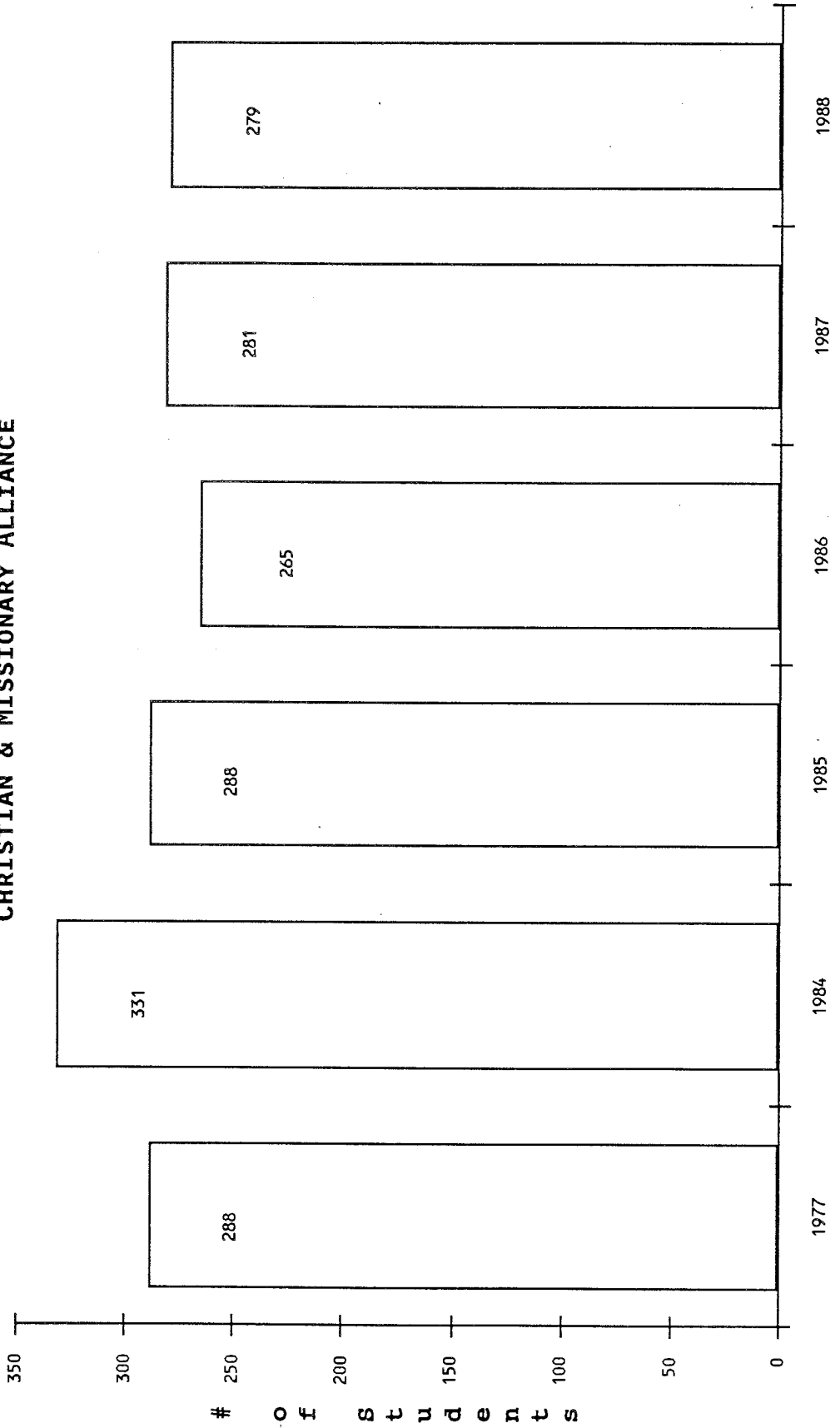
Source: Registrar's Office

IR/kf

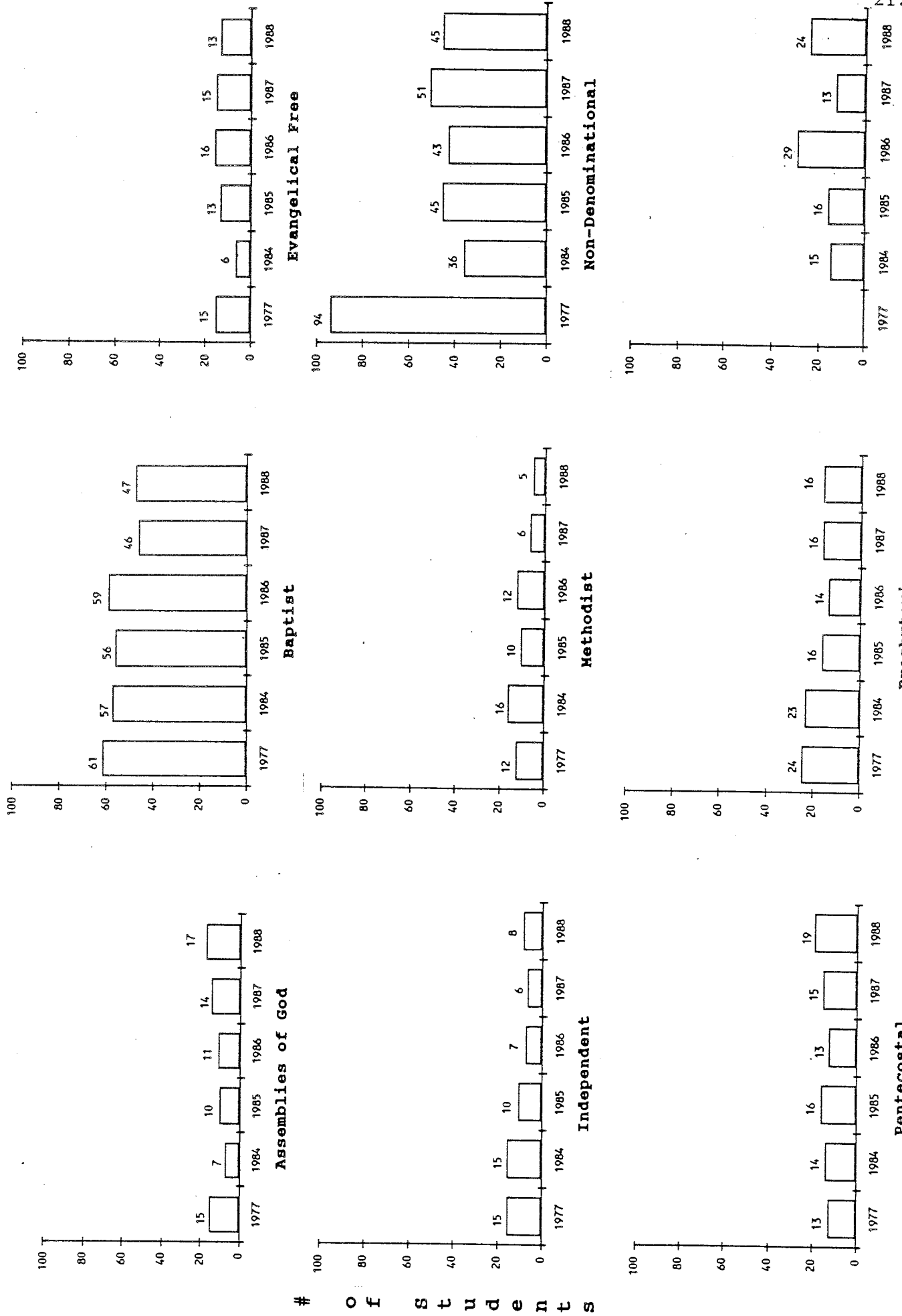
Jul-89

ENROLLMENT BY DENOMINATIONAL AFFILIATION

CHRISTIAN & MISSIONARY ALLIANCE



ENROLLMENT BY DENOMINATIONAL AFFILIATION



of students

ENROLLMENT BY RACE, GENDER, AGE AND MARITAL STATUS

The student body of Nyack College is composed of 81% white students and 19% of minority students. The percentage of white students has decreased slightly over the past five years (84.1% in 1984 to 81.3% in 1988) while the percentage of minorities has slightly increased (14.7% in 1984 to 18.8% in 1988). The largest increase has been among Asian students, an increase of 2.4%. Black students have increased less than 1% since 1984.

There are generally more female students than male students. (53% female, 47% male) There are also considerably more single students (88%) compared to married students (12%). (Data based on 1984 to 1988 averages)

Enrollment by Race										
RACE	84-85		85-86		86-87		87-88		88-89	
	#	%	#	%	#	%	#	%	#	%
Black Non-Hispanic	29	5.5%	25	5.2%	40	8.2%	32	6.3%	31	6.1%
Hispanic	15	2.8%	15	3.1%	20	4.1%	17	3.3%	20	3.9%
Asian American	34	6.4%	30	6.3%	29	5.9%	37	7.2%	45	8.8%
White Non-Hispanic	445	84.1%	405	84.9%	401	81.8%	420	82.2%	416	81.3%
Non-Resident Alien	6	1.1%	2	0.4%	0	0.0%	5	1.0%		0.0%
TOTAL	<u>529</u>		<u>477</u>		<u>490</u>		<u>511</u>		<u>512</u>	

Source: Registrar's Office
IR/kf
Jun-89

Enrollment by Gender										
	84-85		85-86		86-87		87-88		88-89	
	#	%	#	%	#	%	#	%	#	%
Male	266	47%	242	47%	239	51%	244	47%	212	41%
Female	305	53%	271	53%	230	49%	275	53%	303	59%
Total	<u>571</u>		<u>513</u>		<u>469</u>		<u>519</u>		<u>515</u>	

Source: Registrar's Office
IR/kf
Jun-89

ENROLLMENT BY AGE																
AGE DISTRIBUTION	84-85			85-86			86-87			87-88			88-89			
	M	F	%	M	F	%	M	F	%	M	F	%	M	F	%	
15-19	77	118	34.2%	67	106	30.3%	48	113	28.2%	61	127	32.9%	29	63	16.1%	
20-24	134	140	48.0%	115	127	42.4%	114	65	31.3%	118	119	41.5%	133	199	58.1%	
25-29	30	20	8.8%	33	16	8.6%	34	22	9.8%	34	20	9.5%	24	22	8.1%	
30-34	13	7	3.5%	15	7	3.9%	25	7	5.6%	18	5	4.0%	14	6	3.5%	
35+	12	20	5.6%	12	15	4.7%	18	23	7.2%	13	4	3.0%	12	13	4.4%	

NOTE: Percentages include the total of male and female in each age group.

Source: Registrar's Office
IR/kf
Jun-89

EN-A&G

ENROLLMENT BY MARITAL STATUS													
MARITAL STATUS	77-78		84-85		85-86		86-87		87-88		88-89		
	M	F	M	F	M	F	M	F	M	F	M	F	
Married-Campus Housing	18	3	18	3	19	2	20	2	20	2	13	9	
Married-Commuter	32	13	17	24	20	19	19	23	21	17	11	13	
Total	50	16	35	27	39	21	39	25	41	19	24	22	
Total Married	66		62		60		64		60		46		
Single Resident	*	*	190	231	161	215	147	219	156	227	156	264	
Single-Commuter	*	*	7	38	18	23	25	35	29	39	14	16	
Total	*	*	197	269	179	238	172	254	185	266	170	280	
Total Single	*		466		417		426		451		450		
Total Married and Single	66		528		477		490		511		496		

Source: Registrar's Office & Dean of Student's Office
IR/kf
Aug-89

* Data not available

ENR-MAR

ANNUAL SUMMARY OF VOCATIONAL AND EDUCATION PREFERENCE

Approximately 62% of Nyack's students intend to pursue a church related vocation and 39% intend to pursue a non-church related vocation. (data based on averaging data from 1978 to 1989) This trend has slowly been shifting to a slightly higher percentage of students intending non-church related vocations. (1979 - Church related vocations = 61%, compared to 47% in 1989; 1979 - Non-church related vocations = 39%, compared to 50% in 1989)

In fact, this past year (Spring of 1989) was the first time that there was a higher percentage of students intending non-church related vocations than students intending church related vocations (see graph on next page).

The largest change has occurred in an increase in the number of students planning on entering the field of business (2% in 1979 and 10% in 1989).

CHURCH RELATED VOCATIONS

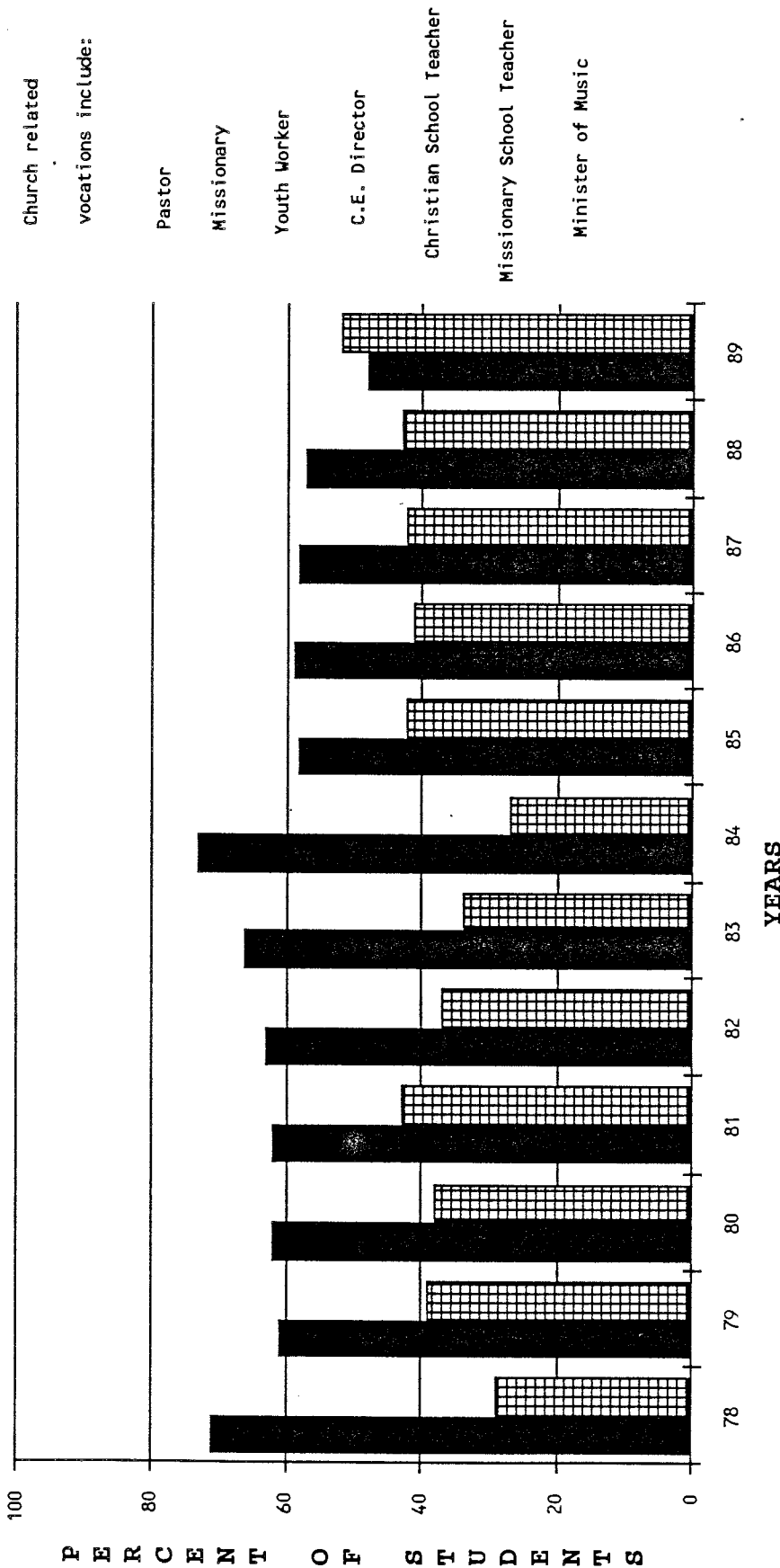
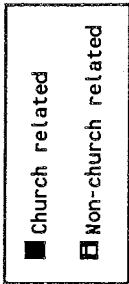
	1979	%	1985	%	1986	%	1987	%	1988	%	1989	%
Missionary	132	16%	86	21%	85	20%	73	18%	71	16%	51	13%
Pastor	101	12%	54	13%	53	12%	53	13%	67	15%	34	9%
Church Youth Worker	58	7%	19	5%	27	6%	20	5%	22	5%	30	8%
Music /Minister of Music	56	7%	18	4%	22	5%	26	6%	25	6%	13	3%
Missionary Teacher	40	5%	15	4%	17	4%	14	3%	15	3%	18	5%
Teacher (Christian School)	59	7%	15	4%	15	4%	27	7%	30	7%	27	7%
Director of Christian Ed	23	3%	7	2%	5	1%	5	1%	10	2%	2	1%
Other	32	4%	18	4%	12	3%	4	1%	14	3%	4	1%
Total	501	61%	232	55%	236	56%	222	55%	254	56%	179	47%

NON-CHURCH RELATED VOCATIONS

Psychological Counselor	61	7%	25	6%	29	7%	25	6%	36	8%	27	7%
Business Person	20	2%	10	2%	22	5%	31	8%	30	7%	37	10%
Social Worker	54	7%	16	4%	13	3%	24	6%	26	6%	27	7%
Public Elementary Teacher	65	8%	84	20%	78	18%	41	10%	47	10%	50	13%
Public Secondary Teacher	30	4%	5	1%	2	0%	10	2%	15	3%	15	4%
College Professor	30	4%	5	1%	4	1%	10	2%	10	2%	6	2%
Nurse	12	1%	4	1%	0	0%	3	1%	5	1%	2	1%
Lawyer	3	0%	4	1%	6	1%	3	1%	4	1%	4	1%
Other	51	6%	15	4%	12	3%	13	3%	15	3%	24	6%
Total	326	39%	168	40%	166	39%	160	40%	188	42%	192	50%

Source: Academic Office
IR/kf
Aug-89

VOCATIONAL INTENTIONS



Data based on spring survey of all Nyack students

FRESHMAN PROFILE
BY AVERAGE
SAT SCORE

	77-78	84-85	85-86	86-87	87-88	88-89
SAT SCORE						
Verbal	*	*	455	427	421	431
Math	*	*	450	435	450	464
Total	911	*	905	862	871	895

*Data unavailable

Source: Admissions Office
IR/kf
Aug-89

SAT.WK1

The National Teacher's Exam has been administered to graduating senior Elementary Education majors and Music Education majors seeking certification in New York State since 1983. Listed below are the obtained averages.

The scores over the past six years have remained relatively stable.

NATIONAL TEACHERS EXAMINATION
AVERAGES

	*PASSING SCORES	83-84	84-85	85-86	86-87	87-88	88-89
COMMUNICATION SKILLS	650	662 (+12)	665 (+15)	671 (+21)	663 (+13)	665 (+15)	664 (+14)
GENERAL KNOWLEDGE	648	654 (+6)	658 (+10)	667 (+19)	659 (+11)	660 (+12)	659 (+11)
PROFESSIONAL KNOWLEDGE	646	661 (+15)	657 (+11)	664 (+18)	659 (+13)	655 (+9)	658 (+12)

*Established by New York State

(The number in the parentheses indicates the difference from the passing score)

Source: Education Department
IR/kf
Jun-89

NTE-EXAM

RESULTS FROM MAJOR FIELD ACHIEVEMENT TESTS

The Major Field Achievement Tests were chosen as the replacement for the UAP exam. They were administered for the first time in April, 1989 to seniors majoring in Education, English, History, Music, Psychology and Sociology. They were produced by the Educational Testing Service and are designed to assess the mastery of concepts, principles, and knowledge expected of students at the conclusion of a major in a specific subject area.

Overall student performance for graduates of the music and education departments was above average for all areas of the exams.

In the Psychology and Social Science Departments, the student average was just slightly below average. Since the number of students who took the History and Literature exams were very small the results are questionable.

	OVERALL MEASURES	NORMATIVE MEAN	NYACK COLLEGE MEAN	DIFFERENCE BETWEEN MEANS	
	OVERALL MEASURES	Total Score	52.2	57.2	5
EDUCATION	ASSESSMENT INDICATORS	1. Educational Goals	46.1	51.6	5.5
		2. Admin & Supervision of Schools	53.8	54.9	1.1
		3. Curriculum Development/ Organization	51	56	5
		4. Teaching-Learning	51.8	56.9	5.1
		5. Evaluation and Research Appraisal	51.8	65.2	13.4
	OVERALL MEASURES	Total Score	42.5	50.8	8.3
SIC		Subscore 1: Theory	44.1	55.2	11.1
		Subscore 2: History and Literature	41.6	46.9	5.3
		ASSESSMENT INDICATORS	1. Fundamentals	47.5	59.3
		2. Specialties	37.3	47.2	9.9
	OVERALL MEASURES	Total Score	50.4	48.8	-1.6
PSYCHOLOGY	ASSESSMENT INDICATORS	Subscore 1: Experimental	47.2	43.4	-3.8
		Subscore 2: Social	54.2	54.3	0.1
		1. Learning Cognition and Perception	49.7	48.4	-1.3
		2. Ethology and Comp- arative Psychology	41	32.8	-8.2
		3. Sensory and physio- logical	50.8	43.1	-7.7
		4. Developmental	51.5	50.8	-0.7
		5. Clinical, Abnormal and Personality	58	55.9	-2.1
6. Social	53	55.3	2.3		
		7. Measurement and Methodology	49.5	54.8	5.3

OVERALL MEASURES		NORMATIVE MEAN	NYACK COLLEGE MEAN	DIFFERENCE BETWEEN MEANS	
OVERALL MEASURES		Total Score	46.8	45.1	-1.7
SOCIOLOGY	ASSESSMENT INDICATORS	1. Methodology and Statistics	41.3	46.4	5.1
		2. General Theory	38.9	40.3	1.4
		3. Demography & Urban/ Rural Sociology	41.5	45.7	4.2
		4. Social Psychology	41	35.7	-5.3
		5. Social Stratifica- tion	49.9	50	0.1
		6. Race and Ethnic Relations	35.5	40.6	5.1
		7. Deviance and Social Control	63.8	48.9	-14.9
		8. Social Inst/Complex Orgs/Soc Change	52.6	49.6	-3
OVERALL MEASURES		Total Score	45.7	*46.3	0.6
HISTORY	Subscore 1: European History		44.2	*44.3	0.1
	Subscore 2: United States History		47.3	*49	1.7
LITERATURE	OVERALL MEASURES	Total Score	52.1	*48.5	-3.6

*Data for History and Literature are based on samples of < 5 students

Source: Institutional Research Office
IR/kf
Jun-89

RETENTION RATES FALL ENROLLMENT OF FRESHMEN & TRANSFERS

Retention rates are considerably higher for first time freshmen students than for transfer students for the second year at Nyack. For the Fall of 1988 the freshmen retention rate was 74% and the transfer retention rate was 44%.

Year	2nd Yr			3rd Yr		4th Yr		5th Yr	
	Orig #	#	%	#	%	#	%	#	%
1978	216	135	62.5%	106	49.1%	88	40.7%	83	38.4%
1979	220	140	63.6%	104	47.3%	99	45.0%	99	45.0%
1980	185	119	64.3%	100	54.1%	91	49.2%	83	44.9%
1981	172	116	67.4%	90	52.3%	79	45.9%	77	44.8%
1982	157	118	75.2%	91	58.0%	83	52.9%	82	52.2%
1983	200	131	65.5%	96	48.0%	82	41.0%	76	38.0%
1984	192	116	60.4%	91	47.4%	87	45.3%	84	43.8%
1985	162	102	63.0%	83	51.2%	69	42.6%		
1986	176	111	63.1%	86	48.9%				
1987	190	123	64.7%						
1988	196								

The first column represents matriculated students enrolled for the first time at Nyack College. The succeeding columns represent the number and percent of students from the original group who have graduated or are returning for the fall term of the next year. Extension students are not included.

Source: Registrar's Office
IR/kf
Dec-89

RETENTION RATES FALL ENROLLMENT OF FRESHMEN

Year	Orig #	2nd Yr #	%	3rd Yr #	%	4th Yr #	%	5th Yr #	%
1978	155	101	65.2%	78	50.3%	66	42.6%	63	40.6%
1979	160	106	66.3%	79	49.4%	75	46.9%	74	46.3%
1980	127	89	70.1%	75	59.1%	68	53.5%	58	45.7%
1981	126	85	67.5%	65	51.6%	55	43.7%	53	42.1%
1982	103	78	75.7%	59	57.3%	56	54.4%	55	53.4%
1983	145	97	66.9%	68	46.9%	57	39.3%	55	37.9%
1984	141	87	61.7%	67	47.5%	63	44.7%	61	43.3%
1985	113	73	64.6%	57	50.4%	44	38.9%		
1986	123	88	71.5%	69	56.1%				
1987	131	97	74.0%						
1988	136								

The first column represents matriculated students enrolled for the first time at Nyack College. The succeeding columns represent the number and percent of students from the original group who have graduated or are returning for the fall term of the next year. Extension students are not included.

Source: Registrar's Office
IR/kf
Dec-89

RETENTION RATES FALL ENROLLMENT OF TRANSFERS

Year	Orig		2nd Yr		3rd Yr		4th Yr		5th Yr	
	#	#	%	#	%	#	%	#	%	
1978	61	34	55.7%	28	45.9%	22	36.1%	20	32.8%	
1979	60	34	56.7%	25	41.7%	24	40.0%	25	41.7%	
1980	58	30	51.7%	25	43.1%	23	39.7%	25	43.1%	
1981	46	31	67.4%	25	54.3%	24	52.2%	24	52.2%	
1982	54	40	74.1%	32	59.3%	27	50.0%	27	50.0%	
1983	55	34	61.8%	28	50.9%	25	45.5%	21	38.2%	
1984	51	29	56.9%	24	47.1%	24	47.1%	23	45.1%	
1985	49	29	59.2%	26	53.1%	25	51.0%			
1986	53	23	43.4%	17	32.1%					
1987	59	26	44.1%							
1988	60									

The first column represents matriculated students enrolled for the first time at Nyack College. The succeeding columns represent the number and percent of students from the original group who have graduated or are returning for the fall term of the next year. Extension students are not included.

Source: Registrar's Office
IR/kf
Dec-89

CURRICULUM

ENROLLMENT BY CLASS, MAJOR, FULL-TIME AND PART-TIME

In 1988 the two majors with the largest percentage of juniors and seniors were Elementary Education (19%) and Psychology (19%). Other majors that currently have relatively large percentages of students are Bible (11%), English (9%), Social Science (9%) and Music Education (8%).

88-89

	Junior		Senior		Full-Time		Part-Time		Total	
	#	%	#	%	#	%	#	%	#	%
=====										
ASSOCIATE DEGREES										
Associate in Arts	1	1.0%	0	0.0%	1	0.6%	0	0.0%	1	0.6%
Associate in Science	0	0.0%	0	0.0%	0	0.0%	0	0.0%	0	0.0%
PROFESSIONAL MAJORS										
Christian Education	4	4.1%	3	4.0%	7	4.1%	0	0.0%	7	4.1%
Missiology	3	3.1%	0	0.0%	3	1.7%	0	0.0%	3	1.7%
Pastoral Ministry	2	2.1%	0	0.0%	2	1.2%	0	0.0%	2	1.2%
Elementary Education	18	18.6%	14	18.7%	32	18.6%	0	0.0%	32	18.6%
Music Education	6	6.2%	7	9.3%	13	7.6%	0	0.0%	13	7.6%
Interdisciplinary BS	3	3.1%	0	0.0%	2	1.2%	1	0.0%	3	1.7%
Business Administration	4	4.1%	0	0.0%	3	1.7%	1	0.6%	4	2.3%
LIBERAL ARTS MAJORS										
Bible	7	7.2%	12	16.0%	16	9.3%	3	0.0%	19	11.0%
Cross Cultural Studies	2	2.1%	1	1.3%	3	1.7%	0	1.7%	3	1.7%
English	10	10.3%	6	8.0%	13	7.6%	3	0.0%	16	9.3%
History	3	3.1%	3	4.0%	6	3.5%	0	1.7%	6	3.5%
Philosophy	3	3.1%	2	2.7%	5	2.9%	0	0.0%	5	2.9%
Psychology	16	16.5%	16	21.3%	30	17.4%	2	0.0%	32	18.6%
Religion	2	2.1%	0	0.0%	2	1.2%	0	1.2%	2	1.2%
Social Science	11	11.3%	5	6.7%	15	8.7%	1	0.0%	16	9.3%
Interdisciplinary BA	0	0.0%	1	1.3%	1	0.6%	0	0.6%	1	0.6%
MUSIC MAJORS										
Church Music	2	2.1%	1	1.3%	3	1.7%	0	0.0%	3	1.7%
Composition	0	0.0%	1	1.3%	1	0.6%	0	0.0%	1	0.6%
Keybd/Orches	0	0.0%	2	2.7%	2	1.2%	0	0.0%	2	1.2%
Voice	0	0.0%	1	1.3%	1	0.6%	0	0.0%	1	0.6%
	====		====		====		====		====	
TOTALS	97		75		161		11		172	

Source: Registrar's Office
IR/kf
Jun-89

DEGREES CONFERRED BY MAJOR

	1978		1985		1986		1987		1988		1989	
	#	%	#	%	#	%	#	%	#	%	#	%
ASSOCIATE DEGREES												
Associates in Science			1	1.1%	3	3.6%		0.0%	1	1.1%		0.0%
Associates in Arts			6	6.4%	2	2.4%	5	5.7%	2	2.3%	6	6.8%
Subtotal			7	7.4%	5	6.0%	5	5.7%	3	3.4%	6	6.8%
BACHELOR OF SCIENCE												
Christian Ed.	8	8.7%	8	8.5%	1	1.2%	4	4.5%	3	3.4%	3	3.4%
Elementary Ed.	13	14.1%	9	9.6%	18	21.4%	15	17.0%	12	13.6%	13	14.8%
Interdisciplinary		0.0%		0.0%		0.0%		0.0%		0.0%		0.0%
Missiology	15	16.3%	2	2.1%	2	2.4%	5	5.7%	4	4.5%	2	2.3%
Pastoral Ministries	4	4.3%	3	3.2%	2	2.4%	3	3.4%	2	2.3%	2	2.3%
Business Administration		0.0%		0.0%		0.0%		0.0%		0.0%	3	3.4%
Sub-total	40	43.5%	22	23.4%	23	27.4%	27	30.7%	21	23.9%	23	26.1%
BACHELOR OF ARTS												
Bible		0.0%	7	7.4%	4	4.8%	9	10.2%	14	15.9%	13	14.8%
Cross Cultural Studies		0.0%		0.0%		0.0%		0.0%	2	2.3%	2	2.3%
English	5	5.4%	10	10.6%	8	9.5%	8	9.1%	8	9.1%	7	8.0%
History	2	2.2%	3	3.2%	6	7.1%	3	3.4%	1	1.1%	4	4.5%
Interdisciplinary		0.0%		0.0%		0.0%		0.0%		0.0%		0.0%
Philosophy	2	2.2%	1	1.1%		0.0%	2	2.3%	3	3.4%	3	3.4%
Psychology	11	12.0%	24	25.5%	22	26.2%	13	14.8%	15	17.0%	22	25.0%
Religion	5	5.4%	5	5.3%	2	2.4%	5	5.7%	4	4.5%		0.0%
Social Science	8	8.7%	7	7.4%	5	6.0%	9	10.2%	11	12.5%	8	9.1%
Sub-total	33	35.9%	57	60.6%	47	56.0%	49	55.7%	58	65.9%	59	67.0%
BACHELOR OF MUSIC												
Music Ed.	7	7.6%	2	2.1%	3	3.6%	4	4.5%		0.0%	4	4.5%
Keyboard/Instrumental	7	7.6%	4	4.3%	2	2.4%	2	2.3%		0.0%	3	3.4%
Vocal	4	4.3%	1	1.1%	1	1.2%		0.0%	1	1.1%	1	1.1%
Composition	1	1.1%		0.0%		0.0%		0.0%		0.0%	1	1.1%
Sub-total	19	20.7%	7	7.4%	6	7.1%	6	6.8%	1	1.1%	9	10.2%
BACHELOR OF SACRED MUSIC												
Church Music		0.0%	1	1.1%	3	3.6%	1	1.1%		0.0%	2	2.3%
TOTAL	92		94		84		88		83		99	

Source: Registrar's Office
IR/kf
8/89

FACULTY AND STAFF

FACULTY SUMMARY

In the Fall of 1988 there were 49 Full-Time faculty members at Nyack College. There are equal percentages of Professors(18%), and Associate Professors (18%), and fewer Assistant Professors (12%). Of these 49 members, 35% have obtained Doctorates, 55% Masters and 10% Bachelors.

While 22% of the faculty have been employed at Nyack for 15 years or more, 73% have been at Nyack for less than 5 years.

There are also more male faculty members (71%) than female faculty members (29%).

	Full-Time		Part-Time	
	#	%	#	%
Total	49	100%	30	100%
Rank				
Professor	9	18%		
Associate Professor	9	18%		
Assistant Professor	6	12%		
Instructor	11	22%		
Administrative	14	29%		
Degree				
Doctorate	17	35%	4	13%
Masters	27	55%	19	63%
Bachelors	5	10%	5	17%
Years of Service				
15 plus	11	22%		
10 to 14	2	4%		
5 to 9	0	0%		
< 5	36	73%		
Gender				
Male	35	71%		
Female	14	29%		

Source: Academic Office

IR/kf

Aug-89

FACULTY BY RANK, GENDER, STATUS, SERVICE, & RACE

(% = % of Ranked Teaching Faculty)

	79--80		84--85		85--86		86--87		87--88		88--89	
	#	%	#	%	#	%	#	%	#	%	#	%
=====	=====	=====	=====	=====	=====	=====	=====	=====	=====	=====	=====	=====
PROFESSOR TOTALS	11	32.4%	9	29.0%	10	30.3%	9	29.0%	7	21.9%	9	25.7%
Gender: Male	9	26.5%	7	22.6%	8	24.2%	7	22.6%	5	15.6%	6	17.1%
Female	2	5.9%	2	6.5%	2	6.1%	2	6.5%	2	6.3%	3	8.6%
Status: Full	10	29.4%	8	25.8%	8	24.2%	8	25.8%	6	18.8%	8	22.9%
Part	1	2.9%	1	3.2%	2	6.1%	1	3.2%	1	3.1%	1	2.9%
Service: Ave. Years	17.8		19.9		18.9		19.1		20.3		20.3	
Tenured	11	32.4%	8	25.8%	8	24.2%	7	22.6%	7	21.9%	7	20.0%
Race: Black/Non-His		0.0%		0.0%		0.0%		0.0%		0.0%		0.0%
Hispanic		0.0%		0.0%		0.0%		0.0%		0.0%		0.0%
Asian/Amer	1	2.9%		0.0%		0.0%		0.0%		0.0%		0.0%
White/Non-His	10	29.4%	9	29.0%	10	30.3%	9	29.0%	7	21.9%	9	25.7%
Non-res Alien		0.0%		0.0%		0.0%		0.0%		0.0%		0.0%
ASSOCIATE PROF. TOTAL	8	23.5%	7	22.6%	6	18.2%	5	16.1%	5	15.6%	9	25.7%
Gender: Male	6	17.6%	6	19.4%	5	15.2%	4	12.9%	4	12.5%	8	22.9%
Female	2	5.9%	1	3.2%	1	3.0%	1	3.2%	1	3.1%	1	2.9%
Status: Full	7	20.6%	6	19.4%	4	12.1%	4	12.9%	4	12.5%	8	22.9%
Part	1	2.9%	1	3.2%	2	6.1%	1	3.2%	1	3.1%	1	2.9%
Service: Ave. Years	11		9.7		10.5		12.8		13.4		11.4	
Tenured	6	17.6%	3	9.7%	3	9.1%	3	9.7%	3	9.4%	5	14.3%
Race: Black/Non-His		0.0%		0.0%		0.0%		0.0%		0.0%		0.0%
Hispanic	1	2.9%	1	3.2%		0.0%		0.0%		0.0%		0.0%
Asian/Amer		0.0%		0.0%		0.0%		0.0%		0.0%		0.0%
White/Non-His	7	20.6%	6	19.4%	6	18.2%	5	16.1%	5	15.6%	9	25.7%
Non-res Alien		0.0%		0.0%		0.0%		0.0%		0.0%		0.0%
ASSISTANT PROF. TOTAL	6	17.6%	8	25.8%	9	27.3%	9	29.0%	11	34.4%	6	17.1%
Gender: Male	5	14.7%	7	22.6%	7	21.2%	7	22.6%	9	28.1%	5	14.3%
Female	1	2.9%	1	3.2%	2	6.1%	2	6.5%	2	6.3%	1	2.9%
Status: Full	4	11.8%	5	16.1%	7	21.2%	6	19.4%	8	25.0%	3	8.6%
Part	2	5.9%	3	9.7%	2	6.1%	3	9.7%	3	9.4%	3	8.6%
Service: Ave. Years	7.3		7.3		8.3		8		7.4		1.7	
Tenured	1	2.9%	2	6.5%	1	3.0%	3	9.7%	1	3.1%		0.0%
Race: Black/Non-His		0.0%		0.0%		0.0%		0.0%		0.0%		0.0%
Hispanic		0.0%		0.0%		0.0%		0.0%		0.0%		0.0%
Asian/Amer		0.0%		0.0%		0.0%		0.0%		0.0%		0.0%
White/Non-His	6	17.6%	8	25.8%	9	27.3%	9	29.0%	11	34.4%	6	17.1%
Non-res Alien		0.0%		0.0%		0.0%		0.0%		0.0%		0.0%
INSTRUCTORS TOTAL	9	26.5%	7	22.6%	8	24.2%	8	25.8%	9	28.1%	11	31.4%
Gender: Male	6	17.6%	5	16.1%	5	15.2%	6	19.4%	4	12.5%	4	11.4%
Female	3	8.8%	2	6.5%	3	9.1%	2	6.5%	5	15.6%	7	20.0%
Status: Full	1	2.9%	4	12.9%	3	9.1%	1	3.2%	2	6.3%		0.0%
Part	8	23.5%	3	9.7%	5	15.2%	7	22.6%	7	21.9%	11	31.4%
Service: Ave. Years	4.9		5.9		5.4		5.9		2.6		1.4	
Tenured		0.0%		0.0%	0	0.0%		0.0%		0.0%		0.0%
Race: Black/Non-His		0.0%		0.0%		0.0%		0.0%		0.0%	1	2.9%
Hispanic		0.0%		0.0%		0.0%		0.0%		0.0%		0.0%
Asian/Amer		0.0%		0.0%		0.0%		0.0%		0.0%	1	2.9%
White/Non-His	9	26.5%	7	22.6%	8	24.2%	8	25.8%	9	28.1%	5	14.3%
Non-res Alien		0.0%		0.0%		0.0%		0.0%		0.0%		0.0%
TOTAL	34		31		33		31		32		35	

	79--80	84--85	85--86	86--87	87--88	88--89
	#	#	#	#	#	#
=====						
ADJUNCT*						
Gender: Male	15	10	17	14	14	11
Female	7	6	9	7	5	11
Status: Full						
Part	22	16	26	21	19	22
Race: Black/Non-His					1	1
Hispanic	1	1	2	2	1	1
Asian/Amer					1	
White/Non-His	21	15	24	19	16	20
Non-res Alien						
	-----	-----	-----	-----	-----	-----
	22	16	26	21	19	22
NONTEACHING						
Gender: Male	6	9	9	9	8	11
Female	2	3	2	2		3
Status: Full	8	12	11	11	8	14
Part						
Tenured	2	1	1	1		
Service: Ave. Years						3
Race: Black/Non-His		1	1	1	1	1
Hispanic						
Asian/Amer	1	1	1			
White/Non-His	7	10	9	10	7	13
Non-res Alien						
	-----	-----	-----	-----	-----	-----
	8	12	11	11	8	14

*Data does not include Commission Faculty

Source: Academic Office
IR/kf
Aug-89

STAFF BY RANK, GENDER, RACE, SERVICE AND DEGREE

The staff at Nyack College have been categorized into five groups: Service/Maintenance, Management/Confidential, Executive Secretary, Secretary, and Clerical. Employees of Pioneer Food Service, Service Master, and Dagley are not included.

There are a total of 40 staff members employed at the College. Of these 40, 30% are males and 70% are females. Nyack's employees are composed of 95% white staff and 5% minorities. 63% of the staff members hold some form of a degree (Doctorate 3%, Masters 10%, Bachelors 45%, and Associates 5%).

Among the 40 staff members 70% have been employed at Nyack for less than 5 years.

(Data based on a study conducted 3/89)

STAFF CHARACTERISTICS

STAFF CLASSIFICATIONS		#	%
Staff Summary	Total	40	100%
	Sex		
	Male	12	30%
	Female	28	70%
	Race		
	White	38	95%
	Asian	2	5%
	Yrs of Service		
	15 plus	6	15%
	10 to 14	2	5%
	5 to 9	4	10%
	Less than 5	28	70%
	Degree		
	Associate	2	5%
	Bachelors	18	45%
	Masters	4	10%
	Doctorate	1	3%

STAFF CLASSIFICATION		#	%
Service Maintenance	Total	6	100%
	Sex		
	Male	6	100%
	Female	0	0%
	Race		
	White	4	67%
	Asian	2	33%
	Yrs of Service		
	15 plus	2	33%
	10 to 14	0	0%
	5 to 9	0	0%
	Less than 5	4	67%
	Degree		
	Associate	1	17%
	Bachelors	3	50%
	Masters	0	0%
	Doctorate	1	17%

STAFF CHARACTERISTICS

STAFF CLASSIFICATION		#	%
Management / Confidential Staff	Total	8	100%
	Sex		
	Male	4	50%
	Female	4	50%
	Race		
	White	8	100%
	Yrs of Service		
	15 plus	2	25%
	10 to 14	1	13%
	5 to 9	1	13%
	Less than 5	4	50%
	Degree		
	Associate	0	0%
	Bachelors	1	13%
	Masters	2	25%
	Doctorate	0	0%

STAFF CLASSIFICATION		#	%
Secretary	Total	8	100%
	Sex		
	Male	0	0%
	Female	8	100%
	Race		
	White	8	100%
	Yrs of Service		
	15 plus	0	0%
	10 to 14	1	13%
	5 to 9	1	13%
	Less than 5	6	75%
	Degree		
	Associate	0	0%
	Bachelors	6	75%
	Masters	0	0%
	Doctorate	0	0%

STAFF CLASSIFICATION		#	%
Executive Secretary	Total	10	100%
	Sex		
	Male	1	10%
	Female	9	90%
	Race		
	White	10	100%
	Yrs of Service		
	15 plus	0	0%
	10 to 14	0	0%
	5 to 9	1	10%
	Less than 5	9	90%
	Degree		
	Associate	1	10%
	Bachelors	7	70%
	Masters	2	20%
	Doctorate	0	0%

STAFF CLASSIFICATION		#	%
Clerical	Total	8	100%
	Sex		
	Male	1	13%
	Female	7	88%
	Race		
	White	8	100%
	Yrs of Service		
	15 plus	2	25%
	10 to 14	0	0%
	5 to 9	1	13%
	Less than 5	5	63%
	Degree		
	Associate	0	0%
	Bachelors	1	13%
	Masters	0	0%
	Doctorate	0	0%

Source: Assistant Treasurer's Office
 IR/kf
 Aug-89

ALUMNI

ALUMNI SUPPORT

1976 TO 1989

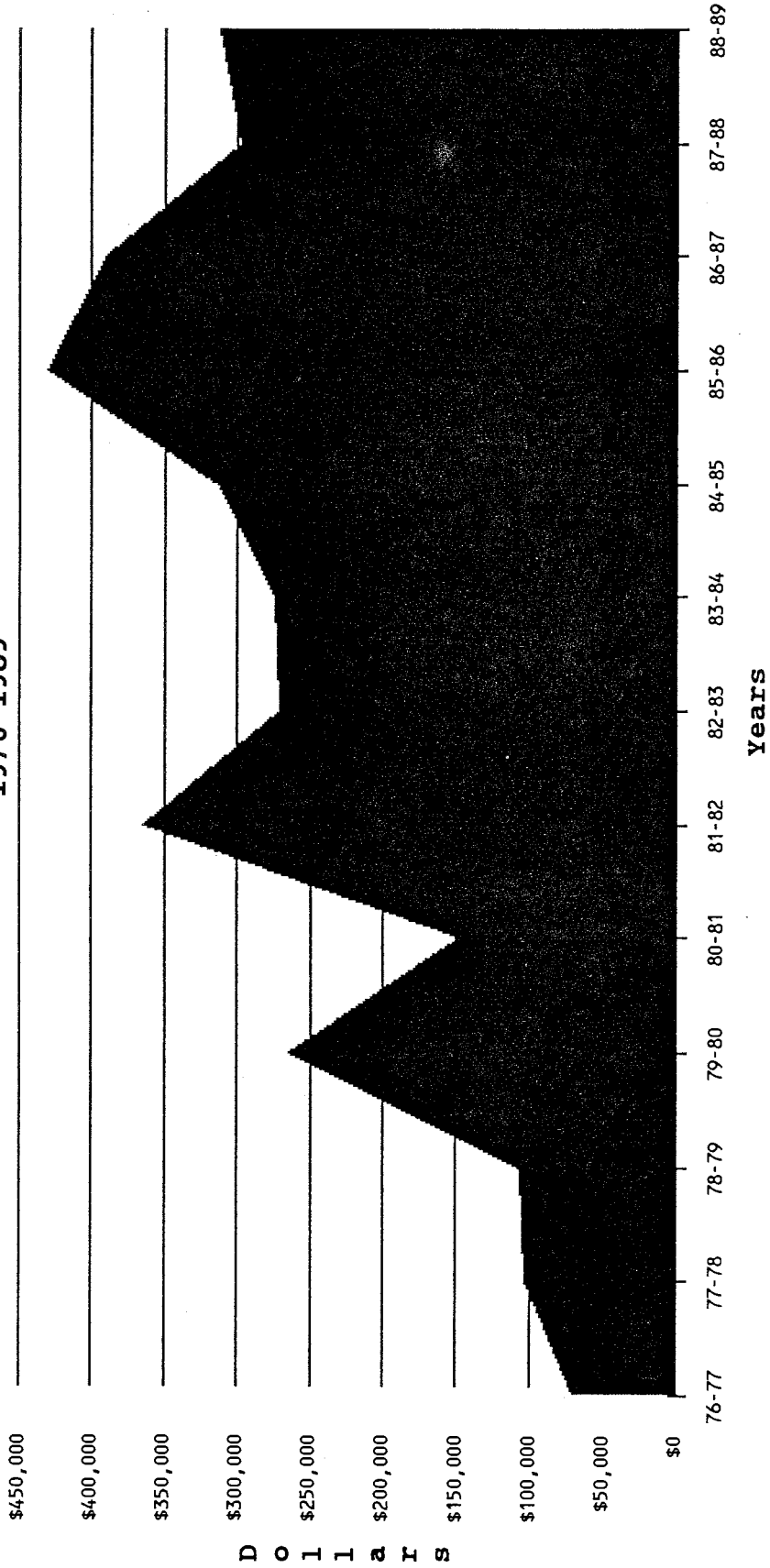
Fiscal Year	Active Mailing List	# of Donors	Average Gift	Total Support	% Change From Last Year
=====	=====	=====	=====	=====	=====
1976-77	*	766	\$93	\$70,974	
1977-78	*	945	\$109	\$102,968	31.1%
1978-79	*	1083	\$99	\$106,739	3.5%
1979-80	*	915	\$289	\$264,091	59.6%
1980-81	*	936	\$158	\$147,502	-79.0%
1981-82	*	1158	\$314	\$363,644	59.4%
1982-83	*	972	\$278	\$270,003	-34.7%
1983-84	*	1356	\$202	\$274,538	1.7%
1984-85	*	1221	\$257	\$313,428	12.4%
1985-86	*	925	\$464	\$429,216	27.0%
1986-87	*	1201	\$323	\$388,312	-10.5%
1987-88	6653	749	\$397	\$297,104	-30.7%
1988-89	6600	744	\$418	\$311,050	4.5%

* Data not available

Source: Advancement Office
IR/kf
Aug-89

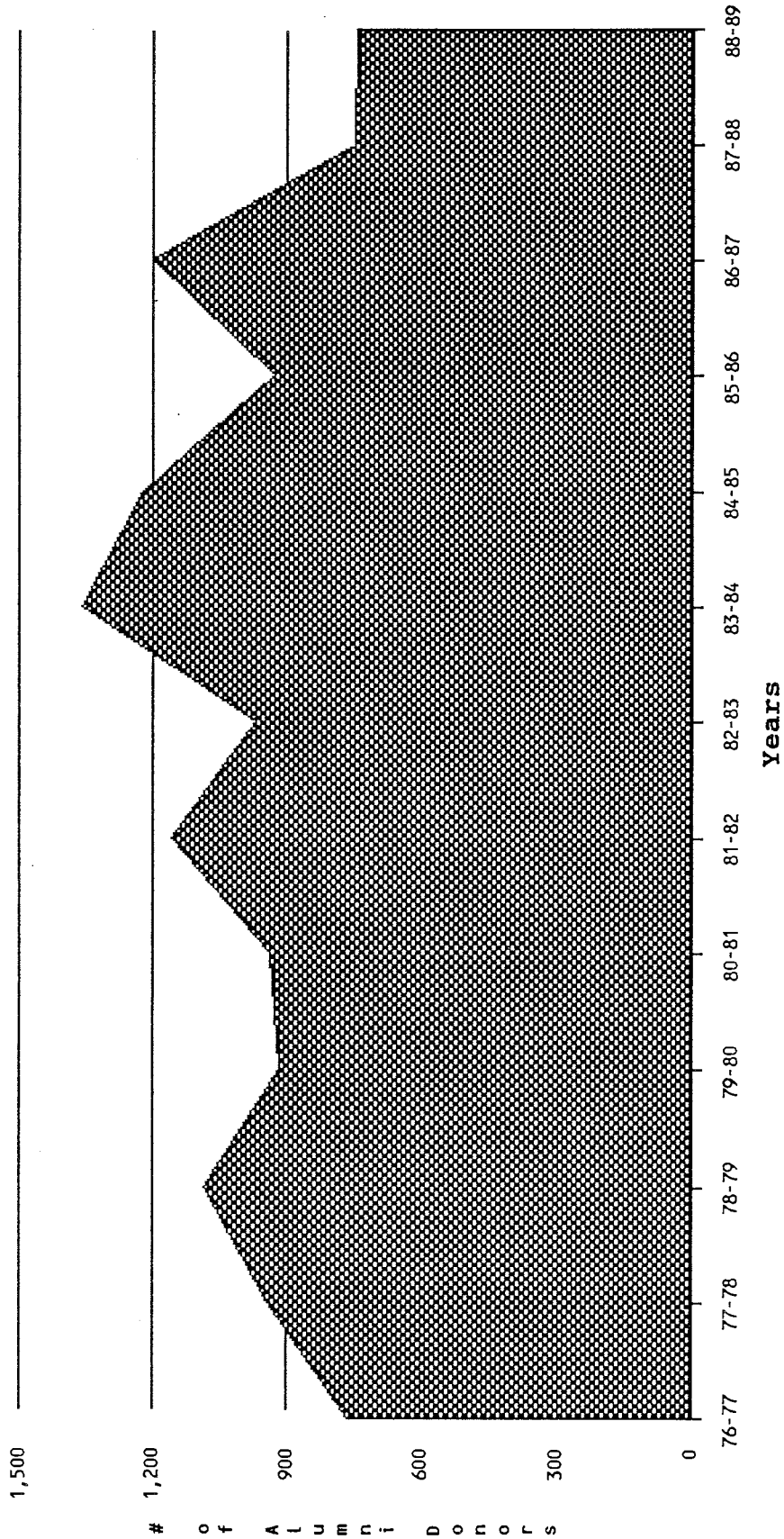
ALUMNI SUPPORT

1976-1989



NUMBER OF ALUMNI DONORS

1976-1989



GEOGRAPHIC DISTRIBUTION OF ALUMNI BY SELECTED YEARS OF GRADUATION

	78	%	85	%	86	%	87	%	88	%	89	%
New York	39	24%	74	35%	75	37%	110	42%	109	50%	98	46%
OTHER MID-ATLANTIC												
New Jersey	19	12%	17	8%	19	9%	22	8%	28	13%	27	13%
Pennsylvania	20	12%	22	10%	29	14%	30	12%	14	6%	20	9%
Delaware	1	1%	0	0%	0	0%	1	0%	2	1%	0	0%
Maryland	2	1%	5	2%	6	3%	4	2%	7	3%	0	0%
NEW ENGLAND												
Maine	1	1%	3	1%	0	0%	4	2%	1	0%	1	0%
Vermont	3	2%	1	0%	2	1%	4	2%	1	0%	4	2%
New Hampshire	3	2%	0	0%	0	0%	0	0%	2	1%	1	0%
Massachusetts	6	4%	4	2%	11	5%	7	3%	2	1%	4	2%
Rhode Island	0	0%	0	0%	0	0%	0	0%	1	0%	2	1%
Connecticut	5	3%	10	5%	4	2%	6	2%	7	3%	6	3%
MID-WEST												
Ohio	5	3%	7	3%	9	4%	11	4%	10	5%	15	7%
Illinois	4	2%	5	2%	5	2%	4	2%	2	1%	1	0%
Indiana	2	1%	1	0%	4	2%	4	2%	2	1%	2	1%
Michigan	2	1%	4	2%	0	0%	1	0%	1	0%	2	1%
Minnesota	2	1%	2	1%	0	0%	1	0%	1	0%	2	1%
West Virginia	0	0%	1	0%	0	0%	1	0%	2	1%	0	0%
SOUTH												
Alabama	0	0%	0	0%	1	0%	1	0%	0	0%	0	0%
Florida	5	3%	5	2%	4	2%	10	4%	3	1%	9	4%
Georgia	0	0%	3	1%	3	1%	3	1%	4	2%	3	1%
Kentucky	2	1%	2	1%	1	0%	0	0%	1	0%	1	0%
North Carolina	2	1%	4	2%	1	0%	5	2%	2	1%	3	1%
South Carolina	0	0%	1	0%	1	0%	0	0%	0	0%	0	0%
Tennessee	1	1%	2	1%	0	0%	0	0%	1	0%	0	0%
Virginia	1	1%	3	1%	2	1%	4	2%	4	2%	6	3%
WEST												
California	5	3%	5	2%	1	0%	6	2%	3	1%	2	1%
Washington	2	1%	4	2%	6	3%	2	1%	2	1%	1	0%
Other	17	10%	10	5%	12	6%	10	4%	5	2%	2	1%
INTERNATIONAL	14	9%	19	9%	9	4%	9	3%	2	1%	1	0%
Totals	163		214		205		260		219		213	

Source: Advancement Office
IR/kf
Aug-89

FACILITIES

FACILITIES

1. BASIC STRUCTURES	SQ. FT	FLOORS	FUNCTIONS
Campus Center	55,380	5	Classrms, Stu. Serv. & Offices
Christie Hall	37,693	B-4	Dormitory
Ed. Building	1,801	2	Classrooms & Offices
Faculty Offices	2,198	2	Offices
Moseley Hall	6,256	2	Dormitory
Pardington Hall	22,740	B-4	Classrooms. Offices, Chapel
Shuman Hall	23,194	B-2	Library & Offices
Simpson Hall	53,040	B-4	Dormitory & Classrooms
Bowman Gym			

2. ROOM USE CATEGORIES	SQ.FT.
Classrooms	9,663
Laboratories	5,729
Offices - Faculty	2,198
Offices - Adminstration	9,259
Assembly Facilities	2,840
Food Service	6,772
Lounges	9,522
Merchandising Facilities	1,332
Storage	10,904
Health Care Facilities	253
Athletic Facilities	16,014
Library	7,903
Dorm Rooms	43,296

3. TOTAL ACREAGE	65
------------------	----

NOTES:

Sections 1 & 2 are undergraduate totals.

The total acreage was estimated by the Treasurer's Office and includes both Nyack & ATS.

Source: Committee Reports of
Long Range Planning Committee
and B & G

IR/ah
8/88

FINANCES

This information not yet available,
it will be provided for you at a later date.