

FACT BOOK
Nyack College
1987-88

FOREWORD

The purpose of this Fact Book is to centralize and standardize data about Nyack College which will be useful for planning, public relations, Middle States reviews, etc.

Since this is the first edition of the Fact Book, a great deal of planning went into its development. The impetus for the Fact Book came from the Strategic Planning Committee which realized that it was impossible to plan without an accurate portrait of the internal environment in which the college operates. A working group consisting of Bob Brewer, John Hendrickson, Carolyn Jarmon, and Ron Ruegsegger was appointed to plan the Fact Book.

The committee's first step was to conduct an institutional audit to determine what data the college already collects about itself. Part VIII of the Fact Book contains a list of the items discovered through the audit. This list is included to enable you to know where to look for information which is not included in this volume.

The committee's second step was to determine which data should be included in the Fact Book and the format in which it should be displayed. After reviewing fact books from other institutions and the list of the data the institution presently collects about itself, the committee settled on the data and format which follows.

Given that this is the first edition of the Nyack College Fact Book, there are doubtless respects in which it can be improved. For one thing, some of the data we would like to have included is simply not being kept by the college. In other cases the data is being kept but it is very difficult to access. Hopefully, one valuable by-product of this project will be a improvement in the way we collect information about ourselves. If other respects in which this fact book could be improved come to mind as you look through this volume, please let me know.

The task of collecting and entering the data on the computer turned out to be a very substantial project. Fortunately, Anita Hamilton had a few months of free time before she assumed her duties as Faculty Assistant and many of these tedious tasks fell to her. She did a very good job. I would also like to thank Todd Beaver for developing the financial spread sheets and introducing me to Lotus 1-2-3.

Ronald W. Ruegsegger, Ph.D
Strategic Planning Coordinator

TABLE OF CONTENTS

I.	<u>Institutional Profile</u>	p. 1
	A. Nyack College	p. 2
	B. Fingertip Facts	p. 3
	C. Board of Trustees: Members	p. 4
	D. Board of Trustees: Committees	p. 5
	E. Nyack College Organizational Charts	
	1. Central Administration	p. 6
	2. Academic Affairs	p. 7
	3. Finance	p. 8
	4. Student Development	p. 9
	5. Advancement	p. 10
II.	<u>Students</u>	p. 11
	A. FTE Enrollment	p. 12
	B. Head Count Enrollment	p. 13
	C. Enrollment: By State of Origin (Table)	p. 14
	D. Enrollment: By State of Origin (Charts)	
	1. Mid-Atlantic	p. 15
	2. New England	p. 16
	3. South	p. 17
	4. Mid-West	p. 18
	E. Enrollment: By New York County	p. 19
	F. Enrollment: By Denominational Affiliation	p. 21
	G. Enrollment: By Race, Gender, Age, Marital Status	p. 22
	H. Freshman Profile By Average SAT	p. 23
	I. Transfer Profile By Intended Major	p. 23
	J. Retention Rates	
	1. Fall Enrollment of Freshmen and Transfers	p. 24
	2. Fall Enrollment of Freshmen	p. 25
	3. Fall Enrollment of Transfers	p. 26
	K. National Teacher Examination	p. 27
	L. Undergraduate Assessment Program	p. 27
III.	<u>Curriculum</u>	p. 28
	A. Enrollment by Class, Major, Full-time, Part-time	p. 29
	B. Degrees Conferred By Major	p. 30
	C. Departmental Productivity (Table)	p. 31

D.	Departmental Productivity (Charts)	
1.	Departmental Productivity: 1986-1987	p. 32
2.	Deviation From Average Net/Loss Cr/Hr 86-87	p. 33
3.	Deviation From Average ... By Rank Order	p. 34
4.	Departmental Productivity: 1987-1988	p. 35
5.	Deviation From Average Net/Loss Cr/Hr 87-88	p. 36
6.	Deviation From Average ... By Rank Order	p. 37
IV.	<u>Faculty</u>	p. 38
A.	Rank, Gender, Status, Service, Race	p. 39
B.	Student/Faculty Ratios	p. 41
V.	<u>Alumni</u>	p. 42
A.	Alumni Support (Table)	p. 43
B.	Alumni Support (Chart)	p. 44
C.	Number of Alumni Donors	p. 45
D.	Geographic Distribution of Alumni	p. 46
VI.	<u>Facilities</u>	p. 47
VII.	<u>Finances</u>	p. 49
A.	Financial Patterns (Table)	p. 50
B.	Financial Patterns (Charts)	
1.	Total Current Fund Revenue 1985-85	p. 52
2.	Total Current Fund Revenue 1986-87	p. 53
3.	Other Sources of Income 1985-1986	p. 54
4.	Other Sources of Income 1986-1987	p. 55
5.	Total Expenses and Transfers 1985-1986	p. 56
6.	Total Expenses and Transfers 1986-1987	p. 57
7.	Educational and General Expense 1985-1986	p. 58
8.	Educational and General Expense 1986-1987	p. 59
C.	Student Aid	p. 60
VIII.	<u>List of Additional Data</u>	p. 61

INSTITUTIONAL PROFILE



GENERAL

Independent, coeducational, liberal arts college sponsored by The Christian and Missionary Alliance. Founded in 1882 by A.B Simpson.

Chartered by the Board of Regents of the University of the State of New York. Curricula registered by the State Education Department and approved by the Department for the training of veterans under Public Laws 550 and 894. Listed by the United States Department of Justice for the training of foreign students.

Accredited by the Middle State Association of Colleges and Secondary Schools, and by the National Association of Schools of Music. Candidate member of the Association of Theological Schools.

Located on a 63-acre campus overlooking the Hudson River, in the suburban center of Nyack, approximately 25 miles from New York City.

ADMISSIONS REQUIREMENTS

Items required to complete the application process:

- Completed application for admission;
- Application fee;
- Official high school transcript;
- SAT or ACT scores (for recent high school graduates);
- Personal recommendations from a pastor and two other persons;
- Agreement with the institutional standards of conduct and a personal faith in Jesus Christ.

Transfers:

In addition to the above requirements, all academic transcripts from each institution attended previously.

Admission on a rolling basis.

College credit may be granted for the Proficiency Examination Program offered through the New York State Education Department, the College Level Examination Program and Advanced Placement examinations.

TUITION AND FEES

Annual charges for 1987-88:

Tuition: \$5530; room and board: \$2832; student fees: \$261; books: approximately \$350.

About 78% of the student body receiving aid in some form: grants, scholarships, loans and work/study.

Scholarships and financial aid awarded on the basis of academic achievement, leadership skills, outstanding abilities and need.

All federal Title IV funds — e.g. PELL, SEOG, NDSL, GSL, College Work Study — available to eligible students by application with the Financial Aid Form (FAF) and the Nyack College Financial Aid Application form. New York residents should apply for the New York State Tuition Assistance Program (TAP).

For information and appropriate forms, contact the Financial Aid Office.

ACADEMIC PROGRAMS

Of the 60 full-time faculty, 42% with earned doctoral degrees.

Student/faculty ratio: 15 to 1.

Semester system with two-week Winterim.

In nearby New York City, opportunity for cultural, economic and inter-ethnic experience and resources for Christian ministry.

Programs of study:

- Associate Degree**
- A.A.: general education; pre-nursing
- A.S.: Christian work

Professional Majors

B.S.: business administration, Christian education, missiology, pastoral ministry, elementary education
Mus. B.: music education

Liberal Arts Majors

B.A.: Bible, English, history, philosophy, psychology, religion, social science

Music Majors

S.M.B.: Church music
Mus.B.: composition, keyboard, orchestral instruments, voice

Graduate Degrees

M.P.S.: master of professional studies
M.Div.: master of divinity

Special programs:

Higher Education Opportunity Program for disadvantaged students (HEOP).

Learning Contracts for independent study.

Internship possibilities for career-related experience in all majors.

Overseas and off-campus study in London, Europe, Africa, Ecuador, Williamsburg, Florida, et al.

EXTRACURRICULAR ACTIVITIES

Athletics

National Association of Intercollegiate Athletics, National Christian College Athletic Association, Central Atlantic College Conference, Hudson Valley Women's Athletic Conference.

Intercollegiate and intramural sports: men's soccer, men's and women's volleyball, cross country, men's and women's basketball, cheerleading, baseball, softball, tennis.

College recreational facilities: playing field, gymnasium, tennis courts, sauna, jacuzzi.

Local recreational opportunities: hiking, skiing, skating, cycling, racket ball, swimming, golfing, bowling, health spas, YMCA.

Club and organizations

Afro-American Cultural Exchange Club, Gospel teams, Campus Church Committee, Chorale, Food Service Review Committee, International Students Fellowship, Ladies Glee Club, Married Students Association, Missionary Society, Music Educators National Conference (MENC), Dramatic Ensemble, Student Government Association.

Honor societies: Epsilon Delta Chapter of Lambda Iota Tau; New York Pi Chapter of Alpha Chi; Nyack Honor Society.

Activities

Student publication, *Forum*; literary journal, *Unicorn*; yearbook, *Missionarian*; radio station, WNYK; concerts, socials, recitals.

For more information write to:
Director of Admissions
Nyack College
Nyack, NY 10960
 or phone (914) 358-1710 ext. 200

FINGERTIP FACTS

	83-84	84-85	85-86	86-87	87-88
ENROLLMENT					
Full-Time	516	510	465	463	466
Part-Time FTE	24.2	32.25	24.5	30.6	22.8
Total Headcount	572	569	477	490	511
ENROLLMENT BY PROGRAM (Juniors and Seniors)					
Associate	2	10	2	1	
Professional	71	63	68	77	59
Liberal Arts	114	106	93	109	119
Music	11	12	11	7	4
DEGREES AWARDED					
Associate	7	6	7	5	5
Professional	29	35	22	23	27
Liberal Arts	69	56	57	47	49
Music	10	5	8	10	7
FACULTY					
FT Teaching Faculty	23	23	23	24	20
PT Teaching Faculty	22	29	39	34	31
Admin/Non Teaching Facu	7	12	12	11	8
FACILITIES (Square Feet)					
Library					7,903
Classroom					9,663
Offices					11,457
Residence Halls					43,296
Total Acreage					65
FINANCES					
Revenue			4,875,356	4,801,780	**
Expenditures			4,831,733	4,796,767	**
Student Aid			*816,276	*943,451	2,019,809

NOTES: *GSL, PLUS, Time Card, and Tuition Remission figures not available
 **Data not available

Source: Fact Book
 IR/ah
 8/88

BOARD OF TRUSTEES: MEMBERS

Term Expires September 1988

Rev. Dwight G. Anderson
New England District
Superintendent, The C&MA

Dr. Richard L. Brown
Chiropracter

*Rev. James A. Davey
President, Nyack Alumni
Assoc., VP General
Services, The C&MA

*Mr. Merlin Feather
VP for Finance/Treasurer
The C&MA

Mr. Robert E. Nanfelt
President (retired),
U. S. Quartz

Mr. Eugene Petterson
VP (retired), A. C.
Nielsen Co.

Rev. Dahl B. Seckinger
Great Lake District
Superintendent, The C&MA

Term Expires September 1989

Rev. Richard W. Bailey
VP for Church Ministries
The C&MA

Mr. Joseph E. Bersche
President, Controlled
Development, Inc.

Rev. Rockwell L. Dillaman
Pastor, Allegheny Center
C&MA Church

Dr. Walter J. Helsing
Orthopaedic Surgeon
(retired)

Rev. Charles R. Holmes
Central District
Superintendent, The C&MA

Rev. David K. Muir
Western Penna. District
Superintendent, The C&MA

Mrs. Barbara J. Shinn
Director Creative Food
Center, Campbell Soup Co.

Term Expires September 1990

Mr. Ronald Eastman
VP Real Estate
Development, Marriott
Corp.

Mr. Paul D. Glenn
Attn. Federal Home Loan
Bank Board

*Dr. David L. Rambo
President, The C&MA

Dr. Donald V. Seibert,
Chairman of the Board
CEO (retired) J. C.
Penney Co., Inc.

Mr. Alan J. Carter
Owner Blue Ridge
Broadcasting, Inc. &
Johnson Electric Copr.,
Director, Horizon Assoc.,
Director, New Life
Ministries, Founder of
Voice Enterprises

Mr. Robert Sanford
President (retired),
Int'l Division Nabisco
Copr.

Rev. Paul Hazlett
Metropolitan District
Superintendent, The C&MA

Trustees are elected by the
Board of Trustees.

*ex officio member

BOARD OF TRUSTEES: COMMITTEES

EXECUTIVE COMMITTEE

(by election)

Donald V. Seibert, Chairman
 Robert E. Nanfelt, Vice-Chm
 Richard W. Bailey
 Merlin C. Feather
 Eugene Petterson
 David L. Rambo

LAND USE COMMITTEE

Joseph E. Bersche, Chairman
 Ronald E. Eastman
 Merlin C. Feather
 Dahl B. Seckinger
 Harold P. Shelly
 (Appt. by President)

COMMITTEE ON ACADEMIC
AFFAIRS, Nyack College

Walter J. Helsing, Chairman
 Paul D. Glenn
 Charles R. Holmes

COMMITTEE ON SPIRITUAL &
STUDENT LIFE

Dahl B. Seckinger, Chairman
 James A. Davey
 David K. Muir

COMMITTEE ON ACADEMIC
AFFAIRS, ATS

David L. Rambo, Chairman
 Richard W. Bailey
 Rockwell L. Dillaman

SATELLITE CAMPUSES

Harold P. Shelly, Chairman
 G. Linwood Barney
 Andrew Jesson
 Terry H. Wardle

COMMITTEE ON BUDGET/FINANCE

Ronald E. Eastman, Chairman
 Merlin C. Feather
 Robert E. Nanfelt

AD HOC COMMITTEE-ADVISOR TO
ATS EXECUTIVE DIRECTOR

Donald V. Seibert, Chairman
 Robert E. Nanfelt
 James A. Davey
 Richard W. Bailey
 Dahl B. Seckinger

COMMITTEE ON B&G

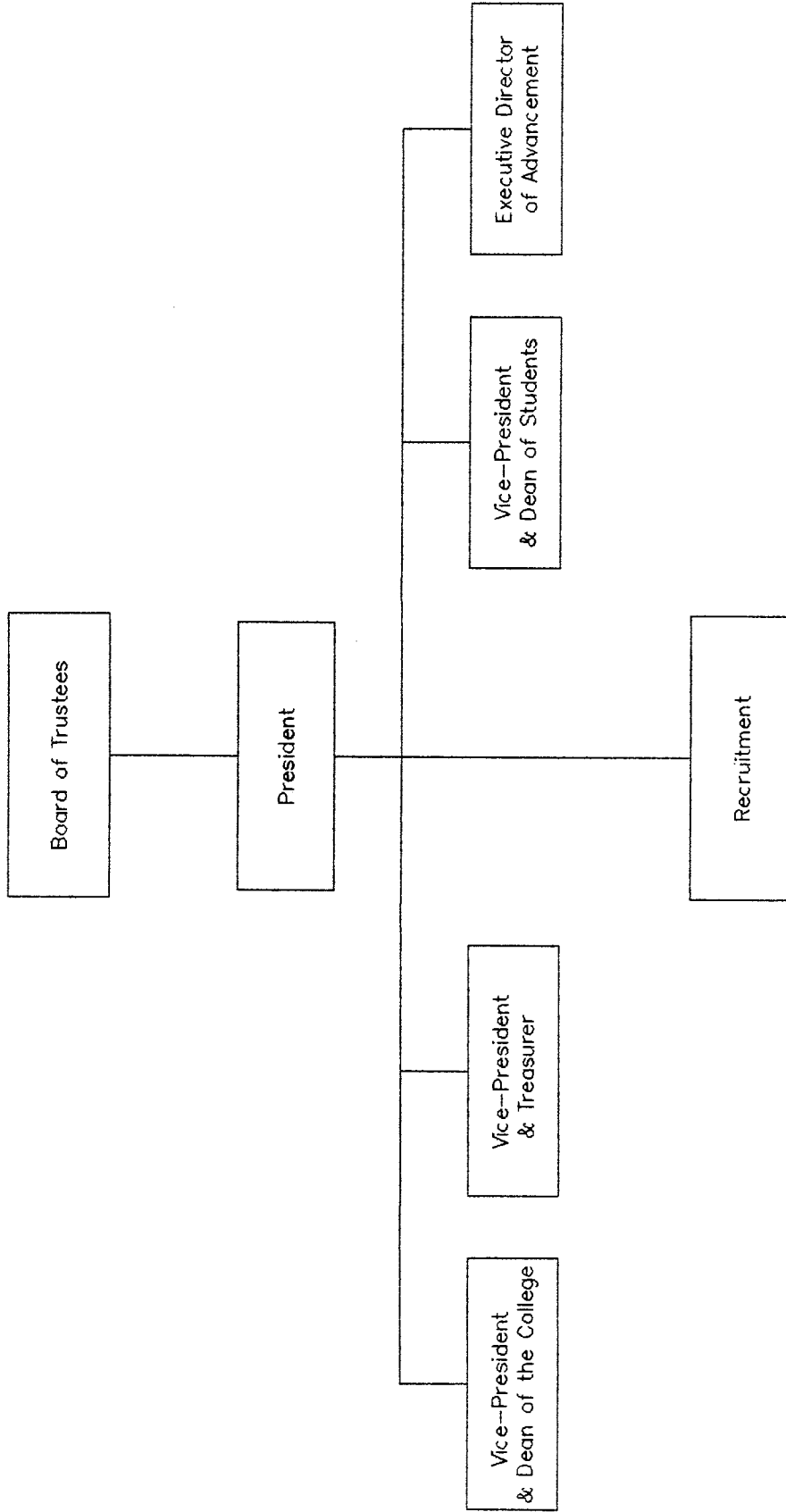
Joseph E. Bersche, Chairman
 Dwight G. Anderson
 Richard L. Brown

COMMITTEE ON PROMOTION &
DEVELOPMENT

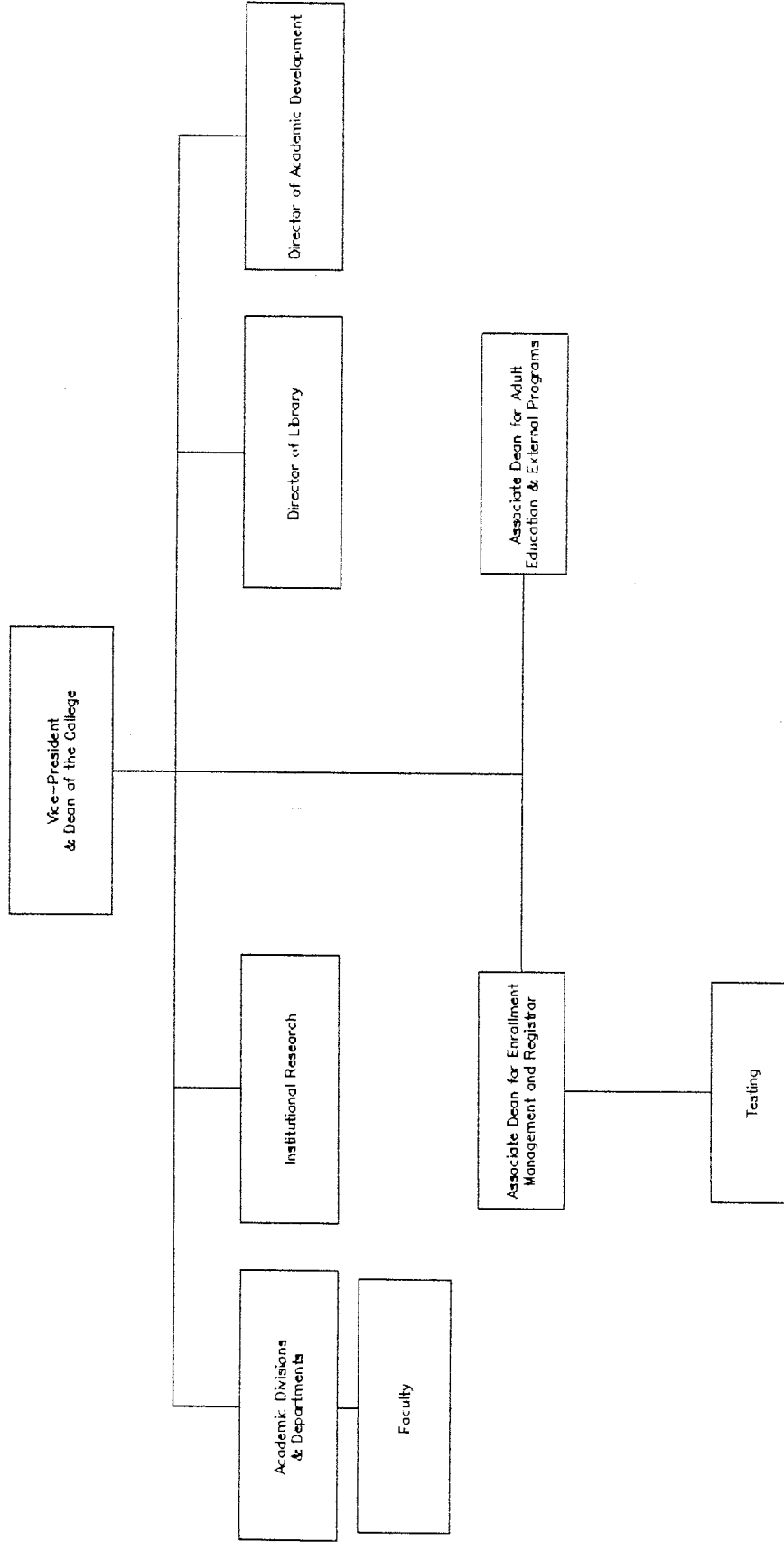
Donald V. Seibert, Chairman
 Eugene Pettersen
 Barbara J. Shinn

Source: President's Office
 IR/ah
 7/88

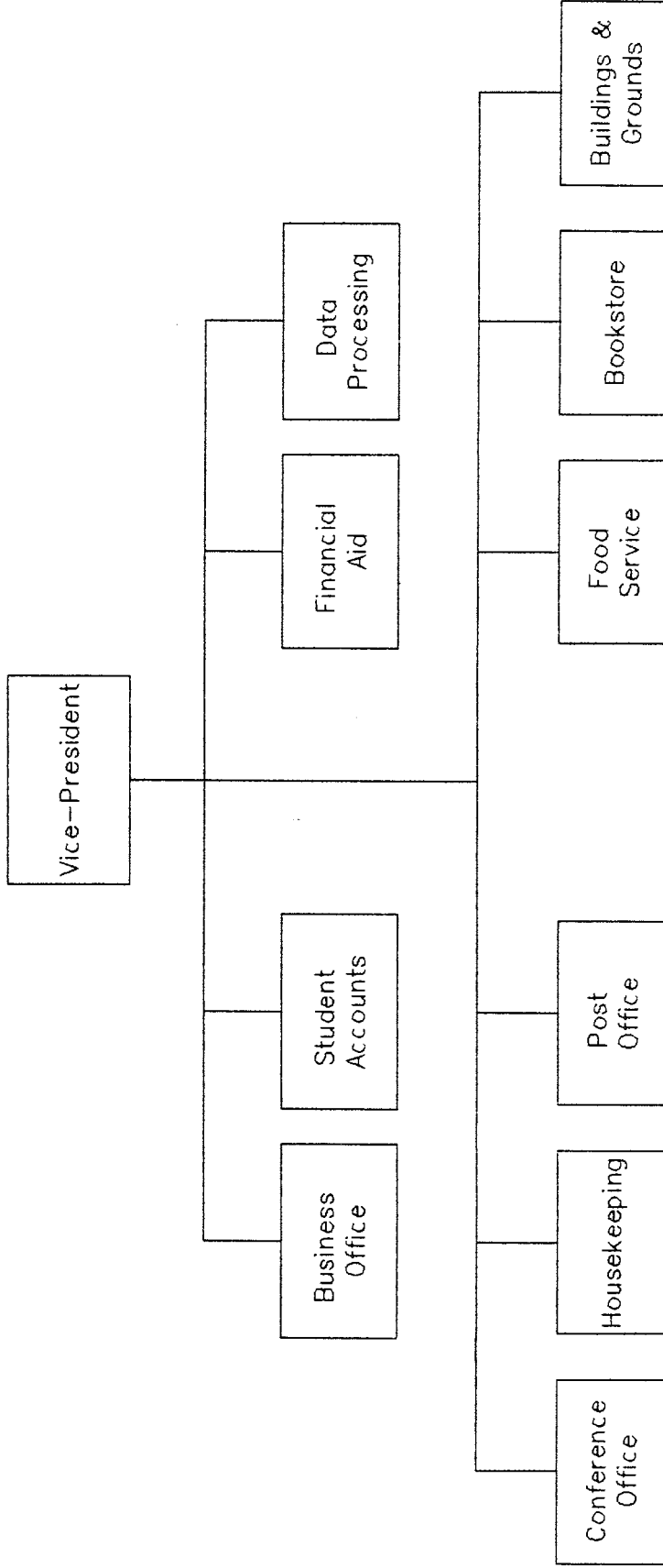
NYACK COLLEGE CENTRAL ADMINISTRATION



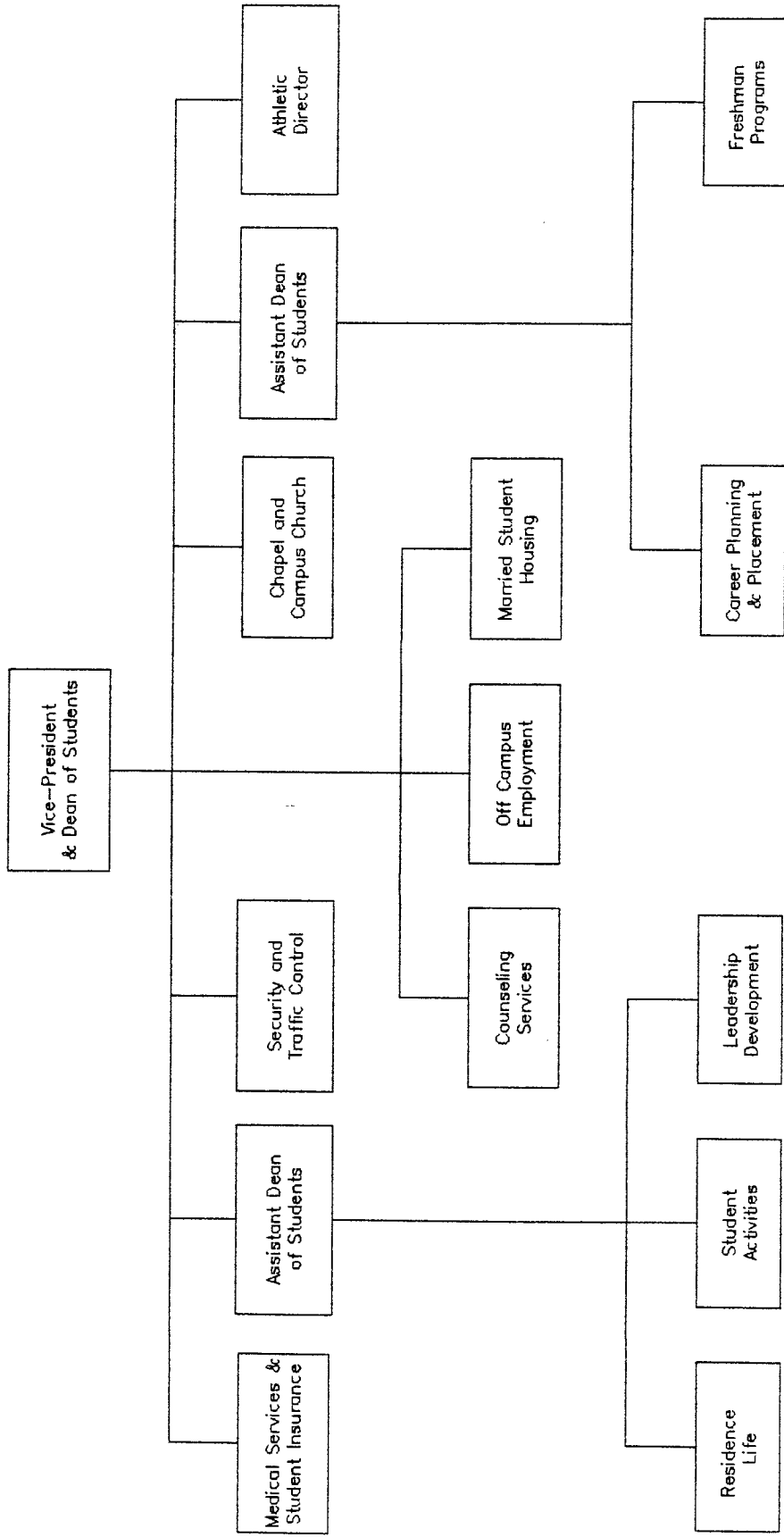
NYACK COLLEGE ACADEMIC AFFAIRS



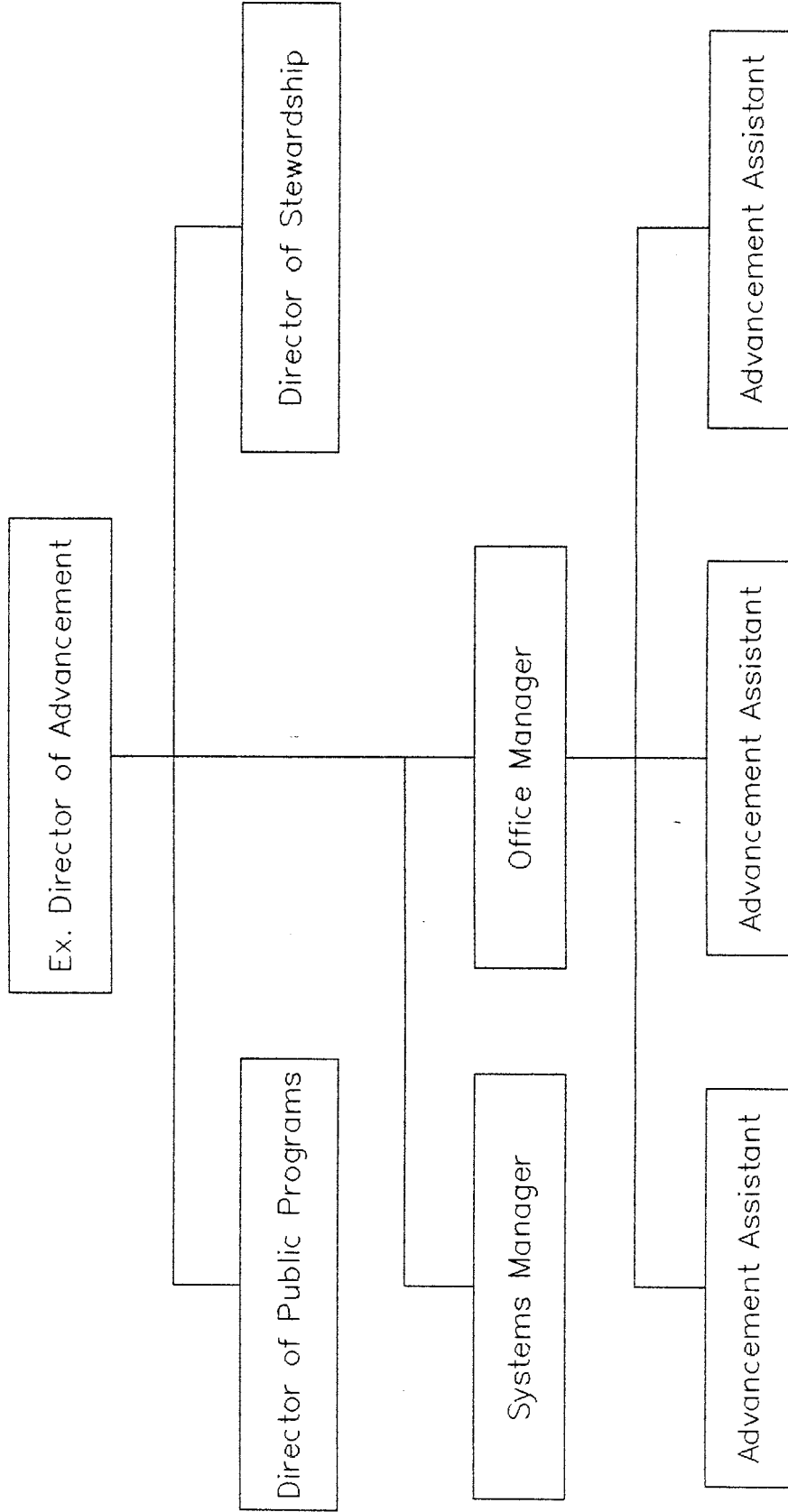
NYACK COLLEGE FINANCE



NYACK COLLEGE STUDENT DEVELOPMENT



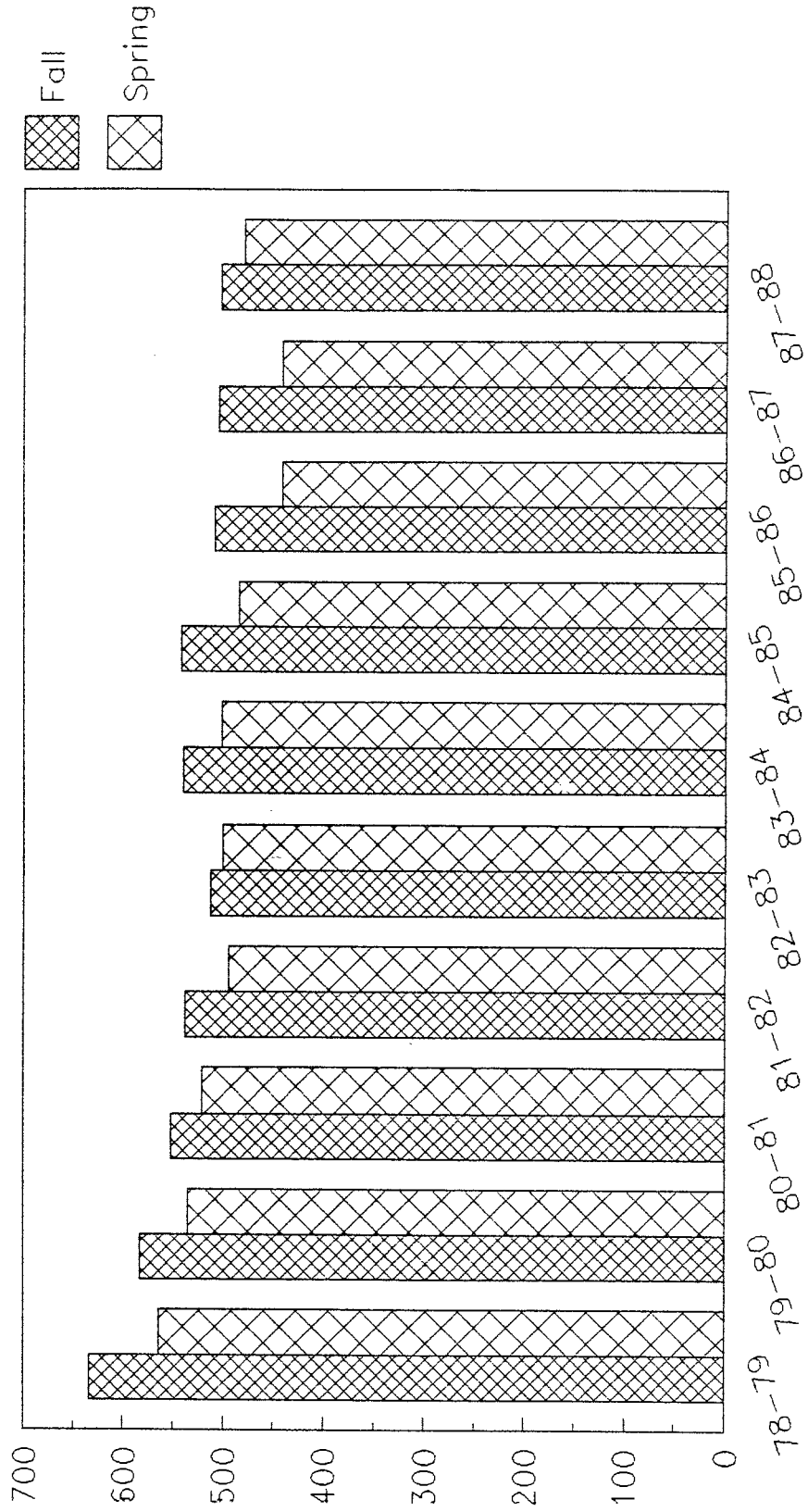
NYACK COLLEGE ADVANCEMENT



STUDENTS

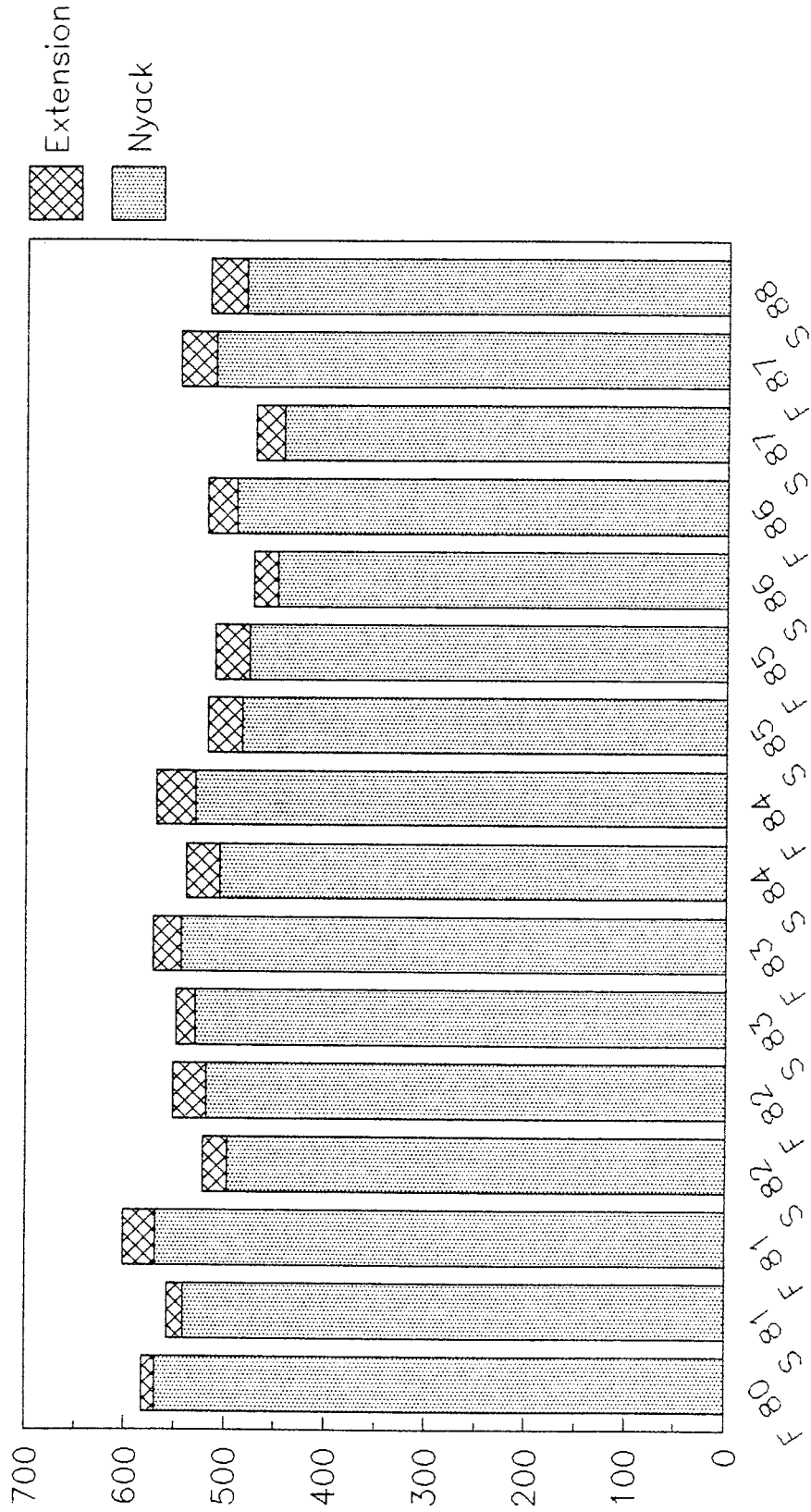
FTE ENROLLMENT

1978-79 TO 1987-88



HEAD COUNT ENROLLMENT

1980-81 TO 1987-88



ENROLLMENT
BY STATE OF ORIGIN

	77-78		83-84		84-85		85-86		86-87		87-88	
	#	%	#	%	#	%	#	%	#	%	#	%
NEW YORK	287	48.5%	249	43.5%	279	49.3%	253	50.0%	258	50.0%	267	52.3%
OTHER MID-ATLANTIC												
New Jersey	58	9.8%	64	11.2%	54	9.5%	58	11.5%	57	11.0%	59	11.5%
Pennsylvania	77	13.0%	91	15.9%	79	14.0%	68	13.4%	58	11.2%	49	9.6%
Delaware	3	0.5%	1	0.2%	2	0.4%	2	0.4%	2	0.4%	4	0.8%
Maryland	3	0.5%	9	1.6%	14	2.5%	10	2.0%	11	2.1%	6	1.2%
NEW ENGLAND												
Maine	14	2.4%	11	1.9%	6	1.1%	8	1.6%	6	1.2%	5	1.0%
Vermont	5	0.8%	13	2.3%	10	1.8%	9	1.8%	8	1.6%	12	2.3%
New Hampshire	4	0.7%	1	0.2%	3	0.5%	2	0.4%	7	1.4%	12	2.3%
Massachusetts	25	4.2%	20	3.5%	16	2.8%	12	2.4%	12	2.3%	8	1.6%
Rhode Island	1	0.2%	1	0.2%		0.0%		0.0%	3	0.6%	3	0.6%
Connecticut	18	3.0%	14	2.4%	15	2.7%	10	2.0%	10	1.9%	10	2.0%
MID-WEST												
Ohio	39	6.6%	46	8.0%	34	6.0%	25	4.9%	25	4.8%	28	5.5%
Illinois	5	0.8%	4	0.7%	4	0.7%	2	0.4%	1	0.2%	1	0.2%
Indiana	3	0.5%	3	0.5%	1	0.2%	1	0.2%	2	0.4%	1	0.2%
Michigan	2	0.3%	5	0.9%	5	0.9%	8	1.6%	4	0.8%	3	0.6%
Minnesota		0.0%		0.0%		0.0%		0.0%		0.0%	2	0.4%
West Virginia	3	0.5%	3	0.5%	4	0.7%	4	0.8%	4	0.8%	2	0.4%
SOUTH												
Alabama	1	0.2%		0.0%		0.0%		0.0%	1	0.2%	1	0.2%
Florida	14	2.4%	11	1.9%	14	2.5%	9	1.8%	10	1.9%	8	1.6%
Georgia		0.0%	3	0.5%		0.0%	2	0.4%	1	0.2%	1	0.2%
Kentucky	1	0.2%		0.0%		0.0%	1	0.2%	1	0.2%	1	0.2%
North Carolina	8	1.4%	3	0.5%	4	0.7%	4	0.8%	4	0.8%	5	1.0%
South Carolina		0.0%	1	0.2%	1	0.2%		0.0%	1	0.2%		0.0%
Tennessee		0.0%		0.0%		0.0%		0.0%		0.0%	1	0.2%
Virginia	5	0.8%	4	0.7%	5	0.9%	8	1.6%	6	1.2%	8	1.6%
WEST												
California	2	0.3%	1	0.2%	2	0.4%		0.0%	1	0.2%	2	0.4%
Washington		0.0%	2	0.3%	1	0.2%		0.0%	2	0.4%	2	0.4%
Other	4	0.7%	6	1.0%	6	1.1%	4	0.8%	1	0.2%	4	0.8%
INTERNATIONAL	10	1.7%	6	1.0%	7	1.2%	6	1.2%	20	3.9%	6	1.2%
TOTAL	592		572		566		506		516		511	

Source: Registrar's Office

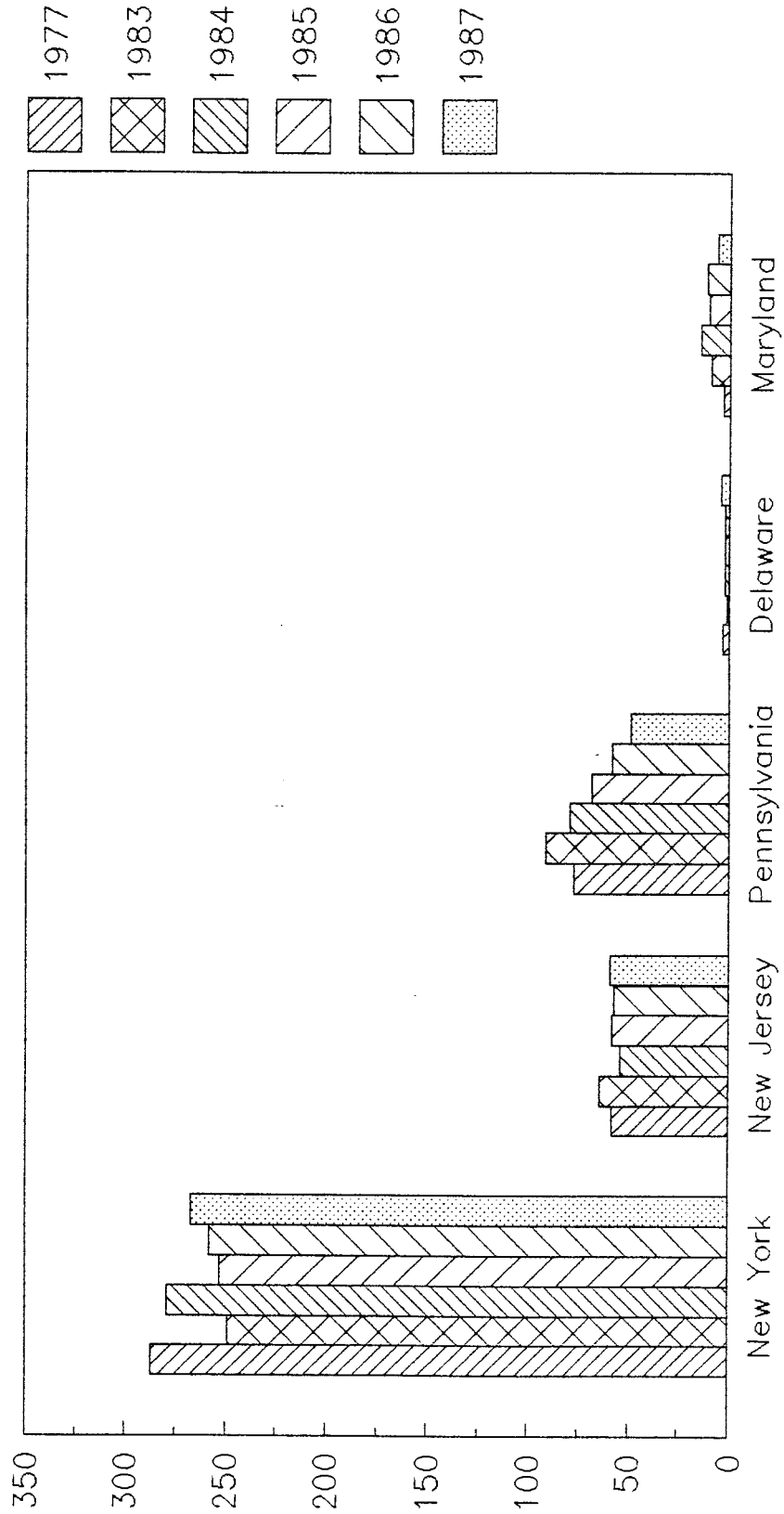
IR/ah

8/88

ENROLLMENT BY STATE OF ORIGIN

SELECTED YEARS

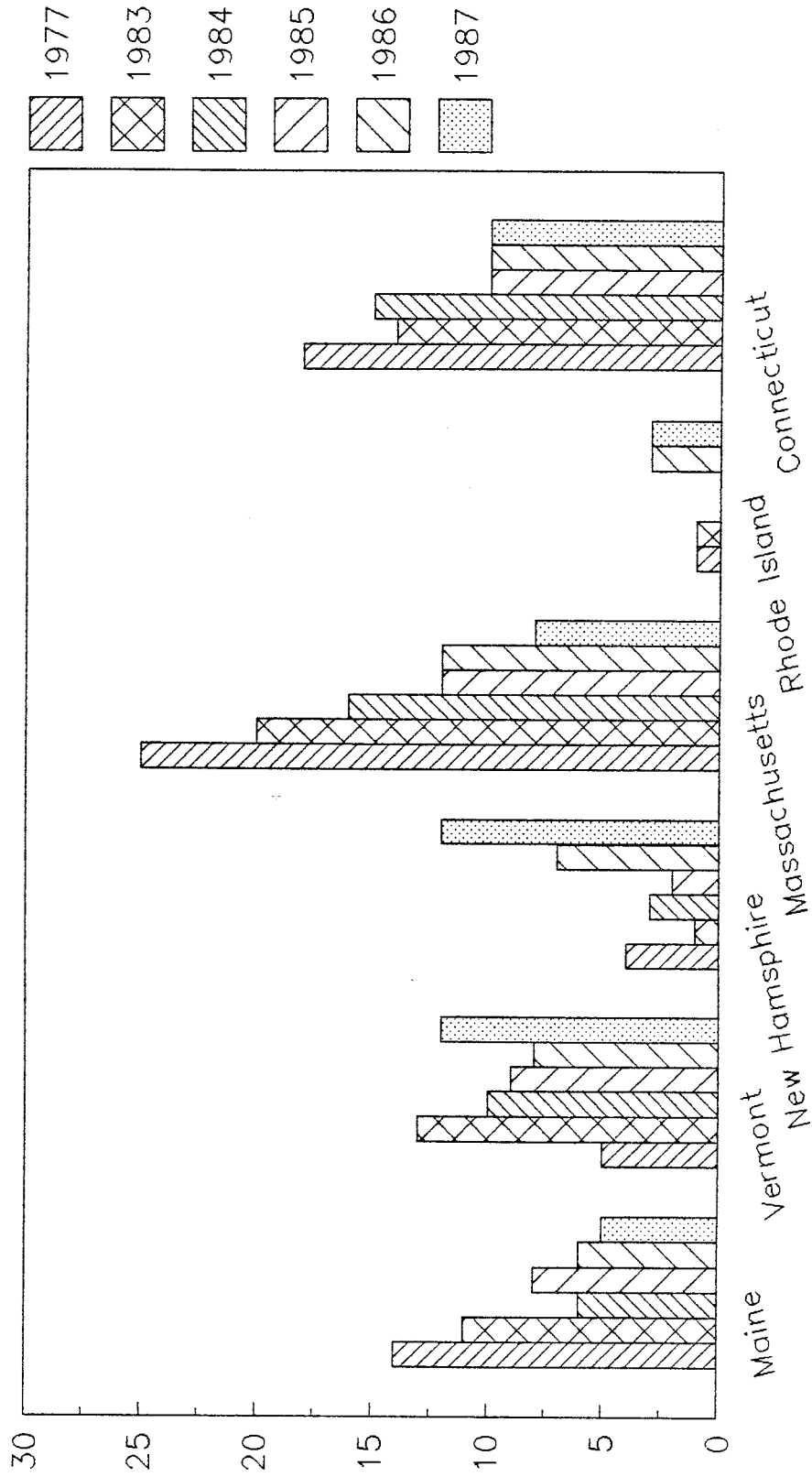
MID-ATLANTIC



ENROLLMENT BY STATE OF ORIGIN

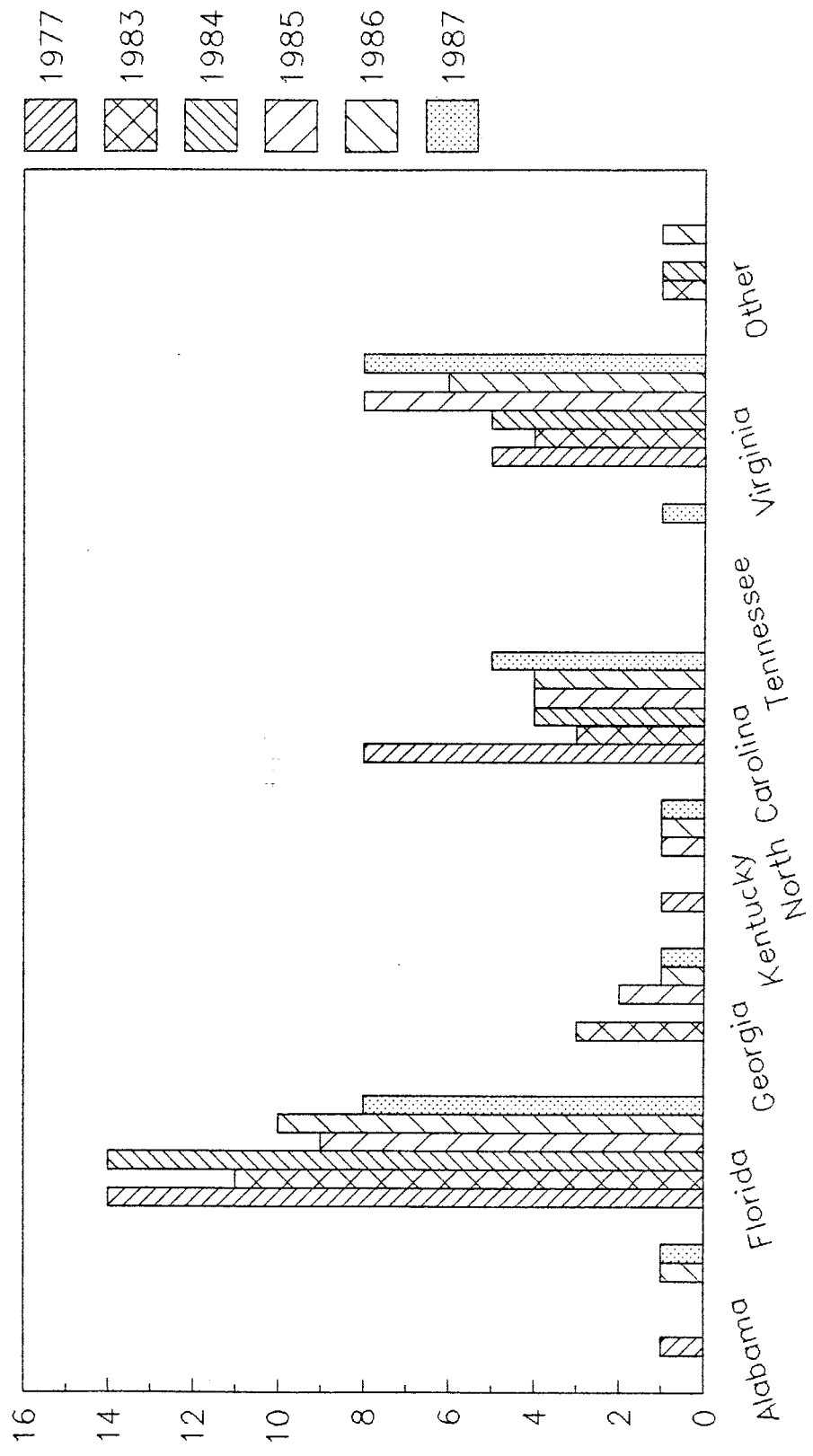
SELECTED YEARS

NEW ENGLAND



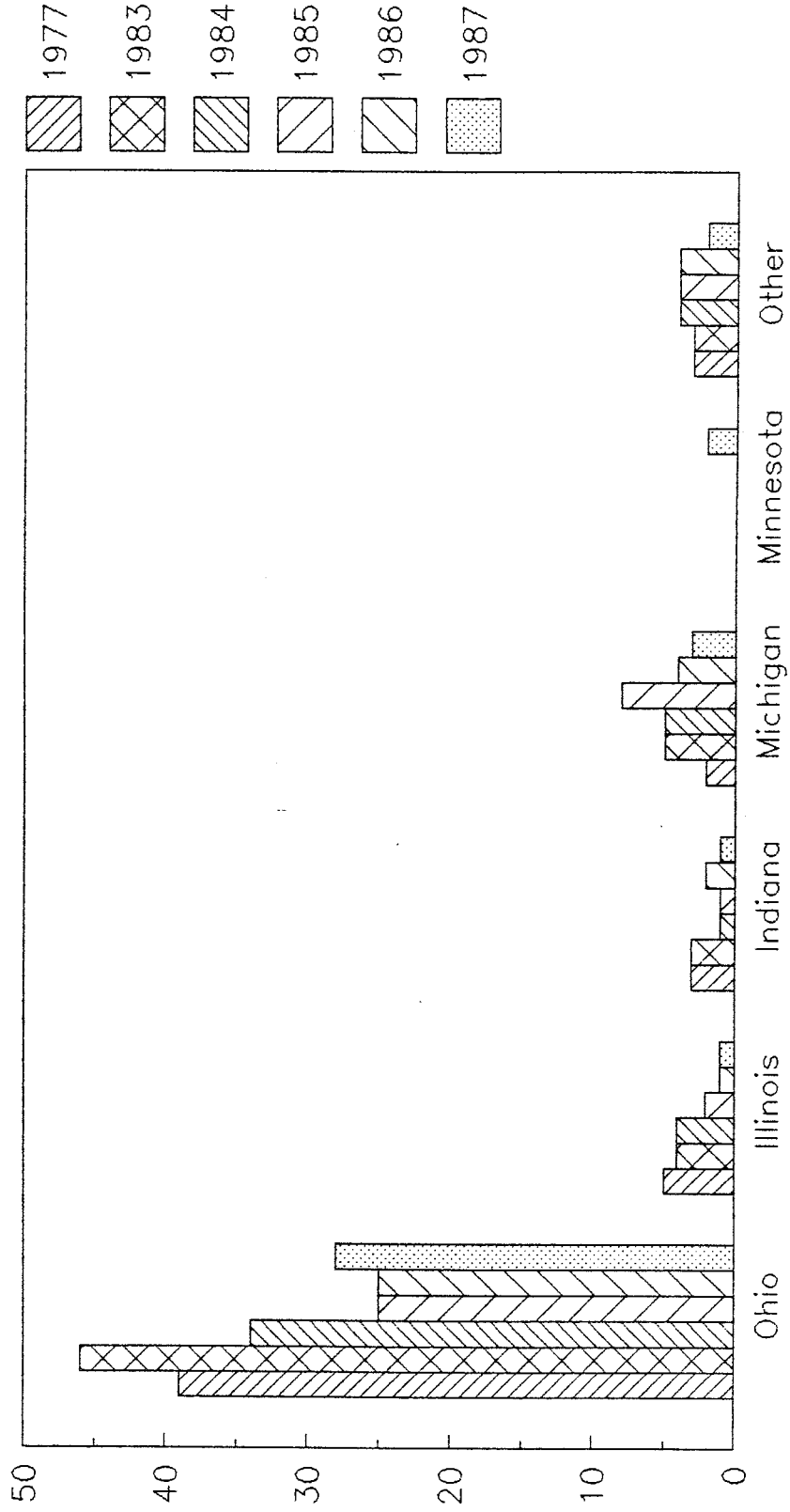
Prepared by Ron Ruegsegger

ENROLLMENT BY STATE OF ORIGIN SELECTED YEARS SOUTH



Prepared by Ron Ruegsegger

ENROLLMENT BY STATE OF ORIGIN SELECTED YEARS MID - WEST



ENROLLMENT
BY NEW YORK COUNTY

	77-78	83-84	84-85	85-86	86-87	87-88
Albany		1				3
Allegany		4		3		1
Broome		3		4		5
Cattaraugus						
Cayuga		1				2
Chautauqua		5		1		1
Chemung		6		2		1
Chenango		2		3		4
Clinton		1				
Columbia		3		3		4
Cortland						
Delaware		5				2
Dutchess		3		4		4
Erie		4		3		4
Essex						
Franklin						
Fulton		4		1		
Genesee				1		
Greene		1		1		1
Hamilton				1		
Herkimer		1		4		7
Jefferson		1		2		3
Lewis						
Livingston						
Madison						
Monroe		1		4		3
Montgomery		1		1		2
Nassau		5		3		6
New York						
Manhattan		13		8		8
Bronx		8		15		21
Brooklyn		10		13		20
Queens		12		12		27
Richmond		1		4		8
Niagara		1		1		
Oneida		5		4		4
Onondaga		2		2		8
Ontario		1		1		
Orange		6		9		11
Orleans						
Oswego		6		3		3
Otsego		2		1		
Putnam		2				
Rensselaer		2		1		1

ENROLLMENT
BY NEW YORK COUNTY

	77-78	83-84	84-85	85-86	86-87	87-88
Rockland		81		70		94
St. Lawrence				5		
Saratoga		3		1		2
Schenectady		1				2
Schoharie		1		1		
Schuyler						1
Seneca						
Steuben		3		1		1
Suffolk		6		10		7
Sullivan		3		2		2
Tioga				3		
Tompkins				2		2
Ulster		2		2		1
Warren		1		4		2
Washington		2				
Wayne		1				1
Westchester		14		13		8
Wyoming						
Yates						

NOTE: Data for 77-78, 84-85, and 86-87 not available

Source: Registrar's Office
IR/ah
8/88

ENROLLMENT
BY DENOMINATIONAL AFFILIATION

	77 - 78		83 - 84		84 - 85		85 - 86		86 - 87		87 - 88	
	#	%	#	%	#	%	#	%	#	%	#	%
C & M A	288	48.0%	344	60.4%	331	58.2%	288	56.4%	265	51.3%	281	55.1%
Assemblies of God	15	2.5%	12	2.1%	7	1.2%	10	2.0%	11	2.1%	14	2.7%
Baptist	61	10.2%	61	10.7%	57	10.0%	56	11.0%	59	11.4%	46	9.0%
Bible Fellowship		0.0%	2	0.4%		0.0%		0.0%	3	0.6%	3	0.6%
Brethren	4	0.7%	4	0.7%	3	0.5%	2	0.4%	2	0.4%	1	0.2%
Christian Church	1	0.2%	1	0.2%	1	0.2%	2	0.4%	2	0.4%	1	0.2%
Christian Reformed	2	0.3%		0.0%	1	0.2%	2	0.4%	4	0.8%	2	0.4%
Church of God	1	0.2%	6	1.1%	4	0.7%	1	0.2%	2	0.4%	2	0.4%
Congregational	5	0.8%	2	0.4%	4	0.7%	2	0.4%	3	0.6%	4	0.8%
Conservative Baptist	5	0.8%	8	1.4%	7	1.2%	5	1.0%	7	1.4%	4	0.8%
Episcopal	1	0.2%	3	0.5%		0.0%	1	0.2%	1	0.2%	2	0.4%
Evangelical	7	1.2%		0.0%	2	0.4%		0.0%		0.0%		0.0%
Evangelical Free	15	2.5%	10	1.8%	6	1.1%	13	2.5%	16	3.1%	15	2.9%
Free Methodist		0.0%		0.0%		0.0%		0.0%	2	0.4%	1	0.2%
Friends		0.0%		0.0%		0.0%		0.0%		0.0%	1	0.2%
Full Gospel	2	0.3%		0.0%	1	0.2%	1	0.2%	1	0.2%	1	0.2%
Holiness	1	0.2%	1	0.2%		0.0%		0.0%		0.0%	1	0.2%
Independent	15	2.5%	11	1.9%	15	2.6%	10	2.0%	7	1.4%	6	1.2%
Independent Baptist		0.0%	11	1.9%	6	1.1%	2	0.4%	2	0.4%	2	0.4%
Inter-Denominational	1	0.2%	1	0.2%	1	0.2%		0.0%		0.0%		0.0%
Lutheran	3	0.5%	6	1.1%	2	0.4%	2	0.4%	2	0.4%	2	0.4%
Methodist	12	2.0%	13	2.3%	16	2.8%	10	2.0%	12	2.3%	6	1.2%
Nazarene	6	1.0%	2	0.4%	1	0.2%	1	0.2%	2	0.4%	2	0.4%
New Testament		0.0%		0.0%		0.0%		0.0%	1	0.2%	1	0.2%
Non-Denominational	94	15.7%	22	3.9%	36	6.3%	45	8.8%	43	8.3%	51	10.0%
Orthodox		0.0%		0.0%		0.0%		0.0%		0.0%	1	0.2%
Pentecostal	13	2.2%	12	2.1%	14	2.5%	16	3.1%	13	2.5%	15	2.9%
Presbyterian	24	4.0%	10	1.8%	23	4.0%	16	3.1%	14	2.7%	16	3.1%
Protestant	2	0.3%	2	0.4%		0.0%		0.0%		0.0%		0.0%
Reformed Church	4	0.7%	1	0.2%	1	0.2%	1	0.2%	3	0.6%	2	0.4%
Roman Catholic		0.0%	1	0.2%		0.0%		0.0%	4	0.8%	1	0.2%
Salvation Army		0.0%	1	0.2%	1	0.2%	2	0.4%	1	0.2%	5	1.0%
Southern Baptist	1	0.2%		0.0%		0.0%	1	0.2%	1	0.2%		0.0%
United Missionary		0.0%		0.0%		0.0%		0.0%		0.0%	1	0.2%
United Methodist	9	1.5%	2	0.4%	1	0.2%		0.0%		0.0%	5	1.0%
United Presbyterian	2	0.3%		0.0%		0.0%		0.0%		0.0%	1	0.2%
Wesleyan		0.0%	1	0.2%	1	0.2%	1	0.2%	2	0.4%	1	0.2%
Undesignated		0.0%		0.0%	15	2.6%	16	3.1%	29	5.6%	13	2.5%
Other	6	1.0%	20	3.5%	12	2.1%	5	1.0%	3	0.6%		0.0%
TOTAL	<u>600</u>		<u>570</u>		<u>569</u>		<u>511</u>		<u>517</u>		<u>510</u>	

Source: Registrar's Office

IR/ah

8/88

ENROLLMENT BY
RACE, GENDER, AGE, & MARITAL STATUS

	77-78		83-84		84-85		85-86		86-87		87-88	
	M	F	M	F	M	F	M	F	M	F	M	F
RACE												
Black Non-Hispanic	*		36		37		31		41		35	
Hispanic	*		37		38		33		27		34	
Asian American	*		23		44		45		37		46	
White Non-Hispanic	*		489		458		407		444		421	
Non-Resident Alien	*								7			
AGE DISTRIBUTION												
15-19	*	*	70	132	77	118	67	106	48	113	61	127
20-24	*	*	128	160	134	140	115	127	114	65	118	119
25-29	*	*	17	22	30	20	33	16	34	22	34	20
30-34	*	*	9	6	13	7	15	7	25	7	18	5
35+	*	*	12	15	12	20	12	15	18	23	13	4
MARITAL STATUS												
Married-Campus Housing	18	3	18	3	18	3	19	2	20	2	20	2
Married-Commuter	32	13	3	25	17	24	20	19	19	23	21	17
	---	---	---	---	---	---	---	---	---	---	---	---
Total	50	16	21	28	35	27	39	21	39	25	41	19
	===		===		===		===		===		===	
Total Married	66		49		62		60		64		60	
Single Resident	*	*	176	270	190	231	161	215	147	219	156	227
Single-Commuter	*	*	17	32	7	38	18	23	25	35	29	39
			---	---	---	---	---	---	---	---	---	---
Total	*	*	193	302	197	269	179	238	172	254	185	266
			===	===	===	===	===	===	===	===	===	===
Total Single	*		495		466		417		426		451	
	===		===		===		===		===		===	
Total Married and Single	66		544		528		477		490		511	

NOTE: When figures are not broken down by gender they occur in the column for males.

* Data not available

Source: Race and Age - Registrar's Office
Marital Status - Dean of Student's Office

FRESHMAN PROFILE
BY AVERAGE SAT

	77-78	83-84	84-85	85-86	86-87	87-88
SAT SCORE						
Verbal	*	440		455	427	421
Math	*	450		450	435	450
Total	910.8	890	0	905	862	871

* No individual scores available

TRANSFER PROFILE
BY INTENDED MAJOR

	77-78	83-84	84-85	85-86	86-87	87-88
PROFESSIONAL						
Christian Ed.				4	2	1
Missiology				2	2	1
Pastoral Ministry				4	7	1
Elementary Ed.				5	11	5
Music Ed.				3	2	1
Business						4
Youth Ministry						1
LIBERAL ARTS						
Bible				3	9	3
Cross Culture						1
English				3		3
History					1	
Interdisciplinary						1
Philosophy					1	1
Psychology				1	5	5
Religion					1	
Social Sciences					2	4
MUSIC						
Church Music					2	1
Composition						
Keybd/Orches						
Voice				1		

Source: Admissions Office
IR/ah
8/88

RETENTION RATES
FALL ENROLLMENT OF FRESHMEN & TRANSFERS

Year	Orig #	2nd Yr # %	3rd Yr # %	4th Yr # %	5th Yr # %
1978	216	135 62.5%	106 49.1%	88 40.7%	83 38.4%
1979	220	140 63.6%	104 47.3%	99 45.0%	99 45.0%
1980	185	119 64.3%	100 54.1%	91 49.2%	83 44.9%
1981	172	116 67.4%	90 52.3%	79 45.9%	77 44.8%
1982	157	118 75.2%	91 58.0%	83 52.9%	82 52.2%
1983	200	131 65.5%	96 48.0%	82 41.0%	76 38.0%
1984	192	116 60.4%	91 47.4%	87 45.3%	
1985	162	102 63.0%	83 51.2%		
1986	176	111 63.1%			
1987					

The first column represents matriculated students enrolled for the first time at Nyack College. The succeeding columns represent the number and percent of students from the original group who have graduated or are returning for the fall term of the next year. Extension students are not included.

Source: Registrar's Office
IR/ah
8/88

RETENTION RATES
FALL ENROLLMENT OF FRESHMEN

Year	Orig #	2nd Yr #	Yr %	3rd Yr #	Yr %	4th Yr #	Yr %	5th Yr #	Yr %
1978	155	101	65.2%	78	50.3%	66	42.6%	63	40.6%
1979	160	106	66.3%	79	49.4%	75	46.9%	74	46.3%
1980	127	89	70.1%	75	59.1%	68	53.5%	58	45.7%
1981	126	85	67.5%	65	51.6%	55	43.7%	53	42.1%
1982	103	78	75.7%	59	57.3%	56	54.4%	55	53.4%
1983	145	97	66.9%	68	46.9%	57	39.3%	55	37.9%
1984	141	87	61.7%	67	47.5%	63	44.7%		
1985	113	73	64.6%	57	50.4%				
1986	123	88	71.5%						
1987	131								

The first column represents matriculated students enrolled for the first time at Nyack College. The succeeding columns represent the number and percent of students from the original group who have graduated or are returning for the fall term of the next year. Extension students are not included.

Source: Registrar's Office
IR/ah
8/88

RETENTION RATES
FALL ENROLLMENT OF TRANSFERS

Year	Orig #	2nd Yr #	Yr %	3rd Yr #	Yr %	4th Yr #	Yr %	5th Yr #	Yr %
1978	61	34	55.7%	28	45.9%	22	36.1%	20	32.8%
1979	60	34	56.7%	25	41.7%	24	40.0%	25	41.7%
1980	58	30	51.7%	25	43.1%	23	39.7%	25	43.1%
1981	46	31	67.4%	25	54.3%	24	52.2%	24	52.2%
1982	54	40	74.1%	32	59.3%	27	50.0%	27	50.0%
1983	55	34	61.8%	28	50.9%	25	45.5%	21	38.2%
1984	51	29	56.9%	24	47.1%	24	47.1%		
1985	49	29	59.2%	26	53.1%				
1986	53	23	43.4%						
1987	59								

The first column represents matriculated students enrolled for the first time at Nyack College. The succeeding columns represent the number and percent of students from the original group who have graduated or are returning for the fall term of the next year. Extension students are not included.

Source: Registrar's Office
IR/ah
8/88

NATIONAL TEACHER EXAMINATION
AVERAGES

	*PASSING SCORES	83-84	84-85	85-86	86-87	87-88
COMMUNICATION SKILLS	650	662	665	671	663	665
GENERAL KNOWLEDGE	648	654	658	667	659	660
PROFESSIONAL KNOWLEDGE	646	661	657	664	659	655

*Established by New York State

Source: Education Department
IR/ah
8/88

UNDERGRADUATE ASSESSMENT PROGRAM
AVERAGE SCORES OF SUBCATAGORIES

	83-84	84-85	85-86	86-87	87-88
NATURAL SCIENCES		453	482	466	
HUMANITIES		473	472	470	
SOCIAL SCIENCES		412	410	410	

Source: Academic Office
IR/ah
8/88

CURRICULUM

ENROLLMENT
BY CLASS, MAJOR, FULL-TIME AND PART-TIME
87-88

	Junior		Senior		Full-Time		Part-Time		Total	
	#	%	#	%	#	%	#	%	#	%
=====										
ASSOCIATE DEGREES										
Associate in Arts		0.0%		0.0%		0.0%		0.0%		0.0%
Associate in Science		0.0%		0.0%		0.0%		0.0%		0.0%
PROFESSIONAL MAJORS										
Christian Education	1	0.2%	4	0.8%	5	1.0%		0.0%	5	1.0%
Missiology	2	0.4%	5	1.0%	7	1.4%		0.0%	7	1.4%
Pastoral Ministry	1	0.2%	12	2.3%	13	2.5%	1	0.2%	14	2.7%
Elementary Education	14	2.7%	4	0.8%	18	3.5%	2	0.4%	20	3.9%
Music Education	4	0.8%	6	1.2%	10	2.0%	1	0.2%	11	2.2%
Interdisciplinary BS		0.0%		0.0%	0	0.0%		0.0%	0	0.0%
Business Administration	2	0.4%		0.0%	2	0.4%		0.0%	2	0.4%
LIBERAL ARTS MAJORS										
Bible	19	3.7%	8	1.6%	27	5.3%	1	0.2%	28	5.5%
Cross Cultural Studies	1	0.2%	3	0.6%	4	0.8%		0.0%	4	0.8%
English	10	2.0%	3	0.6%	13	2.5%	1	0.2%	14	2.7%
History	3	0.6%	2	0.4%	5	1.0%		0.0%	5	1.0%
Philosophy	3	0.6%	2	0.4%	5	1.0%		0.0%	5	1.0%
Psychology	22	4.3%	11	2.2%	33	6.5%	2	0.4%	35	6.8%
Religion	1	0.2%	4	0.8%	5	1.0%		0.0%	5	1.0%
Social Science	14	2.7%	6	1.2%	20	3.9%	3	0.6%	23	4.5%
Interdisciplinary BA		0.0%		0.0%	0	0.0%		0.0%	0	0.0%
MUSIC MAJORS										
Church Music	1	0.2%	1	0.2%	2	0.4%		0.0%	2	0.4%
Composition		0.0%		0.0%	0	0.0%		0.0%	0	0.0%
Keybd/Orches		0.0%		0.0%	0	0.0%		0.0%	0	0.0%
Voice		0.0%	2	0.4%	2	0.4%		0.0%	2	0.4%

Source: Registrar's Office

IR/ah

8/88

DEGREES CONFERRED
BY MAJOR

	1978		1983		1984		1985		1986		1987	
	#	%	#	%	#	%	#	%	#	%	#	%
ASSOCIATE DEGREES												
Associates in Science			2	1.7%	2	2.0%	1	1.1%	3	3.6%		0.0%
Associates in Arts			5	4.3%	4	3.9%	6	6.4%	2	2.4%	5	5.7%
Subtotal			7	6.1%	6	5.9%	7	7.4%	5	6.0%	5	5.7%
BACHELOR OF SCIENCE												
Christian Ed.	8	8.7%	5	4.3%	14	13.7%	8	8.5%	1	1.2%	4	4.5%
Elementary Ed.	13	14.1%	15	13.0%	15	14.7%	9	9.6%	18	21.4%	15	17.0%
Interdisciplinary		0.0%		0.0%		0.0%		0.0%		0.0%		0.0%
Missiology	15	16.3%	6	5.2%	5	4.9%	2	2.1%	2	2.4%	5	5.7%
Pastoral Ministries	4	4.3%	3	2.6%	1	1.0%	3	3.2%	2	2.4%	3	3.4%
Business Administration		0.0%		0.0%		0.0%		0.0%		0.0%		0.0%
Sub-total	40	43.5%	29	25.2%	35	34.3%	22	23.4%	23	27.4%	27	30.7%
BACHELOR OF ARTS												
Bible		0.0%	12	10.4%	5	4.9%	7	7.4%	4	4.8%	9	10.2%
Cross Cultural Studies		0.0%		0.0%		0.0%		0.0%		0.0%		0.0%
English	5	5.4%	7	6.1%	8	7.8%	10	10.6%	8	9.5%	8	9.1%
History	2	2.2%	5	4.3%	10	9.8%	3	3.2%	6	7.1%	3	3.4%
Interdisciplinary		0.0%		0.0%		0.0%		0.0%		0.0%		0.0%
Philosophy	2	2.2%	2	1.7%	1	1.0%	1	1.1%		0.0%	2	2.3%
Psychology	11	12.0%	12	10.4%	12	11.8%	24	25.5%	22	26.2%	13	14.8%
Religion	5	5.4%	5	4.3%	7	6.9%	5	5.3%	2	2.4%	5	5.7%
Social Science	8	8.7%	26	22.6%	13	12.7%	7	7.4%	5	6.0%	9	10.2%
Sub-total	33	35.9%	69	60.0%	56	54.9%	57	60.6%	47	56.0%	49	55.7%
BACHELOR OF MUSIC												
Music Ed.	7	7.6%	4	3.5%	2	2.0%	2	2.1%	3	3.6%	4	4.5%
Keyboard/Instrumental	7	7.6%	3	2.6%		0.0%	4	4.3%	2	2.4%	2	2.3%
Vocal	4	4.3%		0.0%	1	1.0%	1	1.1%	1	1.2%		0.0%
Composition	1	1.1%	1	0.9%		0.0%		0.0%		0.0%		0.0%
Sub-total	19	20.7%	8	7.0%	3	2.9%	7	7.4%	6	7.1%	6	6.8%
BACHELOR OF SACRED MUSIC												
Church Music		0.0%	2	1.7%	2	2.0%	1	1.1%	3	3.6%	1	1.1%
TOTAL	<u>92</u>		<u>115</u>		<u>102</u>		<u>94</u>		<u>84</u>		<u>88</u>	

Source: Registrar's Office

IR/ah

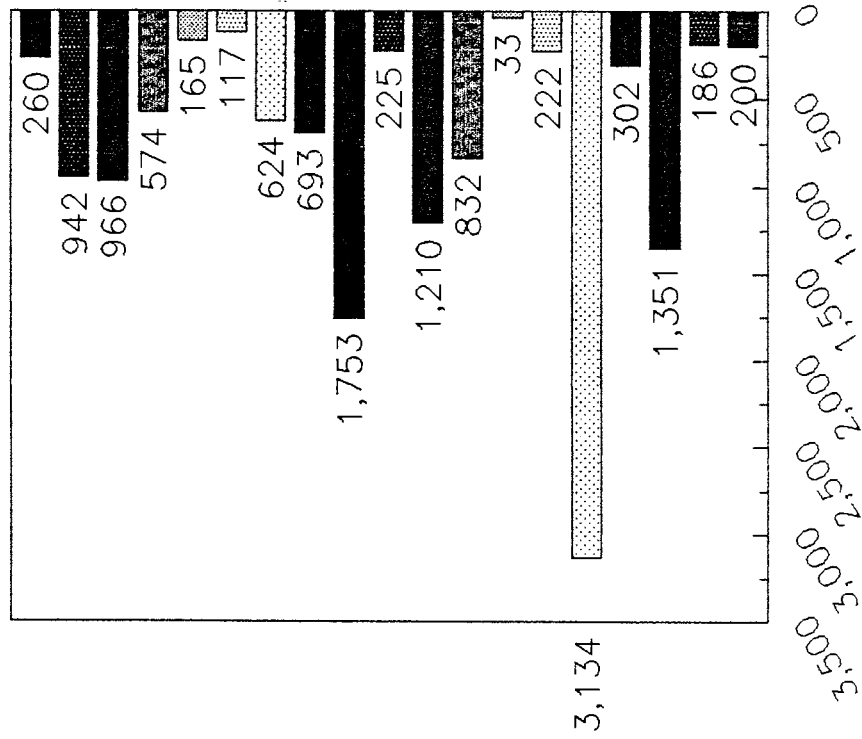
8/88

DEPARTMENT PRODUCTIVITY

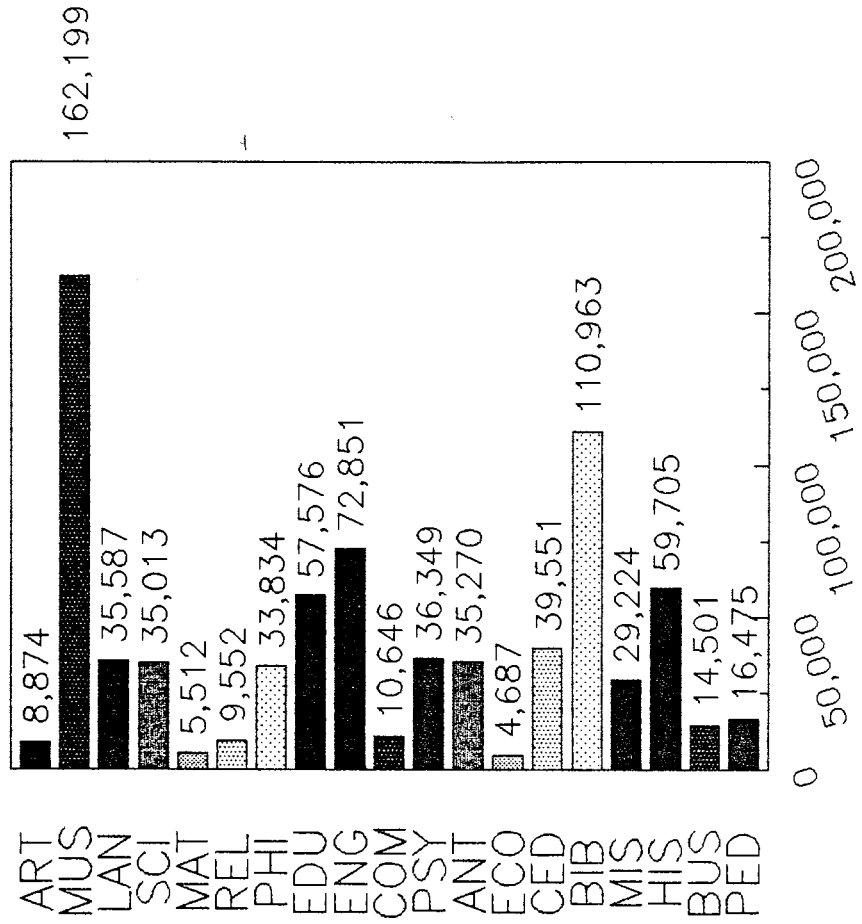
	86-87			87-88		
	INSTR. COST	CR. HR. TAUGHT	\$ PER CR. HR.	INSTR. COST	CR. HR. TAUGHT	\$ PER CR. HR.
Fine Arts	8,874	260	23.88	15,643	259	6.19
Music	162,199	942	(102.22)	180,123	829	(151.25)
Languages	35,587	966	18.28	49,319	815	3.55
Science	35,013	574	(0.56)	45,242	555	(12.03)
Mathematics	5,512	165	20.76	8,258	183	18.10
Religion	9,552	117	(27.48)	14,141	74	(127.87)
Philosophy	33,834	624	(0.06)	48,438	703	(5.67)
Education	57,576	693	(25.22)	81,374	637	(60.91)
English	72,851	1753	12.60	97,731	1656	4.21
Communications	10,646	225	6.98	12,457	365	29.21
Psychology	36,349	1210	24.26	61,088	1657	26.36
Anthro/Soc	35,270	832	11.77	48,762	722	(4.31)
Economics	4,678	33	(87.87)	6,830	66	(40.26)
Christian Ed	39,551	222	(123.64)	31,319	251	(61.35)
Bible/Theo	110,963	3134	18.76	159,619	3561	18.40
Missiology	29,224	302	(42.61)	38,622	330	(53.81)
Hist/Pol Science	59,705	1351	9.97	81,054	1450	7.33
Business Admin	14,501	186	(23.80)	22,339	423	10.42
Physical Education	16,475	200	(18.13)	22,301	162	(69.21)

DEPARTMENTAL PRODUCTIVITY

1986-87



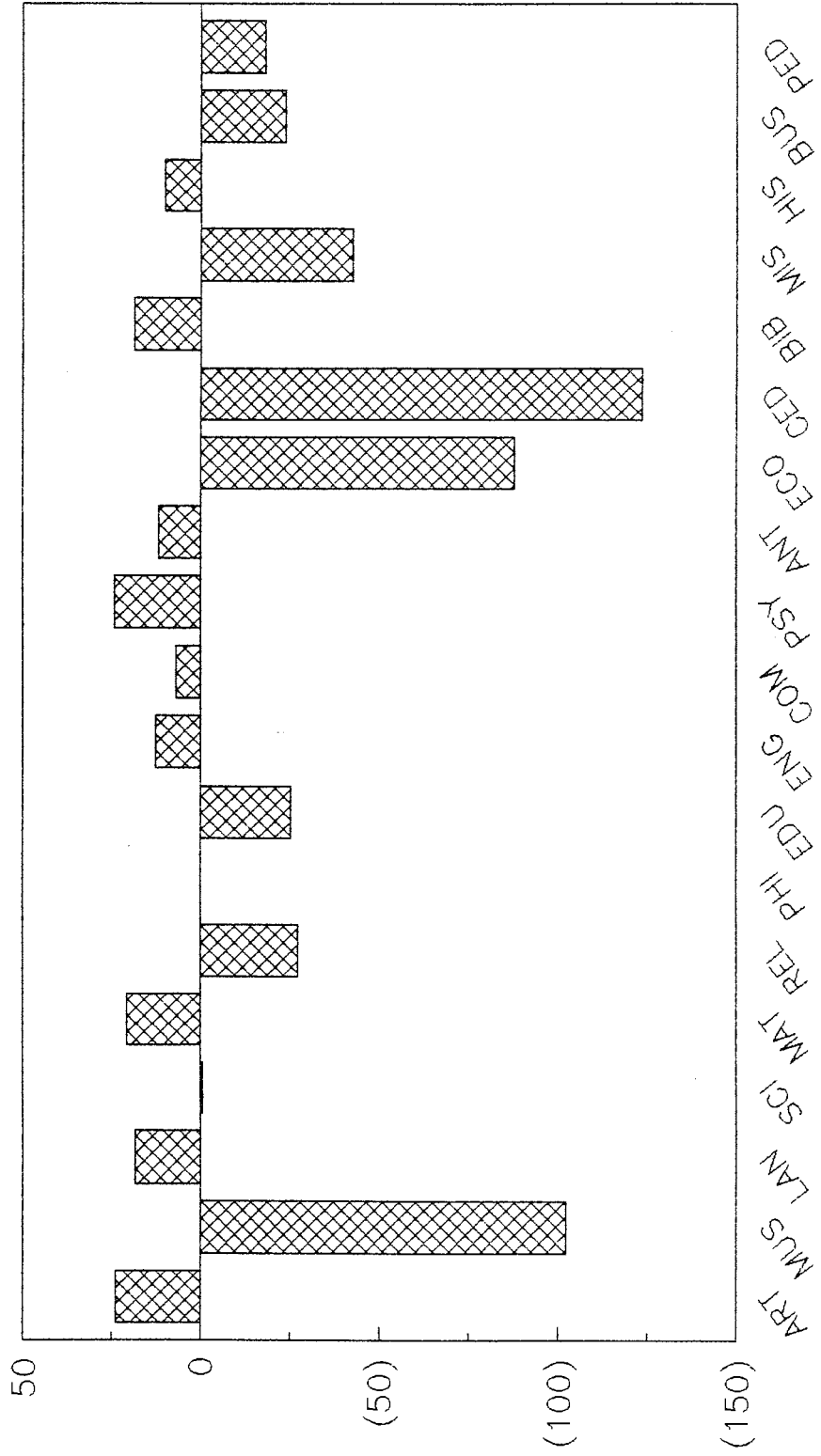
CREDIT HRS TAUGHT



INSTRUCTIONAL COSTS

Prepared by Ron Rueggeger

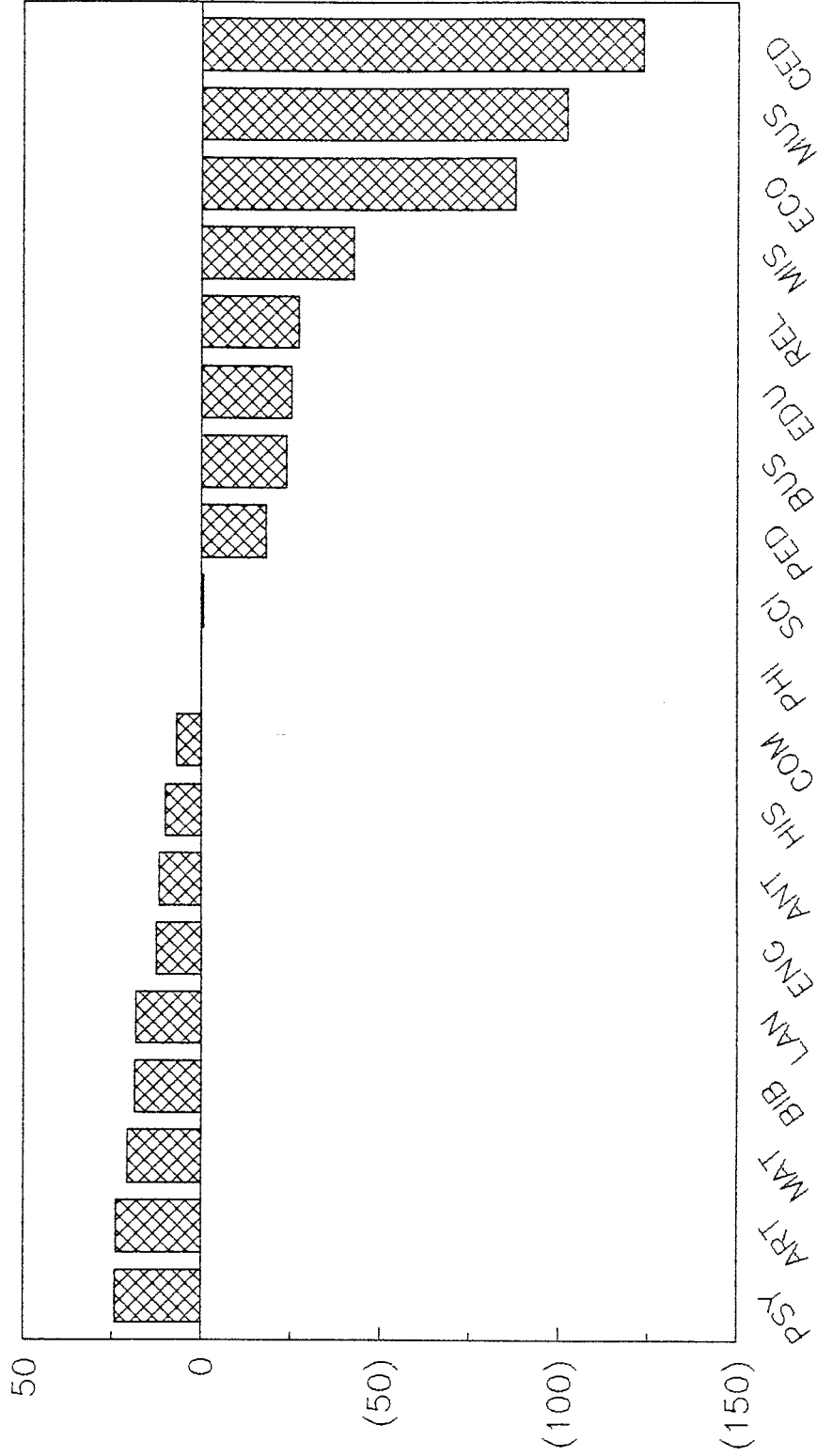
DEV FROM AVER NET LOSS/CR HR 1986-87



AVER NET LOSS/CR HR IS \$52.97

Prepared by Ron Rueggeger

DEV FROM AVER NET LOSS/CR HR
 By Rank Order
 1986-87

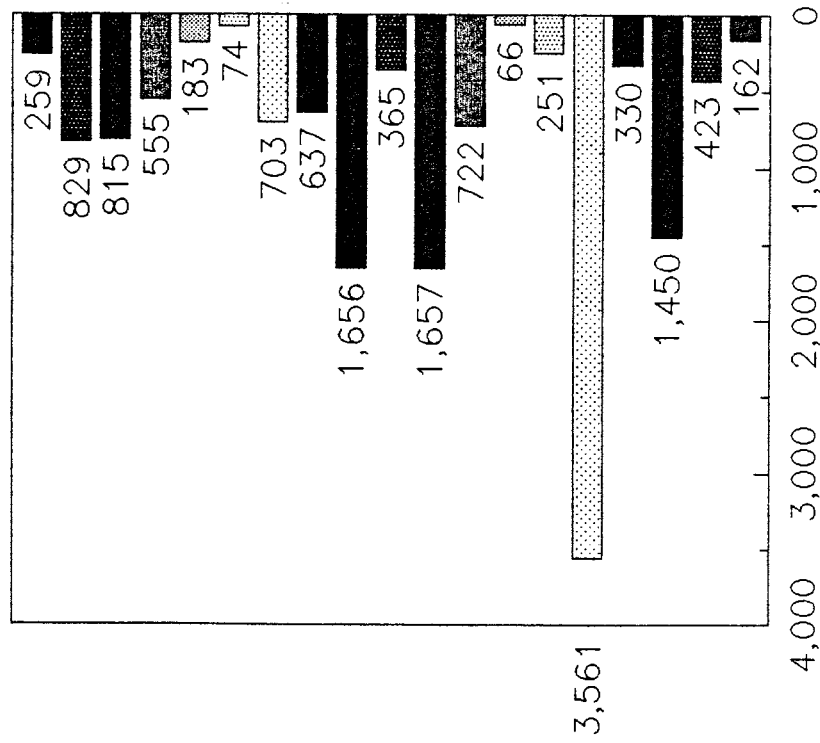


AVER NET LOSS/CR HR IS \$52.97

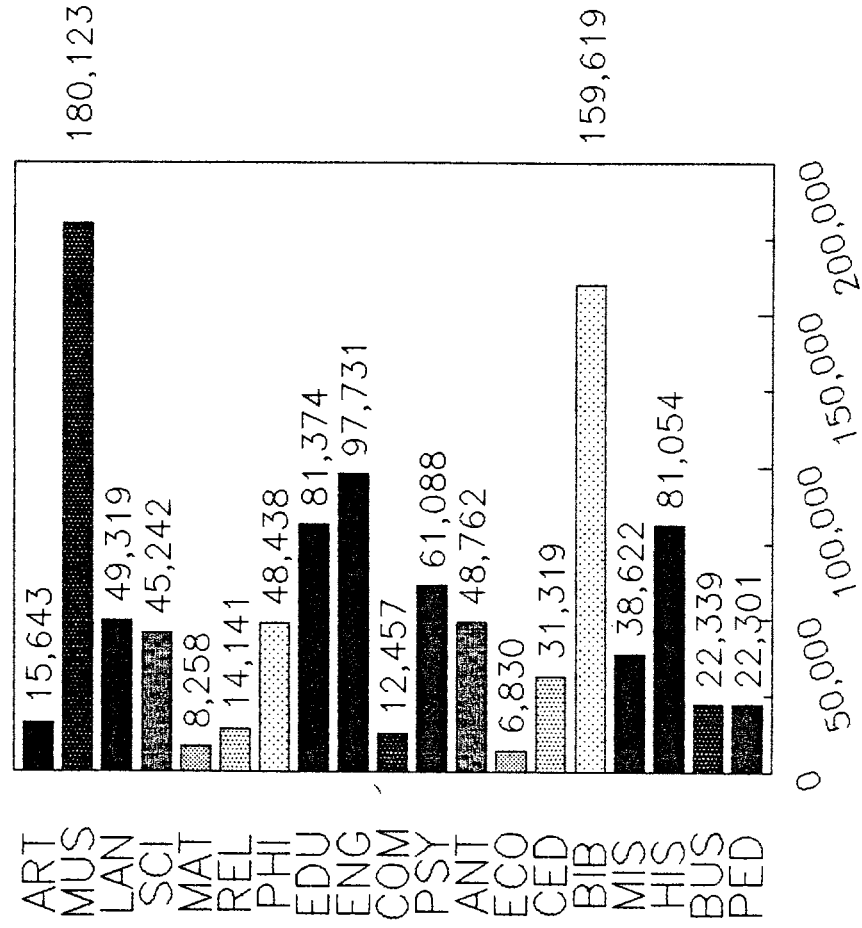
Prepared by Ron Ruegsegger

DEPARTMENTAL PRODUCTIVITY

1987-88



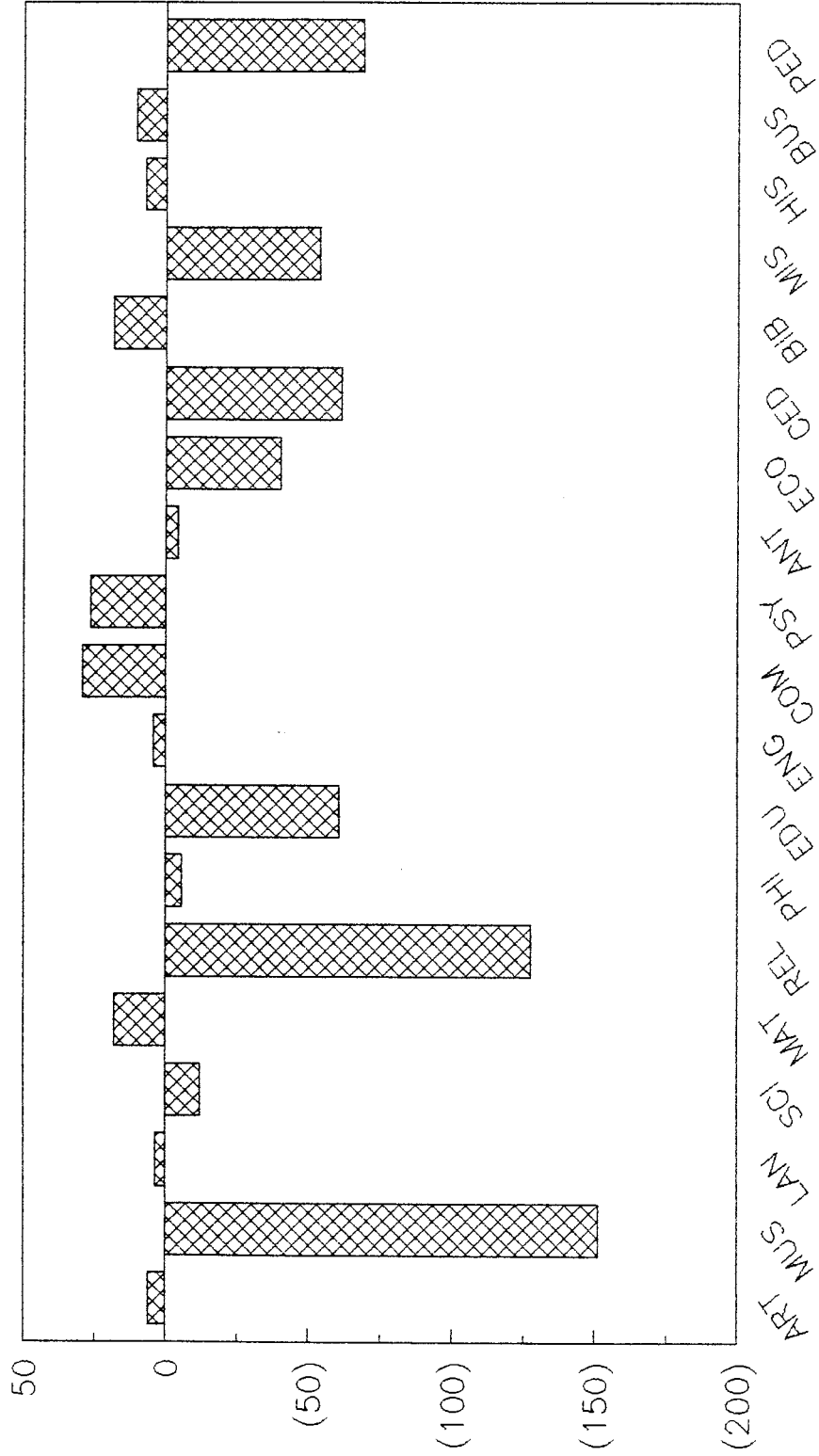
CREDIT HRS TAUGHT



INSTRUCTIONAL COSTS

Prepared by Ron Ruegsegger

DEV FROM AVER NET LOSS/CR HR 1987-88



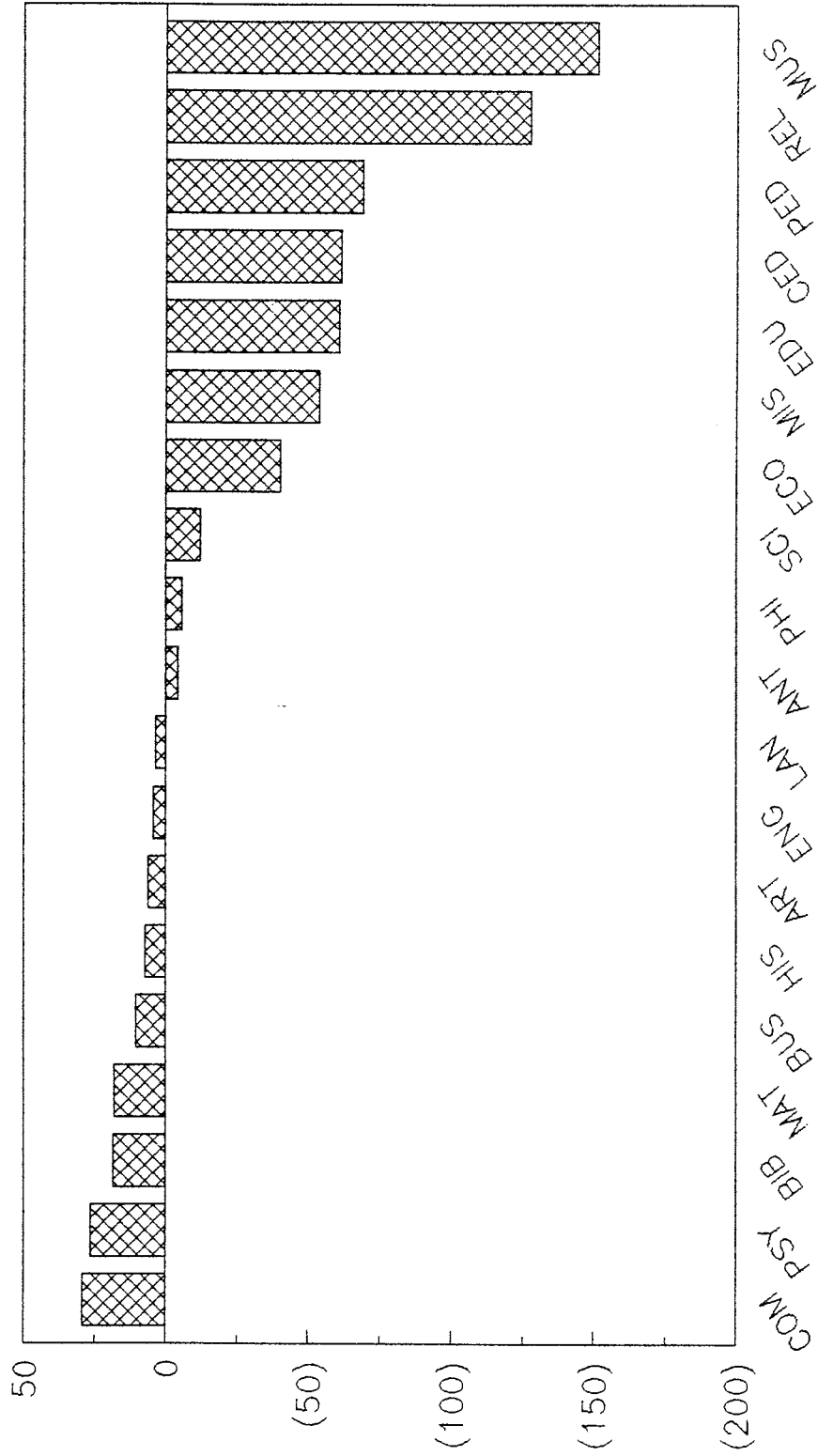
AVER NET LOSS/CR HR IS \$41.94

Prepared by Ron Ruegsegger

DEV FROM AVER NET LOSS/CR HR

By Rank Order

1987-88



AVER NET LOSS/CR HR IS \$41.94

Prepared by Ron Ruegsegger

FACULTY

FACULTY BY RANK, GENDER, STATUS, SERVICE, RACE

	77-78		83-84		84-85		85-86		86-87		87-88	
	#	%	#	%	#	%	#	%	#	%	#	%
PROFESSOR												
Gender: Male			9	28.1%	7	22.6%	8	24.2%	7	22.6%	5	16.1%
Female			2	6.3%	2	6.5%	2	6.1%	2	6.5%	2	6.5%
Status: Full			10	31.3%	8	25.8%	8	24.2%	8	25.8%	6	19.4%
Part			1	3.1%	1	3.2%	2	6.1%	1	3.2%	1	3.2%
Service: Ave. Years			19		19.9		18.9		19.1		20.3	65.5%
Tenured			10	31.3%	8	25.8%	8	24.2%	7	22.6%	7	22.6%
Race: Black/Non-His				0.0%		0.0%		0.0%		0.0%		0.0%
Hispanic				0.0%		0.0%		0.0%		0.0%		0.0%
Asian/Amer			1	3.1%		0.0%		0.0%		0.0%		0.0%
White/Non-His			10	31.3%	9	29.0%	10	30.3%	9	29.0%	7	22.6%
Non-res Alien				0.0%		0.0%		0.0%		0.0%		0.0%
ASSOCIATE PROFESSOR												
Gender: Male			7	21.9%	6	19.4%	5	15.2%	4	12.9%	4	12.9%
Female			1	3.1%	1	3.2%	1	3.0%	1	3.2%	1	3.2%
Status: Full			7	21.9%	6	19.4%	4	12.1%	4	12.9%	4	12.9%
Part			1	3.1%	1	3.2%	2	6.1%	1	3.2%	1	3.2%
Service: Ave. Years			10.8		9.7		10.5		12.8		13.4	43.2%
Tenured			5	15.6%	3	9.7%	3	9.1%	3	9.7%	3	9.7%
Race: Black/Non-His				0.0%		0.0%		0.0%		0.0%		0.0%
Hispanic			1	3.1%	1	3.2%		0.0%		0.0%		0.0%
Asian/Amer				0.0%		0.0%		0.0%		0.0%		0.0%
White/Non-His			7	21.9%	6	19.4%	6	18.2%	5	16.1%	5	16.1%
Non-res Alien				0.0%		0.0%		0.0%		0.0%		0.0%
ASSISTANT PROFESSOR												
Gender: Male			5	15.6%	7	22.6%	7	21.2%	7	22.6%	9	29.0%
Female			1	3.1%	1	3.2%	2	6.1%	2	6.5%	2	6.5%
Status: Full			4	12.5%	5	16.1%	7	21.2%	6	19.4%	8	25.8%
Part			2	6.3%	3	9.7%	2	6.1%	3	9.7%	3	9.7%
Service: Ave. Years			11.3		7.3		8.3		8		7.4	23.9%
Tenured			2	6.3%	2	6.5%	1	3.0%	3	9.7%	1	3.2%
Race: Black/Non-His				0.0%		0.0%		0.0%		0.0%		0.0%
Hispanic				0.0%		0.0%		0.0%		0.0%		0.0%
Asian/Amer				0.0%		0.0%		0.0%		0.0%		0.0%
White/Non-His			6	18.8%	8	25.8%	9	27.3%	9	29.0%	11	35.5%
Non-res Alien				0.0%		0.0%		0.0%		0.0%		0.0%

FACULTY BY RANK, GENDER, STATUS, SERVICE, RACE

	77-78		83-84		84-85		85-86		86-87		87-88	
	#	%	#	%	#	%	#	%	#	%	#	%
INSTRUCTORS												
Gender: Male			7	21.9%	5	16.1%	5	15.2%	6	19.4%	4	12.9%
Female				0.0%	2	6.5%	3	9.1%	2	6.5%	5	16.1%
Status: Full			2	6.3%	4	12.9%	3	9.1%	1	3.2%	2	6.5%
Part			5	15.6%	3	9.7%	5	15.2%	7	22.6%	7	22.6%
Service: Ave. Years			6.1		5.9		5.4		5.9		2.6	8.4%
Tenured				0.0%		0.0%	0	0.0%		0.0%		0.0%
Race: Black/Non-His				0.0%		0.0%		0.0%		0.0%		0.0%
Hispanic				0.0%		0.0%		0.0%		0.0%		0.0%
Asian/Amer				0.0%		0.0%		0.0%		0.0%		0.0%
White/Non-His			7	21.9%	7	22.6%	8	24.2%	8	25.8%	9	29.0%
Non-res Alien				0.0%		0.0%		0.0%		0.0%		0.0%
TOTAL			32		31		33		31		32	
ADJUNCT*												
Gender: Male			7		10		17		14		14	
Female			7		6		9		7		5	
Status: Full												
Part			14		16		26		21		19	
Race: Black/Non-His											1	
Hispanic			1		1		2		2		1	
Asian/Amer											1	
White/Non-His			13		19		26		24		16	
Non-res Alien												
NONTEACHING												
Gender: Male			5		9		9		9		8	
Female			2		3		2		2			
Status: Full			7		12		11		11		8	
Part												
Tenured			1		1		1		1			
Race: Black/Non-His					1		1		1		1	
Hispanic												
Asian/Amer			1		1		1					
White/Non-His			6		10		9		10		7	
Non-res Alien												

*Data does not include Commission Faculty

Source: Academic Office
IR/ah
8/88

STUDENT/FACULTY RATIO

	77-78	83-84	84-85	85-86	86-87	87-88
ENROLLMENT: HEAD COUNT	592	572	569	477	490	511
ENROLLMENT: FTE	573.96	540.2	542.25	489.5	493.6	488.8
PART-TIME FTE	25.96	24.2	32.25	24.5	30.6	22.8
FULL-TIME FACULTY	*	32.04	30.21	32.25	30.25	32.4
FTE STUDENT/ FACULTY RATIO	*	1/17	1/18	1/15	1/16	1/15

NOTE: * Data not available

Source: Academic/Registrar's Offices
IR/ah
8/88

ALUMNI

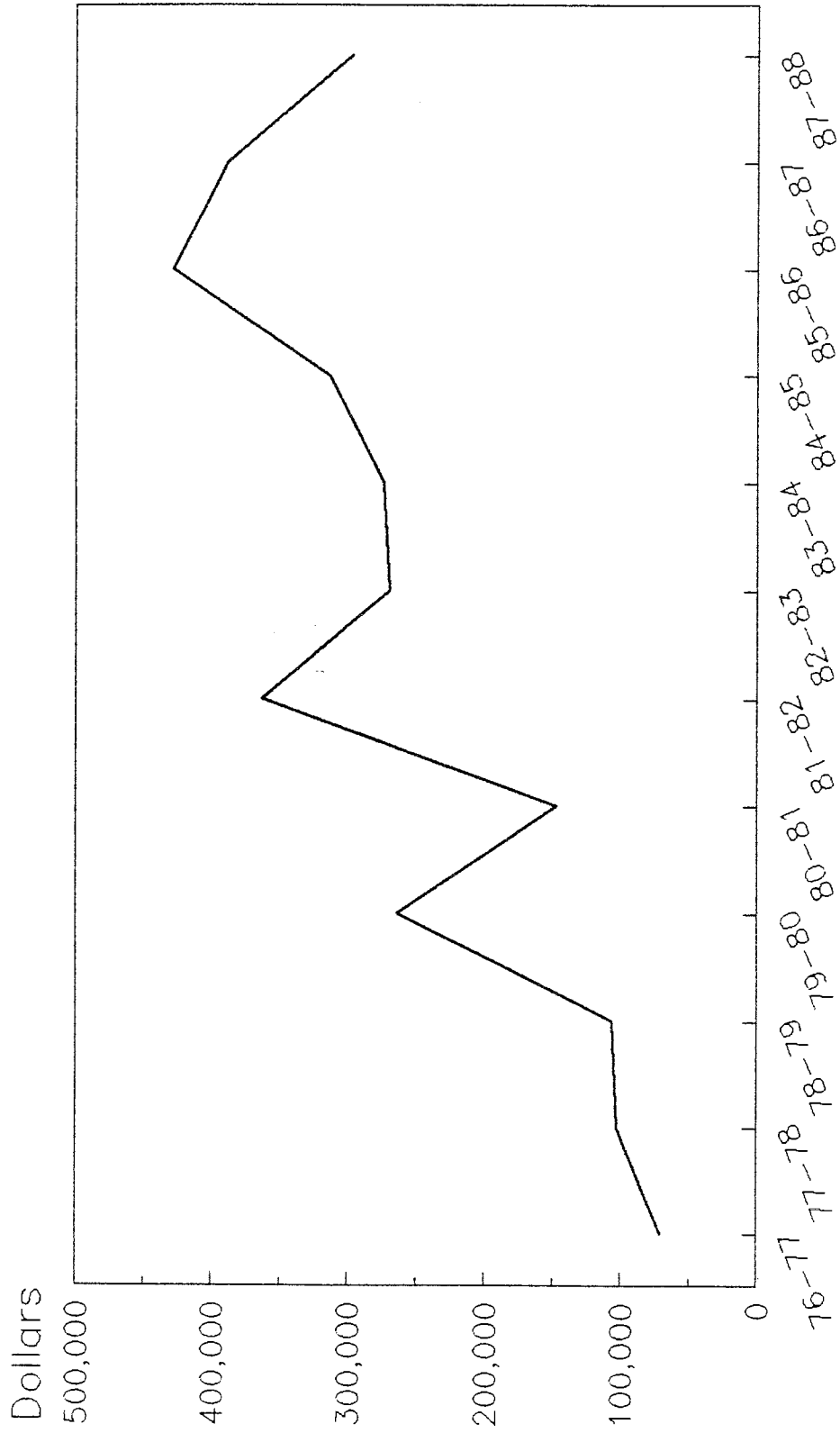
ALUMNI SUPPORT
1976 - 1988

Fiscal Year	Active Mailing List	# of Donors	Average Gift	Total Support	% Change From Last Yr
=====					
1976-77	*	766	\$92.66	\$70,974	
1977-78	*	945	\$108.96	\$102,968	31.1%
1978-79	*	1,083	\$98.56	\$106,739	3.5%
1979-80	*	915	\$288.62	\$264,091	59.6%
1980-81	*	936	\$157.59	\$147,502	-79.0%
1981-82	*	1,158	\$314.03	\$363,644	59.4%
1982-83	*	972	\$277.78	\$270,003	-34.7%
1983-84	*	1,356	\$202.46	\$274,538	1.7%
1984-85	*	1,221	\$256.70	\$313,428	12.4%
1985-86	*	925	\$464.02	\$429,216	27.0%
1986-87	*	1,201	\$323.32	\$388,312	-10.5%
1987-88	6653	749	\$396.67	\$297,104	-30.7%

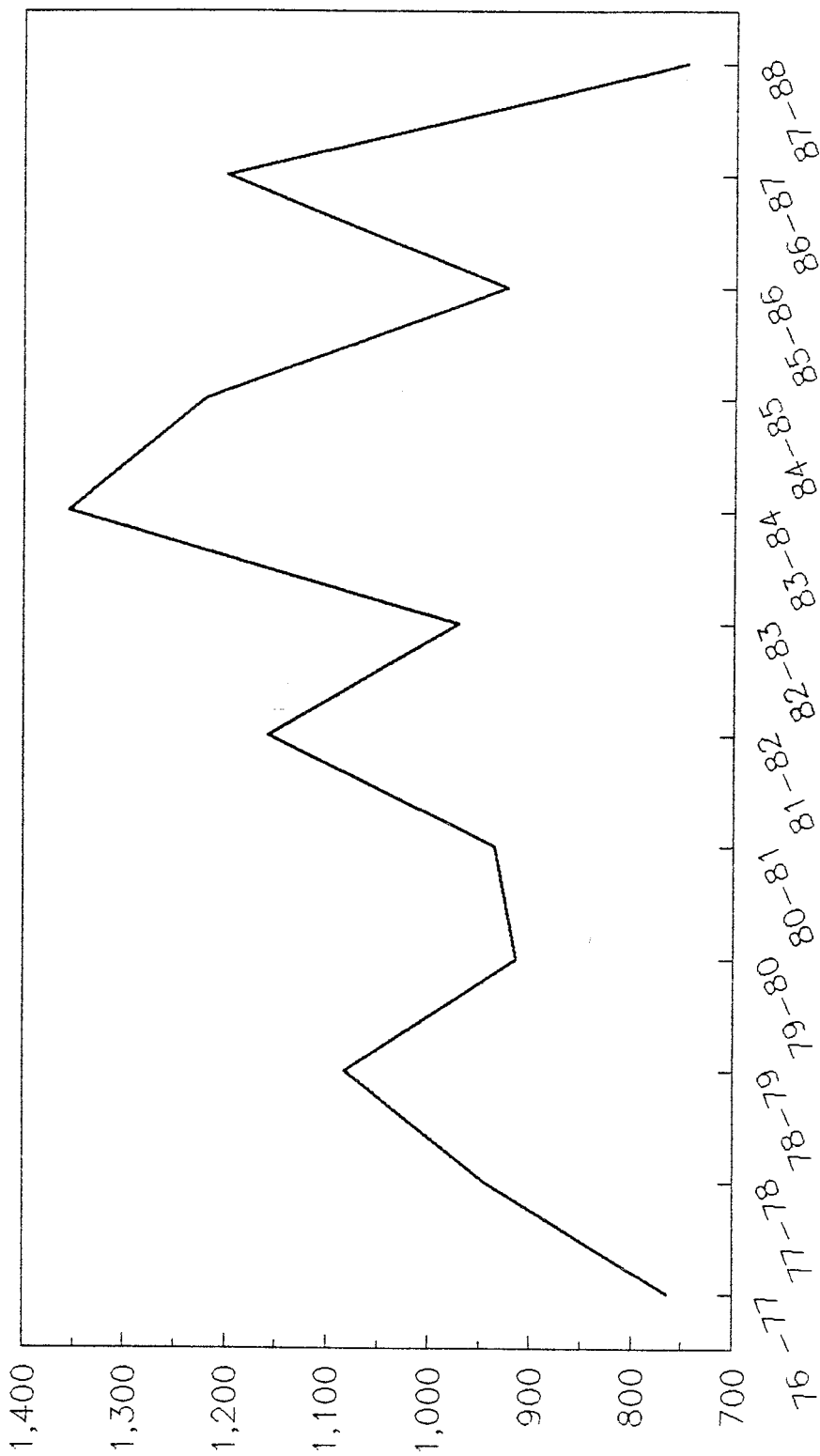
* Data not available

Source: Advancement Office
IR/ah
8/88

ALUMNI SUPPORT 1976 - 1988



NUMBER OF ALUMNI DONORS 1976 - 1988



Prepared by Anita Hamilton

GEOGRAPHIC DISTRIBUTION OF ALUMNI
BY SELECTED YEARS OF GRADUATION

	78	84	85	86	87	88
New York	39	70	74	75	110	109
OTHER MID-ATLANTIC						
New Jersey	19	23	17	19	22	28
Pennsylvania	20	20	22	29	30	14
Delaware	1	1			1	2
Maryland	2	4	5	6	4	7
NEW ENGLAND						
Maine	1	1	3		4	1
Vermont	3	2	1	2	4	1
New Hampshire	3	1				2
Massachusetts	6	8	4	11	7	2
Rhode Island						1
Connecticut	5	9	10	4	6	7
MID-WEST						
Ohio	5	8	7	9	11	10
Illinois	4	4	5	5	4	2
Indiana	2	5	1	4	4	2
Michigan	2		4		1	1
Minnesota	2	2	2		1	1
West Virginia			1		1	2
SOUTH						
Alabama		1		1	1	
Florida	5	12	5	4	10	3
Georgia		3	3	3	3	4
Kentucky	2	1	2	1		1
North Carolina	2	2	4	1	5	2
South Carolina		1	1	1		
Tennessee	1	1	2			1
Virginia	1	4	3	2	4	4
WEST						
California	5	5	5	1	6	3
Washington	2	4	4	6	2	2
Other	17	6	10	12	10	5
INTERNATIONAL	14	14	19	9	9	2

Source: Advancement Office
IR/ah
8/88

FACILITIES

FACILITIES

1. BASIC STRUCTURES	SQ. FT.	FLOORS	FUNCTIONS
Campus Center	55,380	5	Classrooms, Student Services & Offices
Christie Hall	37,693	B-4	Dormitory
Ed. Building	1,801	2	Classrooms & Offices
Faculty Offices	2,198	2	Offices
Moseley Hall	6,256	2	Dormitory
Pardington Hall	22,740	B-4	Classrooms. Offices, Chapel
Shuman Hall	23,194	B-2	Library & Offices
Simpson Hall	53,040	B-4	Dormitory & Classrooms
Bowman Gym			

2. ROOM USE CATEGORIES	SQ. FT.
Classrooms	9,663
Laboratories	5,729
Offices - Faculty	2,198
Offices - Administration	9,259
Assembly Facilities	2,840
Food Service	6,772
Lounges	9,522
Merchandising Facilities	1,332
Storage	10,904
Health Care Facilities	253
Athletic Facilities	16,014
Library	7,903
Dorm Rooms	43,296

3. TOTAL ACREAGE 65

NOTES:

Sections 1 & 2 are undergraduate totals.

The total acreage was estimated by the Treasurer's Office and includes both Nyack & ATS.

Source: Committee Reports of
Long Range Planning Committee
and B & G

IR/ah
8/88

FINANCES

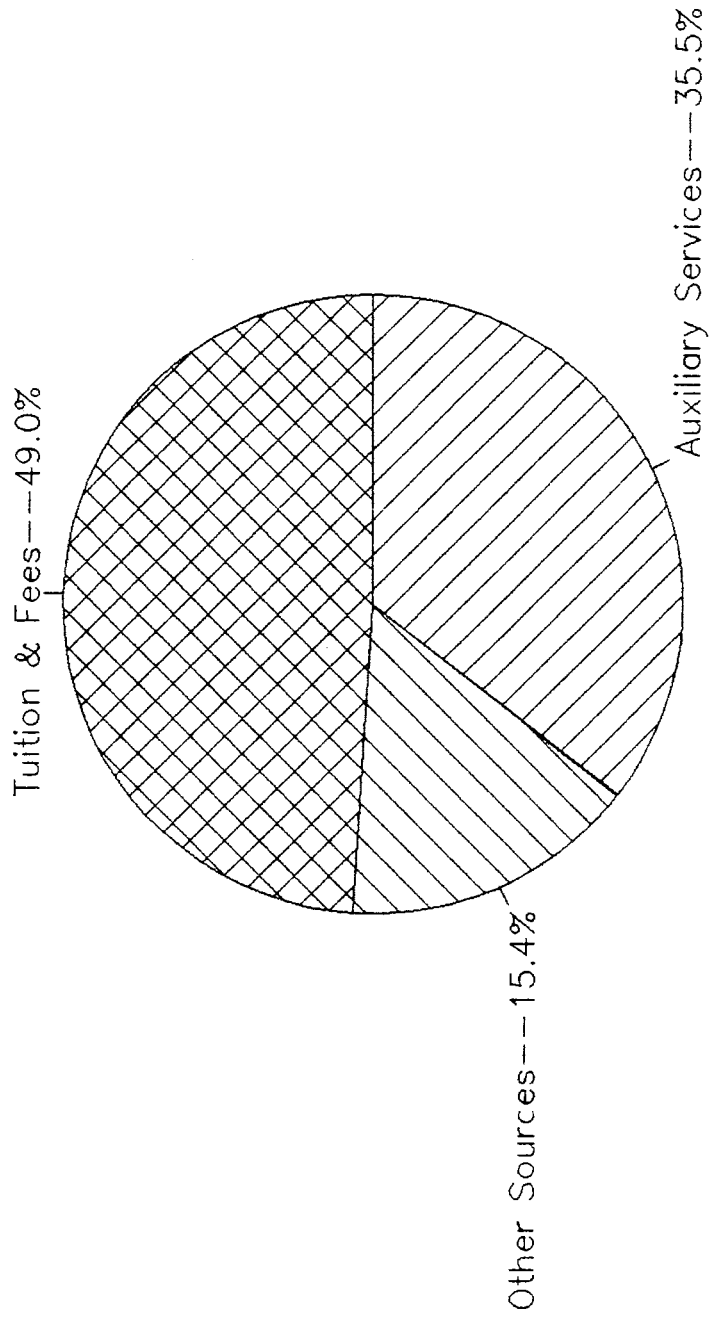
NYACK COLLEGE FINANCIAL PATTERNS

	ACTUAL 1985-86 -----	ACTUAL 1986-87 -----	BUDGET 1988-89 -----
TUITION & FEES -----			
TUITION	2,232,515	2,391,907	2,758,088
LAB FEES	5,105	4,560	
MUSIC & FINE ARTS FEES	28,838	31,905	
EDUCATION LAB FEES	2,578	2,375	
PHYSICAL EDUCATION FEES	2,016	1,894	
OTHER ACADEMIC FEES	63,819	4,284	
REGISTRATION FEES	70,940	117,312	
STUDENT ACTIVITY FEES ALLOCATED	(26,439)	(38,483)	
OTHER FEES	11,970	11,746	160,000
	-----	-----	-----
TOTAL TUITION & FEES	2,391,342	2,527,500	2,918,088
	-----	-----	-----
OTHER SOURCES OF INCOME -----			
GOVERNMENT INCOME	44,857	47,289	
PRIVATE GIFTS & GRANTS	427,386	217,022	500,000
STUDENT AID	41,353	113,250	30,500
SALES & SERVICES OF ED. ACTIVITIES	69,715	49,801	
RECOVERY OF INDIRECT COSTS	2,098	9,933	
OTHER SOURCES	166,726	154,996	409,825
	-----	-----	-----
TOTAL OTHER SOURCES	752,135	592,291	940,325
	-----	-----	-----
TOTAL EDUCATIONAL & GEN. REVENUE	3,143,477	3,119,791	3,858,413
	-----	-----	-----
AUXILIARY SERVICES	1,731,879	1,681,989	1,787,000
	-----	-----	-----
TOTAL CURRENT FUND REVENUE	4,875,356	4,801,780	5,645,413
	-----	-----	-----
INSTRUCTION -----			
FINE ARTS	6,833	12,130	10,233
MUSIC	169,635	185,772	177,312
LANGUAGES	31,136	36,329	48,340
SCIENCE	39,338	39,486	40,973
MATHEMATICS	4,251	5,846	11,547
RELIGION	8,113	12,980	165
PHILOSOPHY	31,958	41,396	49,844
EDUCATION	55,439	72,695	79,526
ENGLISH	63,481	78,295	83,412
COMMUNICATIONS	7,965	12,434	25,008
PSYCHOLOGY	32,961	42,876	47,735
ANTHROLOGY & SOCIOLOGY	31,118	39,534	36,775
ECONOMICS	4,446	5,846	7,075
CHRISTIAN EDUCATION	40,201	27,977	32,132
BIBLE & THEOLOGY	94,105	114,794	120,222

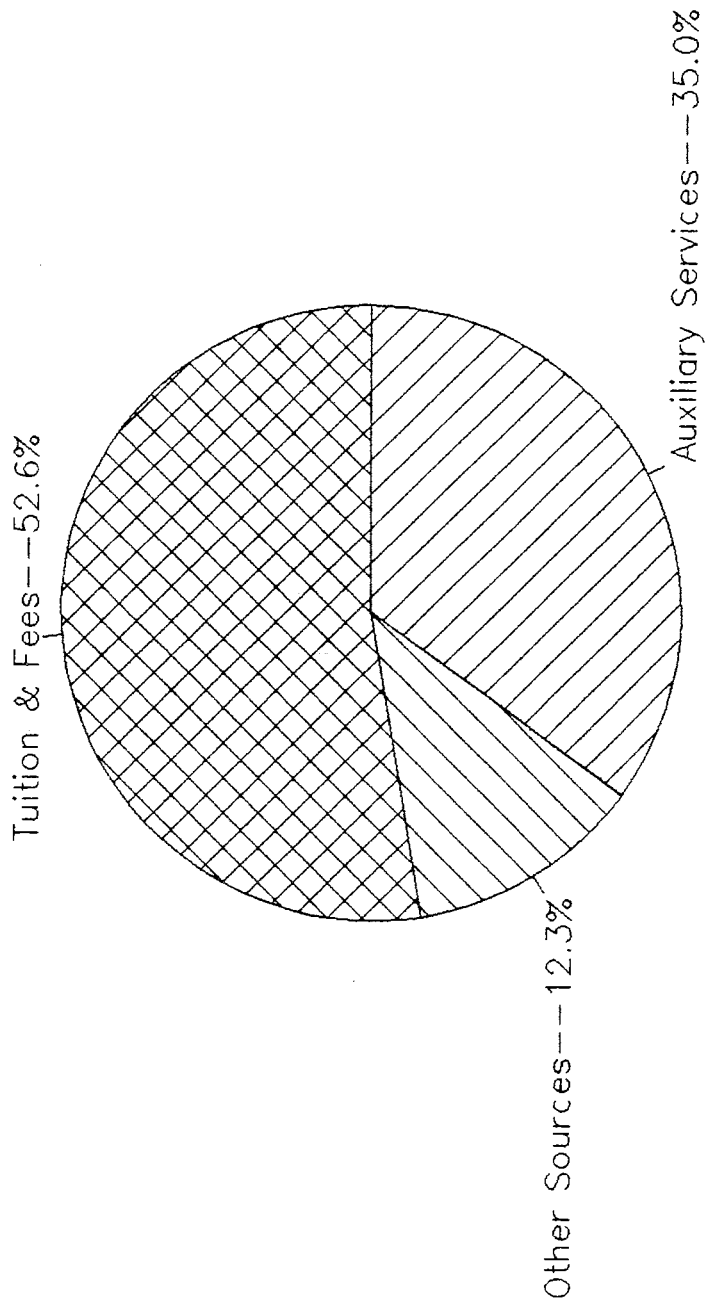
NYACK COLLEGE FINANCIAL PATTERNS

	ACTUAL 1985-86 -----	ACTUAL 1986-87 -----	BUDGET 1988-89 -----
MISSIOLOGY	29,369	34,814	38,134
HISTORY & POLITICAL SCIENCE	51,368	61,714	75,441
BUSINESS ADMINISTRATION	15,991	15,979	85,742
PASTORIAL THEOLOGY	954	0	90
DEVELOPMENTAL STUDIES	0	0	23,100
WINTERIUM	128	300	
SUMMER SCHOOL	0	0	
PHYSICAL EDUCATION	14,719	20,234	25,890
N.Y. SCHOOL OF THE BIBLE	2,880	2,200	1,800
KOREAN EXTENSION	13,484	7,534	
I.B.A.	6,681	7,037	
SEMINARIO BIBLICO ALIANZIA	0	0	
C.L.C. CONFERENCE	7,156	4,669	7,000
CONSORTIUM	0	0	1,000
ADULT EDUCATION	0	0	
OFF CAMPUS WINTERIUM	44,550	(6,655)	23,000
GENERAL INSTRUCTION	26,903	37,697	60,234
	-----	-----	-----
TOTAL INSTRUCTION	835,163	913,913	1,111,730
	-----	-----	-----
ACADEMIC SUPPORT	166,801	182,385	251,671
PUBLIC SERVICE	11,905	6,568	5,000
STUDENT SERVICES	653,196	667,256	854,455
INSTITUTIONAL SUPPORT	1,006,939	818,431	1,027,240
OPERATION OF PLANT	623,880	537,963	724,789
STUDENT AID	327,867	314,441	483,568
	-----	-----	-----
TOTAL E & G EXPENSE	3,625,751	3,440,957	4,458,453
	-----	-----	-----
E & G MANDATORY TRANSFERS	(29,612)	214,498	185,000
	-----	-----	-----
TOTAL E & G & MANDATORY TRANSFERS	3,596,139	3,655,455	4,643,453
	-----	-----	-----
AUXILLIARY SERVICES	863,117	954,078	1,063,574
AUX. SERV. MANDATORY TRANSFERS	372,477	58,234	160,000
	-----	-----	-----
TOTAL AUXILIARY & MAND. TRANS.	1,235,594	1,012,312	1,223,574
	-----	-----	-----
TOTAL NON-MANDATORY TRANSFERS		129,000	
	-----	-----	-----
TOTAL EXPENSES & TRANSFERS	4,831,733	4,796,767	5,867,027
	-----	-----	-----
TOTAL INCR. (DECR.) IN FUND BAL.	43,623	5,013	(221,614)
	=====	=====	=====
	ACTUAL 1985-86 -----	ACTUAL 1986-87 -----	BUDGET 1988-89 -----

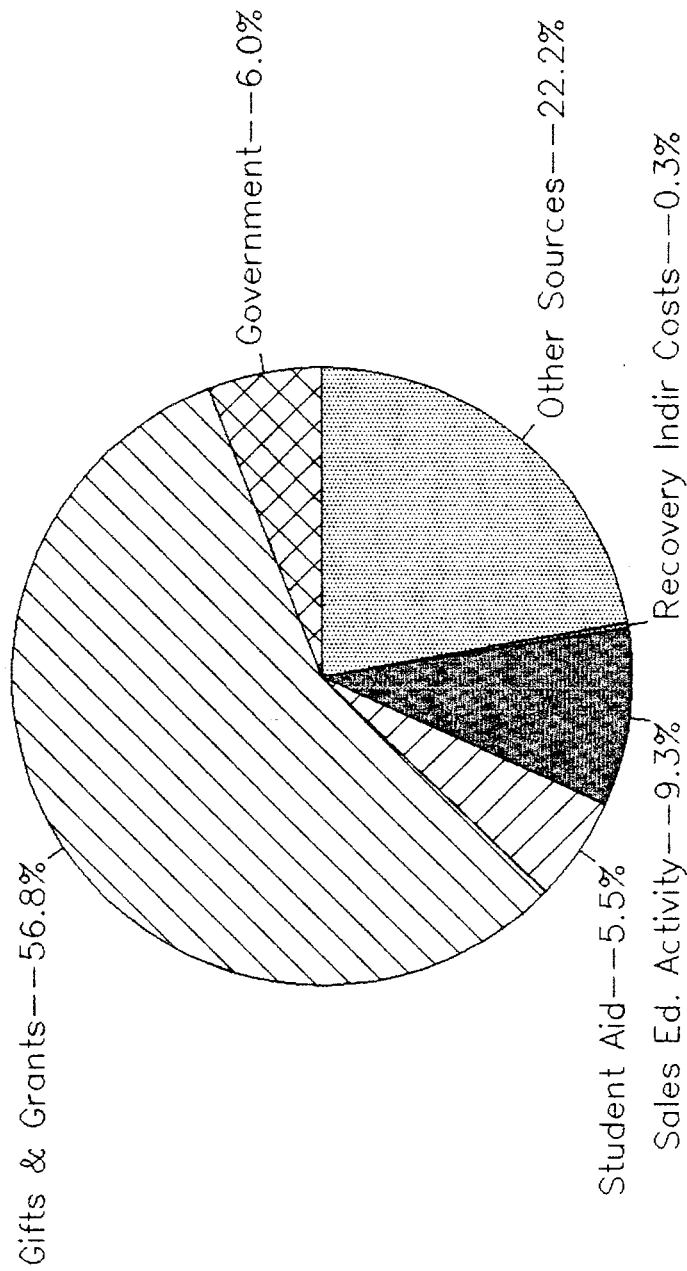
NYACK COLLEGE
TOTAL CURRENT FUND REVENUE
1985-86 Percentages



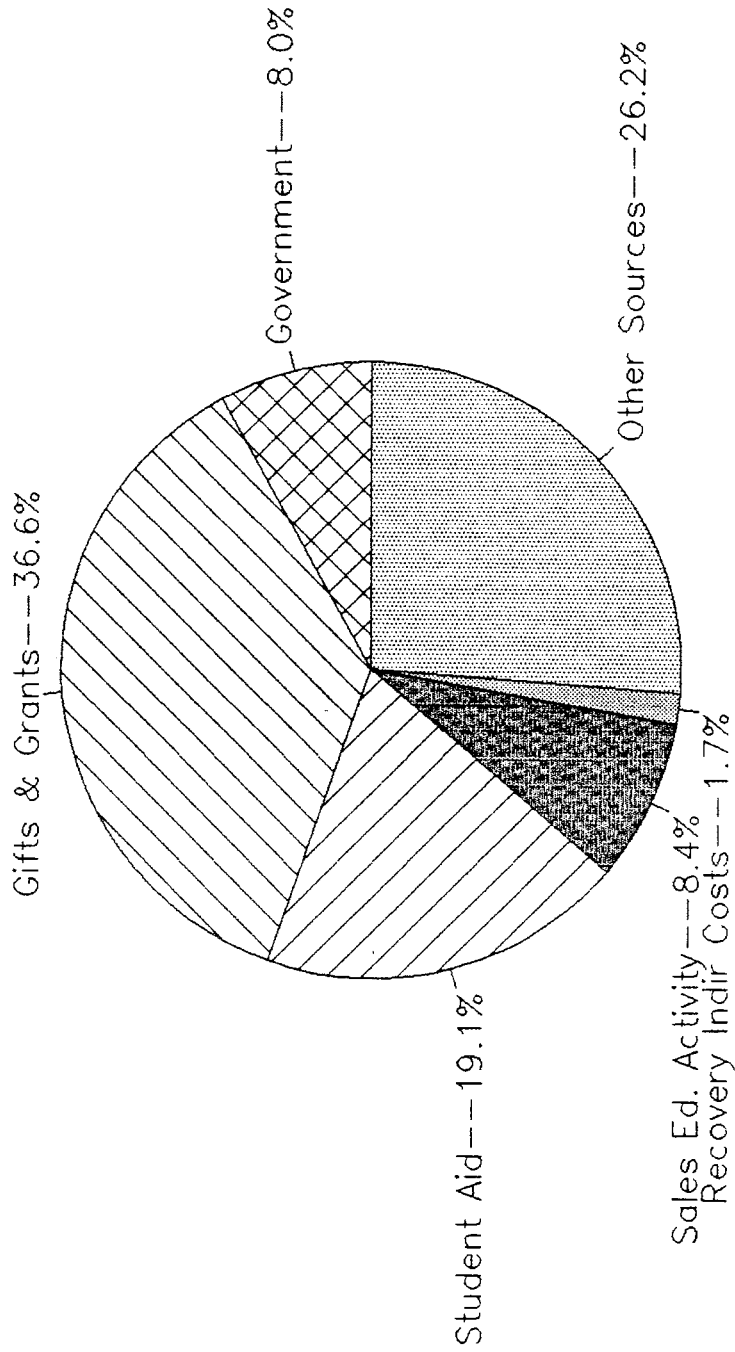
NYACK COLLEGE
TOTAL CURRENT FUND REVENUE
1986-87 Percentages



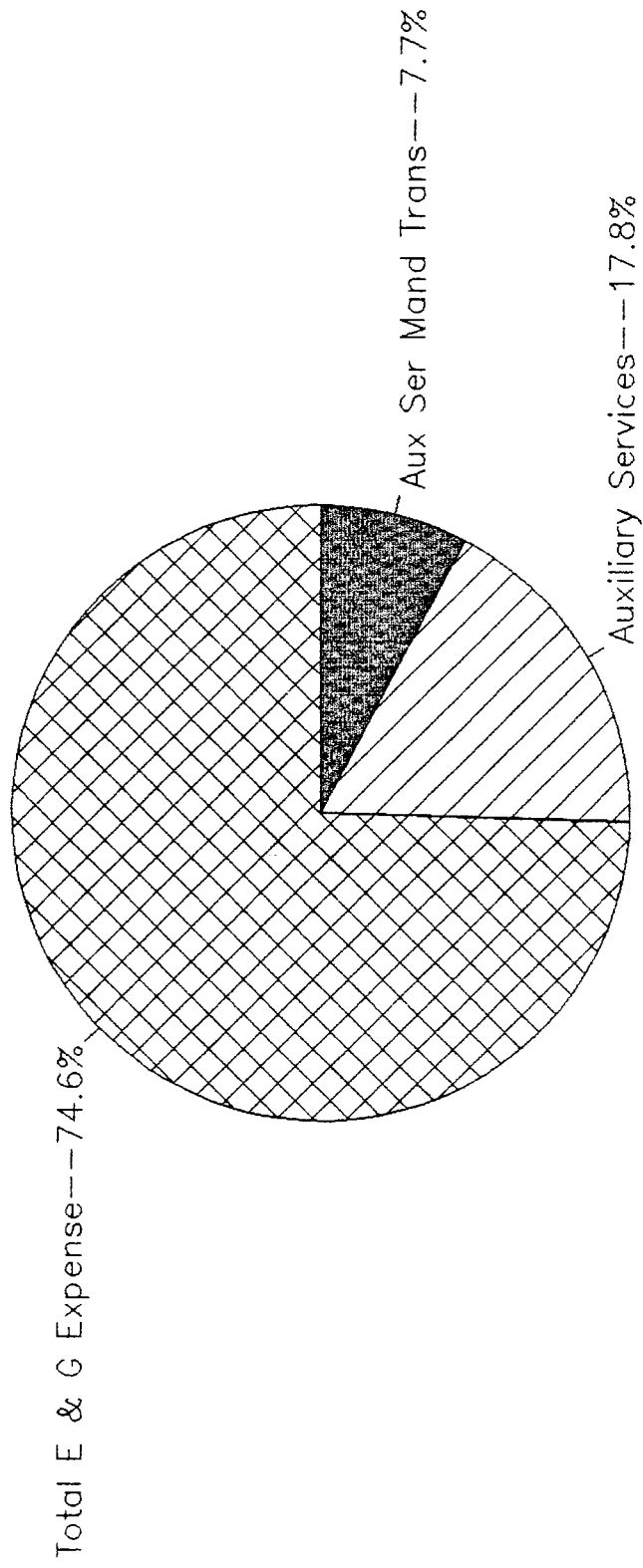
NYACK COLLEGE OTHER SOURCES OF INCOME 1985-86 PERCENTAGES



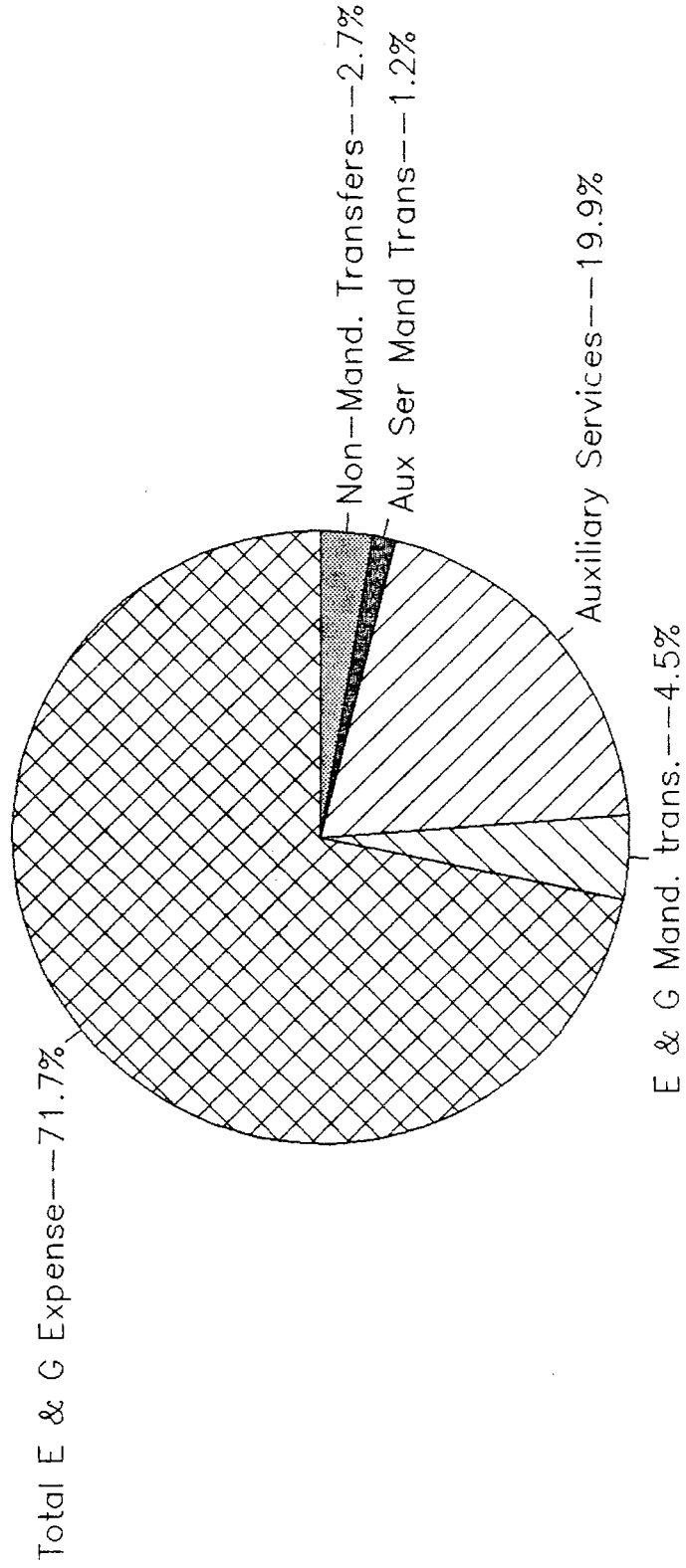
**NYACK COLLEGE
OTHER SOURCES OF INCOME
1986-87 PERCENTAGES**



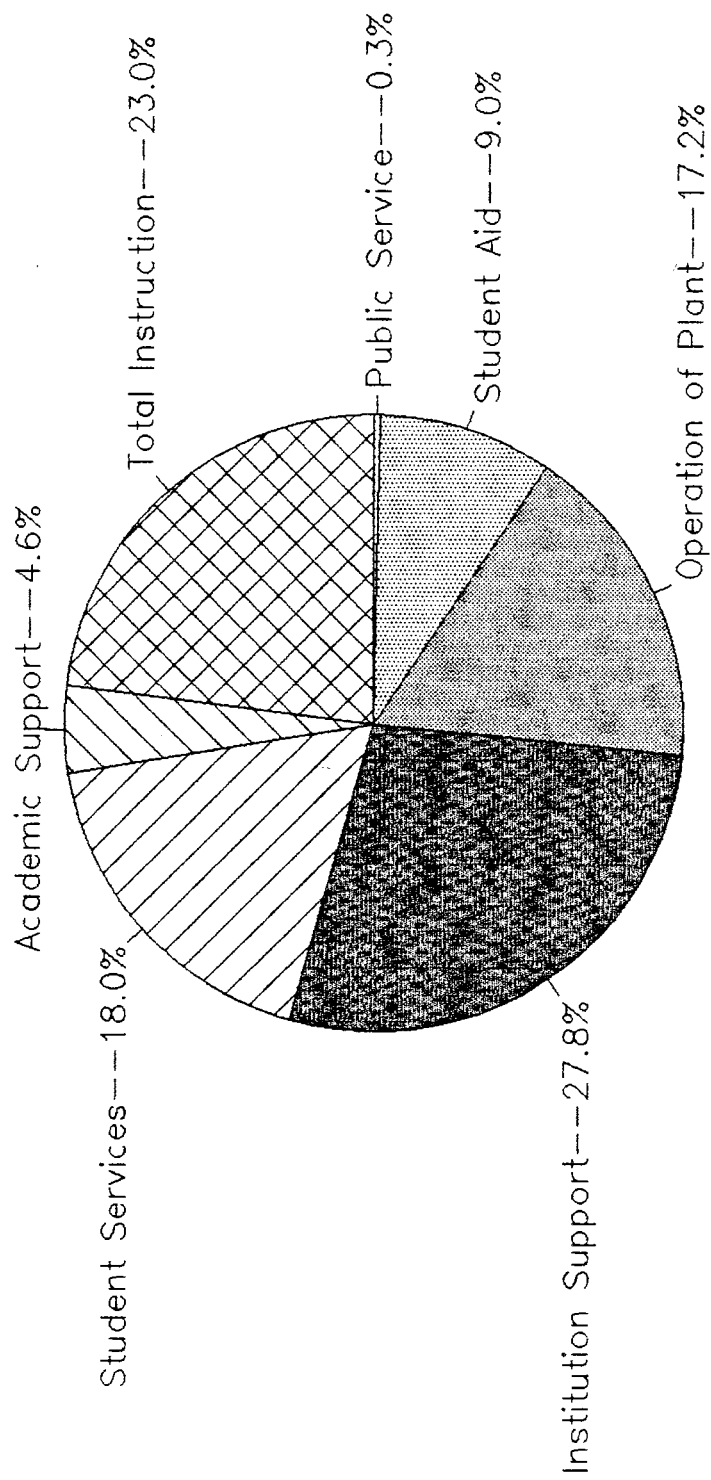
NYACK COLLEGE
TOTAL EXPENSES AND TRANSFERS
1985-86 PERCENTAGES



NYACK COLLEGE
TOTAL EXPENSES AND TRANSFERS
1986-87 PERCENTAGES

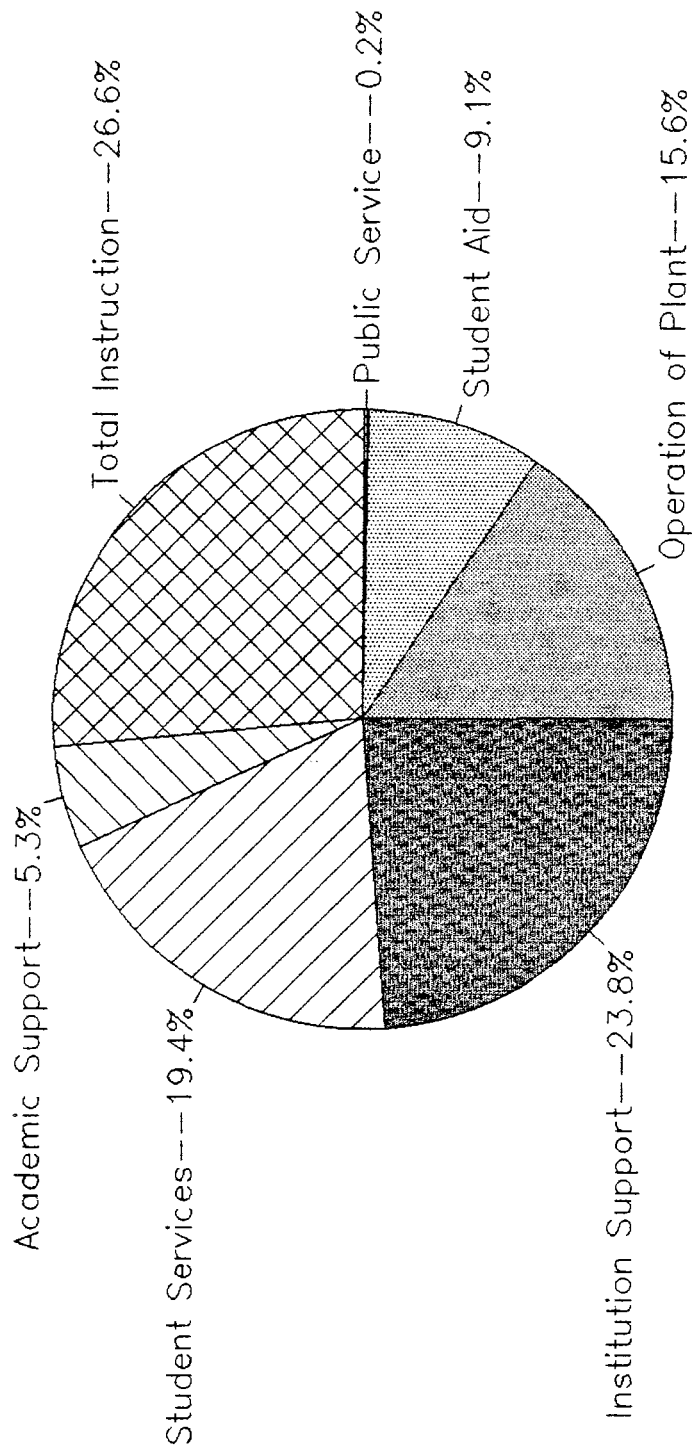


NYACK COLLEGE EDUCATION AND GENERAL EXPENSE 1985-86



NYACK COLLEGE EDUCATION AND GENERAL EXPENSE

1986-87



STUDENT AID

	85 - 86		86 - 87		87 - 88	
	# Awards	Dollars	# Awards	Dollars	# Awards	Dollars
LOANS						
GSL	*	*	*	*	296	\$706,222
Perkins	126	\$85,688	143	\$106,225	164	\$127,232
PLUS					15	\$40,580
EMPLOYMENT						
CWS	79	\$43,941	81	\$48,276	103	\$50,000
Time Card	*	*	*	*	81	\$80,702
GRANTS						
Tuition Remission	*	*	20	\$33,130	22	\$101,625
Pell	213	\$319,917	221	\$246,167	186	\$278,993
SEOG	78	\$21,691	56	\$25,805	77	\$28,526
TAP	155	\$333,139	176	\$377,283	174	\$372,876
Scholarships	17	\$11,900	7	\$8,450	51	\$34,962
Institutional			198	\$98,115	459	\$198,091
TOTAL	668	\$816,276	902	\$943,451	1628	\$2,019,809

* Data not available

Source: Financial Aid Office
IR/ah
8/88

ADDITIONAL DATA LIST

DATA INVENTORY
SORTED BY OFFICE

NAME OF DATA	LOCATION
=====	
Academic Probation	Academic
Admit Term	Academic
Advisor	Academic
Alumni Parents	Academic
Citizenship	Academic
County Code	Academic
Course List By Enrollment Count	Academic
Credit Hours Attempted	Academic
Cumulative Hours Attempted	Academic
Cumulative Hours Earned	Academic
Date of Birth	Academic
Degrees Conferred	Academic
Denomination	Academic
Discontinuations	Academic
Enrollment: By Age Cohort and Sex	Academic
Enrollment: By Course and Degree	Academic
Enrollment: By Denominational Affiliation	Academic
Enrollment: By State and Country	Academic
Enrollment: Impaired Students	Academic
Enrollment: In Occupationally Specific Programs	Academic
Enrollment: Opportunity Students	Academic
Enrollment: Part-time	Academic
Enrollment: Summary	Academic
Enrollment: Transfer Students	Academic
Ethnic	Academic
Faculty Load Analysis	Academic
Graduation Term	Academic
High School GPA	Academic
Local Address	Academic
Maiden Name	Academic
Major Declared	Academic
Major Intended	Academic
Marital Status	Academic
Next of Kin: Relationship & Address	Academic
Permanent Address	Academic
Rank & Number in High School Class	Academic
Residence and Migration of College Students	Academic
Retention: Fall Enrollment Cohort Survival	Academic
SAT Math & Verbal Score	Academic
Social Security Number	Academic
Student Admit Status	Academic
Student/Faculty Ratio	Academic
Transfer Credits	Academic
UAP Area Test Scores	Academic
Veteran	Academic
Vocational and Educational Preference	Academic
Vocational Interest	Academic
Applicants' SAT, ACT, Class Rank, & GPA	Admissions

Alumni Addresses	Advancement
Biographical Info on Fac/Admin/Staff	Advancement
Donor Source and Fund Summaries	Advancement
Foundations and Corporations Directories	Advancement
Gift Income for Specific Funds	Advancement
List C&MA Pastors in 12 Districts w/ Birthdays	Advancement
List of Current Missionaries	Advancement
List Of C&MA Churches In Our 12 Districts	Advancement
List of C&MA Pastors	Advancement
List of NonC&MA Churches and Pastors	Advancement
Personal Data and Gift Records	Advancement
Public Relations Info On Sach Student	Advancement
Tour Group Schedules	Advancement
Number Of Students Enrolled In Intramurals	Athletic
Students Enrolled In Athletics	Athletic
Fire Extinguisher Reports	B & G
Fire Inspection Reports	B & G
Sprinkler Inspection Reports	B & G
Work Order Reports	B & G
Faculty List (rank, tenure, FT/PT, degree, etc)	Business
Staff List (classification, FT/PT, etc)	Business
Career Office Placement Records	Career Office
Auto Registration of Fac/Staff/Students	Dean Students
Blood Drive: Number and Type Of Blood	Dean Students
Chapel Attendance Records	Dean Students
Commuter Lists	Dean Students
Married Students List and Organization	Dean Students
Number Of Class Absences Due to Illness	Dean Students
Residence Halls: Capacity	Dean Students
Residence Halls: Male/Female	Dean Students
Student Campus Phone Directory	Dean Students
Student Directory	Dean Students
Student Organization Lists	Dean Students
Student Satisfaction Survey	Dean Students
Students Living In Residence Halls But Off Board	Dean Students
Traffic Fine, Parking Regulations	Dean Students
Federal Funding Levels	Financial Aid
Grid of Income Levels of Financial aid applicants	Financial Aid
Income Levels Receiving Type of Financial Aid	Financial aid
Student Financial Aid	Financial Aid
Dramatic Affairs: Budgets and Receipts	FO 205
Dramatic Affairs: Performance Attendance Records	FO 205
Dramatic Affairs: Student Participation	FO 205
Annual Report on Department to NASM	Music Office
Placement of Graduates	Music Office

Admissions Profiles for 1st-time HEOP Students	Spec Programs
Distribution of HEOP Students by Race, Ethnic, Age & Sex	Spec Programs
Family Income of 1st-time HEOP Freshman	Spec Programs
HEOP Dependency-Residence Summary and Financial Aid	Spec Programs
HEOP Rosters	Spec Programs
Opportunity Program Retention Report	Spec Programs
Opportunity Program Separation Report	Spec Programs
Overall Summary of Grades for HEOP Students	Spec Programs
Placement of HEOP Graduates Expressed by Intention	Spec Programs
Summary of HEOP Remedial, Develop, & Supportive Courses	Spec Programs
Summary of Opportunity Program Student Attendance	Spec Programs
Annual Comparative Cost Per Student	Treasurer
Budget Summary	Treasurer
Cost Per Credit Hour: By Department	Treasurer